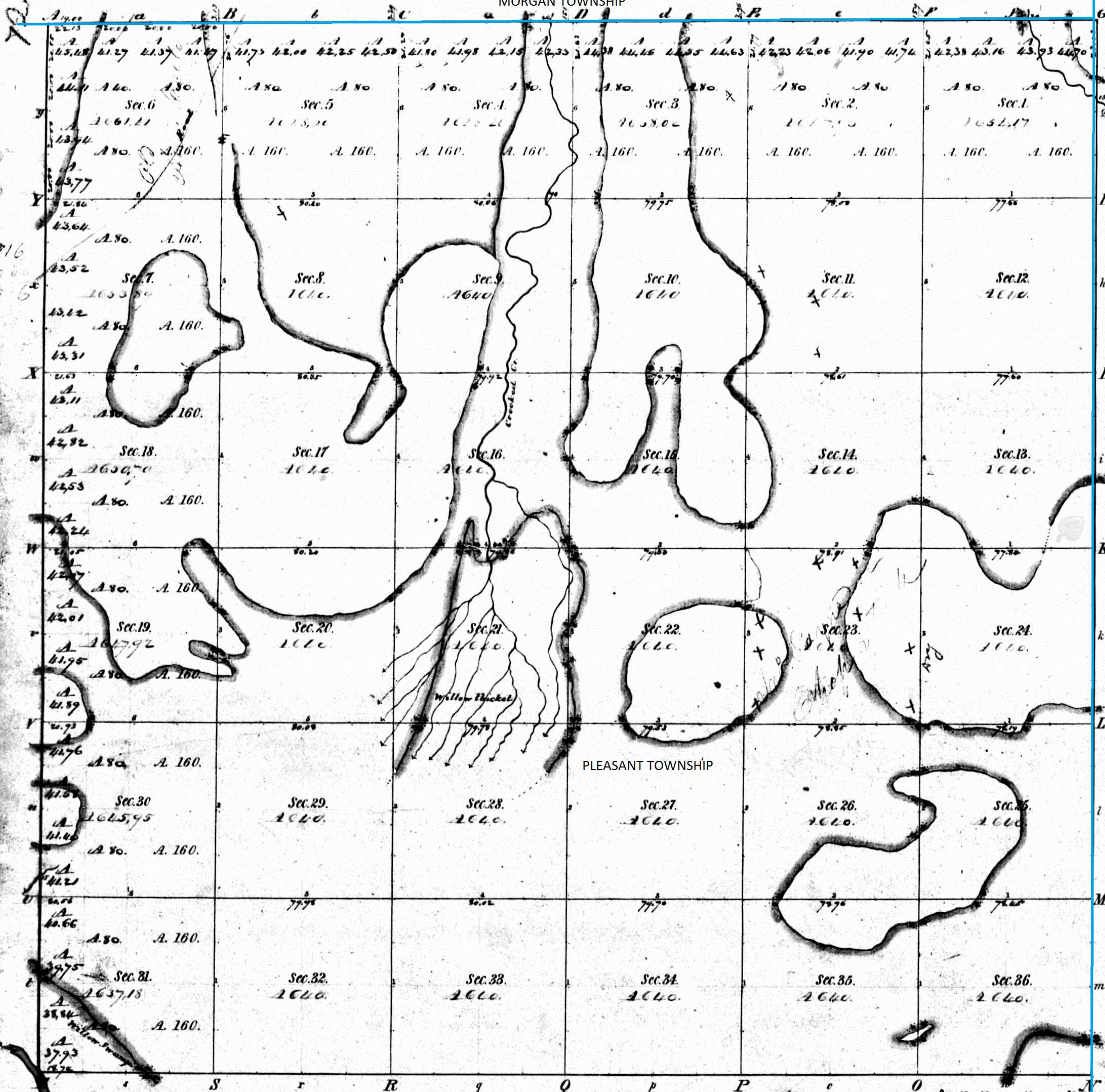


Township N^o XXIII, Range V^o W 2^o Mer. - Indiana-

MORGAN TOWNSHIP



Meanders of											
Posts	Courses	Ch ^o Lk ^o	Posts	Courses	Ch ^o Lk ^o	Posts	Courses	Ch ^o Lk ^o	Posts	Courses	Ch ^o Lk ^o

LAPORTE COUNTY

PLEASANT TOWNSHIP

INDIANA
N & W 2 P. M.

Schombr
96 B

Total number of Acres: 25,153.93

Surveys Designated	By Whom Surveyed	Date of Contract	Amount of Surveys	When Surveyed	When p ^d for and ch ^d in the Sur. ^r Gen. acc ^t
Township lines	Libbey & Clark	27 June 1833	M. Ch ^s Lks. 24 - 07 - 32	1 st of 1834	2 nd of 1834
Subdivisions	Jeremiah Smith	29 th March 1834	60 - 12 - 91	1 st of 1835	3 rd of 1835

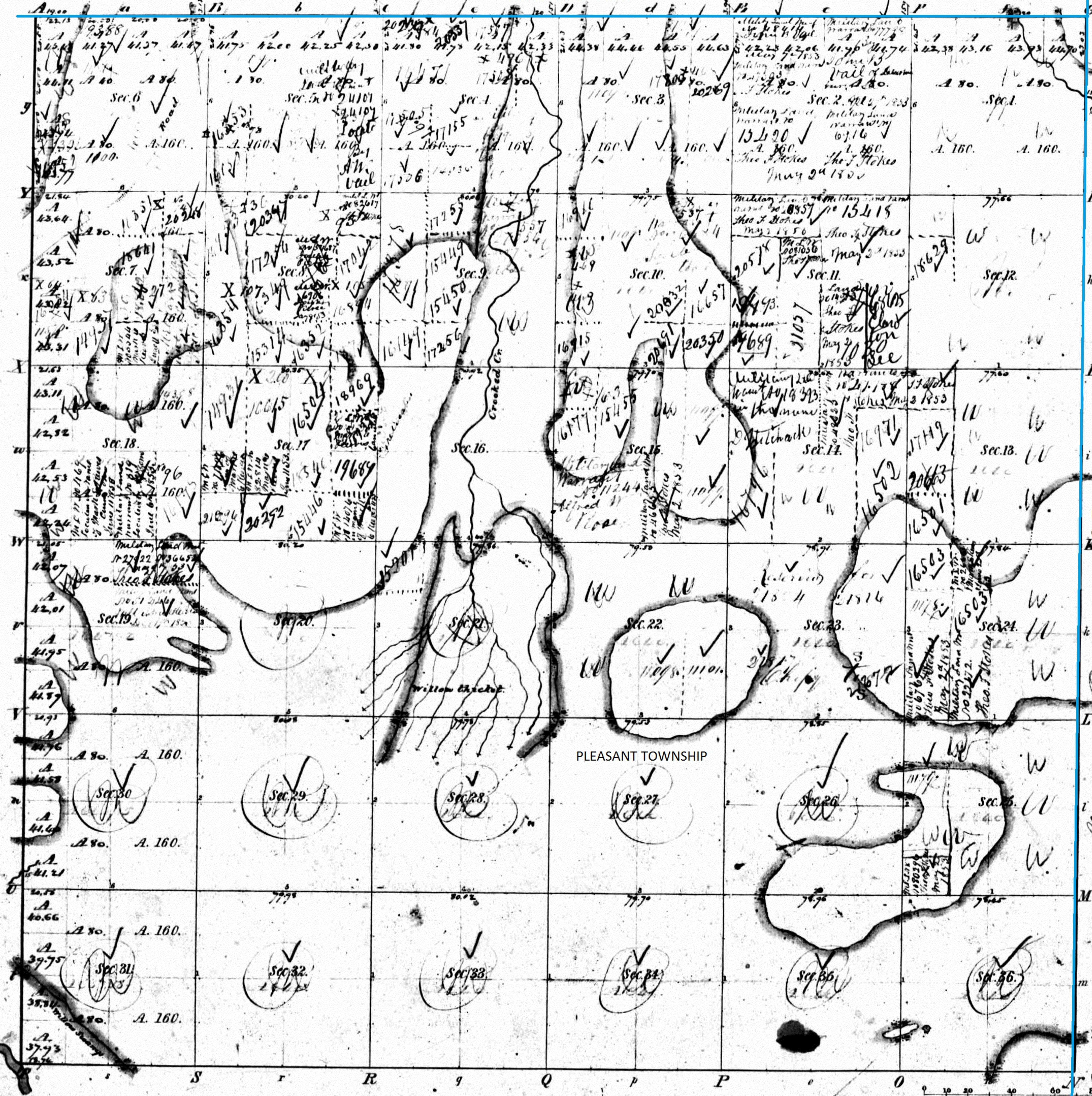
The above Map of Township N^o 33 North, of Range N^o 5 West of the 2nd Principal Meridian, Indiana, is strictly conformable to the field notes of the survey thereof on file in this Office, which have been examined and approved.
Surveyor General's Office, Cincinnati: April 26th 1836.

R^o J. Lytle
Sur. Gen.
by Sam^l Williams

By Booth the S.
IND

Township N. 10. 34. W. Range W. 5. 2. Mer.

MORGAN TOWNSHIP



Total number of Acres. 2,125.00

Surveys Designated	By Whom Surveyed	Date of Contract	Amount of Surveys	When Surveyed	When p ^d for and ch ^d in the Sur. Gen. acc ^t
Township lines	Hibley & Clark		M. Ch. Eks.		
Subdivisions	Jeremiah Smith, D.d.			1835	

The above Map of Township N. 10. 34. W. Range W. 5. 2. Mer. is strictly conformable to the field notes of the survey thereof on file in this Office, which have been examined and approved.

Surveyor General's Office, Cincinnati, April 26, 1836.

Wm. H. Lytle, Sur. Genl.

Meanders of											
Posts	Courses	Ch ^o Lk ^s	Posts	Courses	Ch ^o Lk ^s	Posts	Courses	Ch ^o Lk ^s	Posts	Courses	Ch ^o Lk ^s

State, Oct 30th September 1850 Su. M.
 Offered at Public Sale the 9th day of October 1857