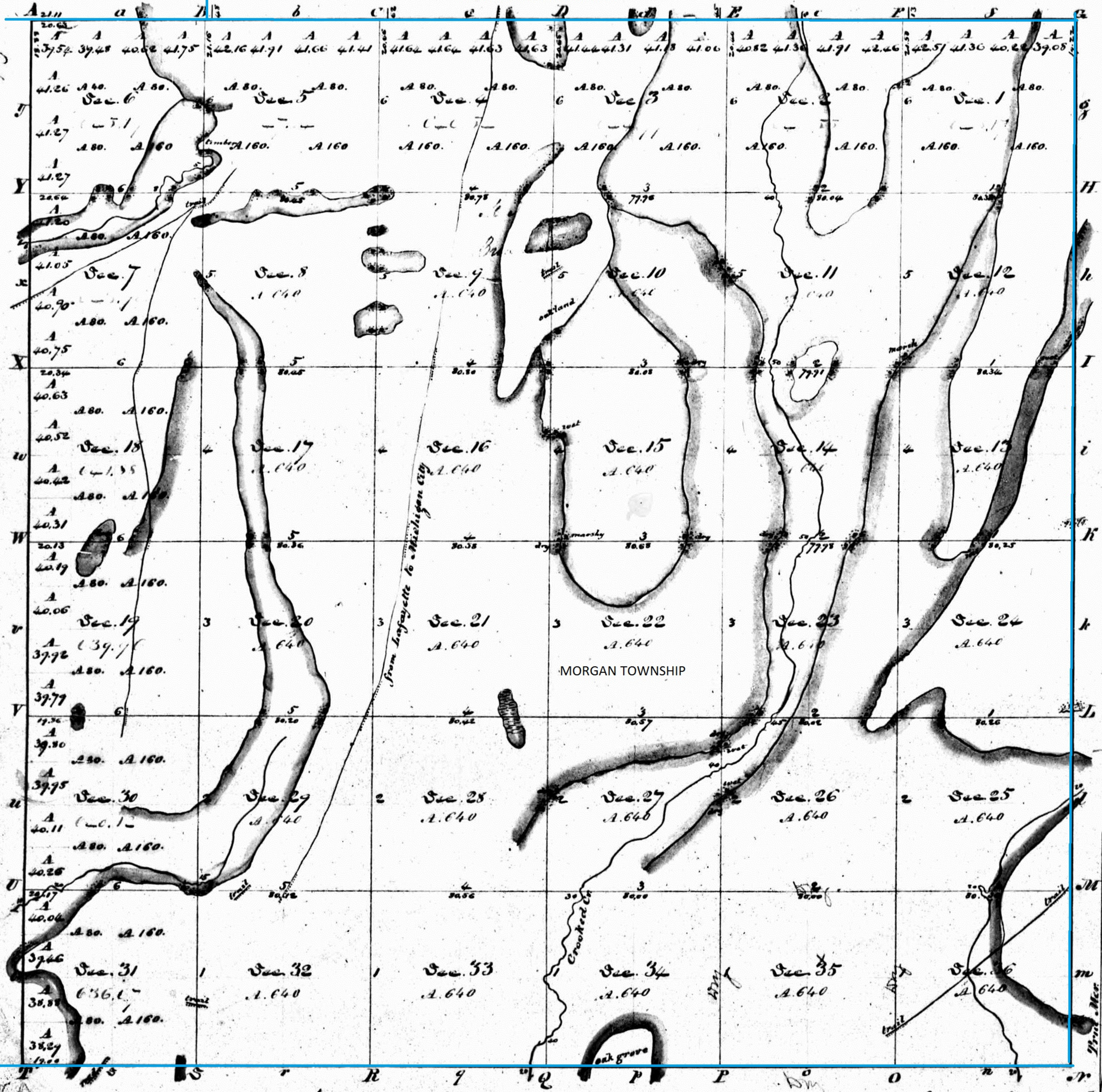


Township N. 34. Range W. 5. Mer.

WASHINGTON TOWNSHIP



LAPORTE COUNTY

MORGAN TOWNSHIP

PLEASANT TOWNSHIP

Annotated by Steven R. Shook, December 2013

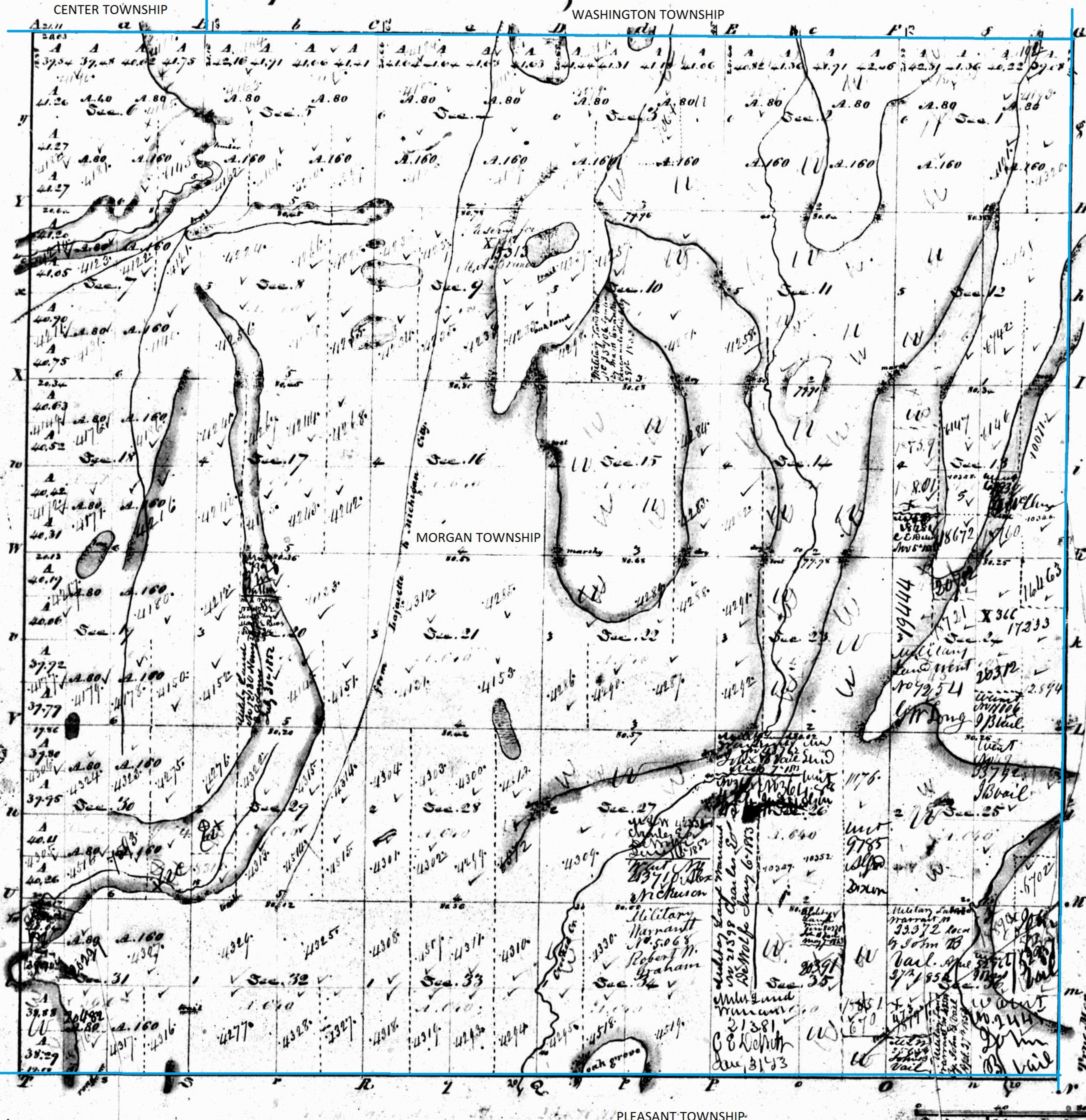
INDIANA.
N & W 2 P. M.

Survey Designated	By Whom Surveyed	Date of Contract	Acres of Survey	When Surveyed	When Filed
Subdivisions	Jeremiah Smith	27 th Mar. 1834	60.05.51	July 1834	39 th 35 th U.I.
Town Lines	R. Clark & Shibley				

The above Map of Township N. 34 North, Range N. 5 West 2nd Meridian (Indiana) is strictly conformable to the field notes of the survey thereof on file in this Office, which have been examined and approved.
 Surveyor General's Office
 Cincinnati Mar. 7. 1835
 M. T. Williams
 Sur. Gen.

IND

Township N. 34 North, Range N. 5 West 2nd Mer.



LAPORTE COUNTY

Office of Public Lands for 1st & 2nd Days of October 1855

Annotated by Steven R. Shook, December 2013

State Act 28th September 1851

Surveyed in 1834 by Jeremiah Smith D.S.

A copy from the original plot on file in this office.
Sur. Gen's Office Cinth. Mar. 12, 1835.

M. T. Williams
Sur. Gen.