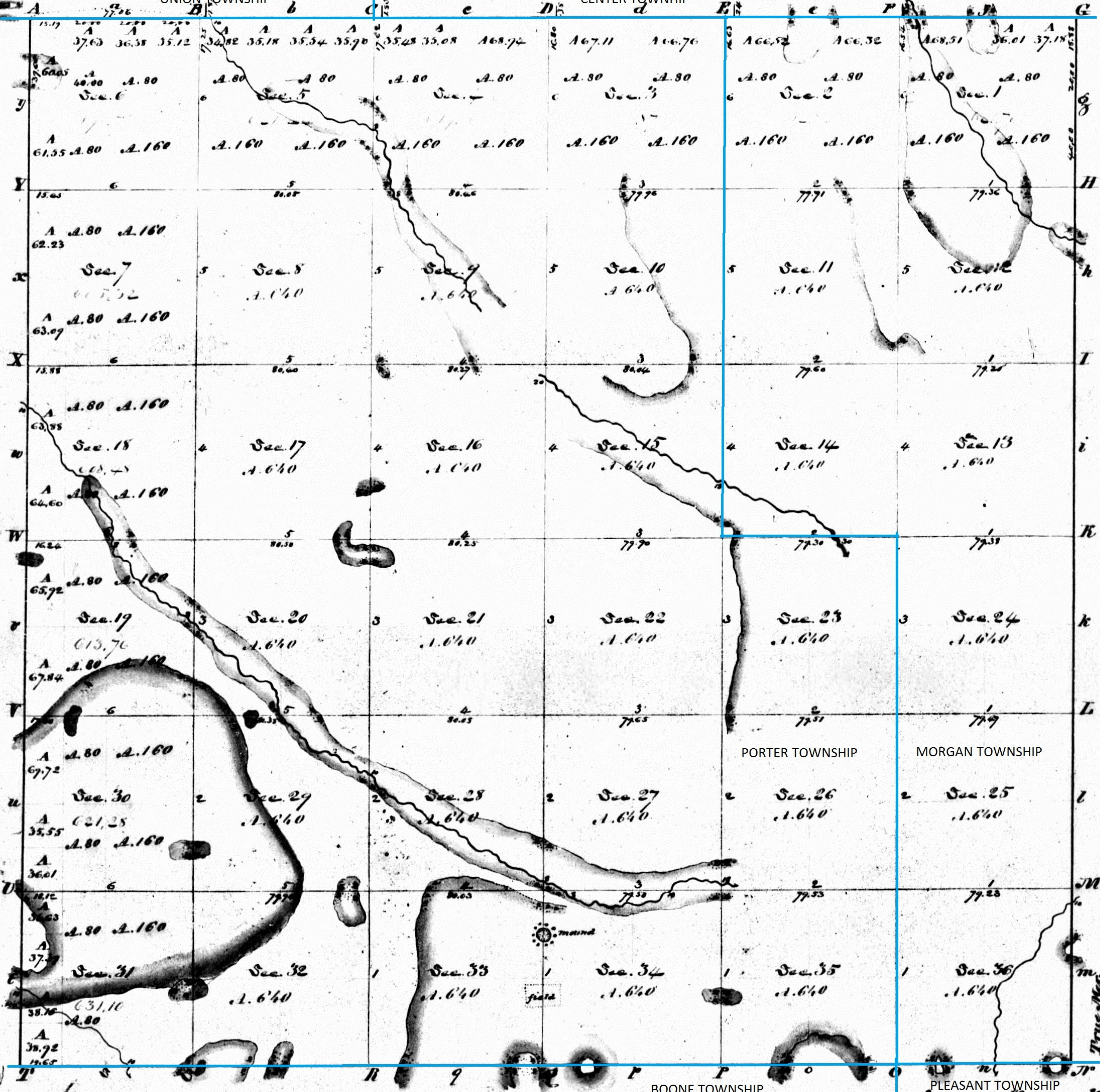


Township No. 34 North, Range No. 6 West 2nd Mer.

UNION TOWNSHIP

CENTER TOWNSHIP



INDIANA.
N & W 2 P. M.

Annotated by Steven R. Shook, December 2013

Survey Designated by whom surveyed	Date of Cont. set out	Ac. of survey	When surveyed	Sub. Cont. acc.
Subdivision	William Clark Apr. 20th 1834	59,47,79	July 7th 1836	1st. of 1835
Town lines	R. Clark & S. Sibley			

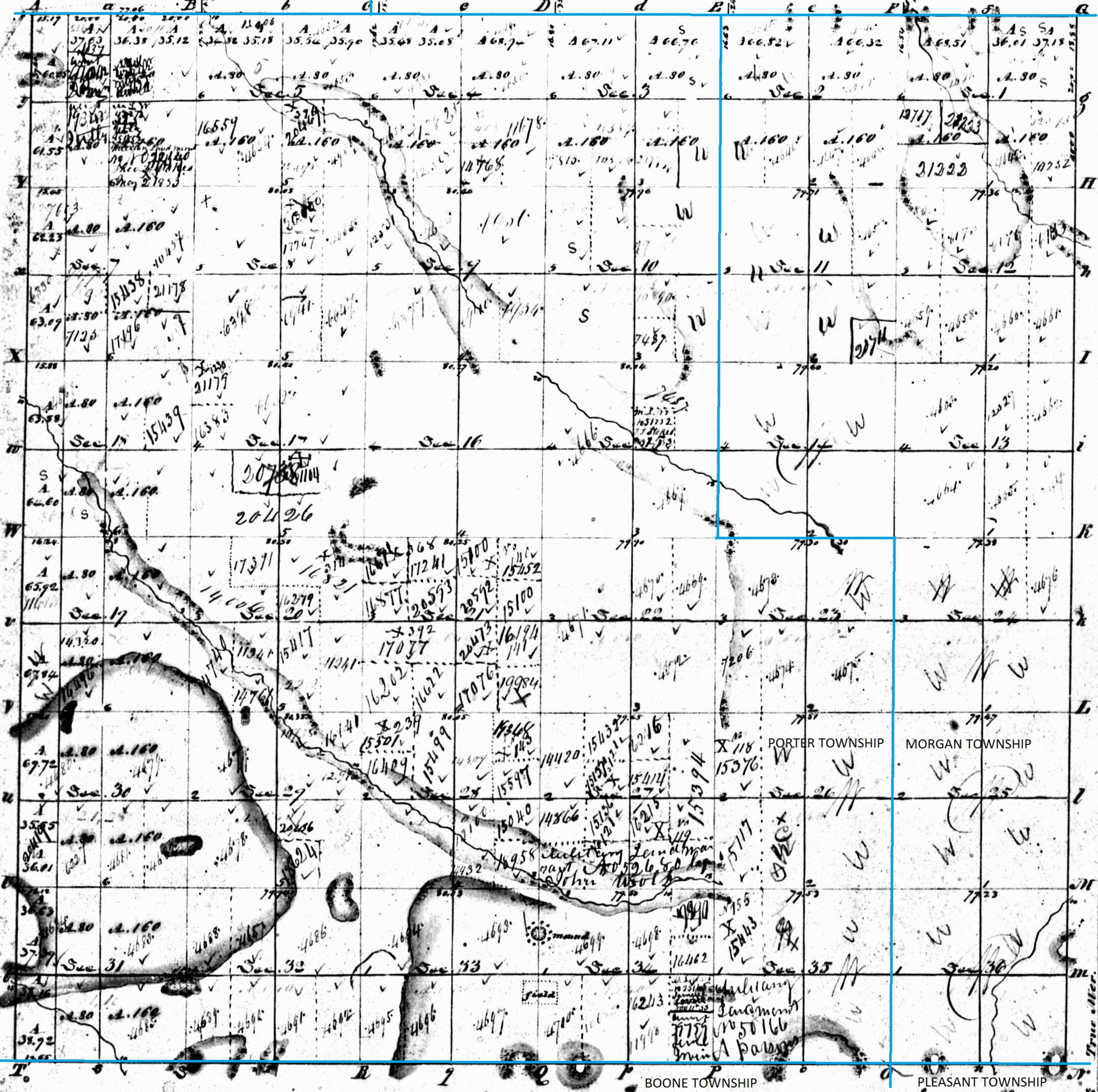
The above map of Township No. 34 N. Range No. 6 W. 2nd Meridian (Indiana) is strictly conformable to the field notes of the survey thereof on file in this office, which have been examined and approved.
 Surveyor General's Office
 Vincennes Nov. 7. 1855
 M. T. Williams
 Sur. Gen.

IND

Township 34 North, Range 6 West 2nd Mer.

UNION TOWNSHIP

CENTER TOWNSHIP



Opened at Public Sale the 30th day of October 1835 -

Annotated by Steven R. Shook, December 2013

State Act 28th Sept 1850 Sec 11

Surveyed in 1834 by William Clark D.S.

A copy from the original plot on
 file in this Office.
 Sur. Gen's Office M. T. Williams
 Gen. to Mar 10, 1835 Sur. Gen.

Scale 40 ch to an Inch.