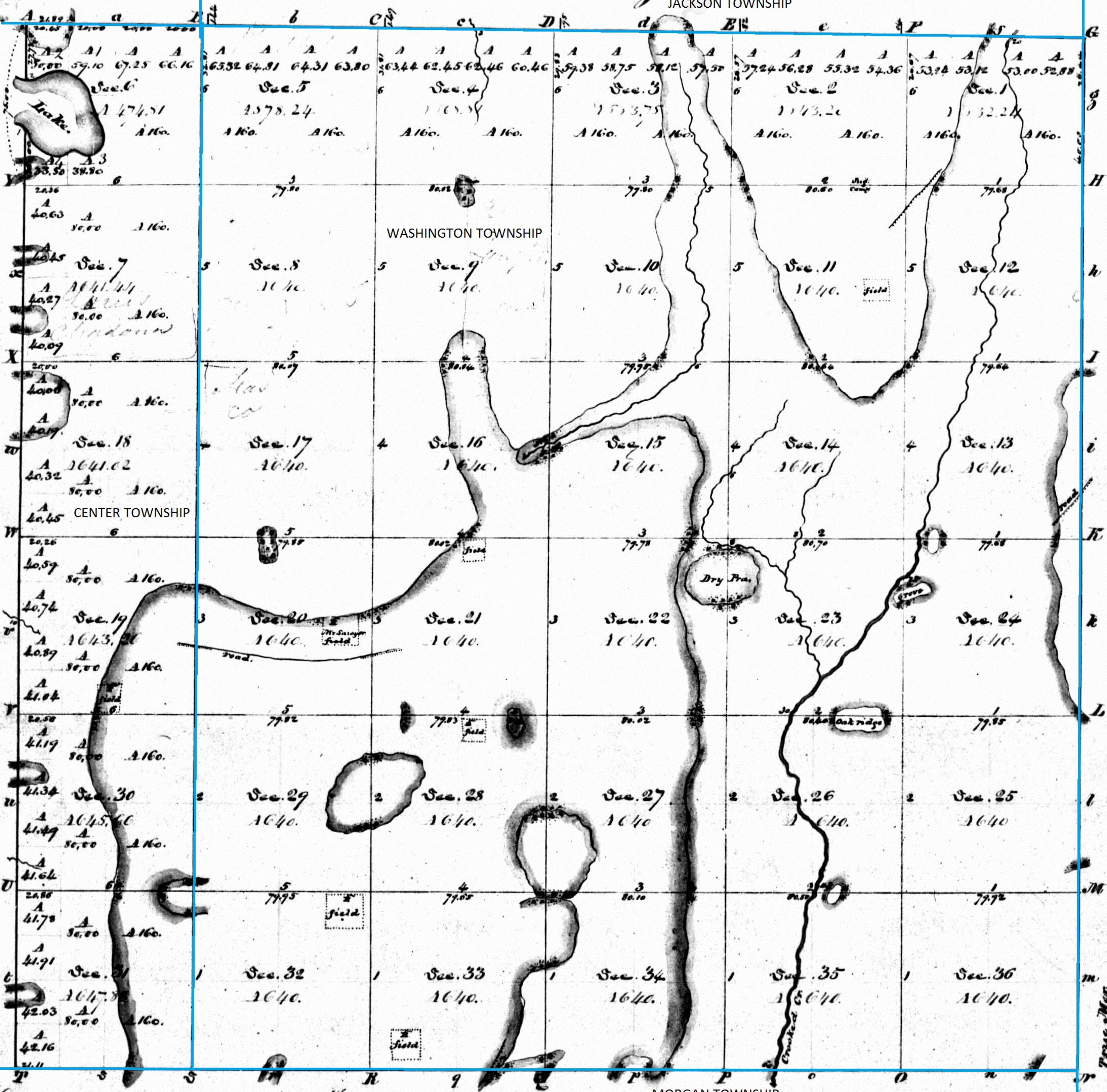


# Township N: 35 North, Range N: 5 West 2<sup>nd</sup> Mer.

LIBERTY TOWNSHIP

JACKSON TOWNSHIP



Meanders of Lake in Section 6		
Dist.	Course	Ch. & Fts.
1	S. 29.0	10.00
	S. 70.0	10.00
	S. 47.0	5.00
	S. 62.0	10.00
	N. 70.0	10.00
	N. 20.77	25.00
	N. 41.77	10.00
	N. 70.77	5.00
	S. 85.77	5.00
	S. 70.77	5.00
	S. 41.77	5.00
	S. 88.77	4.00
2	N. 74.77	1.92

LAPORTE COUNTY

IND

Annotated by Steven R. Shook, December 2013

INDIANA.  
N & W 2 P. M.

Changes Designated	By Whom	Surveyed	Date of Contact	Am't of Survey	Whence Surveyed	Date of Contact
Subdivisions	William Clark	21 <sup>st</sup> Apr. 1834	60.62.60	From 23 <sup>rd</sup> 1834	1835	1835
Town Lines	W. Clark & S. Sibley					

The above Map of Township N: 35 N. Range N: 5 W. 2<sup>nd</sup> Meridian (Indiana) is strictly conformable to the field notes of the survey thereof on file in this Office, which have been examined and approved.  
Surveyor General's Office  
Cincinnati, Mar. 7. 1835.

M. T. Williams  
Sur. Genl.

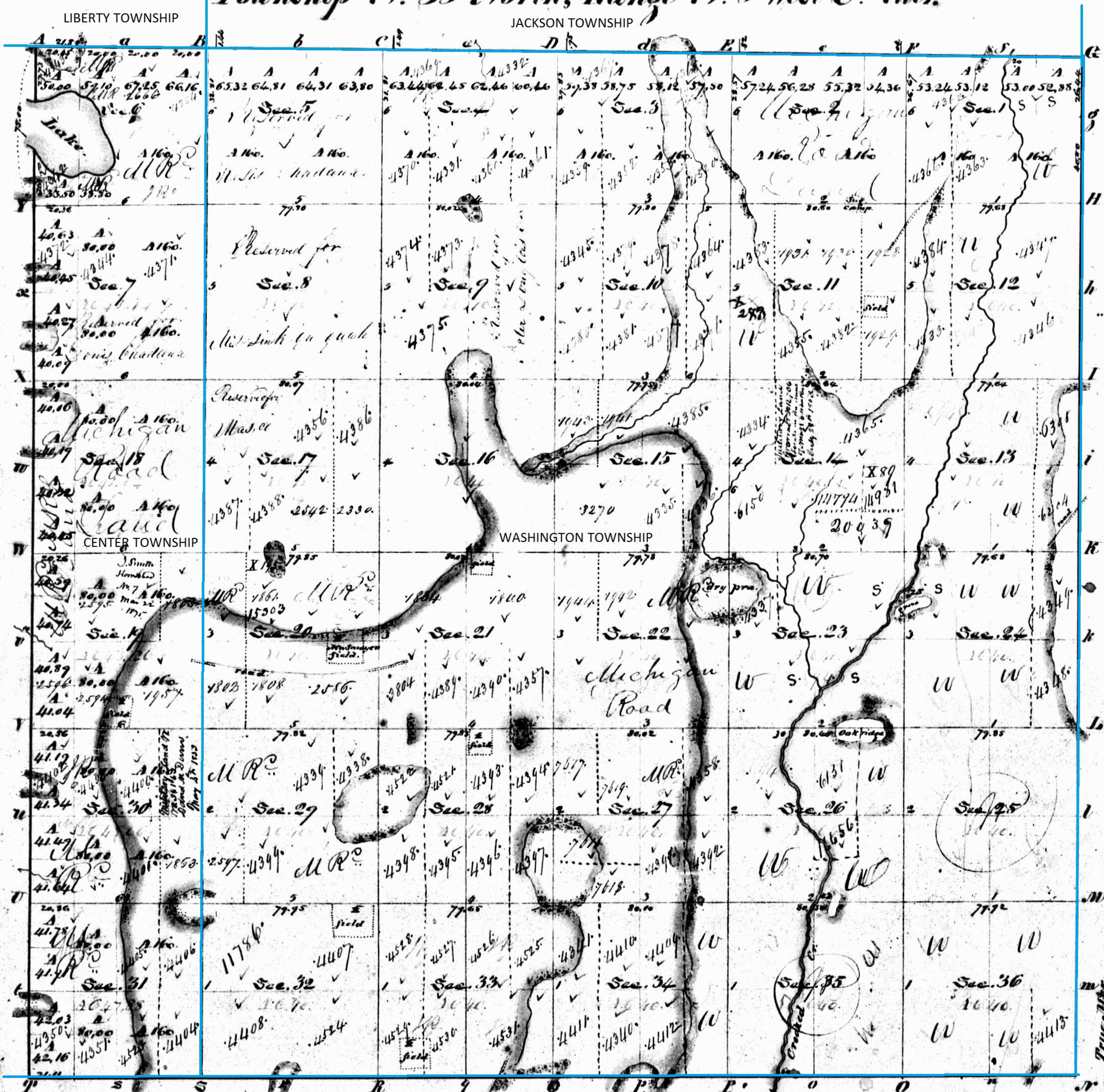
IND

Township 35 North, Range 5 West 2nd Mer.

LIBERTY TOWNSHIP

JACKSON TOWNSHIP

LAPORTE COUNTY



Officially published date the 2nd day of October 1836

Annotated by Steven R. Shook, December 2013

State, Oct 28th September 1850

MORGAN TOWNSHIP

Scale 40 Ch. to an Inch.

Surveyed in 1834 by William Clark D.S.

A copy from the original plat on file in this Office.

Sur. Gen's Office  
 Cin. Mar 10 1835  
 M. T. Williams  
 Sur Gen.