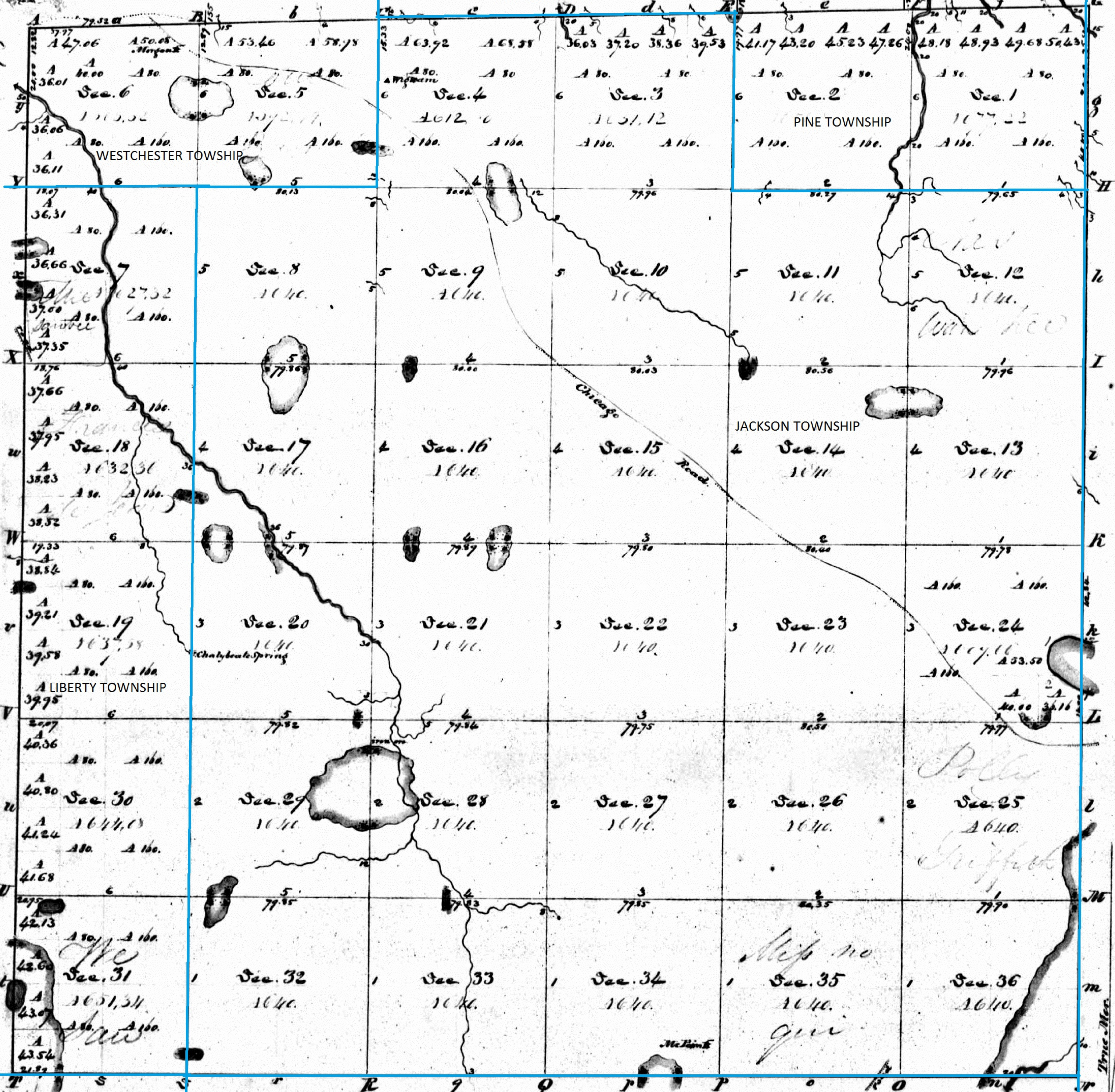


Township N: 36 North, Range N: 5 West 2nd Mer.

PINE TOWNSHIP



Parts	Course	Ch. St.
1	N 78° W	6.00
	N. 52° W.	11.00
	N. 25° W.	5.00
	N. 16° E	5.00
	N. 55° E	4.00
	N. 28° E	5.00
	N. 62° E	2.00
	N. 89° E	5.00
2	S. 47° E	2.50

Annotated by Steven R. Shook, December 2013

LAPORTE COUNTY

**INDIANA.
N & W 2 P. M.**

Compared

Total number of Acres 22,897.50

Survey Designated by whom Surveyed	Date of Location	Acres of Survey	When Surveyed	When Surveyed	When Surveyed
Subdivisions	Williams & Clark 21 st Apr. 1834	59,35.57	June 12 th 1834	1st of 1835	
Town Lines	Black & Silbey				

The above map of Township N: 36 North, Range N: 5 West 2nd Meridian (Indiana) is strictly conformable to the field notes of the survey thereof on file in this Office, which have been examined and approved.

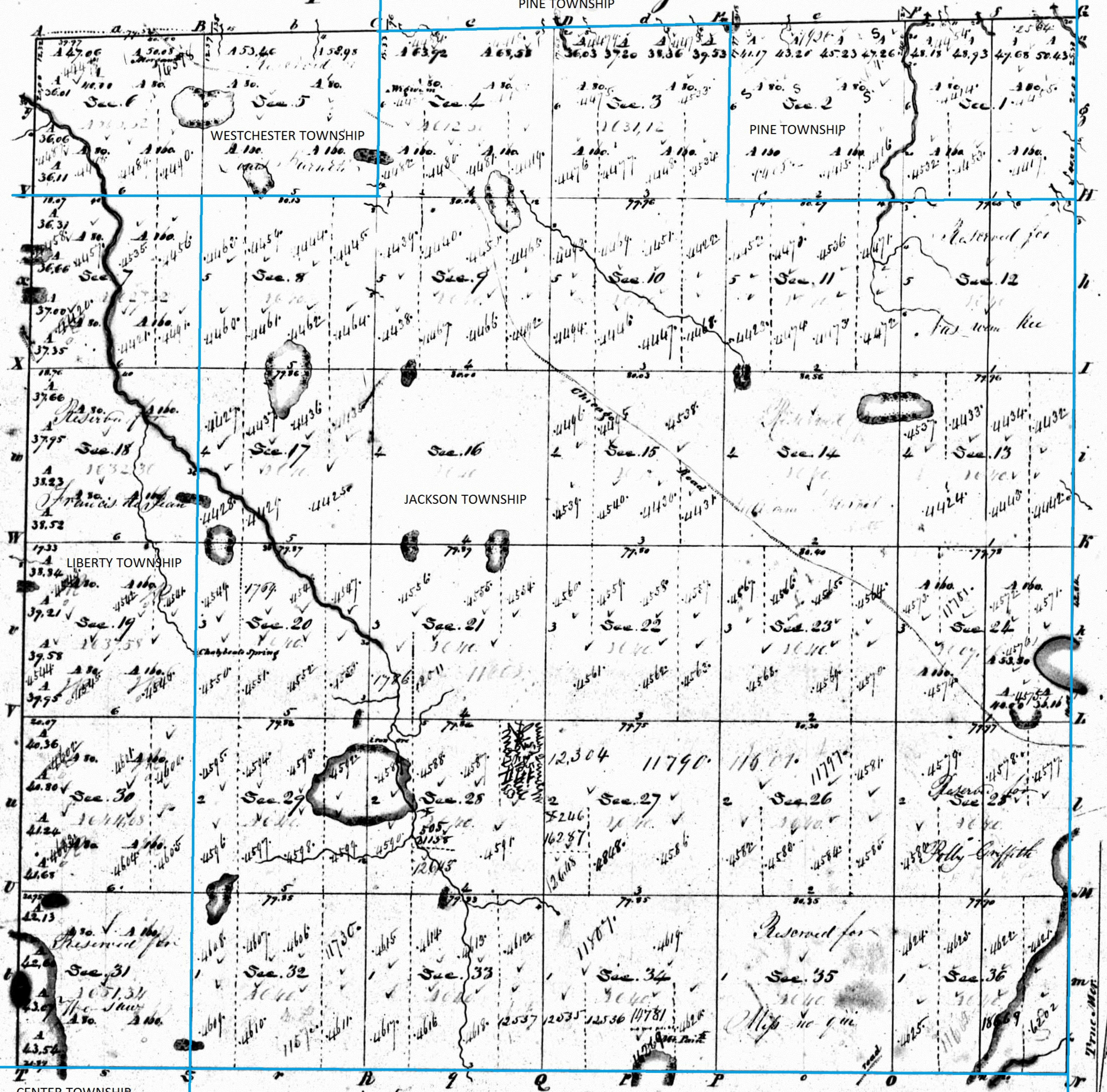
Surveyor General's Office
Cincinnati, Nov. 7. 1855.

M. T. Williams
Sur. Genl.

IND

Township No. 36 North, Range No. 5 West 2nd Mer.

PINE TOWNSHIP



Total number of Acres 22,897.80

Surveyed in 1834 by William Clark D.S.

A copy from the original plot
 on file in this Office.
 Cont. Mar. 10. 1835
 M. T. Williams
 Sur. Gen.

Offered at Public Sale the 2nd & 3rd Days of October 1835

Annotated by Steven R. Shook, December 2013

LAPORTE COUNTY