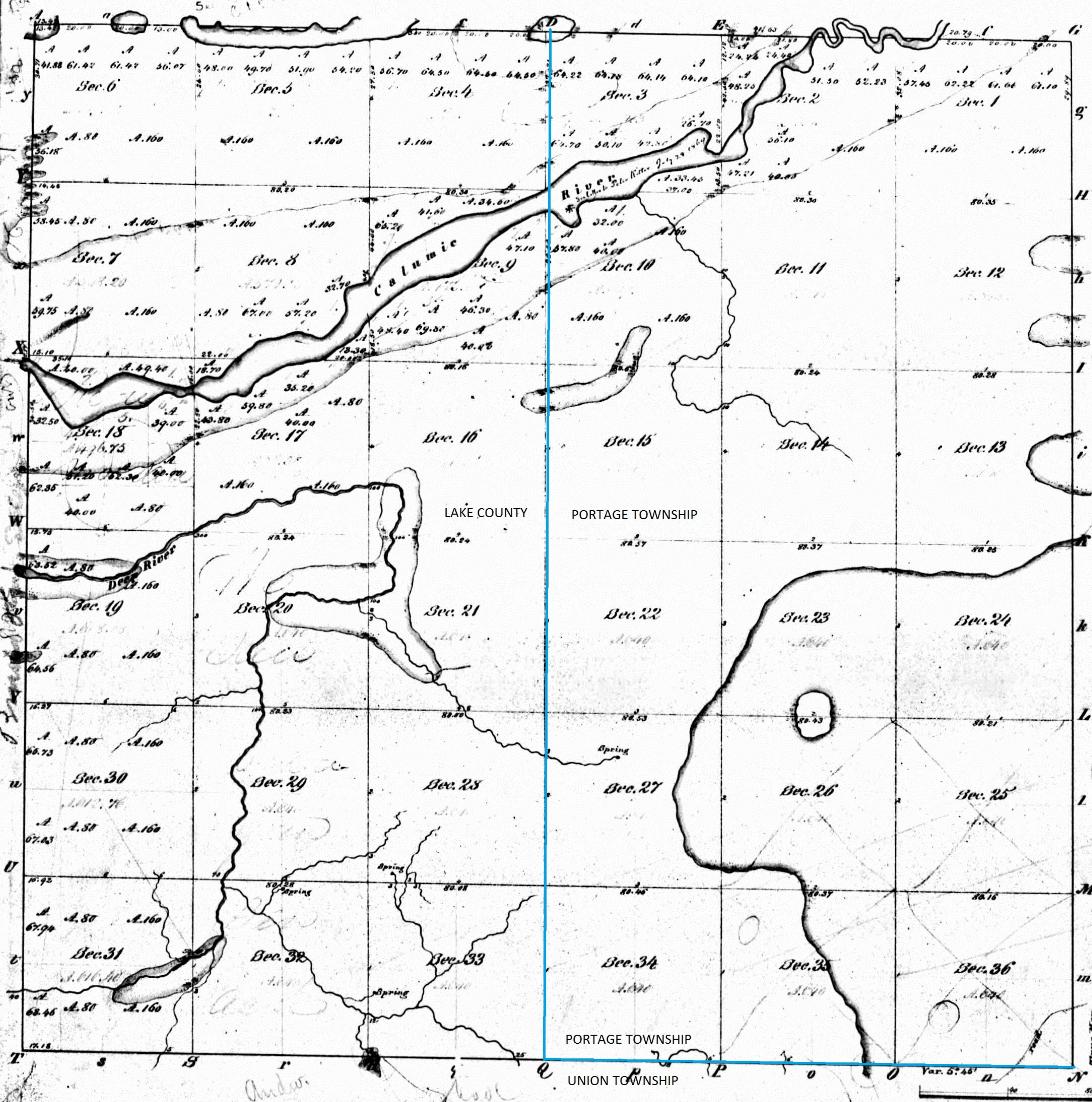


Township N. 36 N., Range N. 7 W. 2nd Mer.



INDIANA.
N & W 2 P. M.

Meanders of Calumic River.						
Dist	Course	Ch. & Ac.	Dist	Course	Ch. & Ac.	
Left Bank down			Right Bank.			
Sec. 1	South	3.50	5.	N 28 44 W	10.00	
	N 87 44 W	17.00		N 75 44 W	10.50	
	N 59 44 W	3.72		N 31 44 W	13.50	
	N 13 0	8.00		N 50 44 W	10.00	
	N 71 44 W	8.00		N 5 44 W	4.50	
	N 50 44 W	1.00		N 40 44 W	6.50	
	South	3.00		N 38 44 W	8.50	
	N 83 44 W	5.00		N 16 44 W	7.96	
	N 54 44 W	3.00	6.	N 70 44 W	5.00	
	N 35 44 W	4.50		N 17 0	9.50	
	North	3.50		N 48 44 W	6.00	
	N 70 44 W	2.50		N 53 44 W	12.00	
	N 21 44 W	5.00		N 61 44 W	12.50	
	N 61 44 W	5.50		N 78 44 W	22.50	
	N 21 44 W	4.00		N 87 44 W	14.00	
	N 10 0	3.50		N 46 44 W	9.00	
	N 2 44 W	5.00	Sec. 2	N 52 44 W	13.00	
	N 30 0	3.50		N 63 44 W	13.00	
	N 28 44 W	7.50		N 71 44 W	16.00	
	N 79 44 W	6.50		N 78 44 W	11.50	
	N 67 44 W	7.50		N 62 44 W	44.00	
	N 25 44 W	1.50		N 22 44 W	9.20	
	N 18 0	1.00	10.	N 78 44 W	8.50	
	N 27 0	8.50		South	12.00	
	N 37 44 W	5.00		N 41 44 W	18.50	
	N 77 44 W	13.50		N 58 44 W	7.00	
	N 8 44 W	6.00		N 76 44 W	7.50	
	N 39 44 W	8.50		N 75 44 W	18.00	
	N 13 0	9.50		N 8 44 W	4.00	
	N 30 44 W	4.50		N 65 44 W	8.56	
	N 84 44 W	16.42	13.	N 23 0	8.00	
	N 50 44 W	28.00		N 29 44 W	4.00	
	N 47 44 W	12.75		N 50 44 W	10.50	
	N 55 44 W	7.00		N 34 44 W	8.50	
	Wood	24.00		N 38 44 W	6.70	
	N 12 0	10.50	15.	Wood	8.00	
	N 75 44 W	5.00		N 75 44 W	20.00	
	N 67 44 W	12.12		N 60 44 W	16.00	
	N 66 44 W	25.00		Wood	5.00	
	N 30 44 W	9.00		N 64 44 W	12.50	
	N 48 44 W	13.00		N 82 44 W	15.00	
	N 76 44 W	13.50		N 57 44 W	9.90	
	N 35 44 W	10.00		Meanders of South part Long Lake N. boundary		
	N 60 44 W	25.43		18.	South	4.70
	N 35 44 W	11.50		Wood	17.10	
	N 45 44 W	8.50		19.	N 57 44 W	70.00
	N 69 44 W	7.79			N 89 44 W	10.50
	N 78 44 W	18.00		20.	N 50 44 W	10.00
	N 68 44 W	12.00		21.	N 33 44 W	7.70
	N 47 44 W	6.50				
	Wood	9.00				
	N 35 44 W	9.00				
	N 73 44 W	12.40				
	N 77 44 W	3.50				
	N 72 44 W	4.00				
	N 55 44 W	16.00				
	N 83 44 W	10.00				
	N 67 44 W	12.50				
	N 84 44 W	10.50				
	N 40 44 W	36.00				

Annotated by Steven R. Shook, December 2013

IND

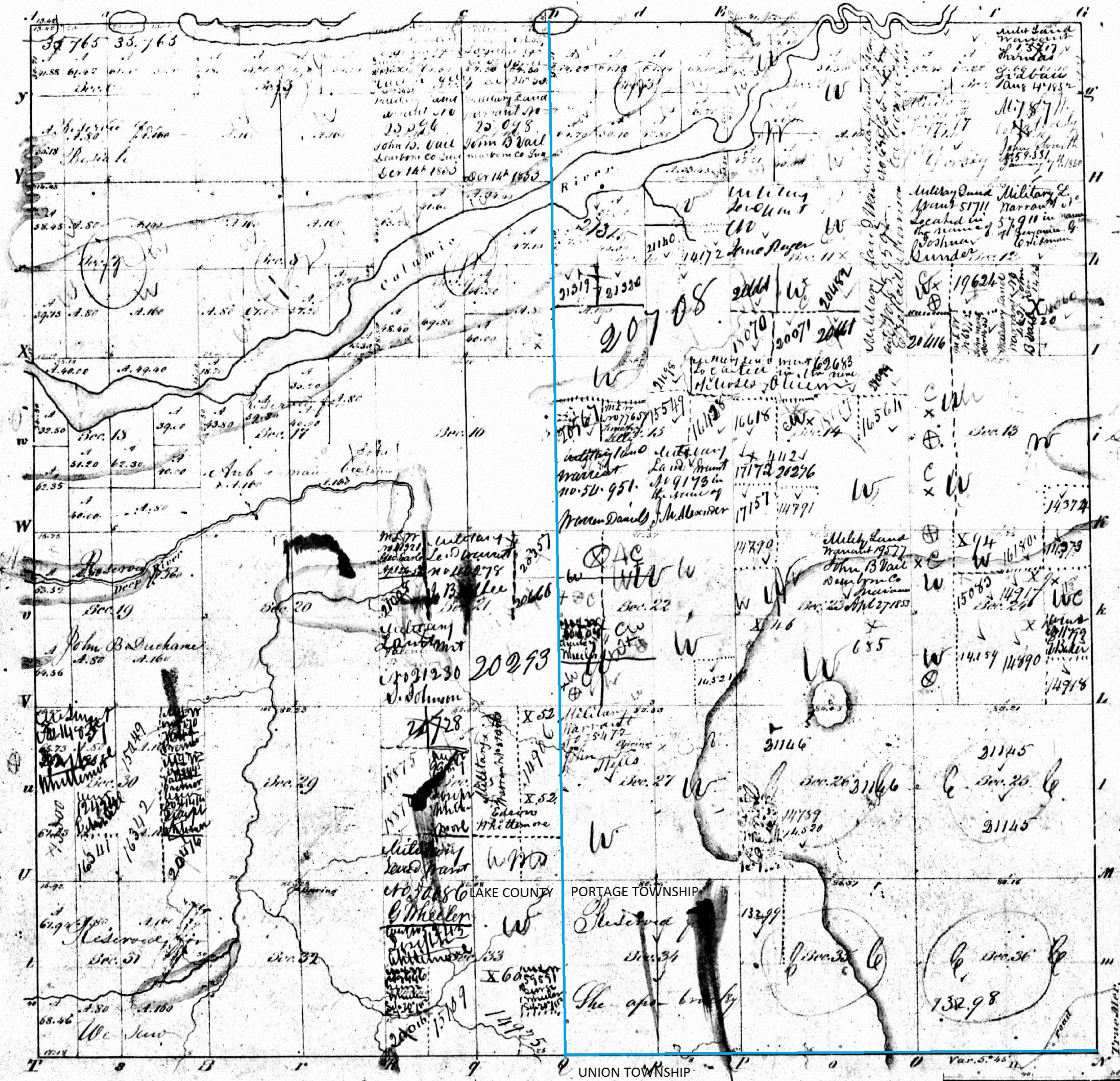
Surveys designated	By whom surveyed	Date of contract	Amount of survey	When surveyed	When paid for 8 ch. in the Sur. Gen. acct.
Township Lines	Libby & Clark	27 th June 1833	N. Ch. 23 - 31 - 20	1 st of 1834	2 nd of 1834
Subdivision	Andu. Burnside	21 st April 1834	59 - 06 - 40	4 th of 1834	1 st of 1836

The above Map, of Township N. 36 North, of Range N. 7 W. of the 2nd Principal Meridian, Indiana, is strictly conformable to the field notes of the Survey thereof on file in this Office, which have been examined & approved. Surveyor General's Office, Vincennes, Ind. 1836.

Robt. S. Lytle
Sur. Gen.

35

Township N^o 56. V; Range W^o 7 W. 2nd. Mer.



Spent at Public Sale the 2nd day
of March A.D. 1841.

X. Prumpter Capt. commanding

State Act 28th September 1850. see N.

Annotated by Steven R. Shook, December 2013

Surveyed in 1834 by Andrew Burnside, D.S.

The above Plot is truly copied from the Original
on file in this Office.

Surveyor General's Office, C. B. B. by the 15
Cincinnati April 26th 1836