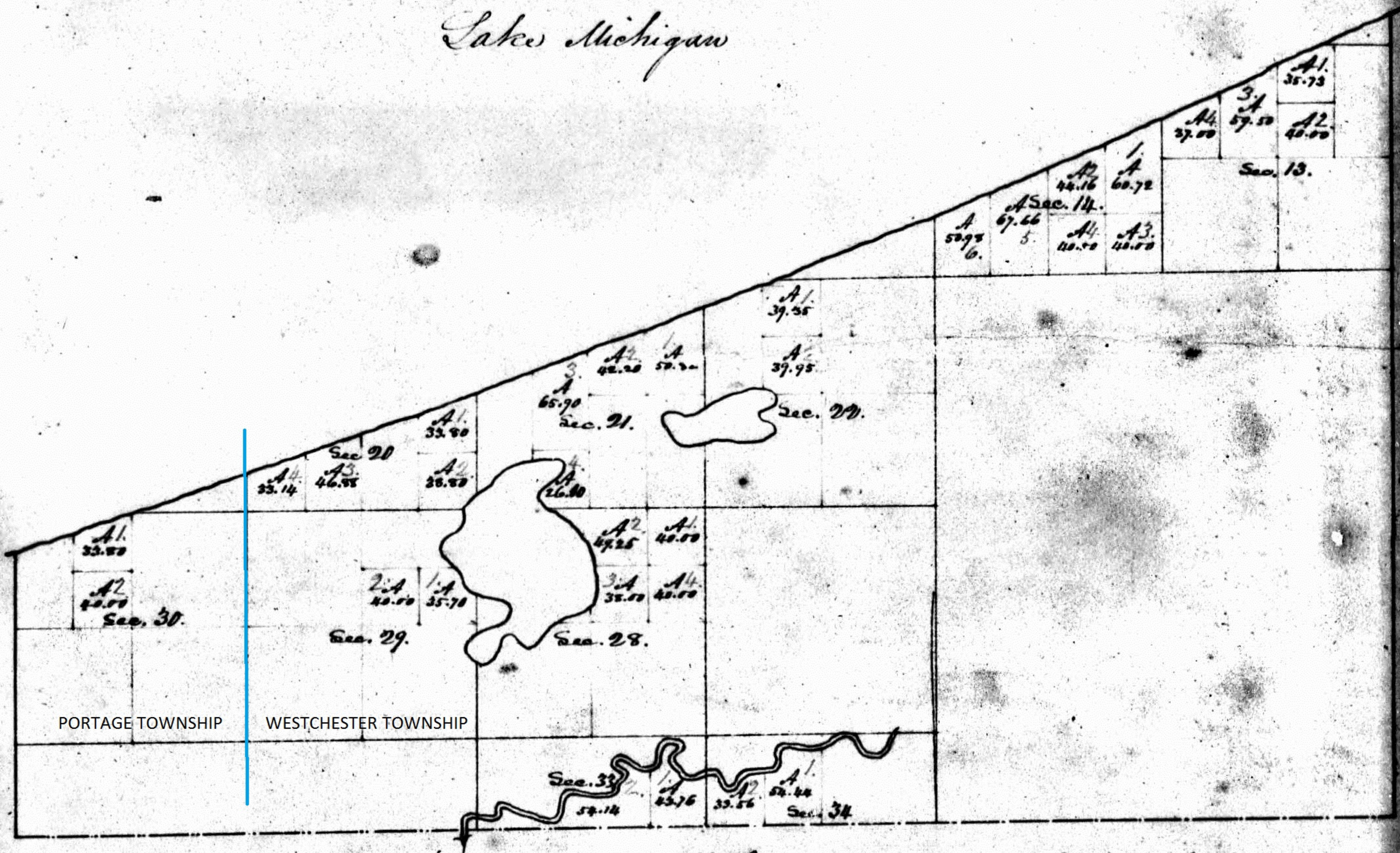


Township N. 37 N., Range N. 6 W. 2^d Mer.

Lake Michigan



PORTAGE TOWNSHIP

WESTCHESTER TOWNSHIP

The foregoing subdivisions of fractional sections are truly
copied from the original plat in this office.
Surveyor General's Office
Cincinnati, May 25, 1834
M. T. Williams
Sur. Genl.

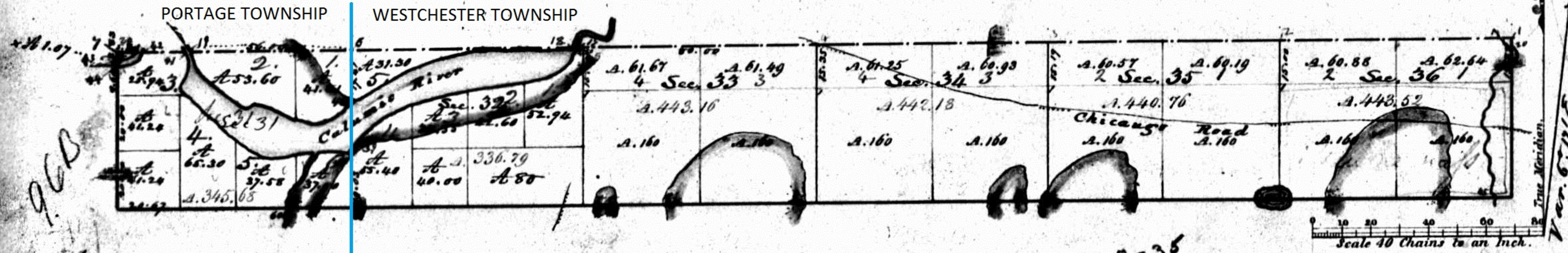
Rec June 2. 1834

contd Indiana Vol 5. 46

Township N^o XXXVII N, Range N^o VI W, 2nd Mer.

INDIANA.
N & W 2 P. M.

Meanders of Calumet River left bank					
Posts	Courses	Ch. ^s Lk ^s	Posts	Courses	Ch. ^s Lk ^s
17	S. 8 1/2 E	6.00			
	S. 63 N	7.10			
	S. 55 N	4.10			
	S. 52 N	22.00			
	S. 72 N	25.10			
	S. 55 N	10.00			
21	S. 41 N	7.25			
	S. 58 N	14.95			
	S. 50 N	10.00			
	S. 58 N	18.00			
	S. 40 N	15.00			
	S. 50 N	7.00			
	S. 19 E	5.00			
	S. 55 N	11.50			
	S. 27 N	6.00			
24	S. 77 N	11.00			
Right bank up					
43	S. 60 E	4.00			
20	S. 47 E	2.85			
19	S. 42 E	24.00			
	S. 52 E	4.00			
	S. 55 E	3.00			
	S. 68 E	12.00			
	S. 55 E	11.00			
	S. 65 E	16.00			
40	S. 59 E	2.81			
	S. 66 E	12.00			
	S. 57 E	10.00			
	S. 72 E	12.00			
	S. 55 E	16.50			
18	East	32.96			
Meanders of land of River in Sec. 31 in Old Survey.					
20	S. 45 E	6.00			
	S. 50 E	9.10			
19	S. 55 E	5.70			



Total number of Acres 2,452.00

Surveys Designated	By Whom Surveyed	Date of Contract	Amount of Surveys			When Surveyed	When p ^d for and ch ^d in the Sur. Gen ^l acc ^t
			M.	Ch ^s	Lk ^s		
Subdivision.	Andrew Rumside	21 st April 1834	6	21	24	4 th of 1834	14 th 36 th 8 th
Township lines of Boundary	W. C. Lank & S. Sibby						

The above Map of Township N^o 37 North, of Range N^o 6 W. of the 3rd Principal Meridian (Indiana) is strictly conformable to the field notes of the survey thereof on file in this Office, which have been examined and approved.

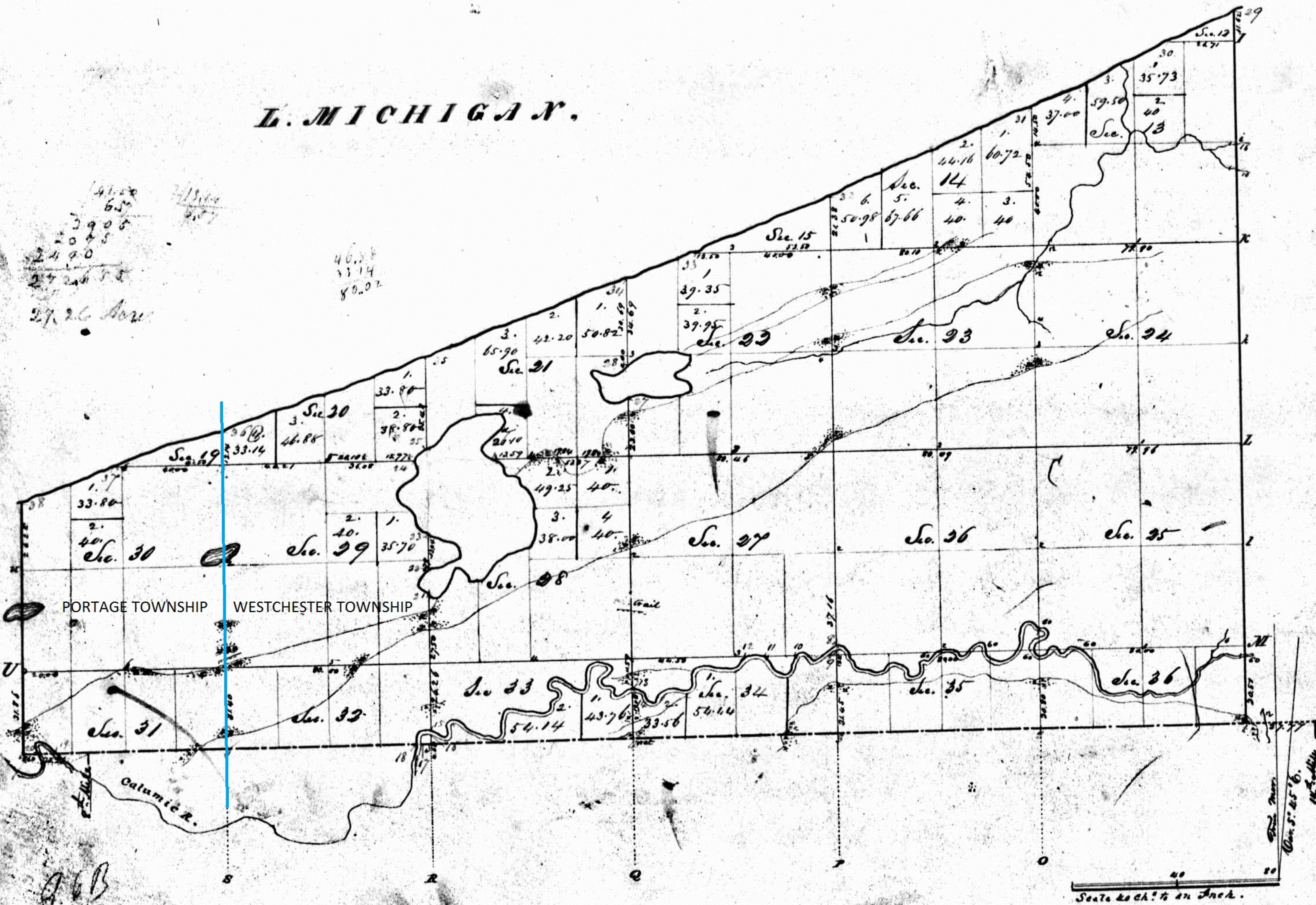
Surveyor General's Office,
Cincinnati, Nov. 7. 1855

M. T. Williams
S. Genl.

Township N^o XXXVII North, Range N^o VI West 2nd Mer.

INDIANA.
N & W 2 P. M.

L. MICHIGAN.



Contents		
Section	Acres	Acres
f. 12		15 21
EX NE 13		80
WX		75 78
NW		96 50
SE		329
E part EX 14		100 72
W		84 16
WX		118 14
f. 15		57 19
f. 19		57 20
EX SE 20		72 60
WX		60 78
WX		80 12
NE 21		73 00
E part WX		92 00
W part		63 40
EX SE		67 82
WX		80
EX 22		320
EX NW		79 30
WX		89 65
EX SW		77 00
WX		46 15
Sec. 23		640
24		640
25		640
26		640
27		320
EX SE		80
WX		79 80
SW		160
WX NE 28		89 28
SE		78
SE		160
EX SW		79 50
WX		61 94
W fac.		10 80
WX NE 29		63 20
SE		75 70
EX SE		76 40
WX		80
WX		320
EX 30		320
EX NW		75 80
WX		60
EX SW		80
WX		80
EX NE 31		62 91
WX		63 15
EX NW		63 36
WX		61 86
SE fac. 32		1 74
EX NE		60 70
WX		62 94
EX NW		62 90
WX		62 83
SE fac. 33		13 8 61
S fac.		97 90
N fac. 34		6 12
NW fac.		30 60
S fac. NE		112 65
S fac. NW		88 00
EX NE 35		61 76
WX		82 08
EX NW		62 40
WX		62 72
EX NE 36		61 10
WX		61 23
EX NW		61 40
WX		61 54
Total		8524 56

Annotated by Steven R. Shook, December 2013

Surveyed in April 1831 by Calvin Brittain C.S.

Registered July 1830 &
Entered in the Maps
J. A. H. H. H.

IND

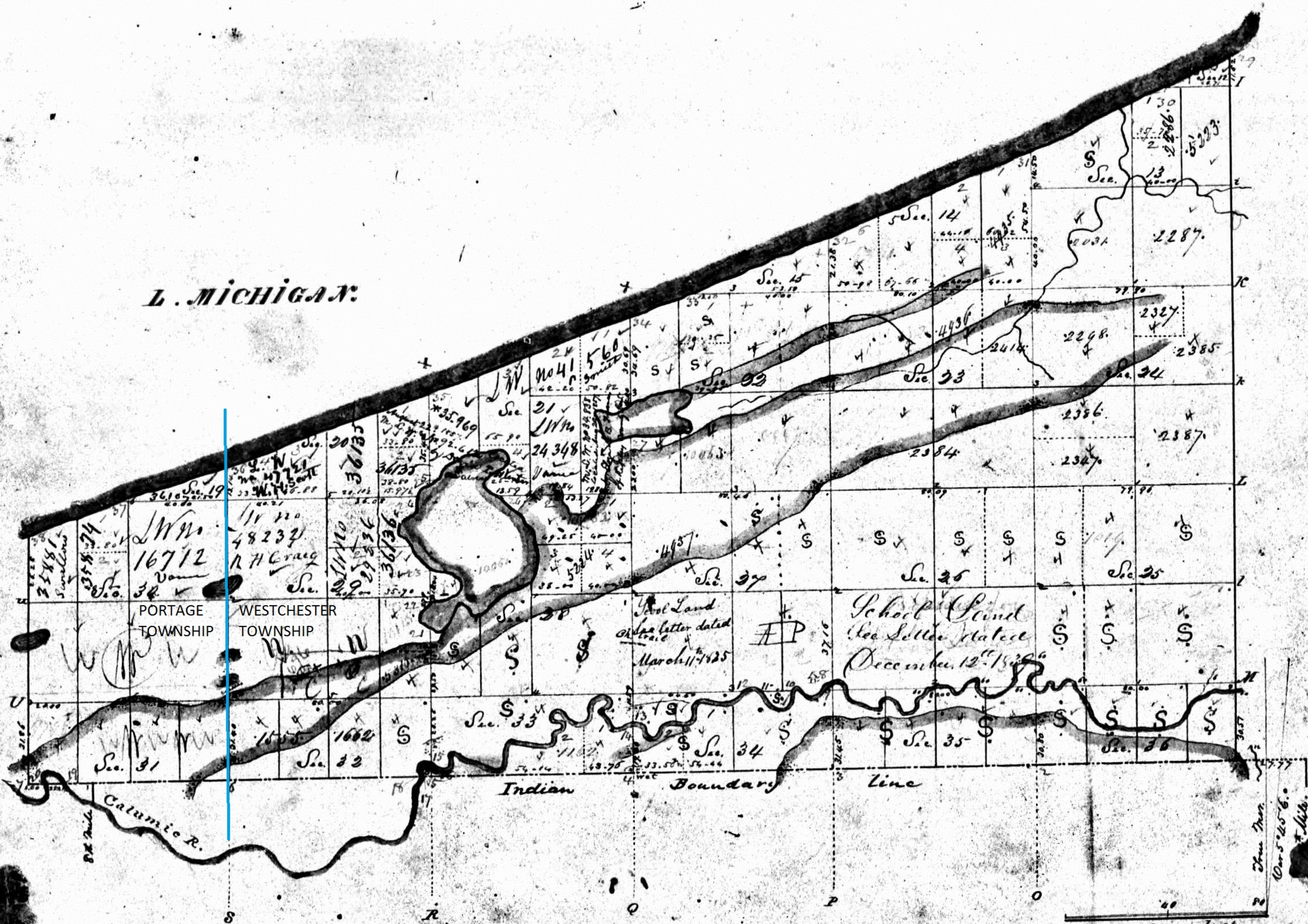
Surveyor Gen. Office Cincinnati
July 9th 1835.

This is a certifica copy of the
Original in this office.

J. M. Suttle S.G.

IND

Township N^o XXVII North, Range N^o VI West 2nd Mer.



Contents

Section	Area	Acres
f. 12		15 21
Ex NE 13		80
W/4		70 73
SW		96 54
SE		320
Ex NE 14		100 72
W part		84 16
W/4		118 64
f. 15		57 19
f. 19		27 20
Ex SE 20		72 60
W/4		60 73
W/4		80 12
NE 21		73 03
Ex part W/4		92 00
W part		62 40
Ex SE		67 82
W/4		80
Ex 22		320
Ex SW		79 30
W/4		69 65
Ex SW		77 00
W/4		46 15
Sec. 23		640
24		640
25		640
26		640
27		320
W/4		80
Ex SE		72 80
W/4		160
SW		89 28
NE 28		78
SE		160
Ex SW		79 50
W/4		61 94
W part		10 80
NE 29		63 20
SE		75 70
Ex SE		76 40
W/4		320
W/4		320
Ex SW		72 80
W/4		80
Ex SW		80
W/4		80
Ex NE 31		62 91
W/4		63 15
Ex NW		63 36
W/4		61 16
SE part 32		74
Ex NE		60 00
W/4		62 94
Ex NW		62 70
W/4		62 83
W part 33		138 61
SE part		97 90
W part 34		6 10
NW/4		30 61
SE part		112 65
SE part		88 00
Ex NE 35		61 76
W/4		60 88
Ex NW		60 20
W/4		60 70
Ex NE 36		61 10
W/4		61 28
Ex NW		61 00
W/4		61 00
W part		61 00

Annotated by Steven R. Shook, December 2013

Surveyed in April 1830 by Calvin Britain C.S.
 A true copy of the original plat filed in this office.
 Surveyor General's Office
 13th July 1830.
 M. Suttle S.G.

Offered for sale Nov. 1830