

Township N°XXXVIII North. Range N°V, west 2nd Mer.

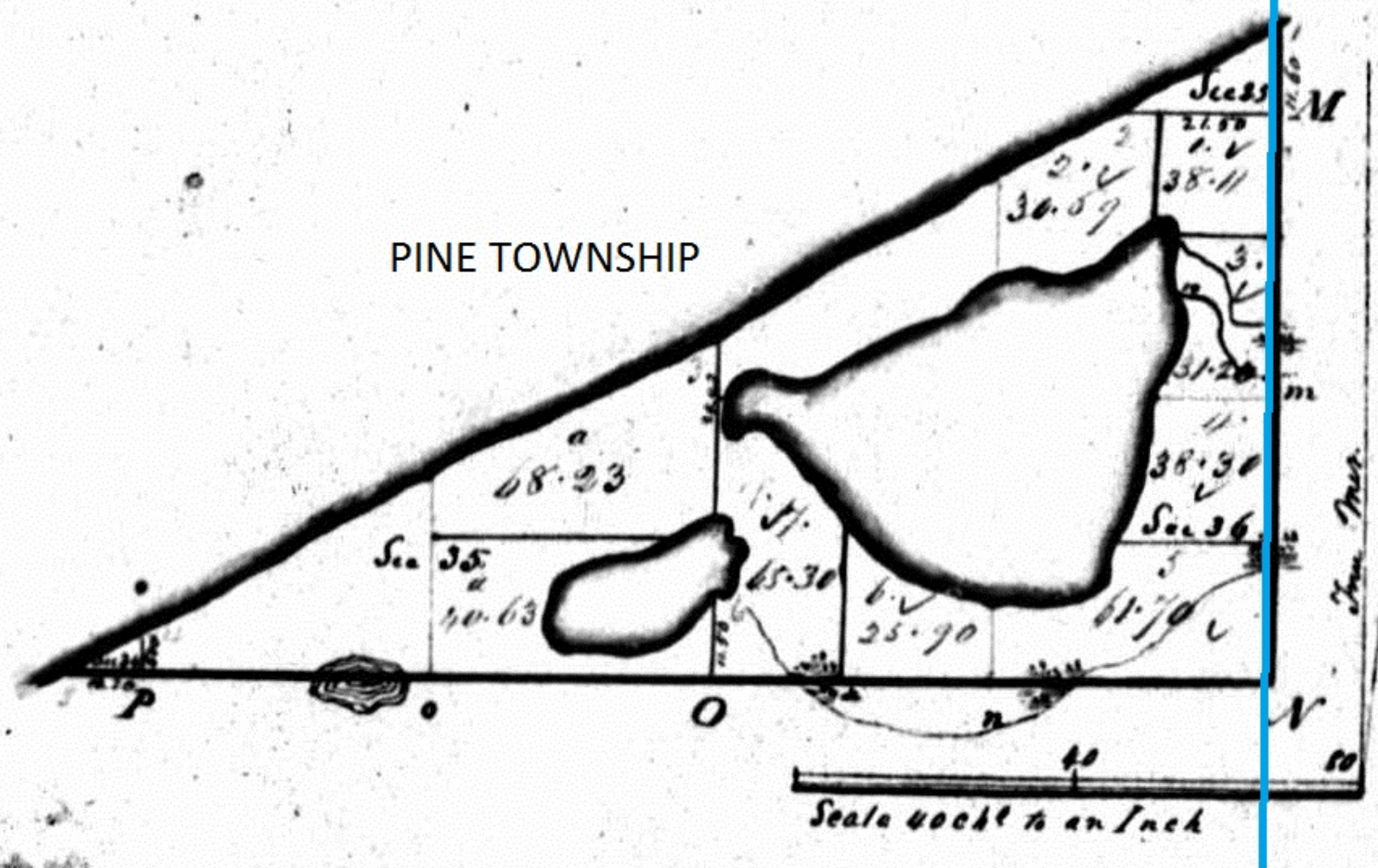
IND

INDIANA
N & W 2 P. M.

Contents		
Sections	Acres	No
Sec 25	✓	1247
Sec 34	✓	255
Sec E 1/2 35	✓	10886
Sec W 1/2 35	✓	6540
Sec NE 36	✓	10000
Sec NW 36	✓	4235
Sec 18	✓	10000
Sec SW 36	✓	9120
Total		52283

Annotated by Steven R. Shook, December 2013

L. MICHIGAN



IND

960

Surveyed in November 1829 by J. H. Henderson & P.

A true copy of the Original plat, filed in this office
 Surveyor General's office.

1. April 1830.

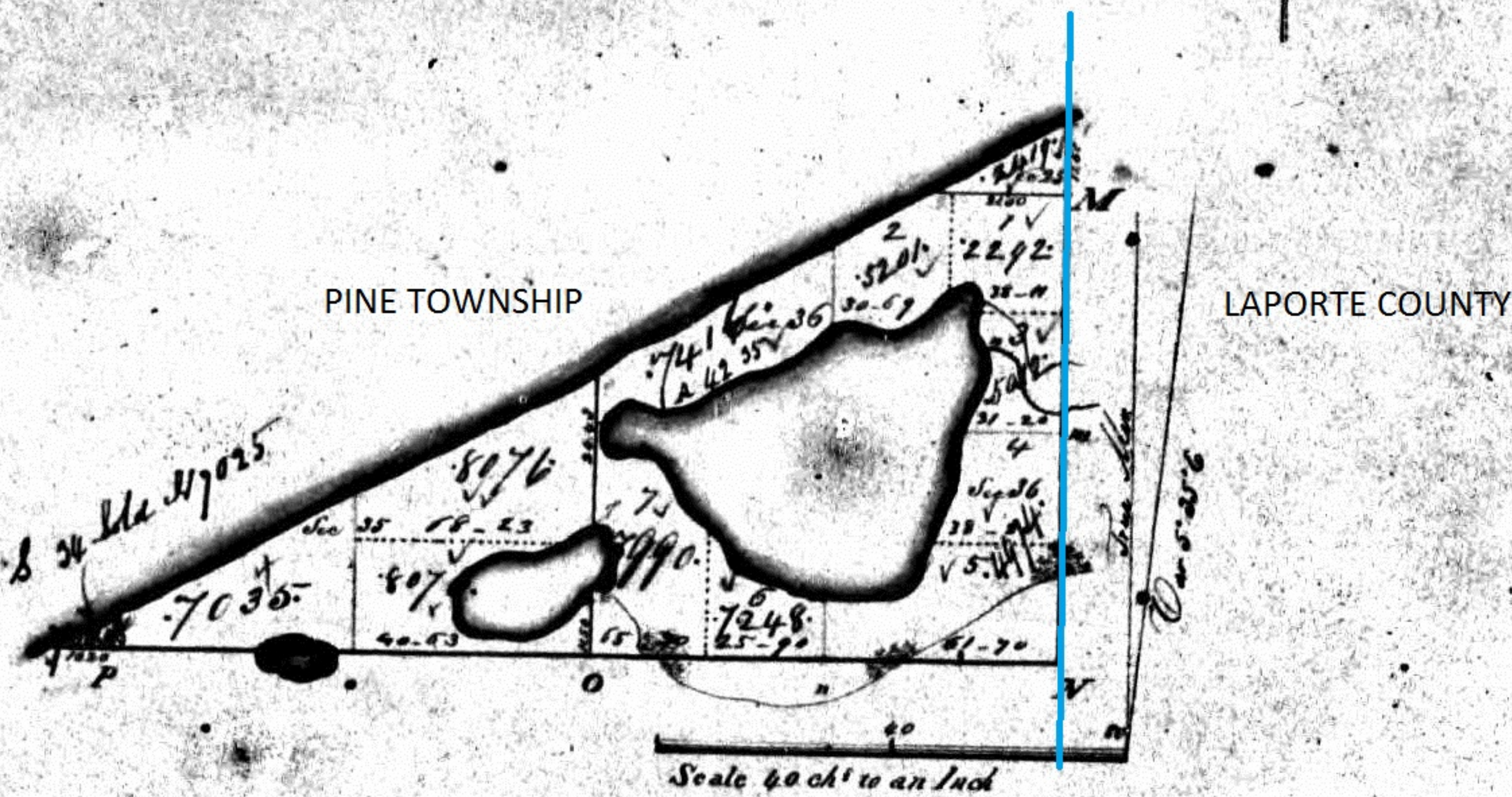
Wm. C. C. S. G.

Township N^o XXXVIII North, Range N^o V. West 2nd Mer.

Contents	
Sections	Acres
frac. 25	1247
frac. 34	255
fr. 6 1/2 35	11886
fr. 40 1/2	6841
fr. 16 36	10000
fr. 17	4235
fr. 56	1577
fr. 57	9131
Total	52283

Annotated by Steven R. Shook, December 2013

LAKE MICHIGAN



Surveyed in November 1829 by Chas. Henderson D.S.

A true copy of the original plat filed in the office of the
Surveyor General's office

Offered for Sale Nov. 1830 15th July 1830

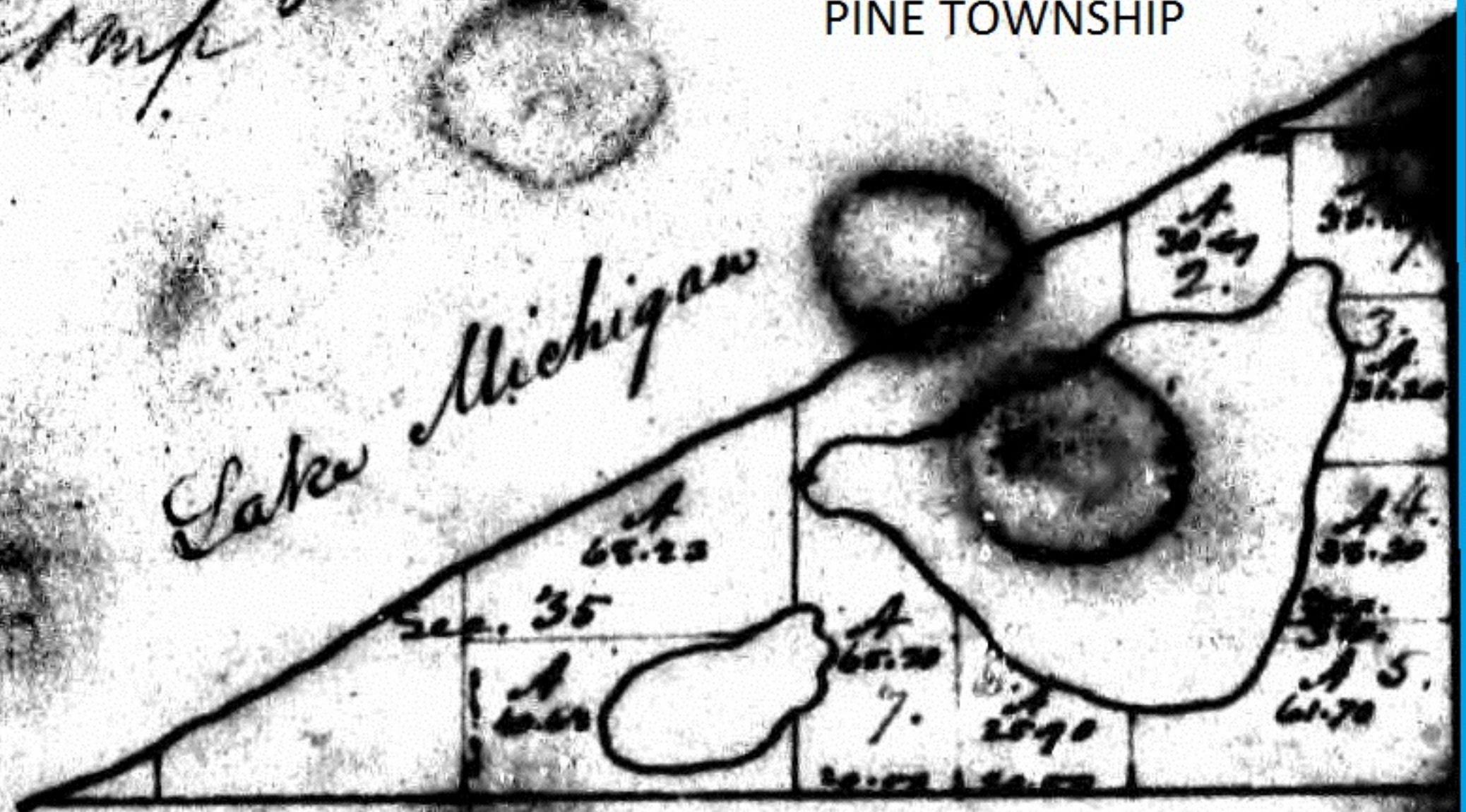
Township N. 38 N. Range N. 5 W. 2nd Mer.

Annotated by Steven R. Shook, December 2013

Comp^d

PINE TOWNSHIP

Lake Michigan



LAPORTE COUNTY

out of Indiana Vol. 5. 16.

Rec. June 22, 1834

The foregoing subdivisions of fractional sections, are truly copied from the original plat in this office.

Surveyor General's Office
Cincinnati, May 23rd 1834. M. T. Williams
Superintendent