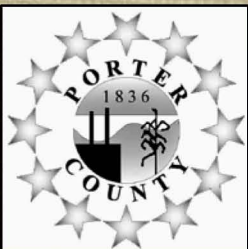


ORIGINAL
GOVERNMENT
SURVEYS
PORTER
COUNTY



Scanned From Records of
Porter County Surveyor's Office
155 Indiana Avenue Suite 303 Valparaiso, IN 46383
Phone (219) 465-3560
Kevin D. Breitzke, P.E., L.S. - Porter County Surveyor
Copyright © 2012 Porter County, IN. All Rights Reserved.
Disclaimer: The information of this drawing is believed to be reliable, but no representations, guarantees or warranties of any kind are made as to its accuracy, currency, revision, or suitability for particular applications.



Scanned From Records of
Porter County Surveyor's Office
155 Indiana Avenue Suite 303 Valparaiso, IN 46383
Phone (219) 465-3560
Kevin D. Breitzke, P.E., L.S. - Porter County Surveyor
Copyright © 2012 Porter County, IN. All Rights Reserved.
Disclaimer: The information of this drawing is believed to be reliable, but no representations, guarantees or warranties of any kind are made as to its accuracy, currency, revision, or suitability for particular applications.

Plats of Congressional Townships
Porter County
Indiana

177

Copied by B. W. DeGroot
Civil Engineer
1875

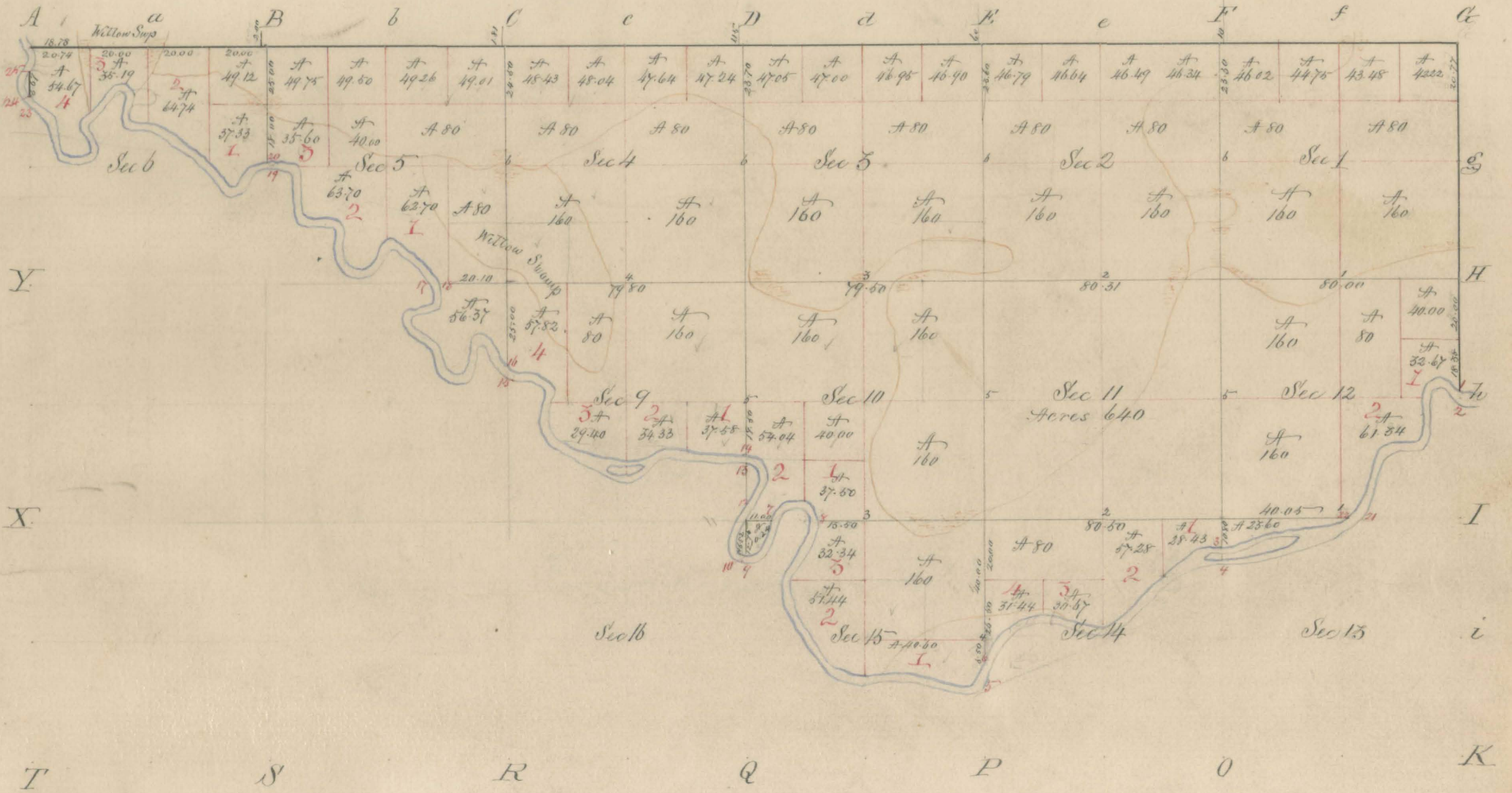


Scanned From Records of
Porter County Surveyor's Office
 155 Indiana Avenue Suite 303 Valparaiso, IN 46383
 Phone (219) 465-3560

Kevin D. Breitzke, P.E., L.S. - Porter County Surveyor

Copyright © 2012 Porter County, IN. All Rights Reserved.
 Disclaimer: The information of this drawing is believed to be reliable, but no representations, guarantees or warranties of any kind are made as to its accuracy, currency, revision, or suitability for particular applications.

Town 32 Range 5



Surveyed in 1834 by E Van Ness Sept Sur Var S. 35 E Scale one inch to 40 Chains

*State of Indiana:
 Office of Auditor of State,*

*I, E Henderson Auditor of State of the State of Indiana, hereby
 Certify that I have compared the above Plat with the original
 Township Plat of the Records of Surveys of United States Lands
 of Indiana, and find the same a true copy.*

*Given under my hand and official
 Seal at Indianapolis, this March
 18th A.D. 1875.*

*E. Henderson
 Auditor of State.*



Town 32 Range 6



Scanned From Records of
Porter County Surveyor's Office
155 Indiana Avenue Suite 303 Valparaiso, IN 46383
Phone (219) 465-3560
Kevin D. Breitzke, P.E., L.S. - Porter County Surveyor
Copyright © 2012 Porter County, IN. All Rights Reserved.
Disclaimer: The information of this drawing is believed to be reliable, but no representations, guarantees or warranties of any kind are made as to its accuracy, currency, revision, or suitability for particular applications.



Surveyed in 1834 by Uriah Biggs best Surveyor bar 5.40' E Scale one inch to 40 chains

State of Indiana,
Office of Auditor of State,

J. E. Henderson Auditor of State of the State of Indiana, hereby certify that I have compared the above Plat with the original Township Plat of the Records of Surveys of United States lands of Indiana, and find the same a true copy.

Given under my hand and official seal at Indianapolis, this 27th March 18th AD. 1895.

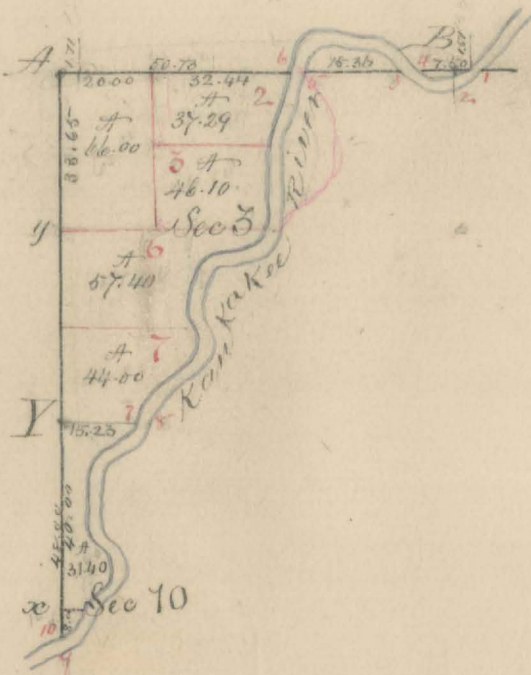
J. E. Henderson,
Auditor of State.



Part of east half Town 52 Range 7



Scanned From Records of
Porter County Surveyor's Office
155 Indiana Avenue Suite 303 Valparaiso, IN 46383
Phone (219) 465-3560
Kevin D. Breitzke, P.E., L.S. - Porter County Surveyor
Copyright © 2012 Porter County, IN. All Rights Reserved.
Disclaimer: The information of this drawing is believed to be reliable, but no representations, guarantees or warranties of any kind are made as to its accuracy, currency, revision, or suitability for particular applications.



Surveyed in 1854 by Uriah Biggs Dept Sur - Var 6° 15' E Scale one inch to two chains

State of Indiana,
Office of Auditor of State,

I, E. Henderson Auditor of State of the State of Indiana,
hereby Certify that I have compared the above Plat
with the original Township Plat of the Records of Surveys
of United States lands of Indiana, and find the same
a true copy a part of the east half of said original.
Given under my hand and
official seal at Indianapolis,
this 7th March 18th A.D. 1895.

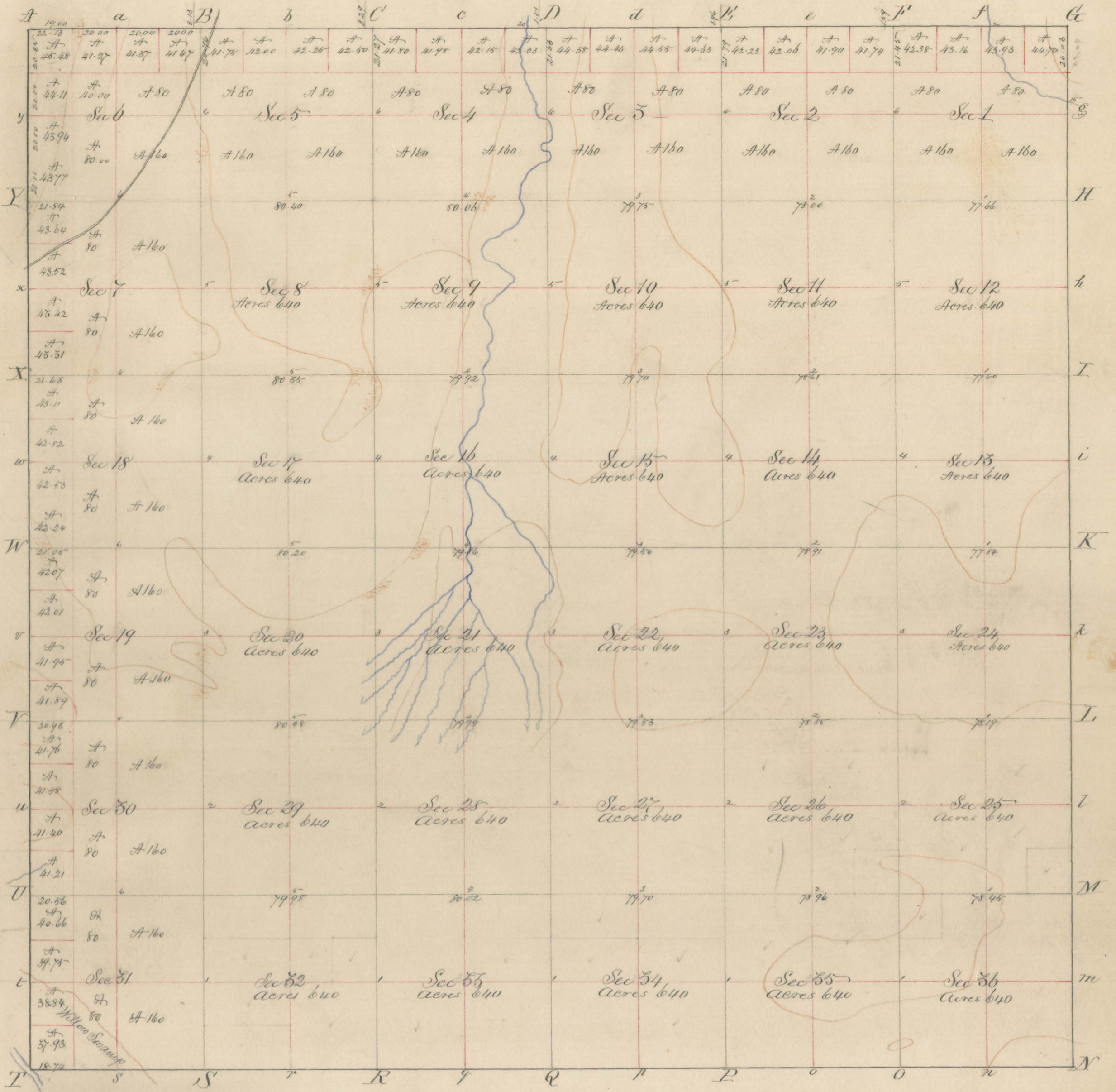


E. Henderson,
Auditor of State.

Town 33 Range 5



Scanned From Records of
 Porter County Surveyor's Office
 155 Indiana Avenue Suite 303 Valparaiso, IN 46383
 Phone (219) 465-3560
 Kevin D. Breitzke, P.E., L.S. - Porter County Surveyor
 Copyright © 2012 Porter County, IN. All Rights Reserved.
 Disclaimer: The information of this drawing is believed to be reliable, but no representations, guarantees or warranties of any kind are made as to its accuracy, currency, revision, or suitability for particular applications.



Surveyed in 1835 by Precinct Smith Dept Sur Var 6° 25' E Scale one inch to 40 Chaus

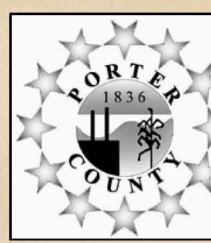
State of Indiana:
 Office of Auditor of State,

I, E Henderson Auditor of State of the State of Indiana,
 hereby Certify, that I have compared the above Plat with
 the original Township Plat of the Records of Surveys of United
 States Lands of Indiana, and find the same a true copy.
 Given under my hand and official seal,
 at Indianapolis, this March 18th AD 1875.

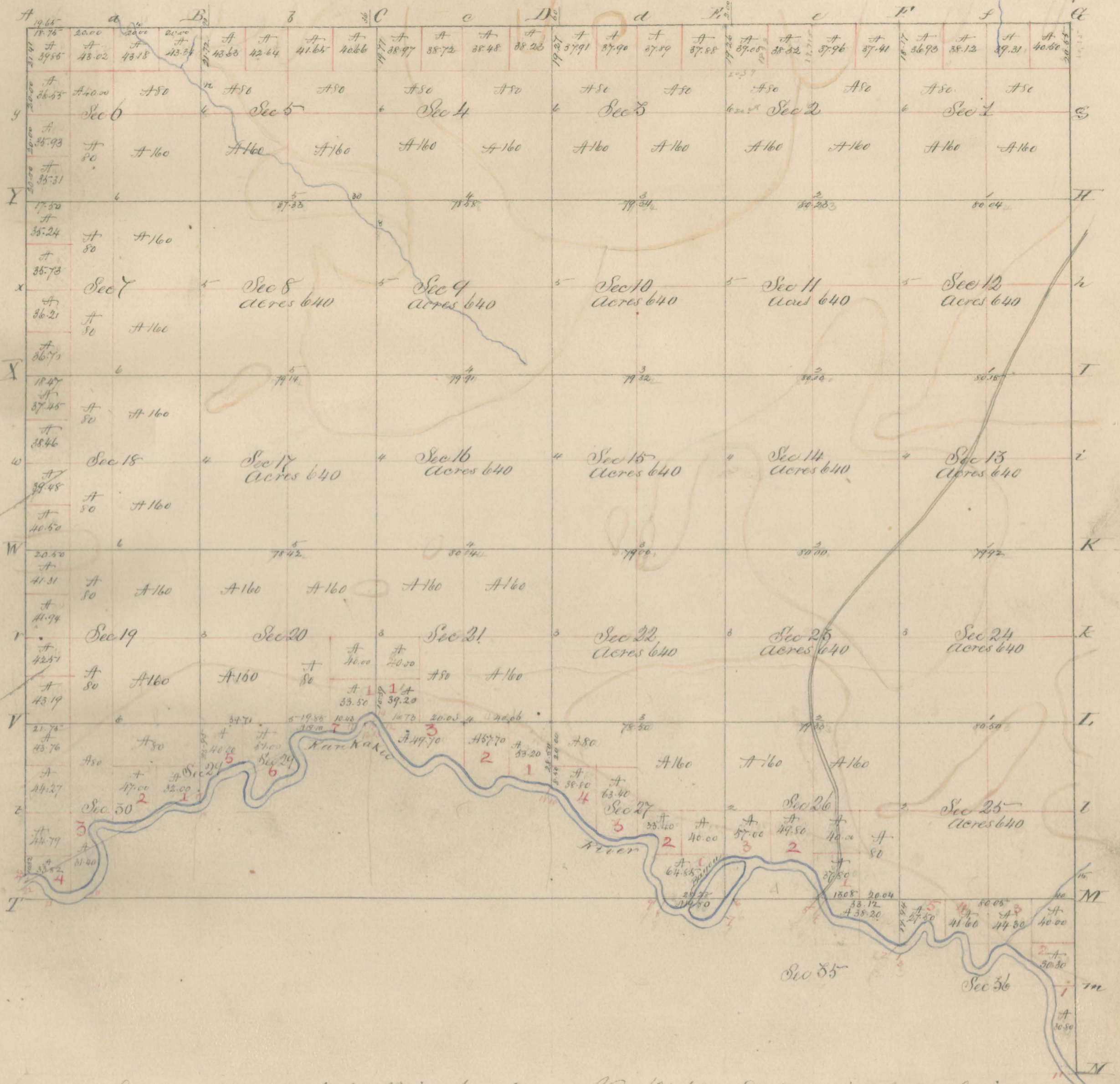
E Henderson,
 Auditor of State.



Town 33 Range 6



Scanned From Records of
Porter County Surveyor's Office
 155 Indiana Avenue Suite 303 Valparaiso, IN 46383
 Phone (219) 465-3560
 Kevin D. Breitzke, P.E., L.S. - Porter County Surveyor
 Copyright © 2012 Porter County, IN. All Rights Reserved.
 Disclaimer: The information of this drawing is believed to be reliable, but no representations, guarantees or warranties of any kind are made as to its accuracy, currency, revision, or suitability for particular applications.



Surveyed in 1834 by Uriah Biggs Dept Sur Var 6° 55' E Scale one inch to 40 chains

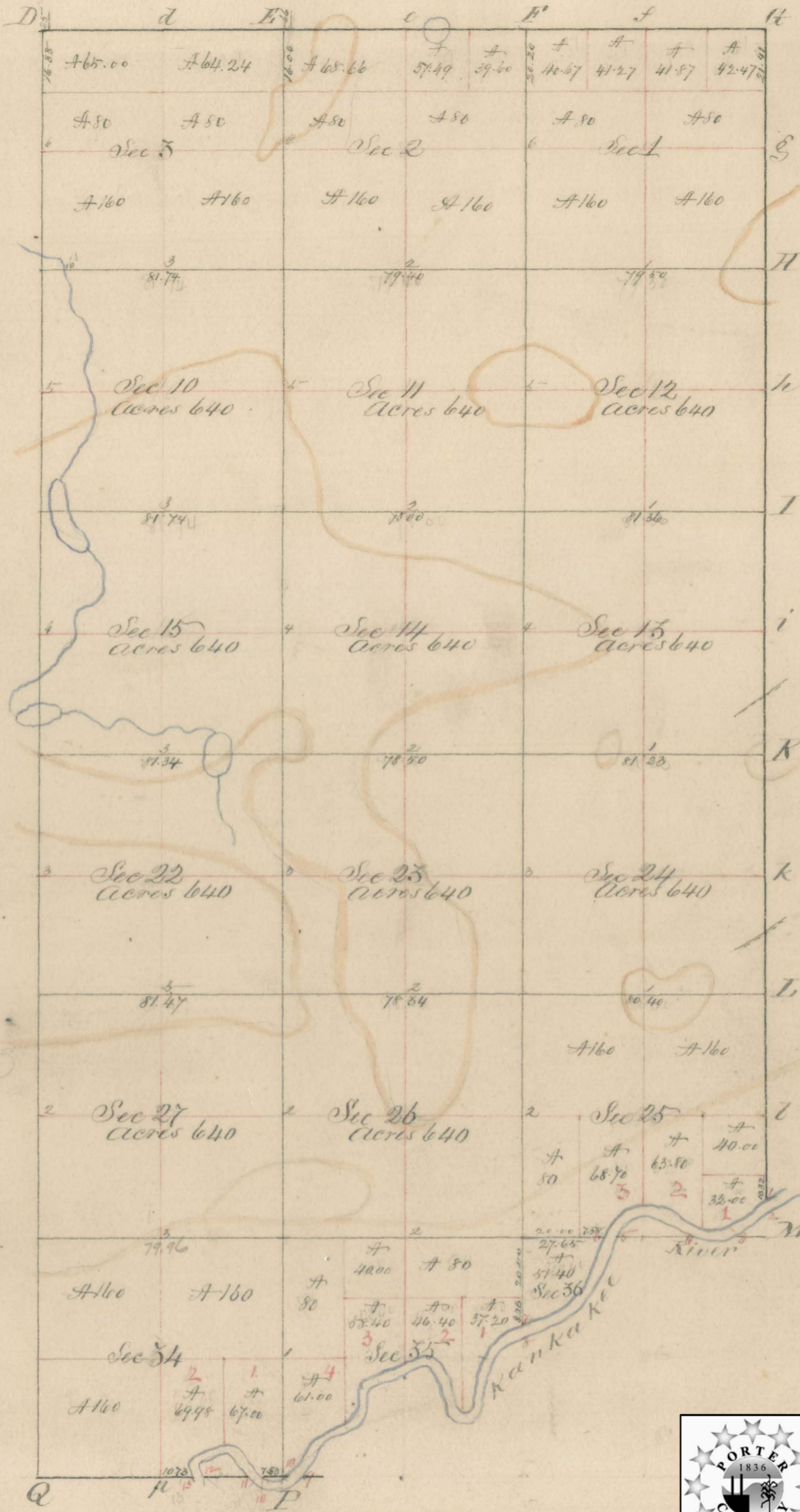


State of Indiana
 Office of Auditor of State,
 I, E. Henderson Auditor of State of the State of
 Indiana, hereby Certify that I have compared
 the above Plat with the original Township
 Plat of the Records of Surveys of United States
 lands of Indiana, and find the same
 a true Copy.

Given under my hand and
 official Seal at Indianapolis
 this March 18th A.D. 1875.

E. Henderson
 Auditor of State.

East half Town 33 Range 1



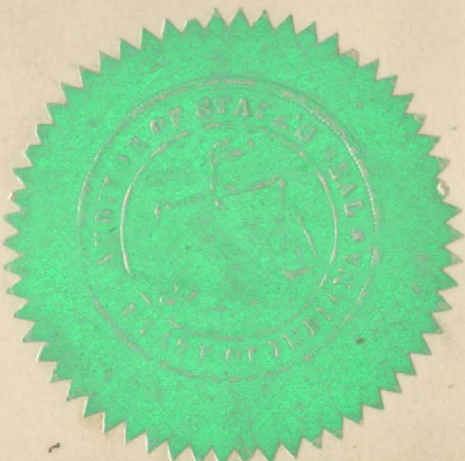
34
57.74
21
20



Scanned From Records of
Porter County Surveyor's Office
 155 Indiana Avenue Suite 303 Valparaiso, IN 46383
 Phone (219) 465-3560
Kevin D. Breitzke, P.E., L.S. - Porter County Surveyor

Copyright © 2012 Porter County, IN. All Rights Reserved.
 Disclaimer: The information of this drawing is believed to be reliable, but no representations, guarantees or warranties of any kind are made as to its accuracy, currency, revision, or suitability for particular applications.

Surveyed in 1834 by Uriah Biggs Dept. Sur. Var 6° 32' E Scaute one inch to 40 chains



State of Indiana,
 Office of Auditor of State.

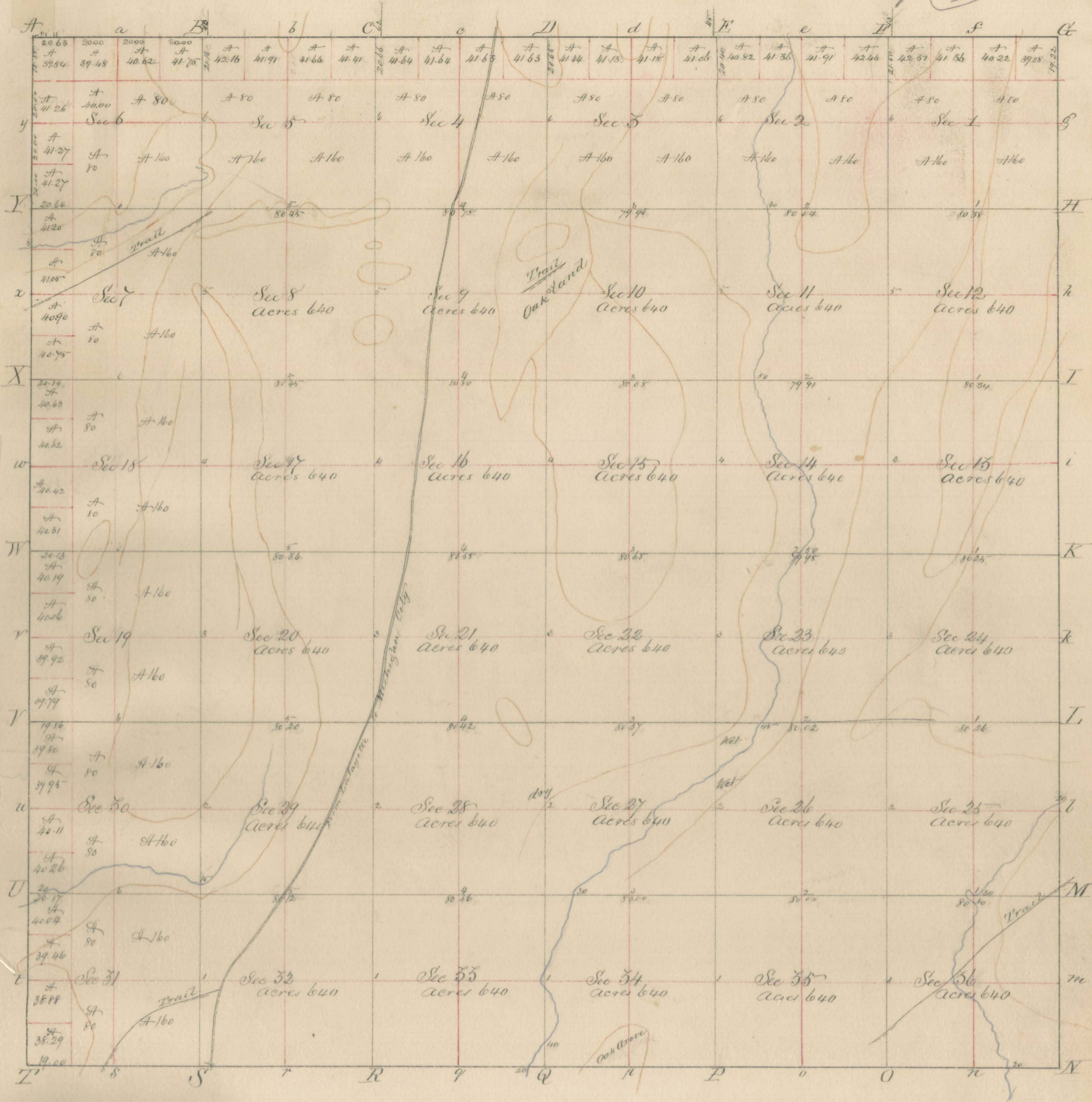
I, E. Henderson Auditor of State of the State of Indiana,
 hereby certify that I have compared the above Plat
 with the original Township Plat of the Records of
 Surveys of United States lands of Indiana, and
 find the same a true copy of the east half of said original.

Given under my hand
 and official Seal at
 Indianapolis, this March
 18th A. D. 1875.

E. Henderson
 Auditor of State.

Town 34 Range 5

PER FLD NOTES
0.13 NOT 0.43
SB



Surveyed in 1834 by Jeremiah Smith Capt Sur Var 5° 30' E Scale one inch to 100 chains

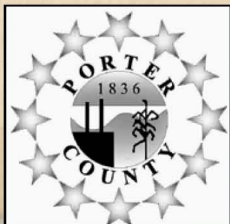
State of Indiana:

Office of Auditor of State:

J. E. Henderson Auditor of State of the State of Indiana, hereby Certify, that I have compared the above Plat with the original Township Plat of the Records of Surveys of United States lands of Indiana, and find the same a true copy.

Given under my hand and official seal at Indianapolis, this 20th March 18th A.D. 1875.

E. Henderson,
Auditor of State.



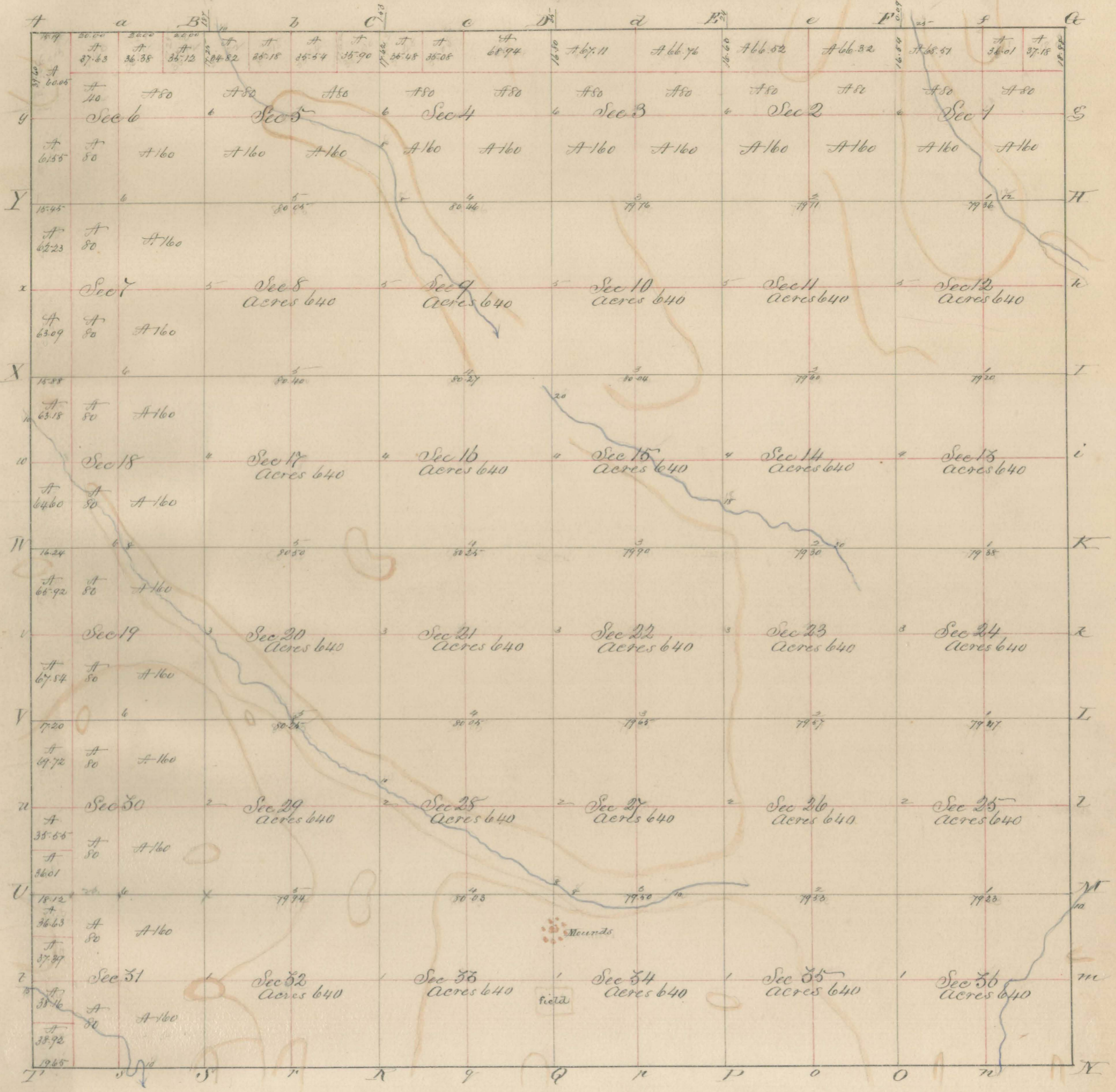
Scanned From Records of
Porter County Surveyor's Office
155 Indiana Avenue Suite 303 Valparaiso, IN 46383
Phone (219) 465-3560
Kevin D. Breitzke, P.E., L.S. - Porter County Surveyor

Copyright © 2012 Porter County, IN. All Rights Reserved.
Disclaimer: The information of this drawing is believed to be reliable, but no representations, guarantees or warranties of any kind are made as to its accuracy, currency, revision, or suitability for particular applications.

Town 34 Range 6



Scanned From Records of
Porter County Surveyor's Office
 155 Indiana Avenue Suite 303 Valparaiso, IN 46383
 Phone (219) 465-3560
 Kevin D. Breitzke, P.E., L.S. - Porter County Surveyor
 Copyright © 2012 Porter County, IN. All Rights Reserved.
 Disclaimer: The information of this drawing is believed to be reliable, but no representations, guarantees or warranties of any kind are made as to its accuracy, currency, revision, or suitability for particular applications.



Surveyed in 1834 by William Clark kept Sur Var 5.55 E Scale one inch to 40 chains

State of Indiana,
 Office of Auditor of State,

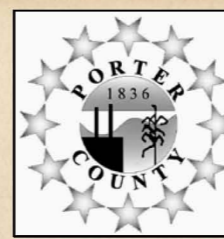
J. E. Henderson Auditor of State of the State of Indiana, hereby Certify that I have compared the above Plat with the original Township Plat of the Records of Surveys of United States lands of Indiana, and find the same a true copy.

Given under my hand and official Seal at Indianapolis, this March 18th A.D. 1875.

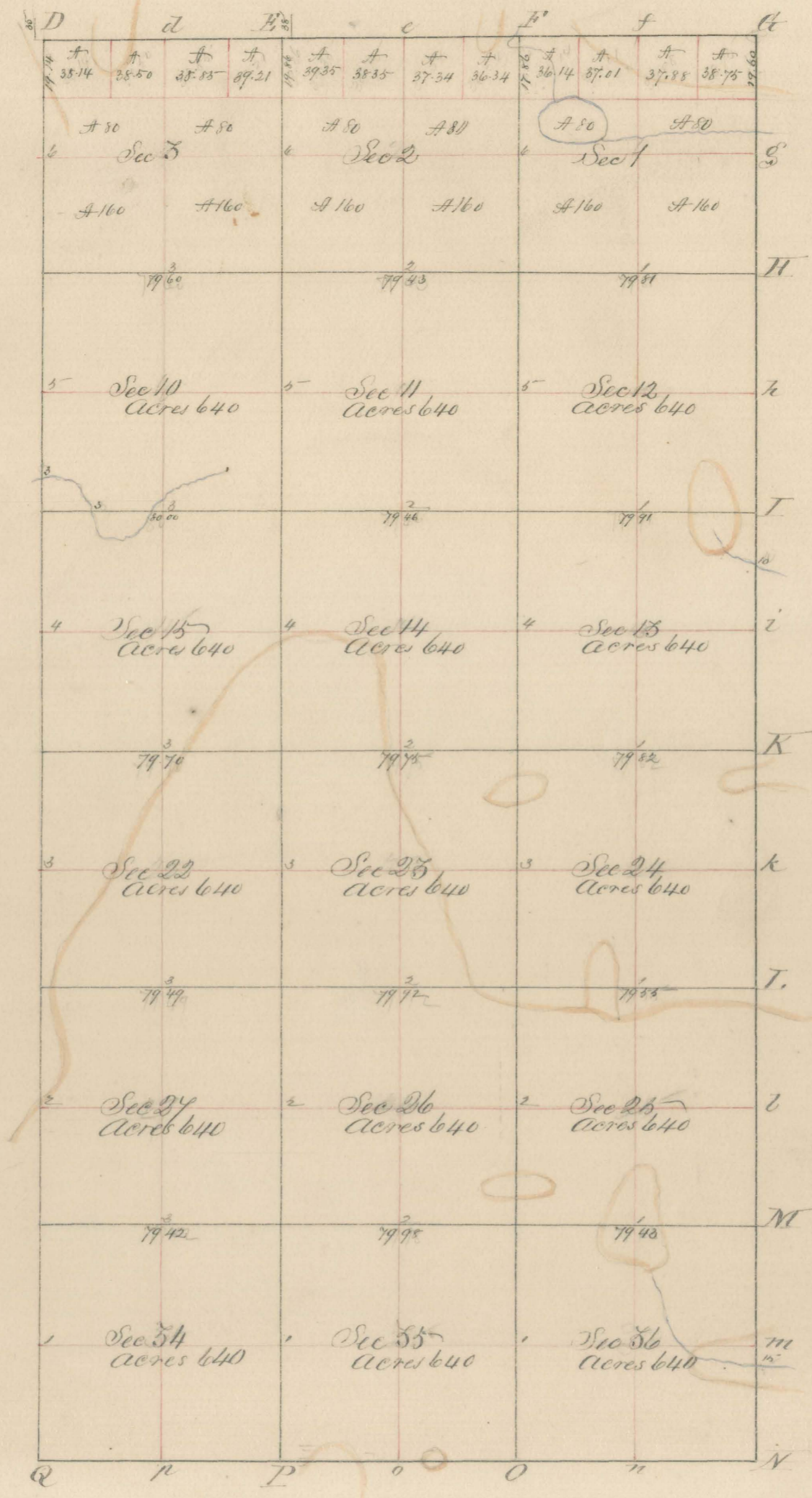
J. E. Henderson
 Auditor of State.



East half Town 34 Range 7



Scanned From Records of
Porter County Surveyor's Office
 155 Indiana Avenue Suite 303 Valparaiso, IN 46383
 Phone (219) 465-3560
Kevin D. Breitzke, P.E., L.S. - Porter County Surveyor
 Copyright © 2012 Porter County, IN. All Rights Reserved.
 Disclaimer: The information of this drawing is believed to be reliable, but no representations, guarantees or warranties of any kind are made as to its accuracy, currency, revision, or suitability for particular applications.



Surveyed in 1854 by William Clarke, Dep't Sur. Var. 6° E. Scale one inch to 40 Ch.

State of Indiana;
 Office of Auditor of State,

I, E. Henderson, Auditor of State of the State of Indiana, hereby Certify that I have compared the above Plat with the original Township Plat of the Records of Surveys of United States lands of Indiana, and find the same a true copy of the East half of said original.

Given under my hand and official Seal at Indianapolis, this March 18th A.D. 1875.

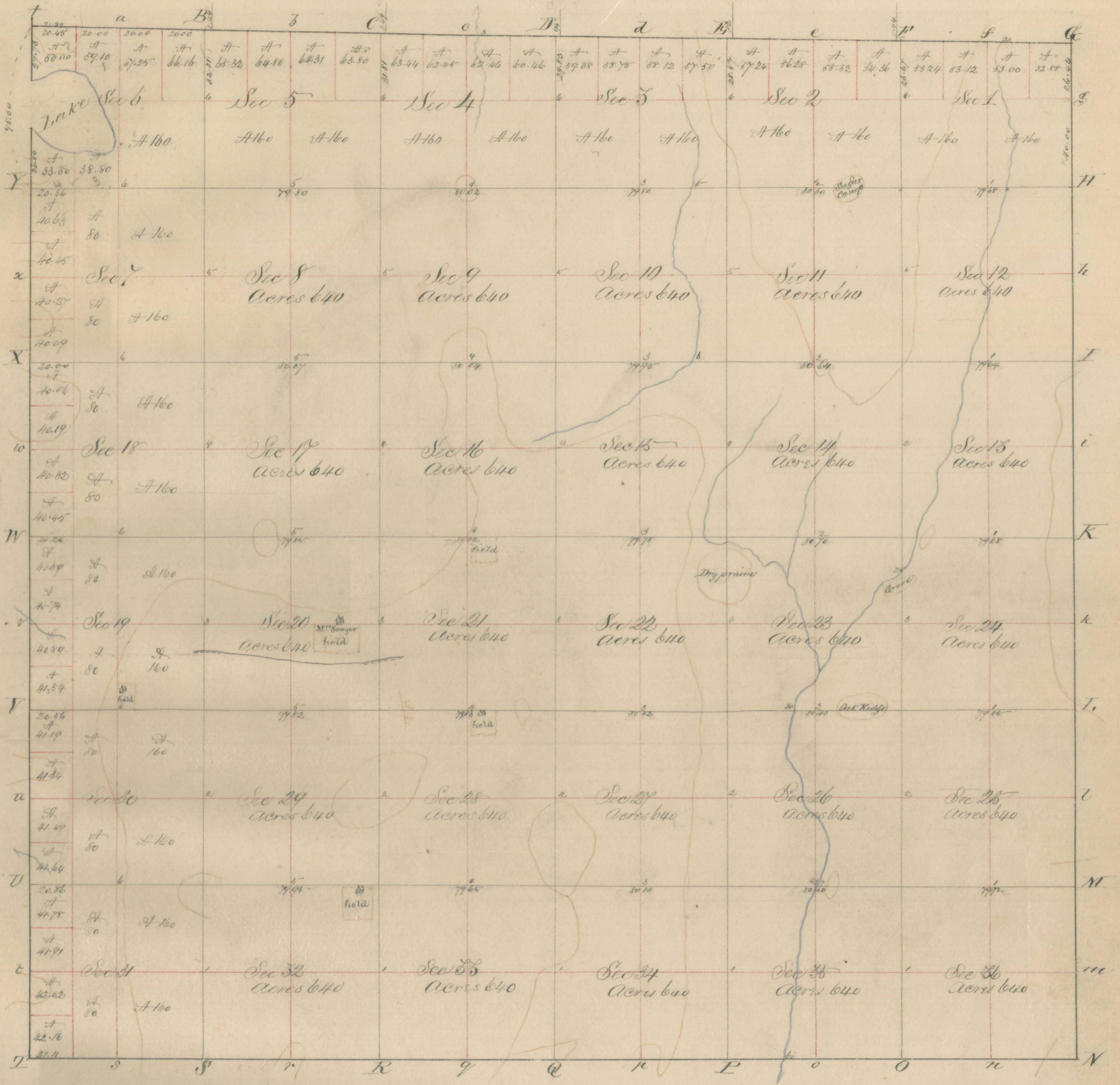
E. Henderson
 Auditor of State.



Town 35 Range 5



Scanned From Records of
Porter County Surveyor's Office
 155 Indiana Avenue Suite 303 Valparaiso, IN 46383
 Phone (219) 465-3560
 Kevin D. Breitzke, P.E., L.S. - Porter County Surveyor
 Copyright © 2012 Porter County, IN. All Rights Reserved.
 Disclaimer: The information of this drawing is believed to be reliable, but no representations, guarantees or warranties of any kind are made as to its accuracy, currency, revision, or suitability for particular applications.



Surveyed in 1834 by William Clark Dep't Sur

Var 6.10'E Scale one inch to 40 Chains

State of Indiana:

Office of Auditor of State,

J. E. Henderson Auditor of State of the State of Indiana hereby Certify, that I have compared the above Plat with the original Township Plat of the Records of Surveys of United States lands of Indiana, and find the same a true copy.

Given under my hand and official Seal at Indianapolis this 18th March 18th AD 1895.

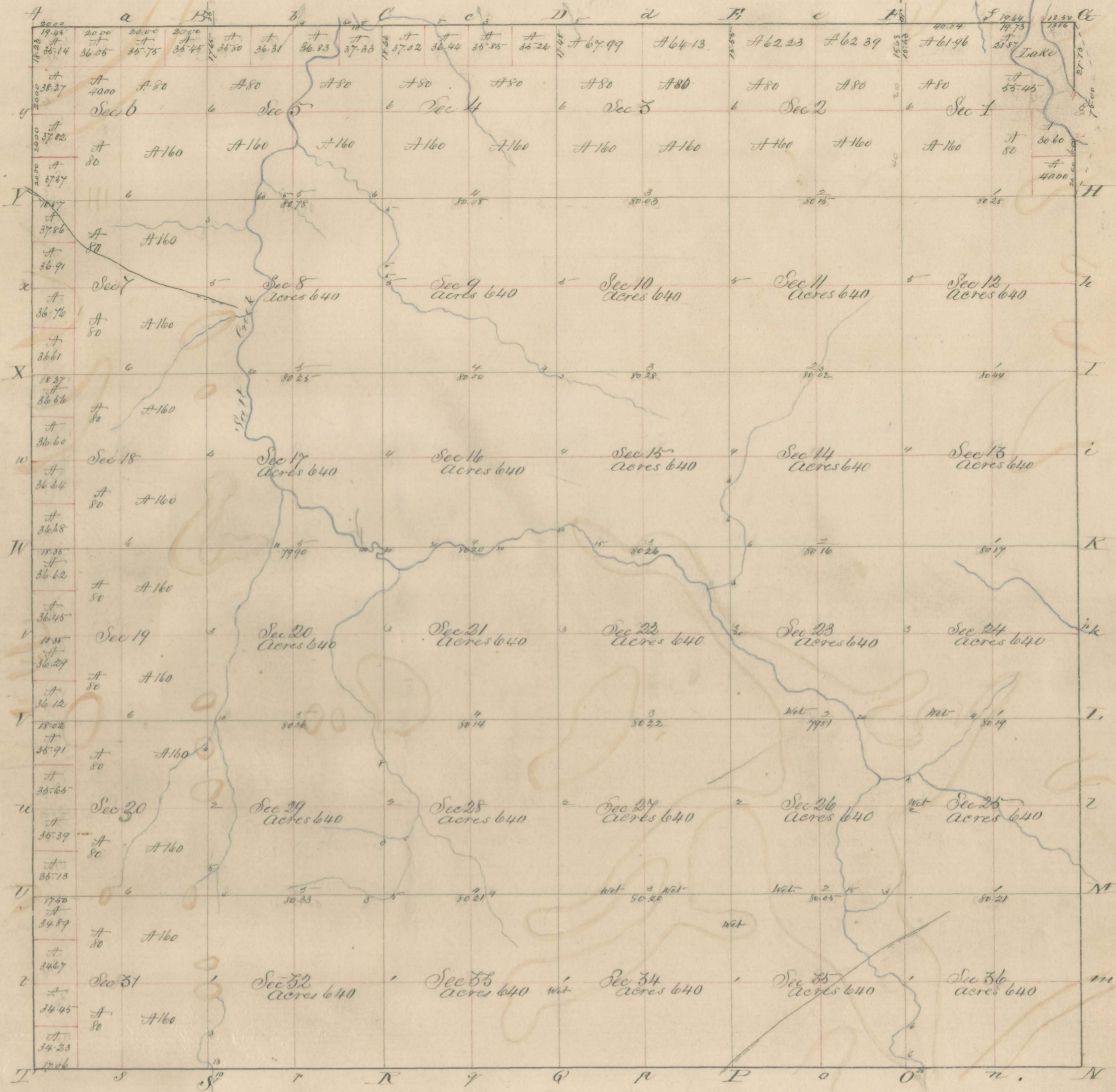
J. E. Henderson,
 Auditor of State.



Town 35 Range 6



Scanned From Records of
 Porter County Surveyor's Office
 155 Indiana Avenue Suite 303 Valparaiso, IN 46383
 Phone (219) 465-3560
 Kevin D. Breitzke, P.E., L.S. - Porter County Surveyor
 Copyright © 2012 Porter County, IN. All Rights Reserved.
 Disclaimer: The information of this drawing is believed to be reliable, but no
 representations, guarantees or warranties of any kind are made as to its accuracy,
 currency, revision, or suitability for particular applications.



Surveyed in 1834 by Sylvester Utley Dep't Sur

Var 6° E Scale one inch to 40 chains

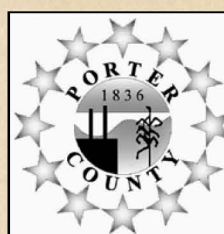


State of Indiana,
 Office of Auditor of State,
 I, E. Henderson Auditor of State of the state of Indiana,
 hereby Certify that I have compared the above Plat
 with the original Township Plat of the Records of Surveyors
 of United States lands of Indiana, and find the
 same a true Copy.

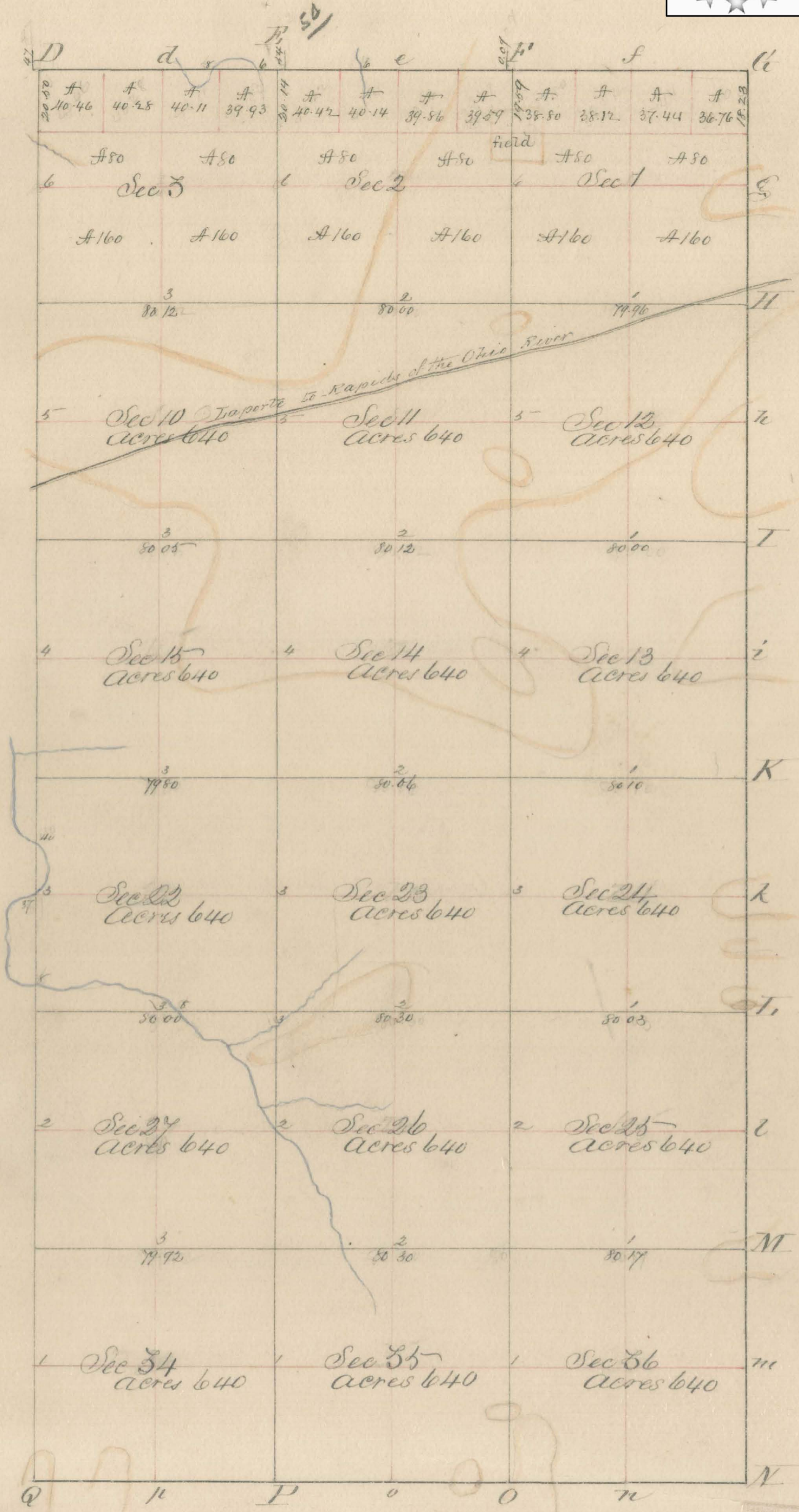
Given under my hand and
 official seal at Indianapolis
 this March 18th A.D. 1895.

E. Henderson,
 Auditor of State.

East half Town 35 Range 1



Scanned From Records of
Porter County Surveyor's Office
 155 Indiana Avenue Suite 303 Valparaiso, IN 46383
 Phone (219) 465-3560
Kevin D. Breitzke, P.E., L.S. - Porter County Surveyor
 Copyright © 2012 Porter County, IN. All Rights Reserved.
 Disclaimer: The information of this drawing is believed to be reliable, but no representations, guarantees or warranties of any kind are made as to its accuracy, currency, revision, or suitability for particular applications.



Surveyed in 1834 by Andrew Burnside Dep't Sur. Var 6° 20' E Scale one inch to 40 chains



State of Indiana,
 Office of Auditor of State,
 I, E. Henderson Auditor of State of the State of Indiana,
 hereby Certify that I have compared the above Plat
 with the original Township Plat of the Records of surveys
 of United States lands of Indiana, and find the same
 a true Copy of the
 east half of said
 original.

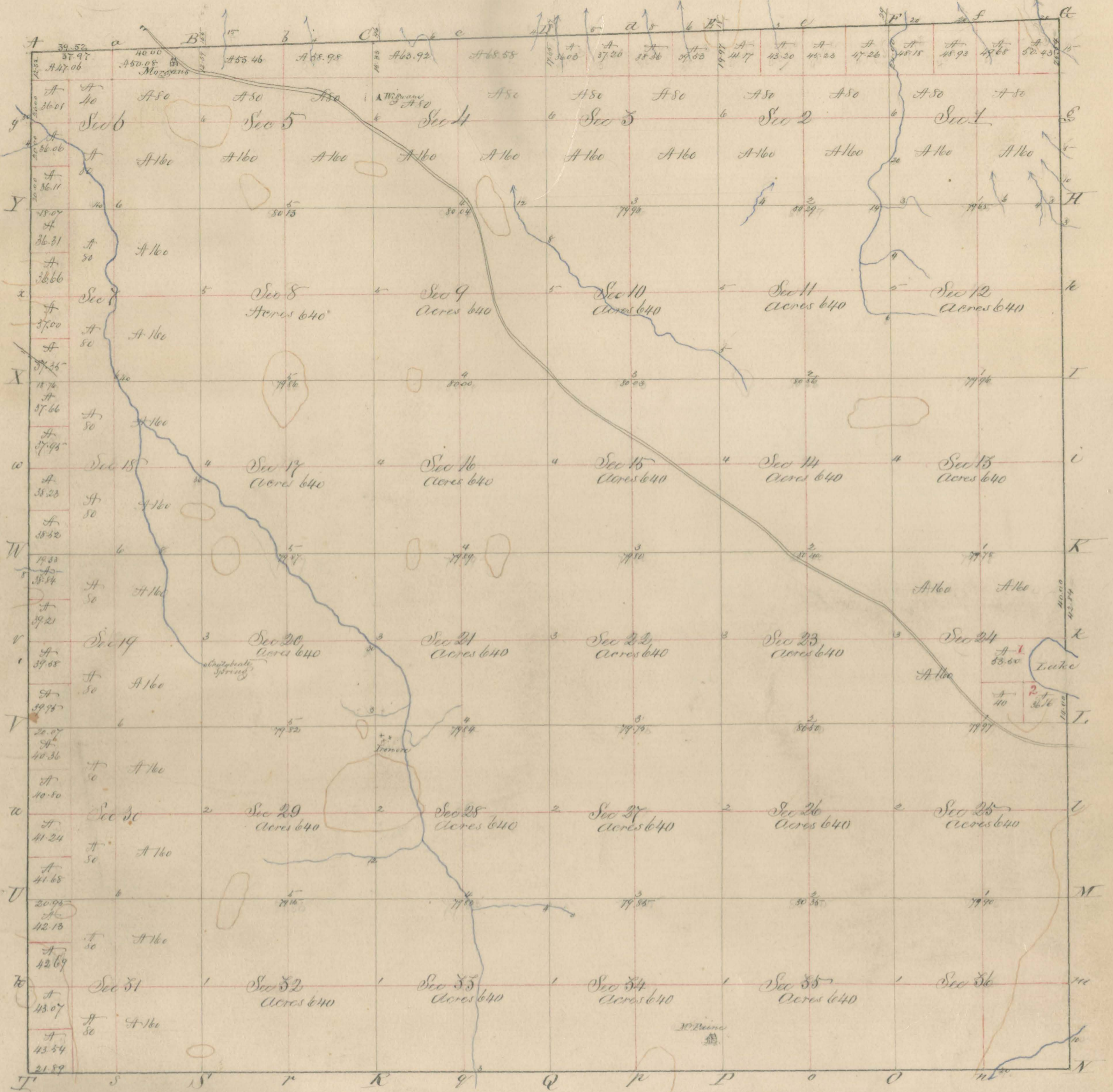
Given under my hand and
 official Seal at Indianapolis,
 this March 18th A.D. 1895.

E. Henderson
 Auditor of State.

Town 36 Range 5



Scanned From Records of
 Porter County Surveyor's Office
 155 Indiana Avenue Suite 303 Valparaiso, IN 46383
 Phone (219) 465-3560
 Kevin D. Breitzke, P.E., L.S. - Porter County Surveyor
 Copyright © 2012 Porter County, IN. All Rights Reserved.
 Disclaimer: The information of this drawing is believed to be reliable, but no
 representations, guarantees or warranties of any kind are made as to its accuracy,
 currency, revision, or suitability for particular applications.



Surveyed in 1834 by William Clark Sept. Sur Var 7.02'E Scale 40 Chains to one inch.

State of Indiana,
 Office of Auditor of State;

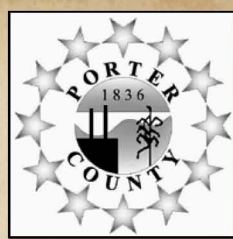
I, E. Henderson Auditor of State of the State of Indiana,
 hereby Certify that I have compared the above Plat
 with the original Township Plat of the Records of Surveys
 of United States lands of Indiana, and find the same
 a true copy.

Given under my hand and official
 Seal at Indianapolis, this 23rd March
 18th A.D. 1845.

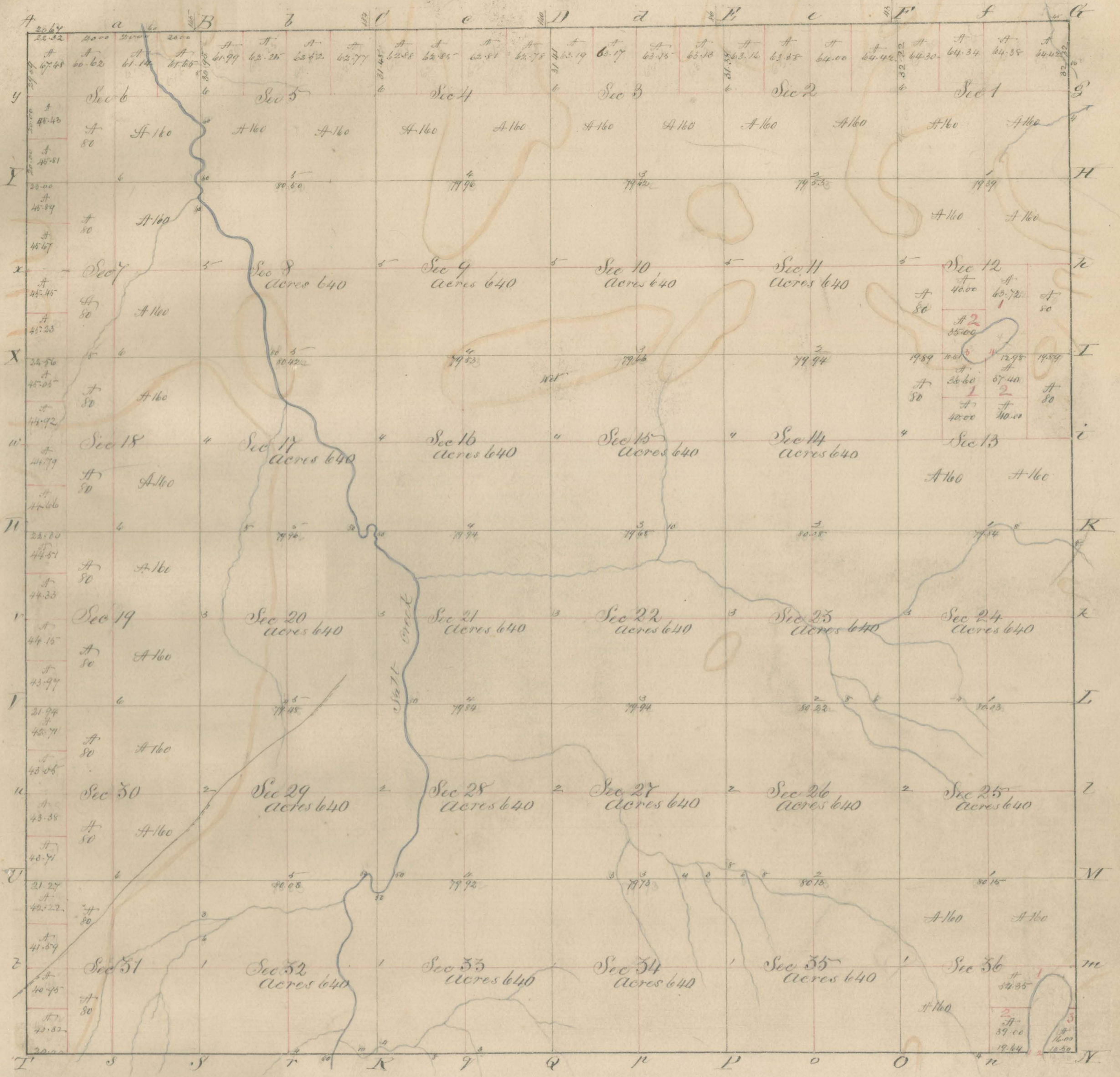
E. Henderson,
 Auditor of State.



Town 36 Range 6



Scanned From Records of
Porter County Surveyor's Office
 155 Indiana Avenue Suite 303 Valparaiso, IN 46383
 Phone (219) 465-3560
 Kevin D. Breitzke, P.E., L.S. - Porter County Surveyor
 Copyright © 2012 Porter County, IN. All Rights Reserved.
 Disclaimer: The information of this drawing is believed to be reliable, but no representations, guarantees or warranties of any kind are made as to its accuracy, currency, revision, or suitability for particular applications.



Surveyed in 1834 by Sylvester Sibbey Sept Sur

Var. S. 17' E Scale one inch to 40 Chains

State of Indiana;

Office of Auditor of State,

J. E. Henderson Auditor of State of the state of Indiana,
 hereby Certify that I have compared the above Plat
 with the original Township Plat of the Records of Surveys
 of United States lands of Indiana, and find the same
 a true copy.

Given under my hand and
 official seal at Indianapolis,
 this 5th March 18th A.D. 1895.

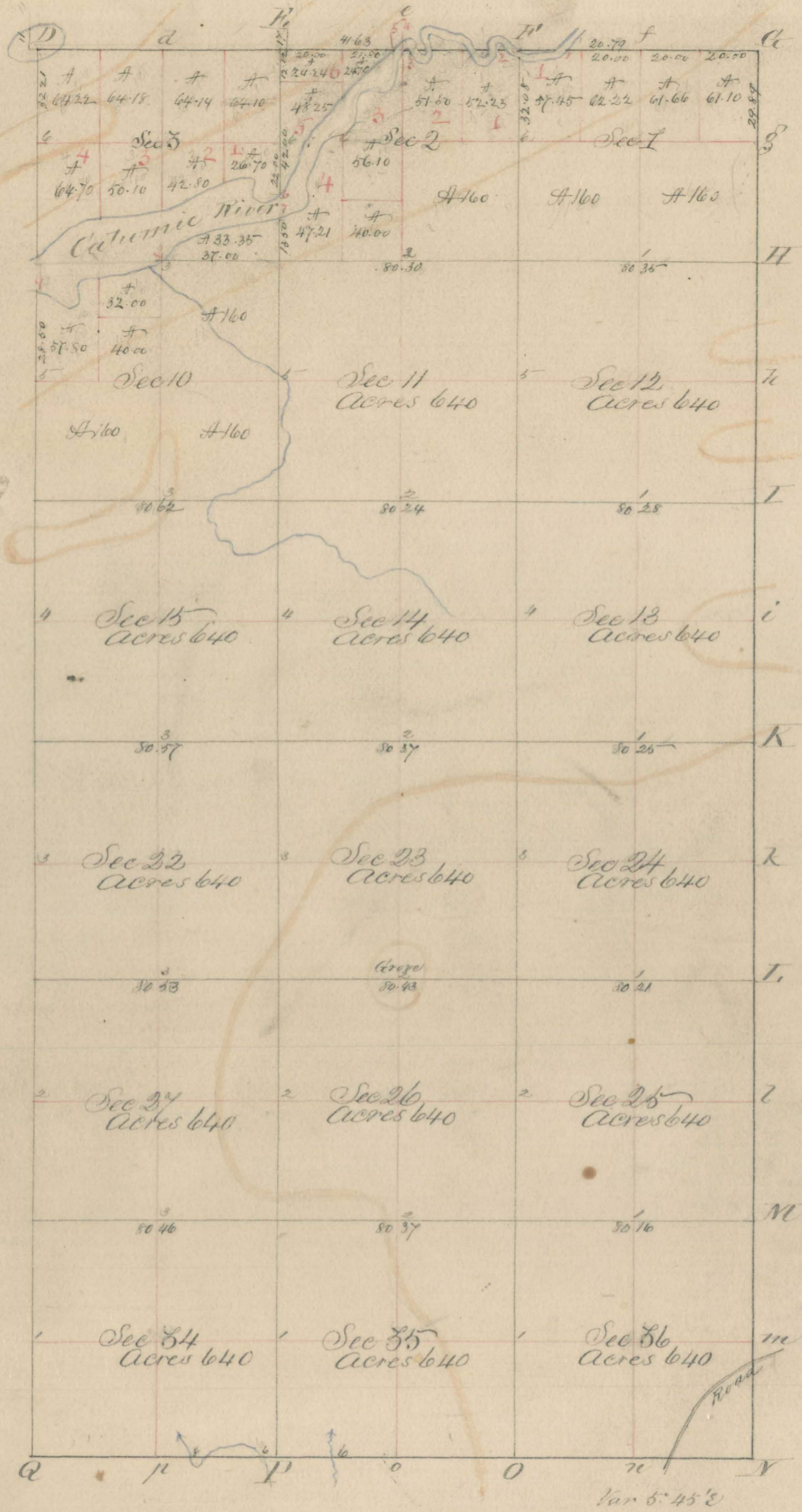
E. Henderson,
 Auditor of State.



East half Town 36 Range 1



Scanned From Records of
Porter County Surveyor's Office
 155 Indiana Avenue Suite 303 Valparaiso, IN 46383
 Phone (219) 465-3560
Kevin D. Breitzke, P.E., L.S. - Porter County Surveyor
 Copyright © 2012 Porter County, IN. All Rights Reserved.
 Disclaimer: The information of this drawing is believed to be reliable, but no representations, guarantees or warranties of any kind are made as to its accuracy, currency, revision, or suitability for particular applications.



1834
 Surveyed in 1834 by Andrew Burriside Dep't Sur Var 7° E. Scale one inch to 40 Chains

State of Indiana;
 Office of Auditor of State,

I, Henderson, Auditor of State of the State of Indiana, here by Certify that I have Compared the above Plat with the original Township Plat of the Records of Survey of United States lands of Indiana, and find the same a true copy of the east half of said original.

Given under my hand and official seal at Indianapolis this March 18th A.D. 1895.

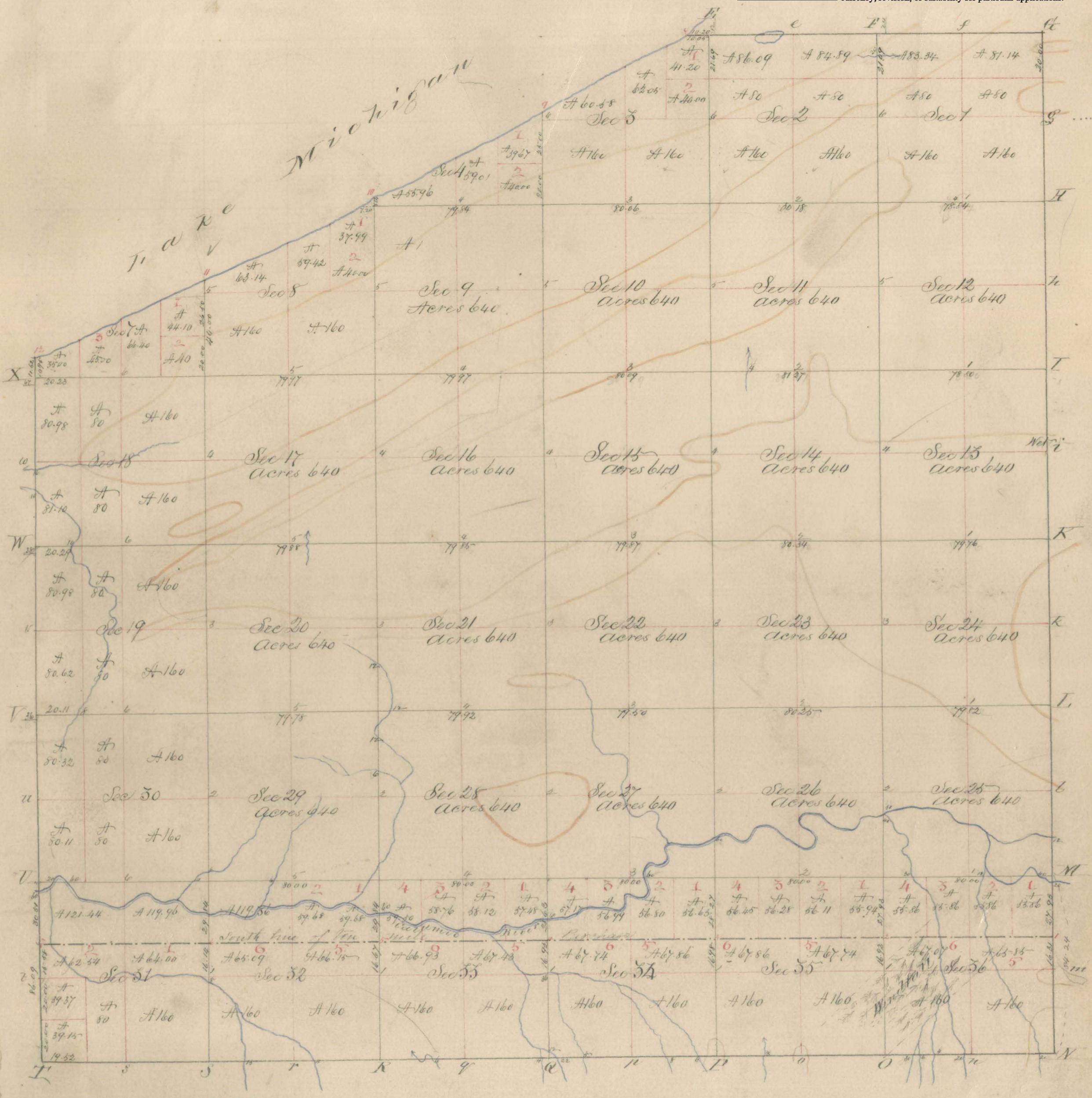
E. Henderson,
 Auditor of State.



Town 51 Range 5



Scanned From Records of
 Porter County Surveyor's Office
 155 Indiana Avenue Suite 303 Valparaiso, IN 46383
 Phone (219) 465-3560
 Kevin D. Breitzke, P.E., L.S. - Porter County Surveyor
 Copyright © 2012 Porter County, IN. All Rights Reserved.
 Disclaimer: The information of this drawing is believed to be reliable, but no representations, guarantees or warranties of any kind are made as to its accuracy, currency, revision, or suitability for particular applications.



North of Boundary Surveyed in 1830 by Calvin Britain kept Sur. Var 5 35' Scale one inch to 100 Chains
 South " " " " " 1834 " William Clark " " "

State of Indiana,
 Office of Auditor of State,

J. E. Henderson Auditor of State of the State of Indiana,
 hereby Certify, that I have compared the above Plat
 with the original Township Plat, of the Records of surveys
 of United States lands of Indiana, and find the same
 a true Copy.

Given under my hand and official
 seal at Indianapolis, this March
 18th A.D. 1875.

E. Henderson,
 Auditor of State.





Scanned From Records of
Porter County Surveyor's Office
 155 Indiana Avenue Suite 303 Valparaiso, IN 46383
 Phone (219) 465-3560
Kevin D. Breitzke, P.E., L.S. - Porter County Surveyor
 Copyright © 2012 Porter County, IN. All Rights Reserved.
 Disclaimer: The information of this drawing is believed to be reliable, but no representations, guarantees or warranties of any kind are made as to its accuracy, currency, revision, or suitability for particular applications.

Town 37 Range 6



Surveyed in 1830 by Cathie Britain Capt. Sur.
 " " 1834 " Andrew Burnside " "

Var 5 1/2' West one inch to 40 chains



State of Indiana:

Office of Auditor of State,

I, E. Henderson Auditor of State of the State of Indiana, hereby Certify that I have compared the above Plat with the original Township Plat of the Records of Surveys of United States lands of Indiana, and find the same a true copy. Given under my hand and official seal at Indianapolis, this 24th day of March, A.D. 1895.

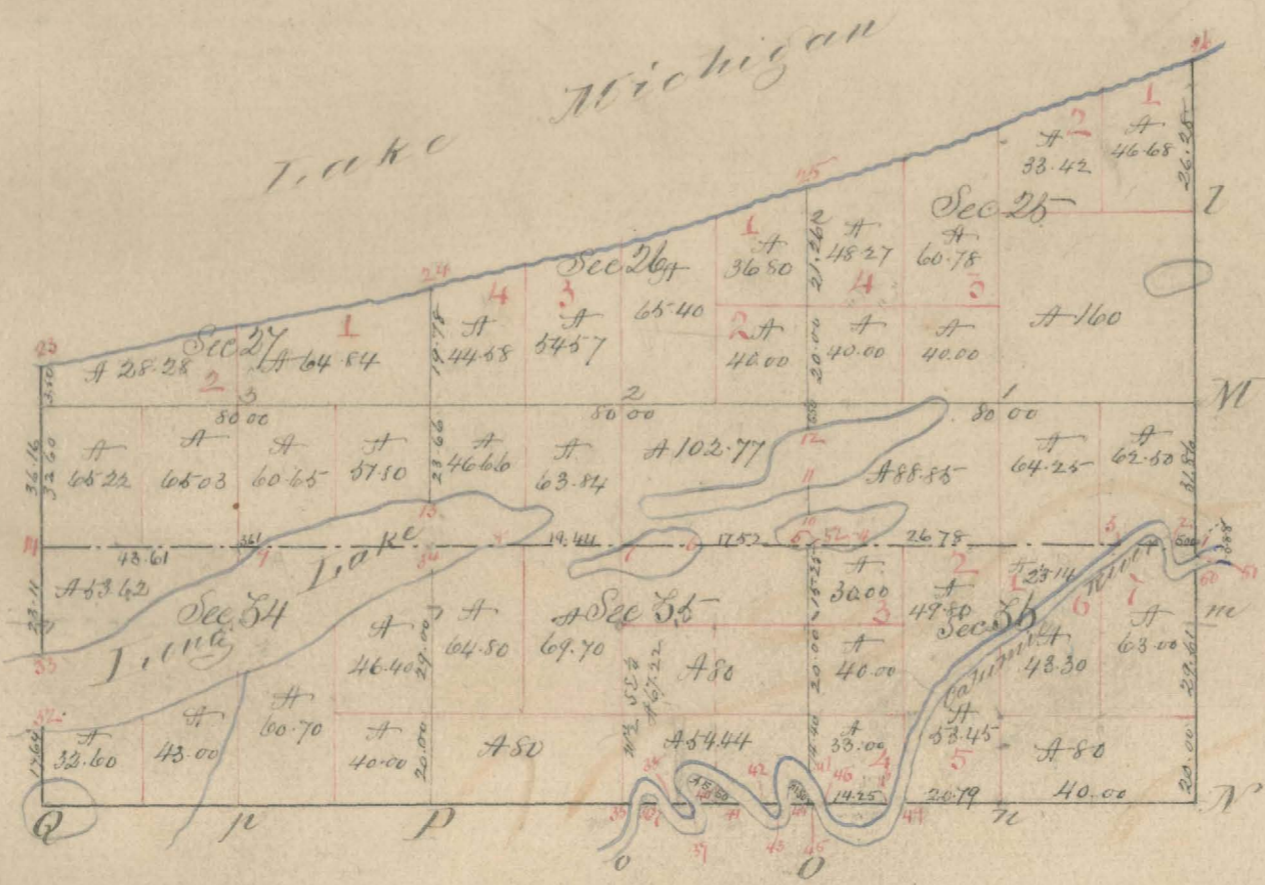
E. Henderson
 Auditor of State



Scanned From Records of
Porter County Surveyor's Office
 155 Indiana Avenue Suite 303 Valparaiso, IN 46383
 Phone (219) 465-3560
 Kevin D. Breitzke, P.E., L.S. - Porter County Surveyor

Copyright © 2012 Porter County, IN. All Rights Reserved.
 Disclaimer: The information of this drawing is believed to be reliable, but no representations, guarantees or warranties of any kind are made as to its accuracy, currency, revision, or suitability for particular applications.

East half Town of Range 7



Surveyed in 1850 by Calvin Britain Cap. Sur.
 " 1854 " Andrew Burnside

Var 5.40 E. Scale 1 inch to 40 chains

State of Indiana;
 Office of Auditor of State,

I, E. Henderson, Auditor of State of the State of Indiana,
 hereby Certify that I have compared the above Plat
 with the original Township Plat of the Records of Surveys
 of United States lands of Indiana, and find the same
 a true copy of the east half of the said original.

Given under my hand and
 official seal at Indianapolis,
 this 9th March 18th A.D. 1895.

E. Henderson,
 Auditor of State

