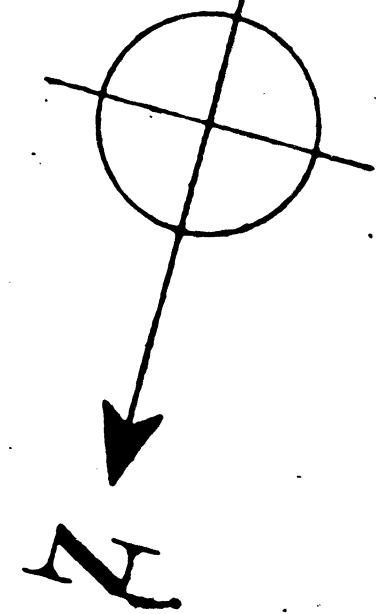


REVISION	REFERENCE	DATE PLOTTED	A.F.E.	BY
1. Tol. and Correc. Repro. B. 11/11/50	V. 6	11-2-50		

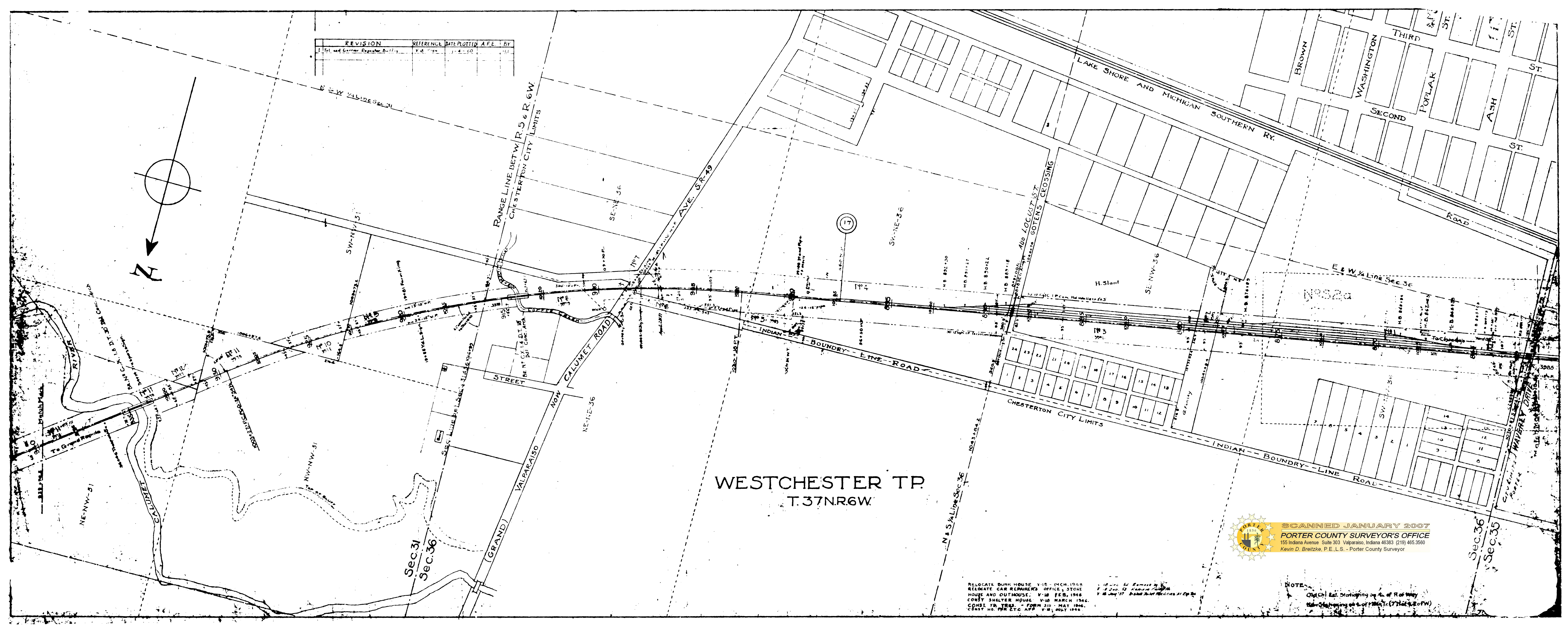


WESTCHESTER TP.  
T. 37N. R. 6W.

SCANNED JANUARY 2007  
 PORTER COUNTY SURVEYOR'S OFFICE  
 155 Indiana Avenue, Suite 303 Valparaiso, Indiana 46383 (219) 465.3560  
 Kevin D. Breitzke, P.E., L.S. - Porter County Surveyor

RELOCATE BURN HOUSE V-10 - MCH 1948  
 RELOCATE CAR REPAIRERS OFFICE, STONE  
 HOUSE AND OUTHOUSE V-10 FEB. 1948  
 CONST. SHELTER HOUSE V-10 MARCH 1946  
 CONST. YR. TREE - FORM III - MAY 1946  
 CONST. NO. FOR ETC. APP. V-10 JULY 1946

NOTE:  
 Old Ch. Est. Stationing on E. of R. 65 West  
 New Stationing on E. of R. 65 West (T. 37N. R. 6W.)





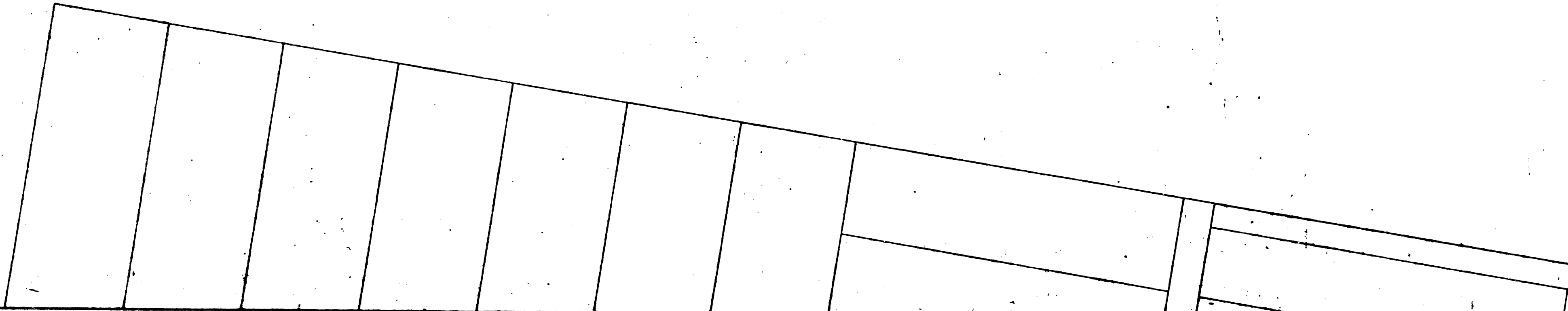
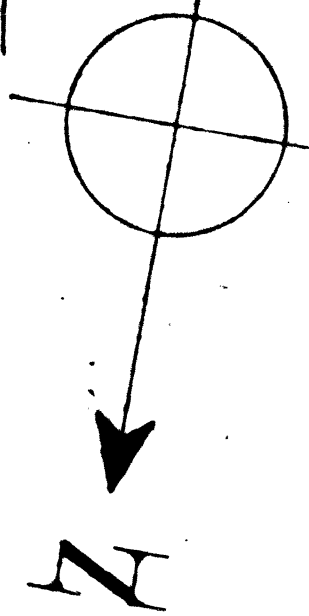
E & W 1/4 Line Sec. 36

To Grand Rapids

To Chicago

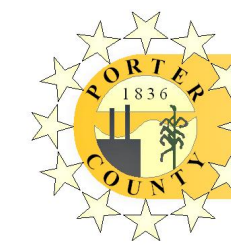
Property Listed on sheets 18 & 7

REVISION	REFERENCE DATE	DATE	BY
1. Tol. and Garage Remodeling Building	11/18/59	1-4-60	HCL



Sec. 36

Sec. 35



SCANNED JANUARY 2007  
 PORTER COUNTY SURVEYOR'S OFFICE  
 155 Indiana Avenue Suite 303 Valparaiso, Indiana 46383 (219) 465.3560  
 Kevin D. Breitzke, P.E., L.S. - Porter County Surveyor

PORTER


RELOCATE BUNK HOUSE - V.16 - 3-1948  
 RELOCATE CAR REPAIRERS OFF. STORE ROOM AND OUTHOUSE - V.18 - FEB. 1946  
 CONST. YD. TRMS. FORM 3111 - MAY 1944  
 V.18 JULY 57 INSTALL TOILET FACILITIES AT RP 7EX.

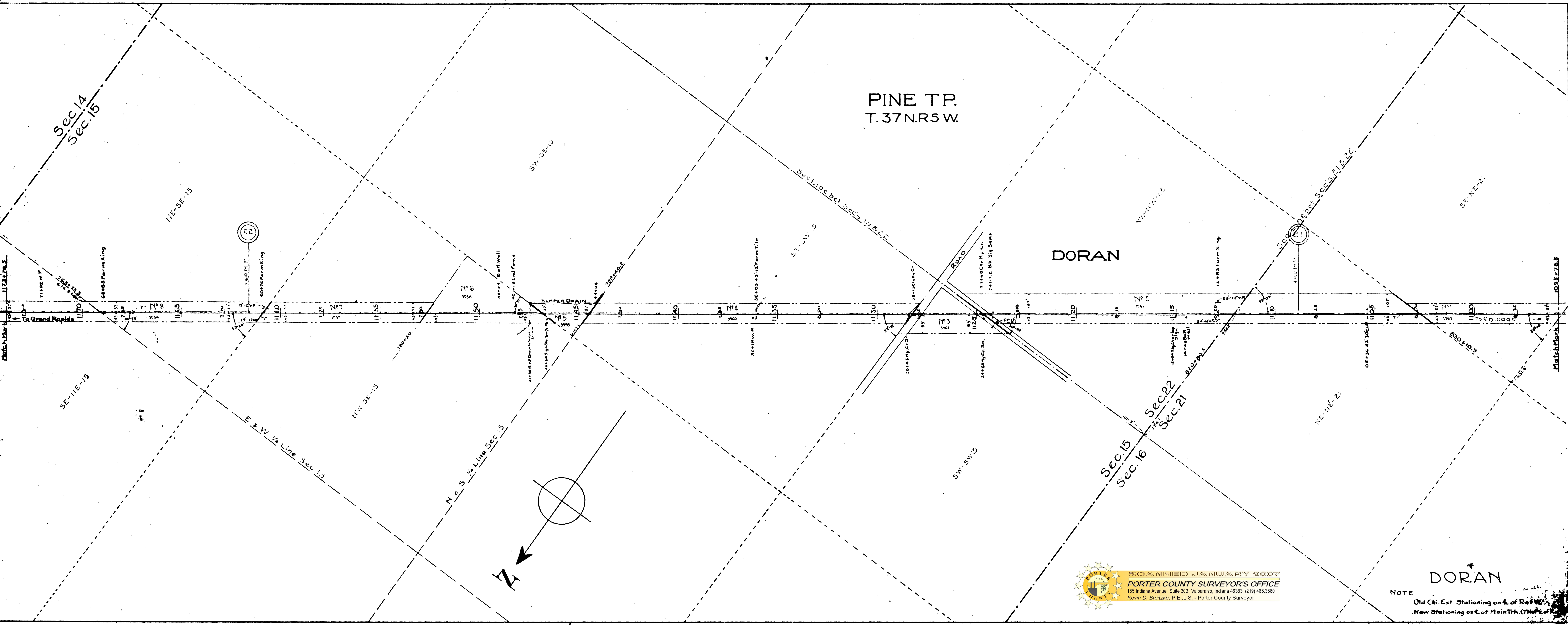
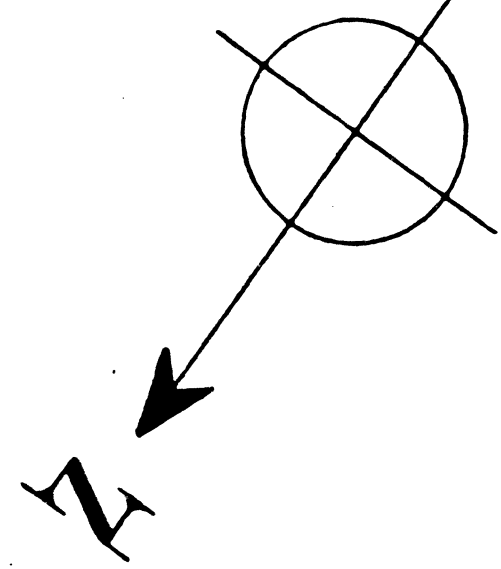
PINE TR.  
T. 37 N. R. 5 W.

DORAN

DORAN

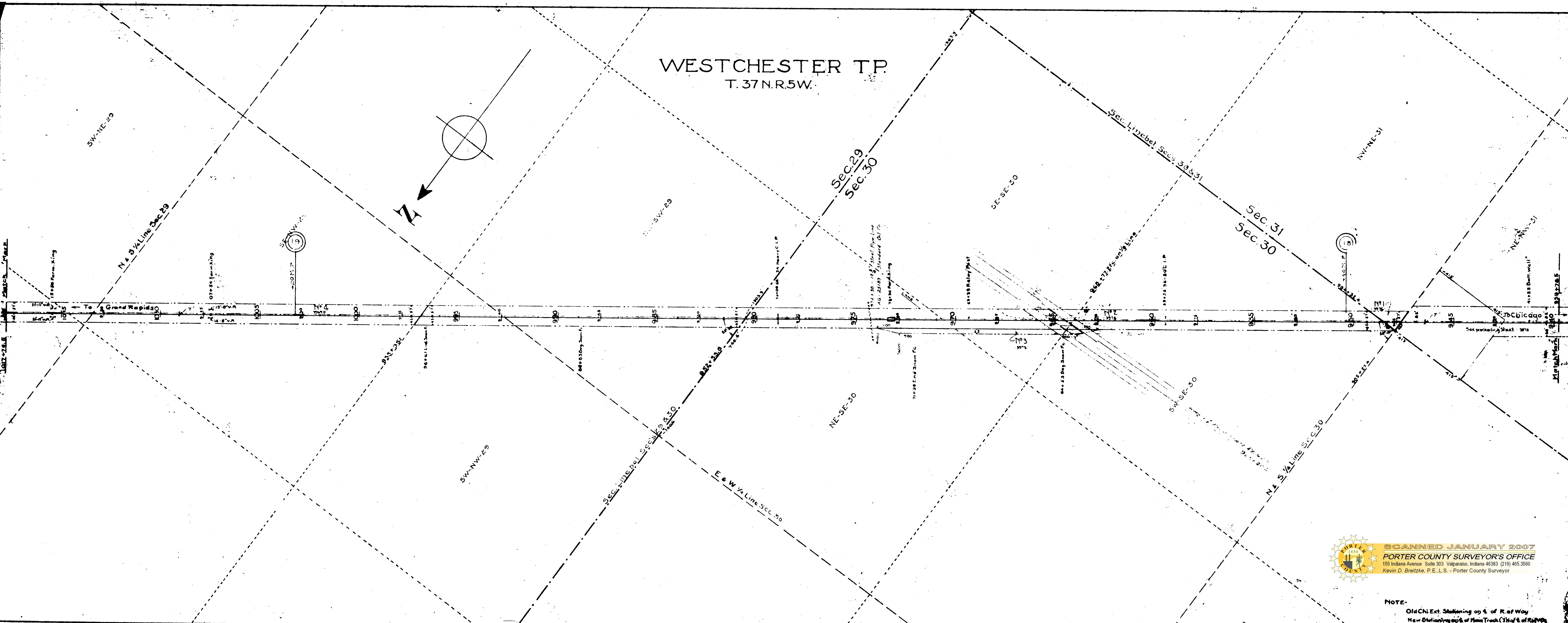
NOTE  
Old Chi. Ext. Stationing on L of R  
New Stationing on L of Main Trk. (7) N of R

SCANNED JANUARY 2007  

**PORTER COUNTY SURVEYOR'S OFFICE**  
 155 Indiana Avenue Suite 303 Valparaiso, Indiana 46383 (219) 465.3560  
 Kevin D. Bretzke, P.E., L.S. - Porter County Surveyor





WESTCHESTER TP.  
T. 37 N. R. 5 W.



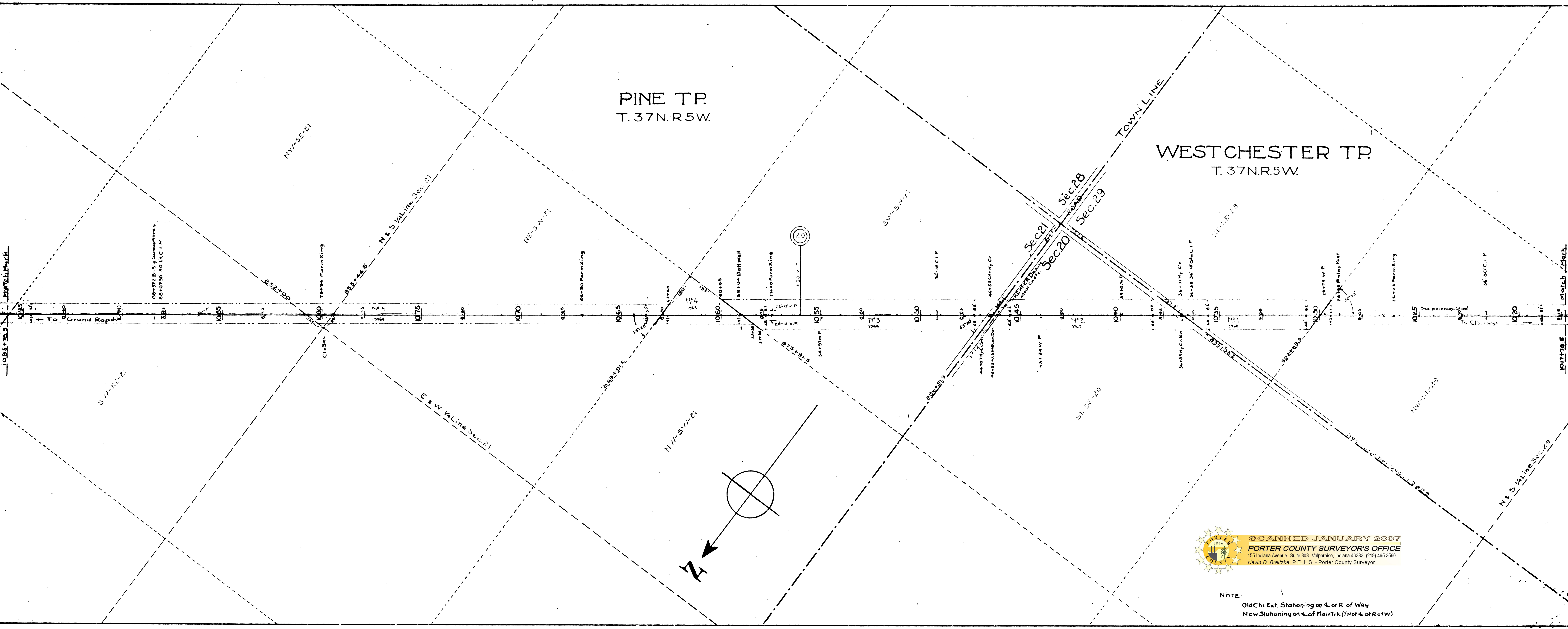
SCANNED JANUARY 2007  
PORTER COUNTY SURVEYOR'S OFFICE  
155 Indiana Avenue, Suite 303 Valparaiso, Indiana 46383 (219) 465-3560  
Kevin D. Breitzke, P.E., L.S. - Porter County Surveyor

NOTE-  
Old Ch. Est. Stationing on E. of R. of Way  
New Stationing on E. of Main Track (1/4 of R. of Way)

PINE TR.  
T. 37N. R. 5W.

WESTCHESTER TR.  
T. 37N. R. 5W.

TOWN LINE

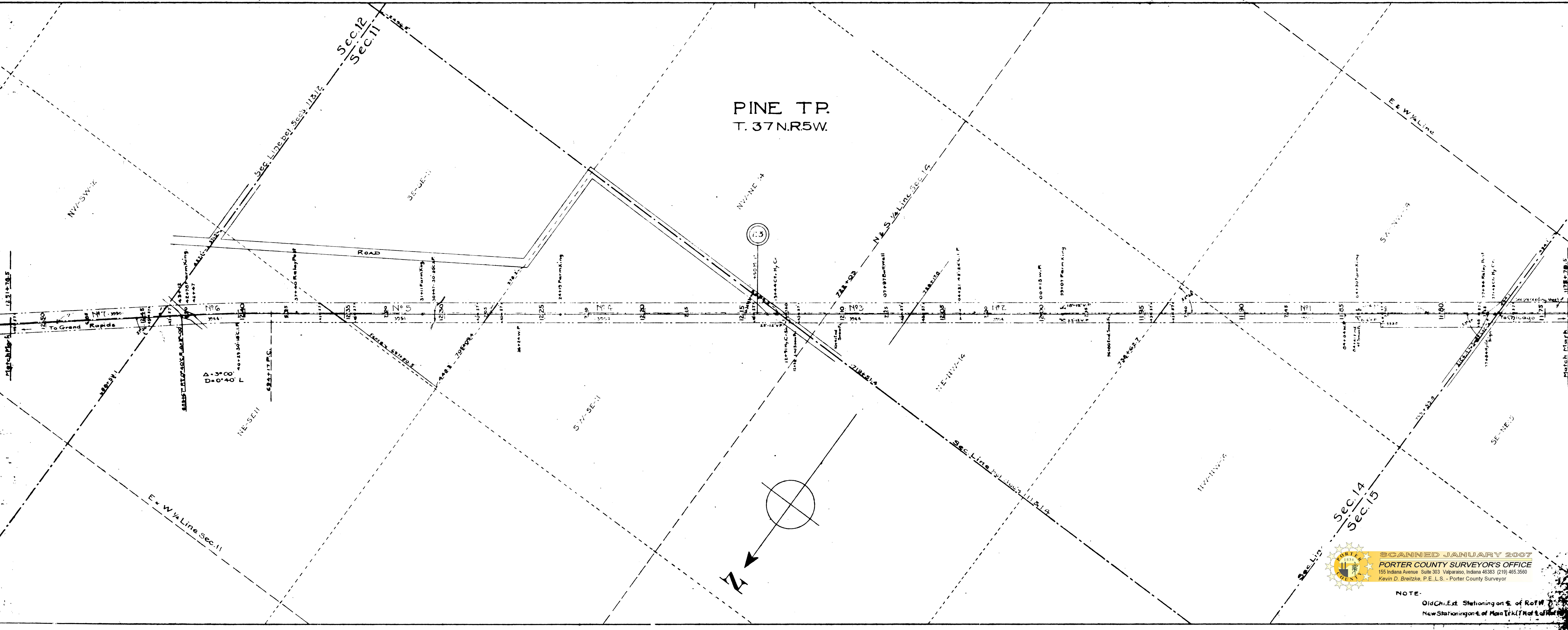


SCANNED JANUARY 2007  
PORTER COUNTY SURVEYOR'S OFFICE  
155 Indiana Avenue, Suite 303, Valparaiso, Indiana 46383 (219) 465-3560  
Kevin D. Breitzke, P.E., L.S. - Porter County Surveyor

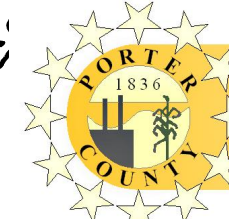
NOTE:  
Old Chi. Ext. Stationing on E. of R of Way  
New Stationing on E. of Main Trk. (7' offset of R of W)



PINE TR.  
T. 37N.R5W.



Δ = 3° 00'  
D = 0° 40' L



SCANNED JANUARY 2007  
PORTER COUNTY SURVEYOR'S OFFICE  
155 Indiana Avenue, Suite 303, Valparaiso, Indiana 46383 (219) 465-3500  
Kevin D. Breitzke, P.E., L.S. - Porter County Surveyor

NOTE:  
Old Ch. Ext. Stationing on E. of R of W  
New Stationing on E. of Main Trk. (North of R of W)












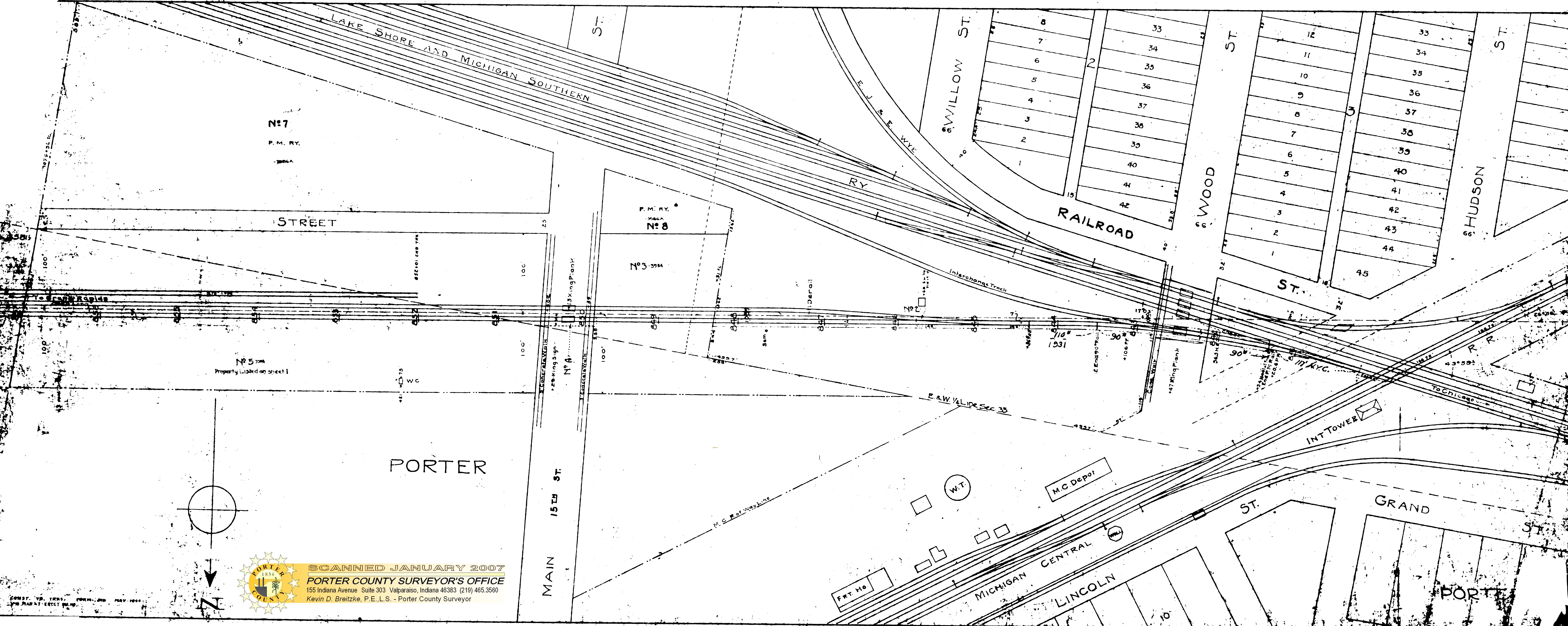





**SCANNED JANUARY 2007**  
**PORTER COUNTY SURVEYOR'S OFFICE**  
 155 Indiana Avenue Suite 303 Valparaiso, Indiana 46383 (219) 465.3560  
 Kevin D. Breitzke, P.E., L.S. - Porter County Surveyor

**ELGIN JOLIET & EASTERN RY. CO.**  
 CHIEF ENGINEERS OFFICE JOLIET, ILL.  
**YARD PLAT**  
**OF**  
**PORTER, IND.**  
 DRAWN BY J. D. W.  
 IN CHARGE J. T. W.  
 FILE NO. 611-35  
 SCALE 1" = 100'  
 SEPT. 25, 1923





N<sup>o</sup> 7

P.M. RY.

386A

STREET

P.M. RY.

386A

N<sup>o</sup> 8

N<sup>o</sup> 3-394

N<sup>o</sup> 5

Property Listed on sheet 1

N<sup>o</sup> 4

PORTER

MAIN 15TH ST.

M.C. Depot

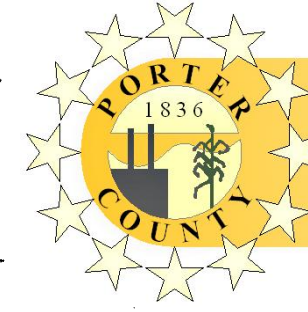
INT. TOWER

GRAND ST.

MICHIGAN CENTRAL

LINCOLN ST.

PORTER



SCANNED JANUARY 2007  
**PORTER COUNTY SURVEYOR'S OFFICE**  
 155 Indiana Avenue Suite 303 Valparaiso, Indiana 46383 (219) 465.3560  
 Kevin D. Breitzke, P.E., L.S. - Porter County Surveyor

CONST. VS. TRNS. FORM. 2ND MAY 1966  
 170 PLAN 27 - RECT. 90.10