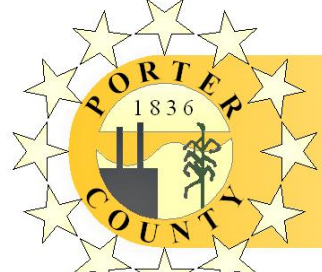


Match Mark for Next Sheet

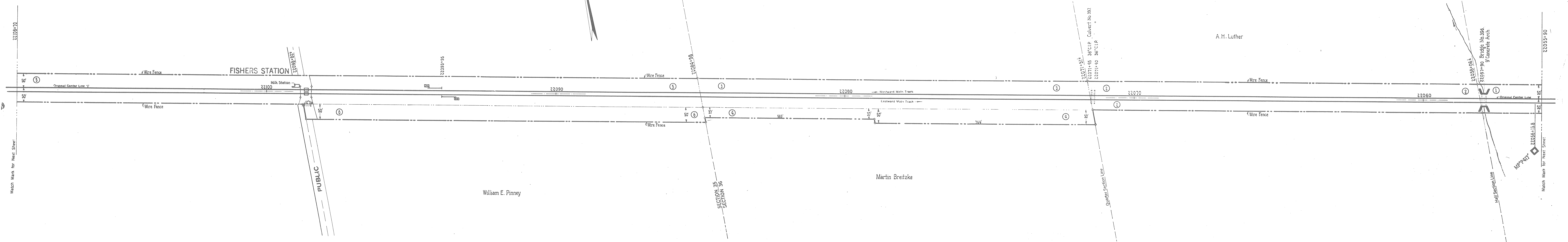
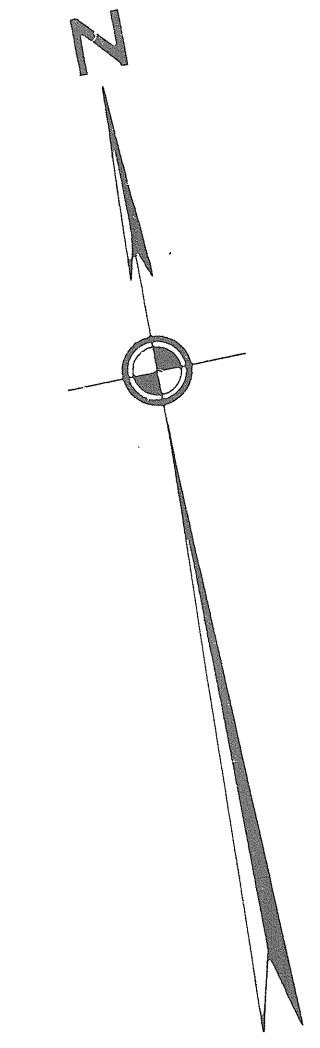
Match Mark for Next Sheet

Correct as of June 30th 192
Correct as of June 30th 192
Correct as of June 30th 1922. No Revision.
Correct as of June 30th 1921. No Revision.
Correct as of June 30th 1920. No Revision.
Correct as of June 30th 1919. No Revision.
Correct as of June 30th 1918. No Revision.
Correct as of June 30th 1917. No Revision.


SCANNED JANUARY 2007
PORTER COUNTY SURVEYOR'S OFFICE
 155 Indiana Avenue Suite 303 Valparaiso, Indiana 46383 (219) 465.3560
 Kevin D. Breitzke, P.E., L.S. - Porter County Surveyor

Sheet No. 93 V. 3 Indians, of Pittsburgh, Fort Wayne and Chicago Railway
 from Survey Station 22003+10 to Survey Station 22055+90.
 Chief Draftsman.

RIGHT OF WAY AND TRACK MAP
PITTSBURGH, FORT WAYNE AND CHICAGO RAILWAY
 OPERATED BY
PENNSYLVANIA COMPANY
WESTERN DIVISION
 STATION 22003+10 TO STATION 22055+90
 SCALE: 1 IN. = 100 FT. JUNE 30, 1919
 OFFICE OF VALUATION ENGINEER
 PITTSBURGH, PA.



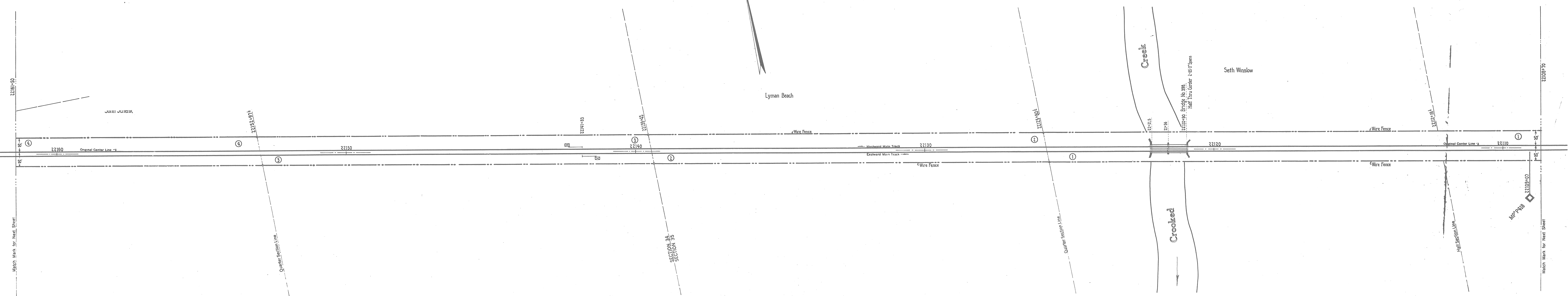
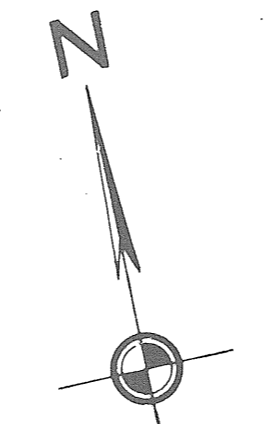
Correct as of June 30th 192.	
Correct as of June 30th 192.	
Correct as of June 30th 1921.	No Revision.
Correct as of June 30th 1921.	No Revision.
Correct as of June 30th 1920.	No Revision.
Correct as of June 30th 1919.	No Revision.
Correct as of June 30th 1918.	No Revision.
Correct as of June 30th 1917.	No Revision.

SCANNED JANUARY 2007
PORTER COUNTY SURVEYOR'S OFFICE
 155 Indiana Avenue Suite 303 Valparaiso, Indiana 46383 (219) 465-3560
 Kevin D. Breitzke, P.E., L.S. - Porter County Surveyor

Sheet No. 97 V. 3 Indjans, of Pittsburgh, Fort Wayne and Chicago Railway
 from Survey Station 22055+90 to Survey Station 22108+70.
 Chief Draftsman.

RIGHT OF WAY AND TRACK MAP
PITTSBURGH, FORT WAYNE AND CHICAGO RAILWAY
 OPERATED BY
PENNSYLVANIA COMPANY
 WESTERN DIVISION
 STATION 22055+90 TO STATION 22108+70
 SCALE: 1 IN. = 100 FT. JUNE 30, 1918
 OFFICE OF VALUATION ENGINEER
 PITTSBURGH, PA.

PORTER COUNTY, INDIANA
 WASHINGTON TOWNSHIP
 T. 35 N., R. 5 W.



Correct as of June 30th 192
Correct as of June 30th 192
Correct as of June 30th 1921. No Revision.
Correct as of June 30th 1921. No Revision.
Correct as of June 30th 1920. No Revision.
Correct as of June 30th 1919. No Revision.
Correct as of June 30th 1918. No Revision.
Correct as of June 30th 1917. No Revision.

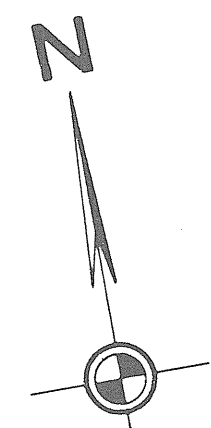
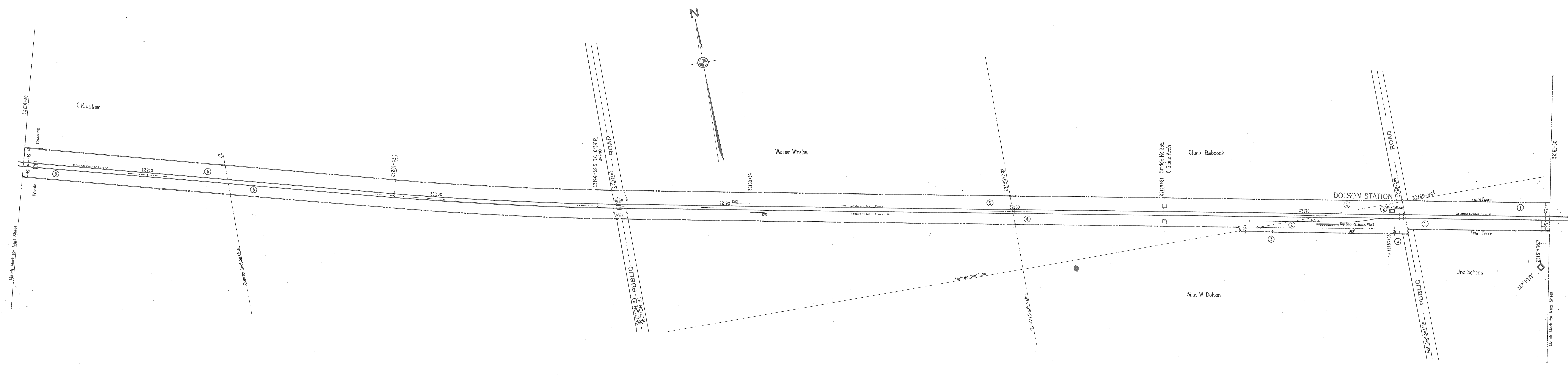
SCANNED JANUARY 2007

PORTER COUNTY SURVEYOR'S OFFICE
 155 Indiana Avenue Suite 303 Valparaiso, Indiana 46383 (219) 465 3580
 Kevin D. Breitzke, P.E., L.S. - Porter County Surveyor

Sheet No. 96 V. 3 Indiana, of Pittsburgh, Fort Wayne and Chicago Railway
 from Survey Station 22108+70 to Survey Station 22161+50
 Chief Draftsman

RIGHT OF WAY AND TRACK MAP
 PITTSBURGH, FORT WAYNE AND CHICAGO RAILWAY
 OPERATED BY
PENNSYLVANIA COMPANY
 WESTERN DIVISION
 STATION 22108+70 TO STATION 22161+50
 SCALE: 1 IN. = 100 FT. JUNE 30, 1916
 OFFICE OF VALUATION ENGINEER
 PITTSBURGH, PA.

PORTER COUNTY, INDIANA
 WASHINGTON TOWNSHIP
 T. 35 N., R. 5 W.



SCHEDULE OF SIDINGS AND CROSSOVERS

Side Trk Number	Location	Class	Length June 30-18	R R Co	Private	Total	Remarks
6	Washington Township	B	483			483	

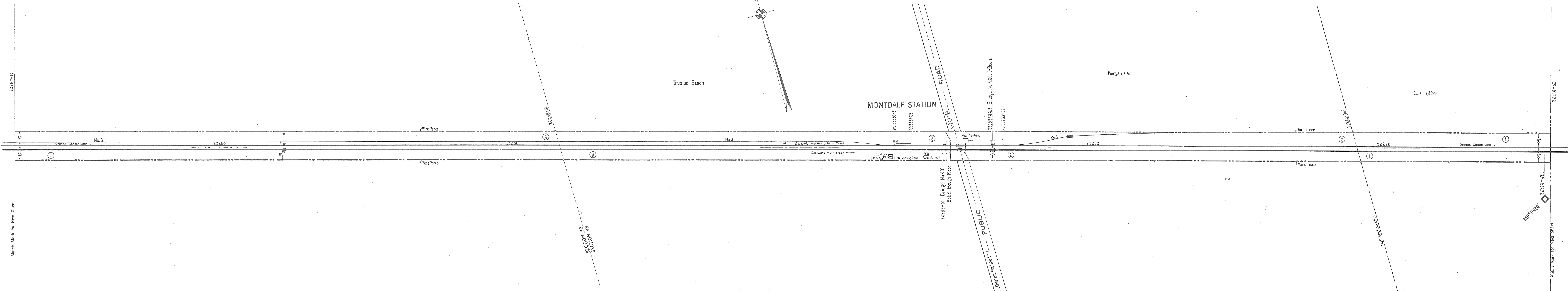
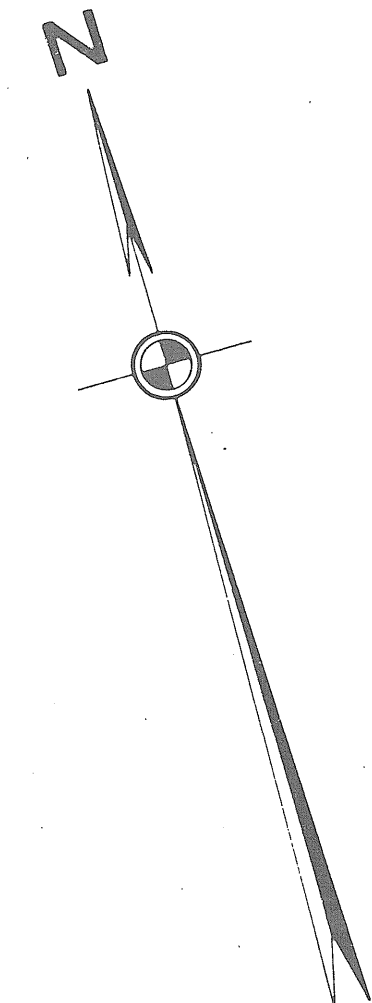
Correct as of June 30th 192
Correct as of June 30th 192
Correct as of June 30th 1921 No Revision
Correct as of June 30th 1921 No Revision
Correct as of June 30th 1920 No Revision
Correct as of June 30th 1919 No Revision
Correct as of June 30th 1918 No Revision
Correct as of June 30th 1917 No Revision

SCANNED JANUARY 2007
PORTER COUNTY SURVEYOR'S OFFICE
 155 Indiana Avenue Suite 303 Valparaiso, Indiana 46383 (219) 465-3560
 Kevin D. Breitzke, P.E., L.S. - Porter County Surveyor

Sheet No. 99 V. 3 Indiana, of Pittsburgh, Fort Wayne and Chicago Railway
 from Survey Station 22161+50 to Survey Station 22214+30.
 Chief Draftsman.

RIGHT OF WAY AND TRACK MAP
 PITTSBURGH, FORT WAYNE AND CHICAGO RAILWAY
 OPERATED BY
PENNSYLVANIA COMPANY,
 WESTERN DIVISION
 STATION 22161+50 TO STATION 22214+30
 SCALE: 1 IN. = 100 FT. JUNE 30, 1916
 OFFICE OF VALUATION ENGINEER
 PITTSBURGH, PA.

PORTER COUNTY, INDIANA
 WASHINGTON TOWNSHIP
 T. 35 N., R. 5 E.



SCHEDULE OF SIDINGS AND CROSSOVERS

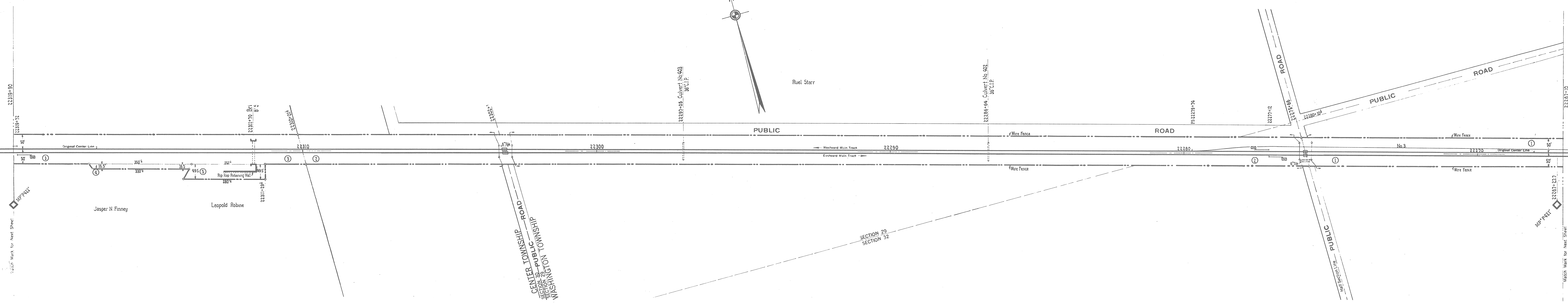
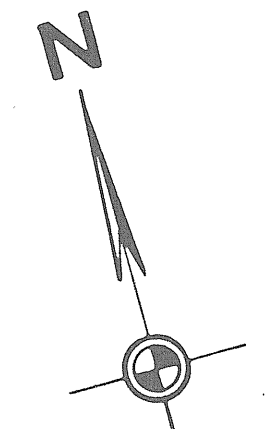
Side Track Number	Location	Class	Length June 30-16	Total	Remarks
1	Washington Township	B	525	525	
2		S	4255	4255	

Correct as of June 30th 192.
 Correct as of June 30th 192.
 Correct as of June 30th 1922. No Revision.
 Correct as of June 30th 1921. No Revision.
 Correct as of June 30th 1920. No Revision.
 Correct as of June 30th 1919. No Revision.
 Correct as of June 30th 1918. No Revision.
 Correct as of June 30th 1917. No Revision.

SCANNED JANUARY 2007
PORTER COUNTY SURVEYOR'S OFFICE
 155 Indiana Avenue Suite 303 Valparaiso, Indiana 46383 (219) 465.3560
 Kevin D. Bretzke, P.E., L.S. - Porter County Surveyor

Sheet No. 100 V. 3 Indiana, of Pittsburgh, Fort Wayne and Chicago Railway
 from Survey Station 22214+30 to Survey Station 22267+10
 Chief Draftsman.

RIGHT OF WAY AND TRACK MAP
 PITTSBURGH, FORT WAYNE AND CHICAGO RAILWAY
 OPERATED BY
PENNSYLVANIA COMPANY
 WESTERN DIVISION
 STATION 22214+30 TO STATION 22267+10
 SCALE: 1 IN. = 100 FT. JUNE 30, 1916
 OFFICE OF VALUATION ENGINEER
 PITTSBURGH, PA.



SCHEDULE OF SIDINGS AND CROSSOVERS
Length June 30, 1916

Side Trk. Number	Location	Class	R. R. Co.	Private	Total	Remarks
5	Washington Township					Listed on Map No. 100.

Correct as of June 30th 192	
Correct as of June 30th 192	
Correct as of June 30th 1921.	No Revision.
Correct as of June 30th 1921.	No Revision.
Correct as of June 30th 1920.	No Revision.
Correct as of June 30th 1919.	No Revision.
Correct as of June 30th 1918.	No Revision.
Correct as of June 30th 1917.	No Revision.

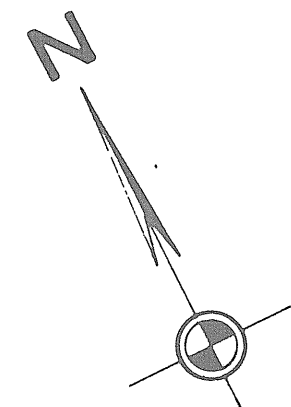
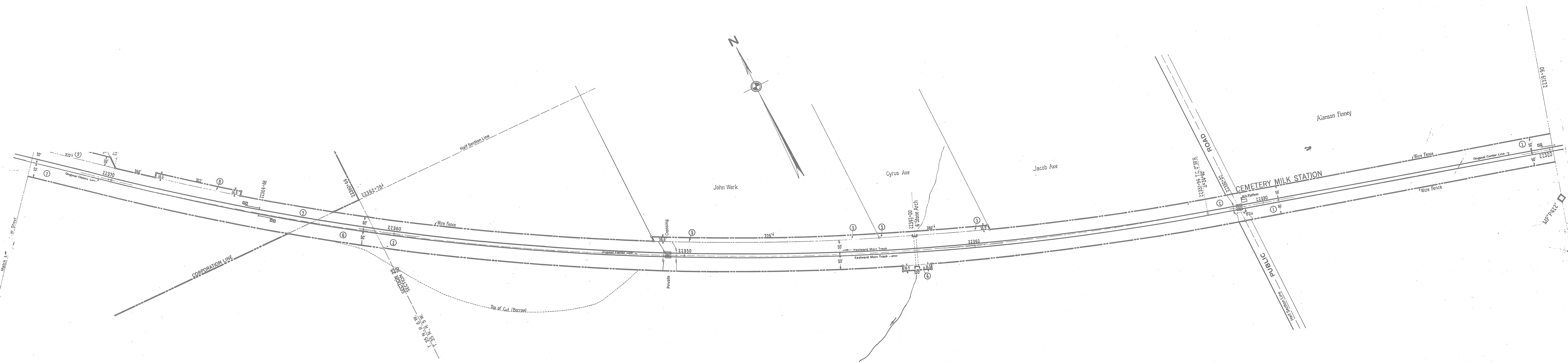
SCANNED JANUARY 2007

PORTER COUNTY SURVEYOR'S OFFICE
 155 Indiana Avenue Suite 303 Valparaiso, Indiana 46383 (219) 465-3560
 Kevin D. Breitzke, P.E., L.S. - Porter County Surveyor


Sheet No. 101 V. 3 Indiana, of Pittsburgh, Fort Wayne and Chicago Railway
 from Survey Station 22267+10 to Survey Station 22319+90
 Chief Draftsman.

RIGHT OF WAY AND TRACK MAP
 PITTSBURGH, FORT WAYNE AND CHICAGO RAILWAY
 OPERATED BY
PENNSYLVANIA COMPANY
 WESTERN DIVISION
 STATION 22267+10 TO STATION 22319+90
 SCALE: 1 IN. = 100 FT. JUNE 30, 1916
 OFFICE OF VALUATION ENGINEER
 PITTSBURGH, PA.

PORTER COUNTY, INDIANA
CENTER TOWNSHIP



Correct as of June 30th 192.	
Correct as of June 30th 192.	
Correct as of June 30th 1921.	No Revision.
Correct as of June 30th 1920.	No Revision.
Correct as of June 30th 1919.	No Revision.
Correct as of June 30th 1918.	No Revision.
Correct as of June 30th 1917.	No Revision.

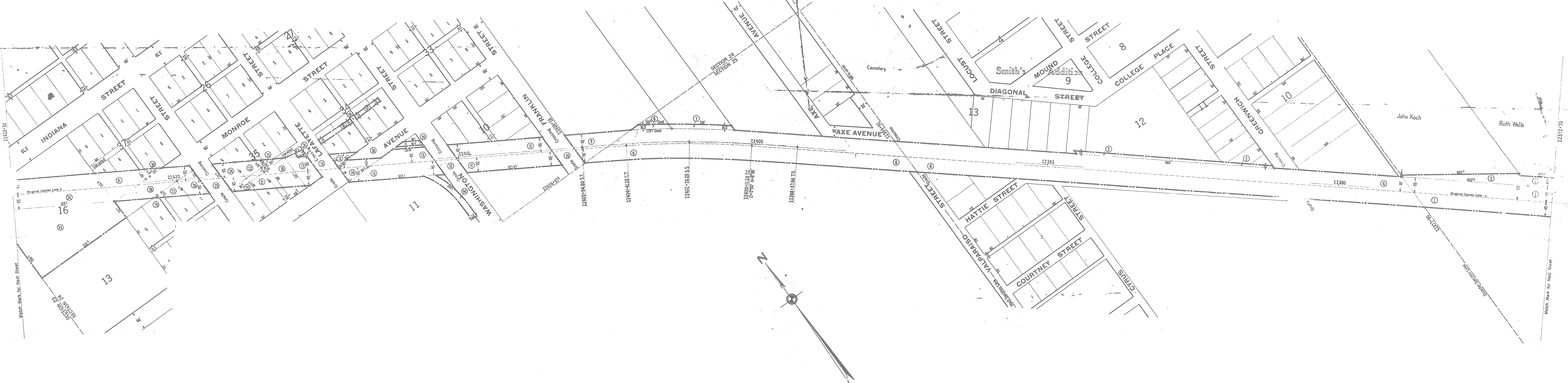

SCANNED JANUARY 2007
PORTER COUNTY SURVEYOR'S OFFICE
 155 Indiana Avenue Suite 303 Valparaiso, Indiana 46383 (219) 465.3560
 Kevin D. Bretzke, P.E., L.S. - Porter County Surveyor

Sheet No. 102 V. 3 Indiana, of Pittsburgh, Fort Wayne and Chicago Railway
from Survey Station 22319+90 to Survey Station 22372+70.
Chief Draftsman.

RIGHT OF WAY AND TRACK MAP
PITTSBURGH, FORT WAYNE AND CHICAGO RAILWAY
 OPERATED BY
PENNSYLVANIA COMPANY
WESTERN DIVISION
 STATION 22319+90 TO STATION 22372+70
 SCALE: 1 IN. = 100 FT. JUNE 30, 1918
 OFFICE OF VALUATION ENGINEER
 PITTSBURGH, PA.

PORTER COUNTY, INDIANA
 CENTER TOWNSHIP
 T. 35 N., R. 6 W.

V A L P A R A I S O



Correct as of June 30th 192.
Correct as of June 30th 192.
Correct as of June 30th 1922. No Revision.
Correct as of June 30th 1921. No Revision.
Correct as of June 30th 1920. No Revision.
Correct as of June 30th 1919. No Revision.
Correct as of June 30th 1918. No Revision.
Correct as of June 30th 1917. No Revision.

SCANNED JANUARY 2007
PORTER COUNTY SURVEYOR'S OFFICE
 155 Indiana Avenue Suite 303 Valparaiso, Indiana 46383 (219) 465.3560
 Kevin D. Bretzke, P.E., L.S. - Porter County Surveyor

Sheet No. S.L. 103 V. 3 Indiana, of Pittsburgh, Fort Wayne and Chicago Railway
 from Survey Station 22372+70 to Survey Station 22425+50.

Chief Draftsman.

STATION MAP LANDS
 PITTSBURGH, FORT WAYNE AND CHICAGO RAILWAY
 OPERATED BY
PENNSYLVANIA COMPANY
 WESTERN DIVISION
 STATION 22372+70 TO STATION 22425+50
 SCALE: 1 IN. = 100 FT. JUNE 30, 1916
 OFFICE OF VALUATION ENGINEER
 PITTSBURGH, PA.

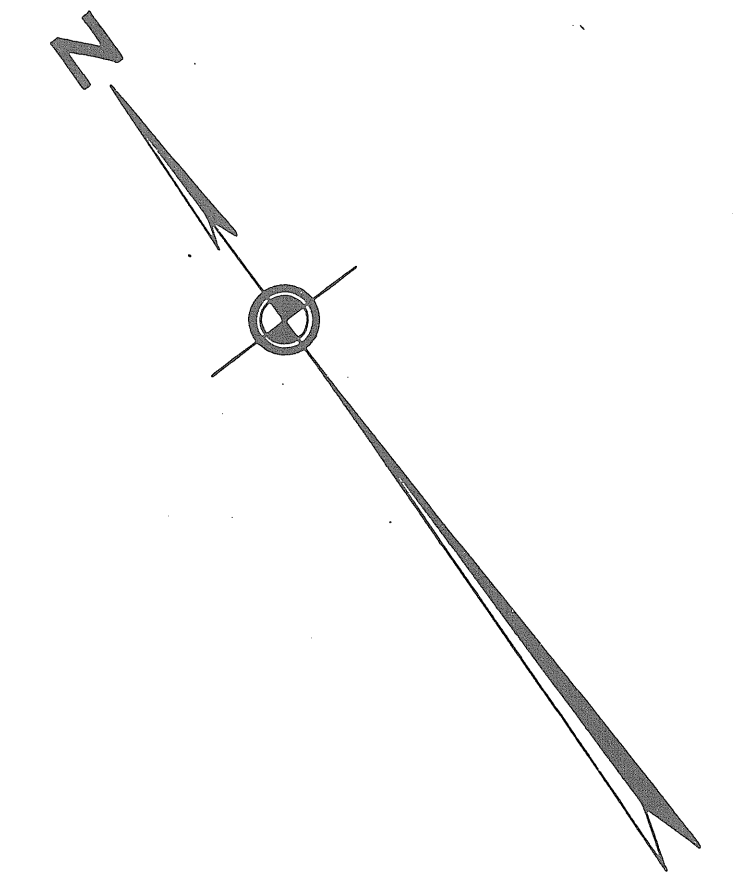
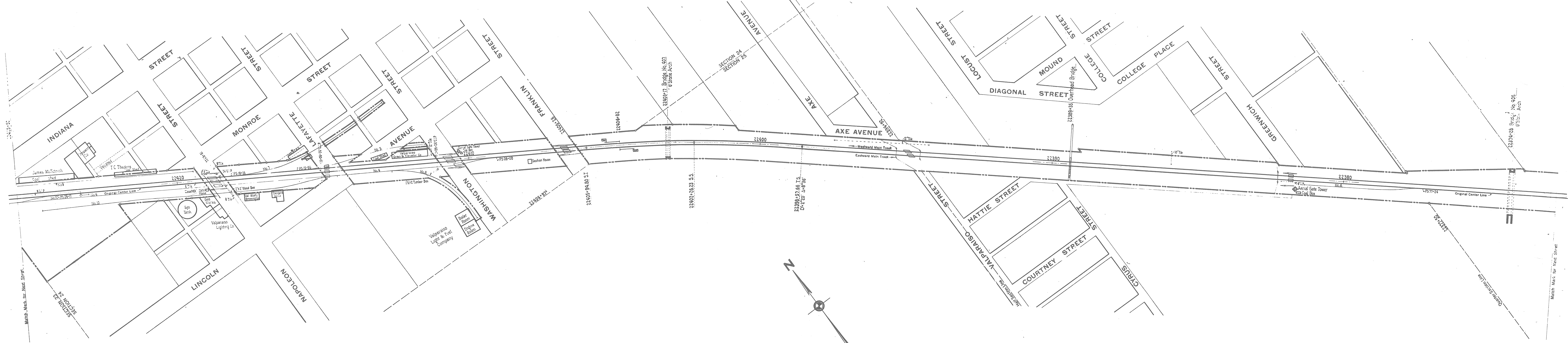


PORTER COUNTY, INDIANA

CENTER TOWNSHIP

T. 35 N., R. 6 W.

V A L P A R A I S O



SCHEDULE OF SIDINGS AND CROSSOVERS

Side Trk Number	Location	Class	Length June 30-19	Private	Total	Remarks
1	Valparaiso Corporation	S	411		411	
2		S	3737		3737	
3		S	394		394	
4		S	1016		1016	
5		S	488		488	
6		S	583		583	
7		S	793		793	
8		S	172		172	

Correct as of June 30th 192
 Correct as of June 30th 192
 Correct as of June 30th 192
 Correct as of June 30th 1921. No Revision.
 Correct as of June 30th 1920. No Revision.
 Correct as of June 30th 1919. No Revision.
 Correct as of June 30th 1918. No Revision.
 Correct as of June 30th 1917. No Revision.

SCANNED JANUARY 2007
PORTER COUNTY SURVEYOR'S OFFICE
 155 Indiana Avenue, Suite 303, Valparaiso, Indiana 46383 (219) 465-3560
 Kevin D. Breitzke, P.E., L.S. - Porter County Surveyor

Sheet No. S.T. 103 V. 3 Indiana, of Pittsburgh, Fort Wayne and Chicago Railway
 from Survey Station 22372+70 to Survey Station 22425+50

Chief Draftsman.

STATION MAP TRACKS AND STRUCTURES
 PITTSBURGH, FORT WAYNE AND CHICAGO RAILWAY
 OPERATED BY

PENNSYLVANIA COMPANY
 WESTERN DIVISION

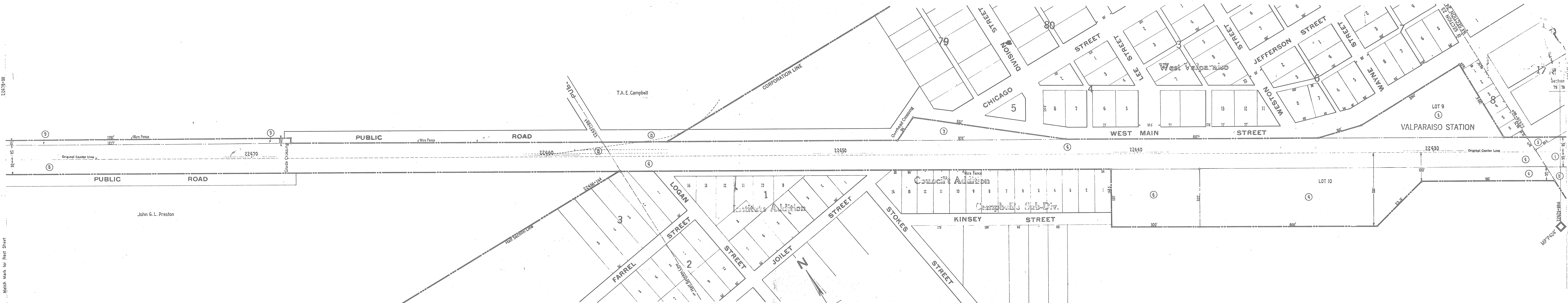
STATION 22372+70 TO STATION 22425+50

SCALE: 1 IN. = 100 FT. JUNE 30, 1916
 OFFICE OF VALUATION ENGINEER
 PITTSBURGH, PA.



PORTER COUNTY, INDIANA
 CENTER TOWNSHIP
 T. 35 N., R. W.

VALPARAISO



Correct as of June 30th 192
Correct as of June 30th 1922
Correct as of June 30th 1921. No Revision.
Correct as of June 30th 1920. No Revision.
Correct as of June 30th 1919. No Revision.
Correct as of June 30th 1918. No Revision.
Correct as of June 30th 1917. No Revision.

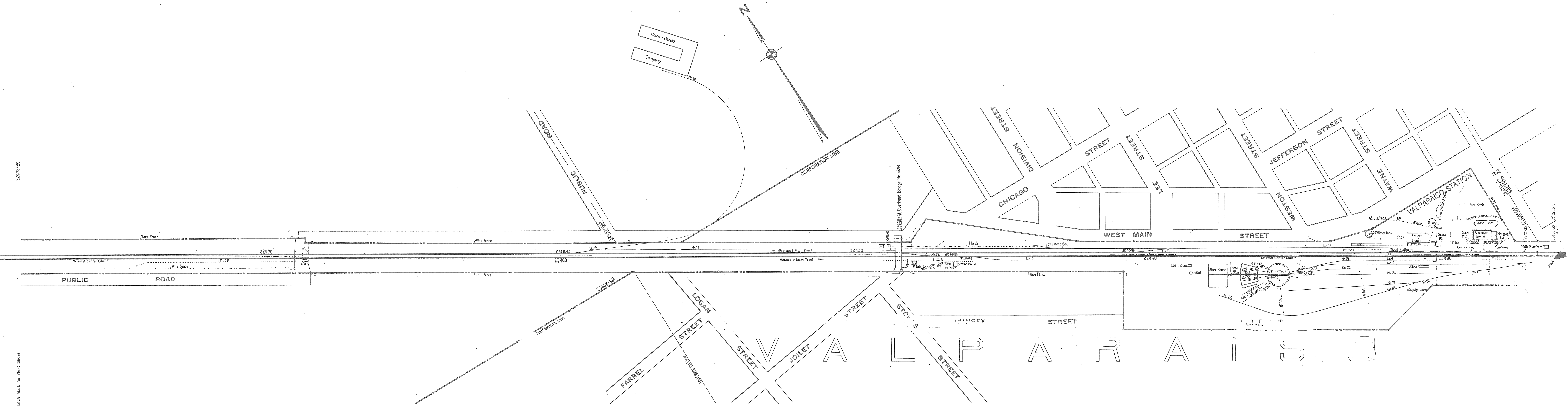
PORTER COUNTY
 SCANNED JANUARY 2007
PORTER COUNTY SURVEYOR'S OFFICE
 155 Indiana Avenue Suite 303 Valparaiso, Indiana 46383 (219) 465-3560
 Kevin D. Breitzke, P.E., L.S. - Porter County Surveyor

Sheet No. S.L. 104 V. 3 Indiana, of Pittsburgh, Fort Wayne and Chicago Railway
 from Survey Station 22425+50 to Survey Station 22478+30.
 Chief Draftsman.

STATION MAP LANDS
 PITTSBURGH, FORT WAYNE AND CHICAGO RAILWAY
 OPERATED BY
PENNSYLVANIA COMPANY
 WESTERN DIVISION
 STATION 22425+50 TO STATION 22478+30
 SCALE: 1 IN. = 100 FT. JUNE 30, 1919
 OFFICE OF VALUATION ENGINEER
 PITTSBURGH, PA.



PORTER COUNTY, INDIANA
 CENTER TOWNSHIP
 T. 35 N., R. 6 W.



22478-30

Match Mark for Next Sheet

SCHEDULE OF SIDINGS AND CROSSOVERS
 Length June 30, 1917

Location	Class	R.R. Co.	Private	Total	Remarks
Valparaiso Corporation	Y			938	Listed on Map No. 51, 105
	Y			755	
	Y			628	
	Y			756	
	D			2390	
	Y			293	
	Y			282	Includes 76' across turntable
	Y			215	
	Y			620	
	Y			197	
	Y			133	Radial Tracks at turntable
	Y			206	
Center Township	ms		937	1256	

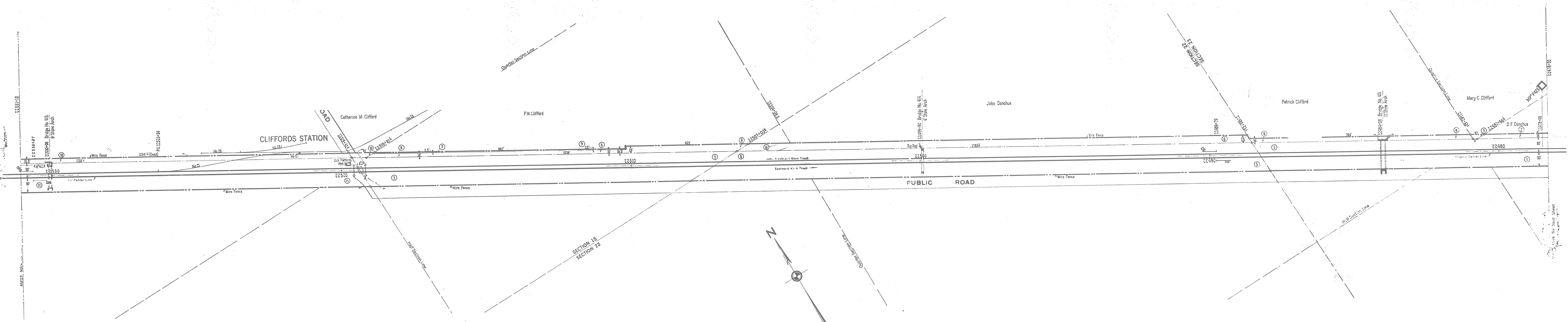
Correct as of June 30th 192
 Correct as of June 30th 192
 Correct as of June 30th 192
 Correct as of June 30th 192
 Correct as of June 30th 1919. No Revision.
 Correct as of June 30th 1918. No Revision.
 Correct as of June 30th 1917. No Revision.

SCANNED JANUARY 2007
PORTER COUNTY SURVEYOR'S OFFICE
 155 Indiana Avenue Suite 303 Valparaiso, Indiana 46383 (219) 465 3560
 Kevin D. Breitzke, P.E., L.S. - Porter County Surveyor

Sheet No. S.T. 104 V. 3 Indiana, of Pittsburgh, Fort Wayne and Chicago Railway
 from Survey Station 22425+50 to Survey Station 22478+30
 Chief Draftsman.

STATION MAP TRACKS AND STRUCTURES
 URGH, FORT WAYNE AND CHICAGO RAILWAY
 OPERATED BY
PENNSYLVANIA COMPANY
 WESTERN DIVISION
 STATION 22425+50 TO STATION 22478+30
 SCALE: 1 IN. = 100 FT. JUNE 30, 1918
 OFFICE OF VALUATION ENGINEER
 PITTSBURGH, PA.

PORTER COUNTY, INDIANA
 CENTER TOWNSHIP
 T. 35 N., R. 6 W.



SCHEDULE OF SIDINGS AND CROSSOVERS

Side Track Number	Location	Class	Length	Width	Area	Total	Remarks
1	Center Township	B	906	32	29000	29000	
2		B	1018	32	32580	61580	
3		B	528	32	16900	78480	

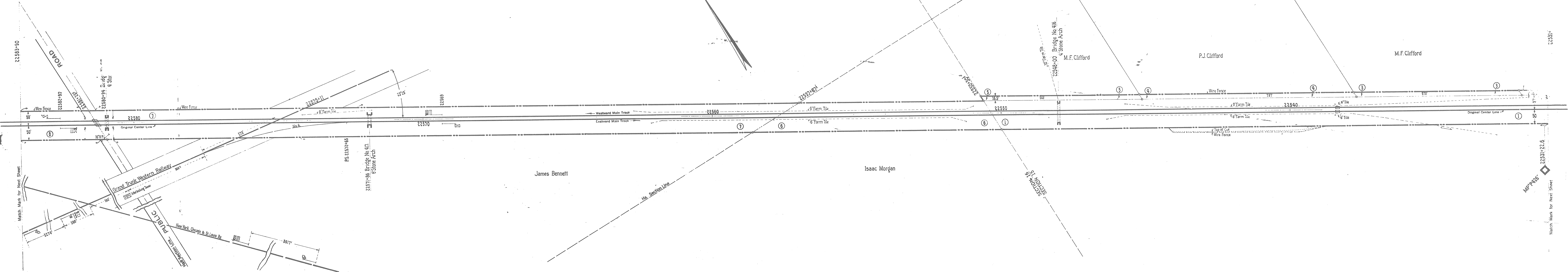
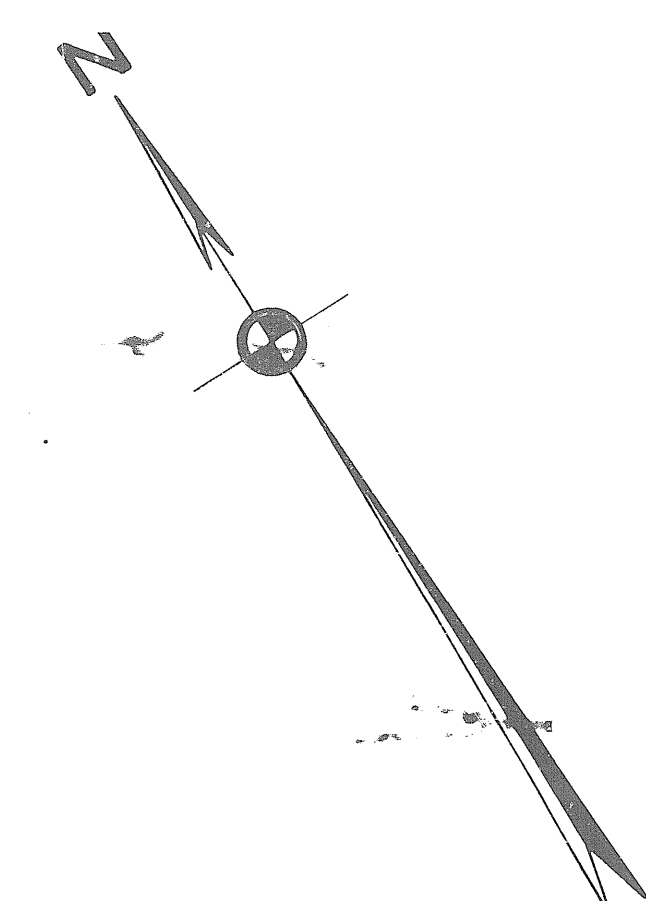
Correct as of June 30th 192
Correct as of June 30th 192
Correct as of June 30th 1921. No Revision.
Correct as of June 30th 1921. No Revision.
Correct as of June 30th 1923. No Revision.
Correct as of June 30th 1919. No Revision.
Correct as of June 30th 1918. No Revision.
Correct as of June 30th 1917. No Revision.

SCANNED JANUARY 2007
PORTER COUNTY SURVEYOR'S OFFICE
 155 Indiana Avenue Suite 303 Valparaiso, Indiana 46383 (219) 465.3560
 Kevin D. Breitzke, P.E., L.S. - Porter County Surveyor

Sheet No. 125 V. 3 Indiana, of Pittsburgh, Fort Wayne and Chicago Railway
 from Survey Station 22478+30 to Survey Station 22531+10.
 Chief Draftsman.

RIGHT OF WAY AND TRACK MAP
 PITTSBURGH, FORT WAYNE AND CHICAGO RAILWAY
 OPERATED BY
PENNSYLVANIA COMPANY
 WESTERN DIVISION
 STATION 22478+30 TO STATION 22531+10
 SCALE: 1 IN. = 100 FT. JUNE 30, 1916
 OFFICE OF VALUATION ENGINEER
 PITTSBURGH, PA.

PORTER COUNTY, INDIANA
 CENTER TOWNSHIP
 T. 35 N., R. 6 W.



SCHEDULE OF SIDINGS AND CROSSOVERS

Side Track Number	Location	Class	Length June 30, 1916	Total	Remarks
1	Center Township	Private	189	316	505 G.T.W.Ry. Interchange

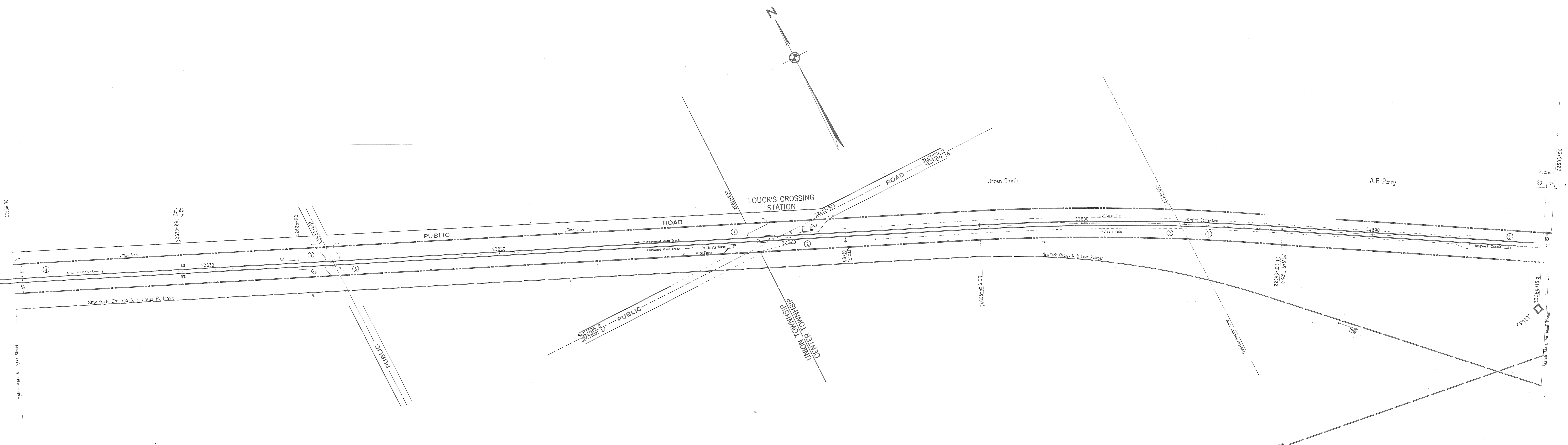
Correct as of June 30th 1915
 Correct as of June 30th 1916
 Correct as of June 30th 1917
 Correct as of June 30th 1918
 Correct as of June 30th 1919
 Correct as of June 30th 1920
 Correct as of June 30th 1921
 Correct as of June 30th 1922

SCANNED JANUARY 2007
PORTER COUNTY SURVEYOR'S OFFICE
 155 Indiana Avenue, Suite 303, Valparaiso, Indiana 46383 (219) 465-3560
 Kevin D. Breitzke, P.E., L.S. - Porter County Surveyor

Sheet No. 106V, 3 Indiana, of Pittsburgh, Fort Wayne and Chicago Railway
 from Survey Station 22531+10 to Survey Station 22583+90
 Chief Draftsman

RIGHT OF WAY AND TRACK MAP
 PITTSBURGH, FORT WAYNE AND CHICAGO RAILWAY
 OPERATED BY
PENNSYLVANIA COMPANY
 WESTERN DIVISION
 STATION 22531+10 TO STATION 22583+90
 SCALE: 1 IN. = 100 FT. JUNE 30, 1916
 OFFICE OF VALUATION ENGINEER
 PITTSBURGH, PA.

NAME	ADDRESS	DATE	REMARKS
1. A. B. Perry	WYOMING	June 27, 1888	2000
2. Orren Smith	Do	June 27, 1888	2000
3. E. Bennett	WYOMING	July 29, 1888	2000
4. H. Long	WYOMING	July 29, 1888	2000
5. C. P. Fogg	WYOMING	July 29, 1888	2000



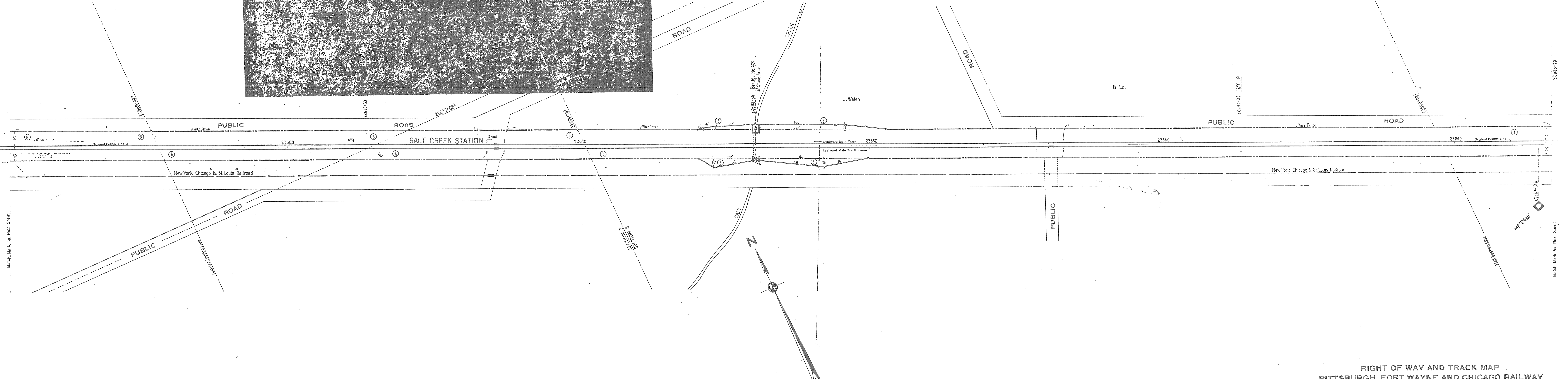
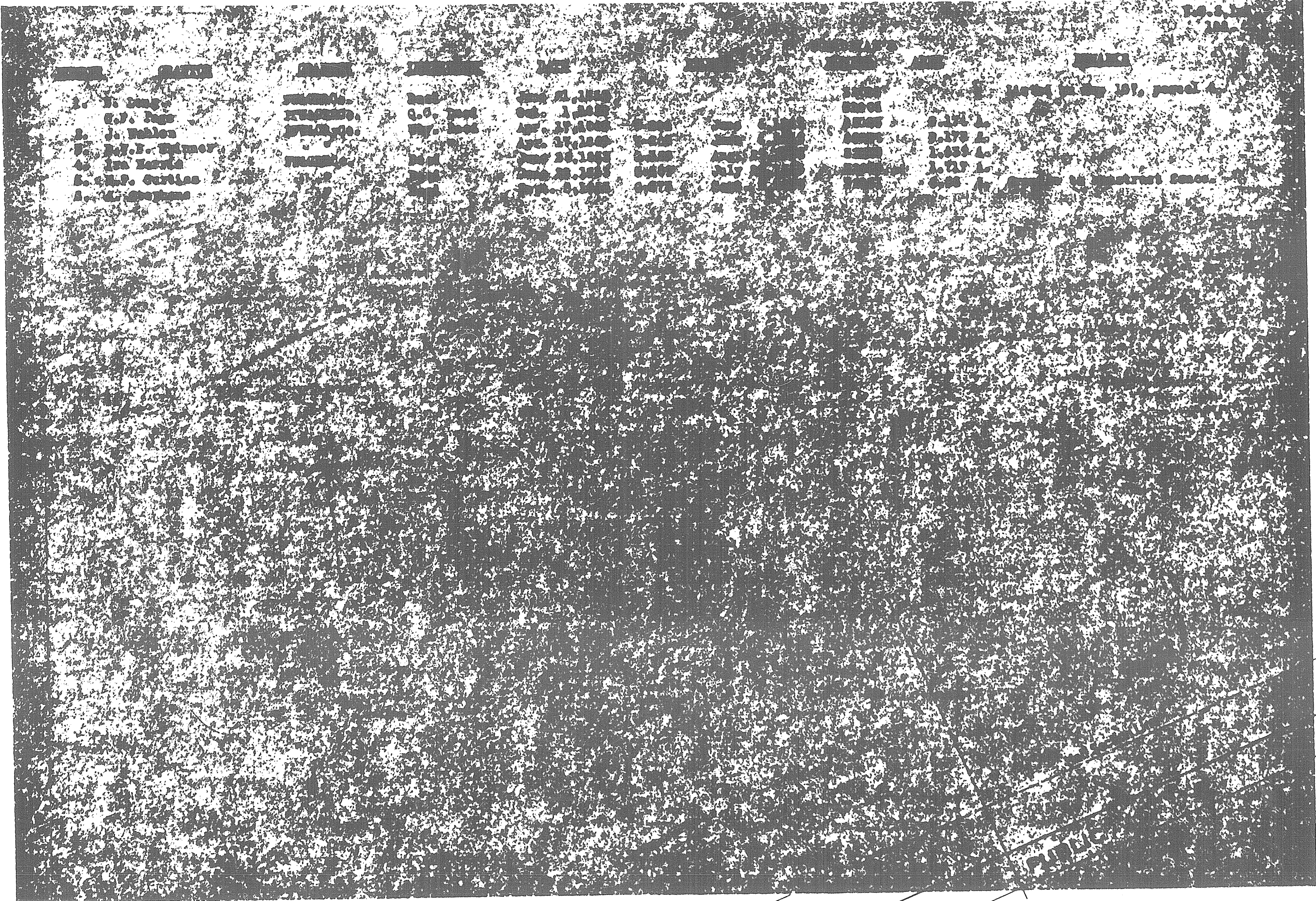
Correct as of June 30th 1922	No Revision.
Correct as of June 30th 1921	No Revision.
Correct as of June 30th 1920	No Revision.
Correct as of June 30th 1919	No Revision.
Correct as of June 30th 1918	No Revision.
Correct as of June 30th 1917	No Revision.

SCANNED JANUARY 2007
PORTER COUNTY SURVEYOR'S OFFICE
 155 Indiana Avenue Suite 303 Valparaiso, Indiana 46383 (219) 465.3560
 Kevin D. Breitzke, P.E., L.S. - Porter County Surveyor

Sheet No. 107V.3 Indiana, of Pittsburgh, Fort Wayne and Chicago Railway
 from Survey Station 22583+90 to Survey Station 22636+70.
 Chief Draftsman.

RIGHT OF WAY AND TRACK MAP
PITTSBURGH, FORT WAYNE AND CHICAGO RAILWAY
 OPERATED BY
PENNSYLVANIA COMPANY
 WESTERN DIVISION
 STATION 22583+90 TO STATION 22636+70
 SCALE: 1 IN. = 100 FT. JUNE 30, 1918
 OFFICE OF VALUATION ENGINEER
 PITTSBURGH, PA.

PORTER COUNTY, INDIANA
UNION TOWNSHIP
T. 35 N., R. 6 W



Correct as of June 30th 1922	
Correct as of June 30th 1922	
Correct as of June 30th 1922	No Revision
Correct as of June 30th 1922	No Revision
Correct as of June 30th 1919	No Revision
Correct as of June 30th 1918	No Revision
Correct as of June 30th 1917	No Revision

SCANNED JANUARY 2007
PORTER COUNTY SURVEYOR'S OFFICE
 155 Indiana Avenue Suite 303 Valparaiso, Indiana 46383 (219) 465.3560
 Kevin D. Breitake, P.E., L.S. - Porter County Surveyor

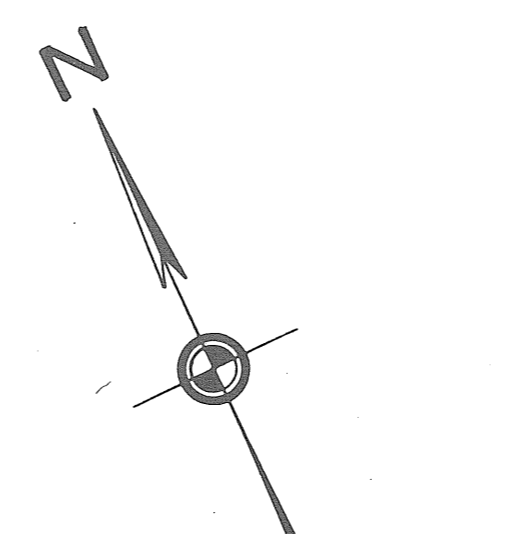
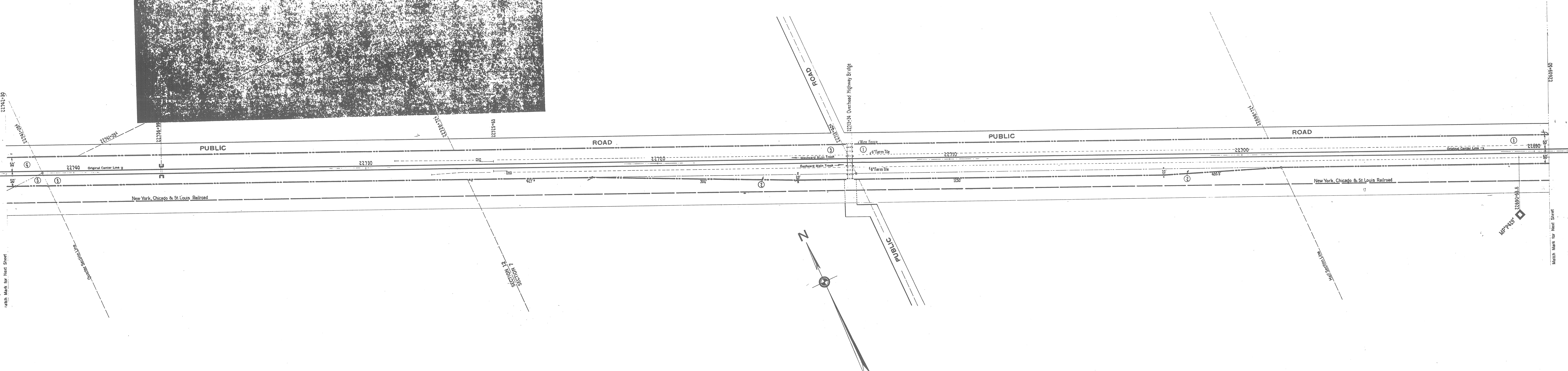
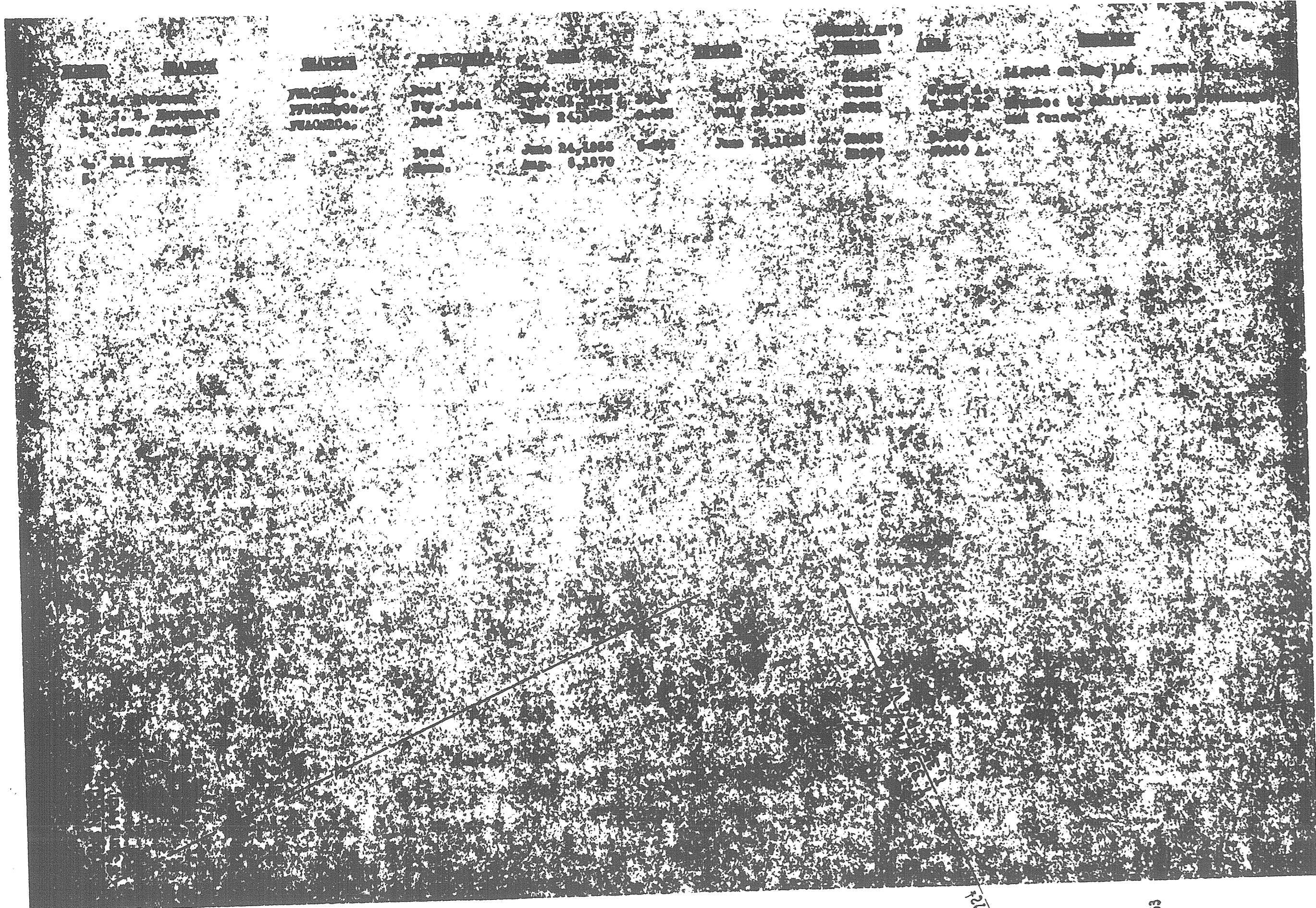
Sheet No. 108V, 3 Indiana, of Pittsburgh, Fort Wayne and Chicago Railway
 from Survey Station 22686+70 to Survey Station 22689+50.

Chief Draftsman.

RIGHT OF WAY AND TRACK MAP
 PITTSBURGH, FORT WAYNE AND CHICAGO RAILWAY
 OPERATED BY
PENNSYLVANIA COMPANY
 WESTERN DIVISION
 STATION 22686+70 TO STATION 22689+50

SCALE 1 IN. = 100 FT. JUNE 30, 1918
 OFFICE OF VALUATION ENGINEER
 PITTSBURGH, PA.

PORTER COUNTY, INDIANA
UNION TOWNSHIP



Correct as of June 30th 192	
Correct as of June 30th 192	
Correct as of June 30th 1921.	No Revision.
Correct as of June 30th 1921.	No Revision.
Correct as of June 30th 1920.	No Revision.
Correct as of June 30th 1919.	No Revision.
Correct as of June 30th 1918.	No Revision.
Correct as of June 30th 1917.	No Revision.

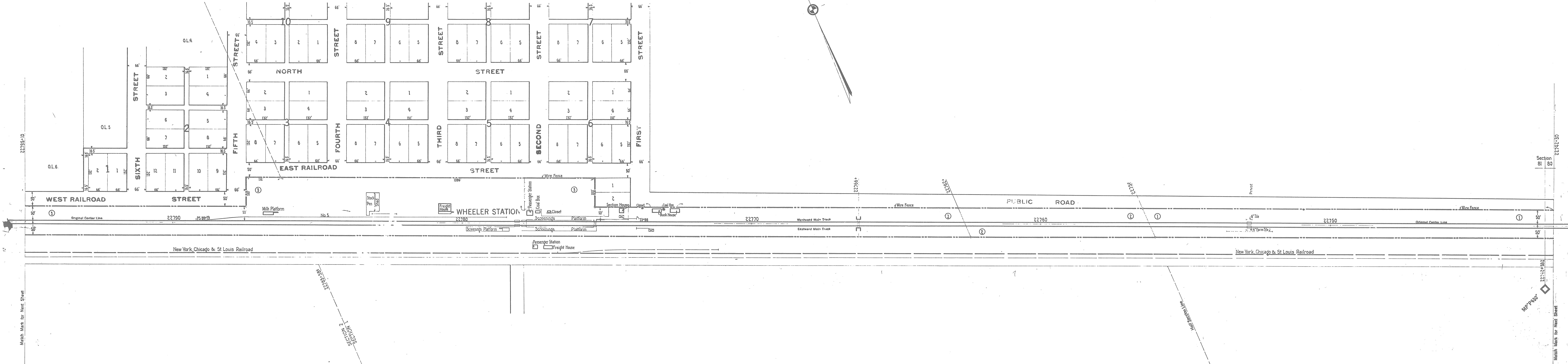
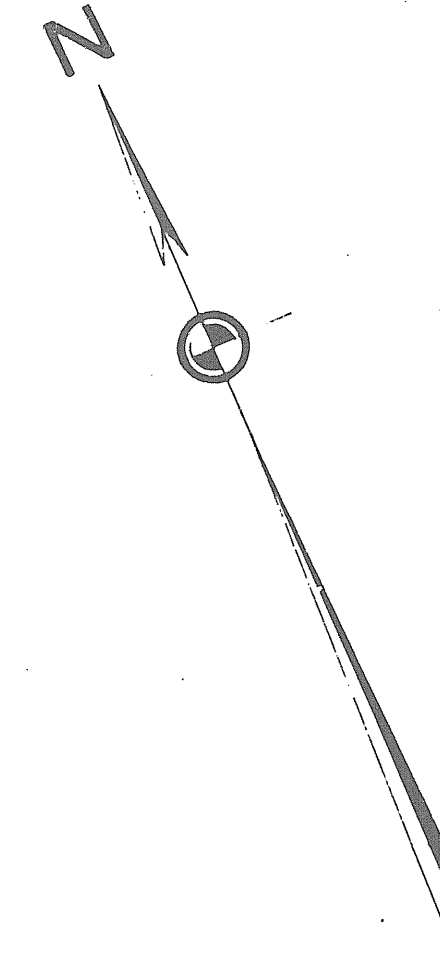
SCANNED JANUARY 2007
PORTER COUNTY SURVEYOR'S OFFICE
 155 Indiana Avenue Suite 303 Valparaiso, Indiana 46383 (219) 465.3560
 Kevin D. Breitzke, P.E., L.S. - Porter County Surveyor

Sheet No. 109 V. 3 Indiana, of Pittsburgh, Fort Wayne and Chicago Railway
 from Survey Station 22689+50 to Survey Station 22742+50.
 Chief Draftsman.

RIGHT OF WAY AND TRACK MAP
 PITTSBURGH, FORT WAYNE AND CHICAGO RAILWAY
 OPERATED BY
PENNSYLVANIA COMPANY
 WESTERN DIVISION
 STATION 22689+50 TO STATION 22742+50
 SCALE: 1 IN. = 100 FT. JUNE 30, 1916
 OFFICE OF VALUATION ENGINEER
 PITTSBURGH, PA.

PORTER COUNTY, INDIANA
UNION TOWNSHIP
T. 35 N., R. 7 W.

W H E E L E R



SCHEMATIC OF SIDINGS AND CROSSOVERS

Side Trk Number	Location	Class	R.R. Co.	Private	Total	Remarks
5	Union Township	B	1073		1073	

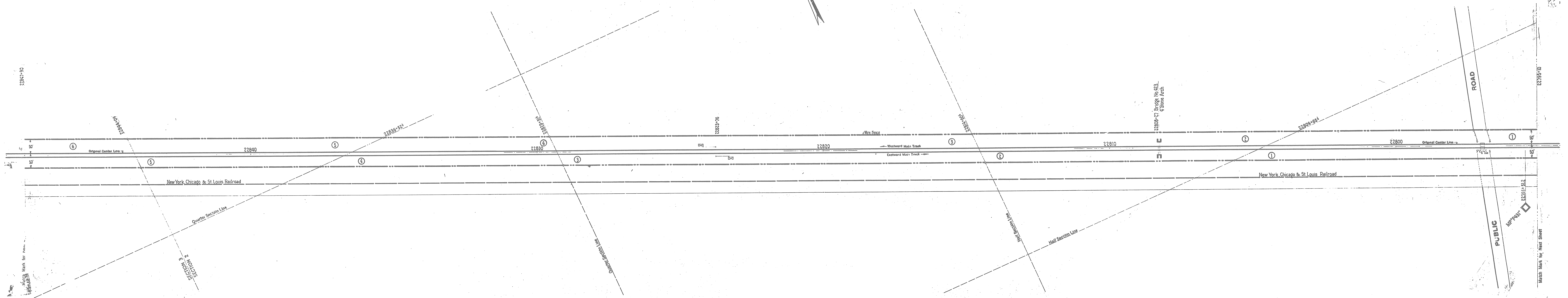
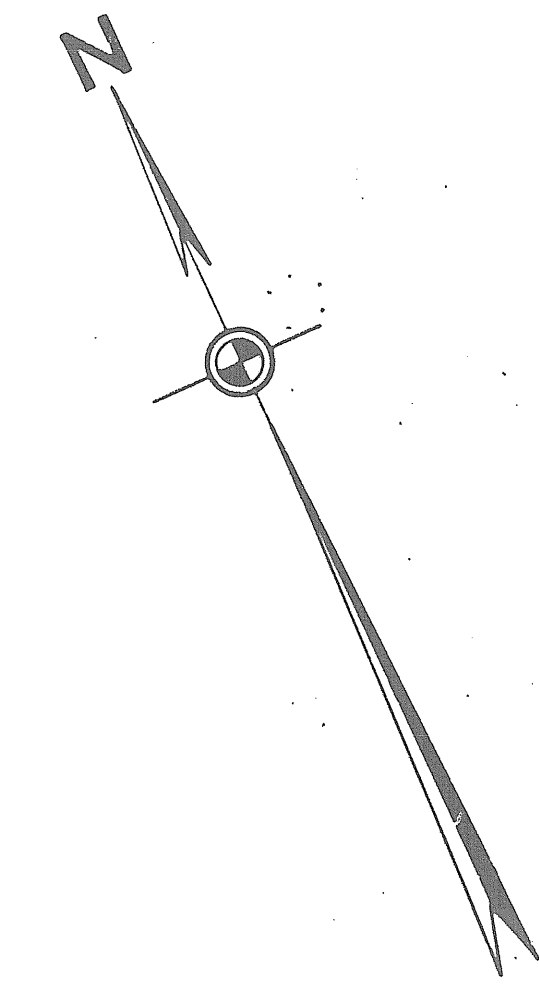
Correct as of June 30th 192
Correct as of June 30th 192
Correct as of June 30th 192
Correct as of June 30th 192
Correct as of June 30th 192
Correct as of June 30th 192
Correct as of June 30th 1918. No Revision.
Correct as of June 30th 1917. No Revision.

SCANNED JANUARY 2007
PORTER COUNTY SURVEYOR'S OFFICE
155 Indiana Avenue Suite 303 Valparaiso, Indiana 46383 (219) 465-3560
Kevin D. Breitzke, P.E., L.S. - Porter County Surveyor

Sheet No. 10 V. 3 Indiana, of Pittsburgh, Fort Wayne and Chicago Railway
from Survey Station 22792+30 to Survey Station 22795+10.
Chief Draftsman.

RIGHT OF WAY AND TRACK MAP
PITTSBURGH, FORT WAYNE AND CHICAGO RAILWAY
OPERATED BY
PENNSYLVANIA COMPANY
WESTERN DIVISION
STATION 22792+30 TO STATION 22795+1
SCALE: 1 IN. = 100 FT. JUNE 30, 1916
OFFICE OF VALUATION ENGINEER
PITTSBURGH, PA.

PORTER COUNTY, INDIANA
 UNION TOWNSHIP
 T. 35 N., R. 7 W.



Correct as of June 30th 192	
Correct as of June 30th 192	
Correct as of June 30th 1922.	No Revision.
Correct as of June 30th 1921.	No Revision.
Correct as of June 30th 1920.	No Revision.
Correct as of June 30th 1919.	No Revision.
Correct as of June 30th 1918.	No Revision.
Correct as of June 30th 1917.	No Revision.

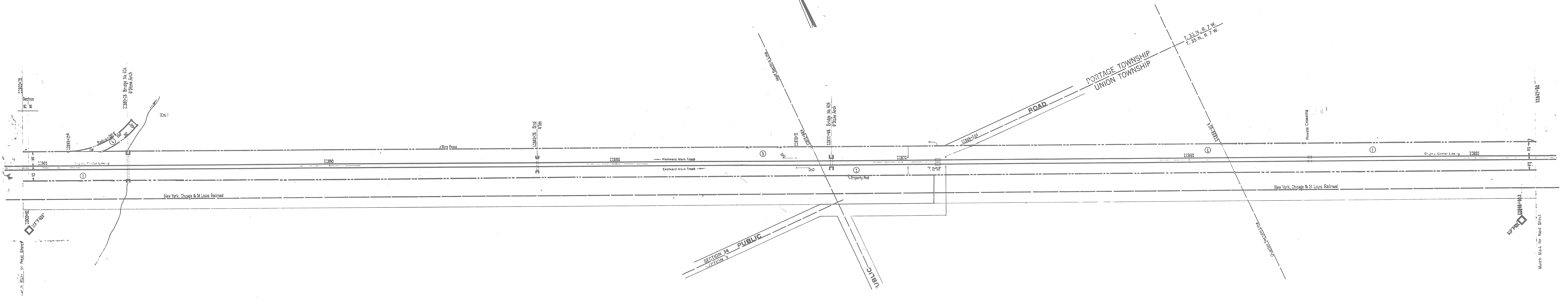
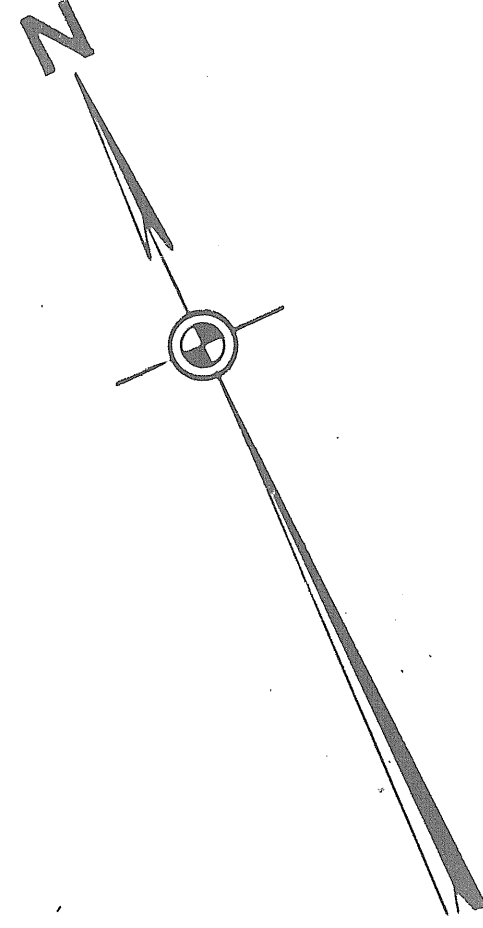
SCANNED JANUARY 2007
PORTER COUNTY SURVEYOR'S OFFICE
 155 Indiana Avenue Suite 303 Valparaiso, Indiana 46383 (219) 465.3560
 Kevin D. Breitzke, P.E., L.S. - Porter County Surveyor

Sheet No. 111 V. 3 Indiana, of Pittsburgh, Fort Wayne and Chicago Railway
 from Survey Station 22795+10 to Survey Station 22847+90
 Chief Draftsman.

RIGHT OF WAY AND TRACK MAP
 PITTSBURGH, FORT WAYNE AND CHICAGO RAILWAY
 OPERATED BY
PENNSYLVANIA COMPANY
 WESTERN DIVISION
 STATION 22795+10 TO STATION 22847+90
 SCALE: 1" = 100 FT. JUNE 30, 1919
 OFFICE OF VALUATION ENGINEER
 PITTSBURGH, PA.

V. 3
 INDIANA
 111

PORTER COUNTY, INDIANA

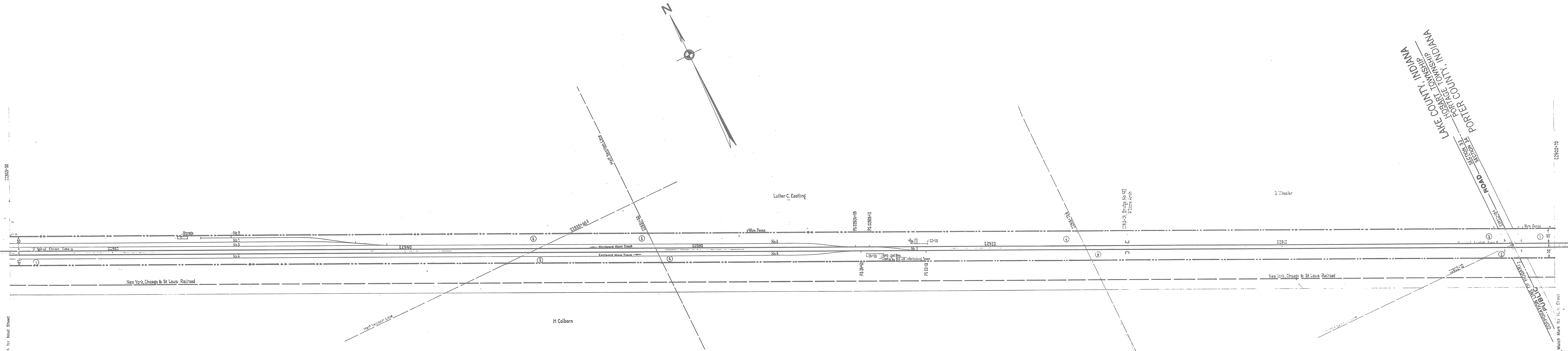


Correct as of June 30th 192	
Correct as of June 30th 192	
Correct as of June 30th 1921	No Revision.
Correct as of June 30th 1921	No Revision.
Correct as of June 30th 1920	No Revision.
Correct as of June 30th 1919	No Revision.
Correct as of June 30th 1918	No Revision.
Correct as of June 30th 1917	No Revision.

SCANNED JANUARY 2007
PORTER COUNTY SURVEYOR'S OFFICE
 155 Indiana Avenue Suite 303 Valparaiso, Indiana 46383 (219) 465.3560
 Kevin D. Breitzke, P.E., L.S. - Porter County Surveyor

Sheet No. 112 V. 3 Indiana, of Pittsburgh, Fort Wayne and Chicago Railway
 from Survey Station 22847+90 to Survey Station 22900+70
 Chief Draftsman.

RIGHT OF WAY AND TRACK MAP
PITTSBURGH, FORT WAYNE AND CHICAGO RAILWAY
 OPERATED BY
PENNSYLVANIA COMPANY
 WESTERN DIVISION
 STATION 22847+90 TO STATION 22900+70
 SCALE: 1 IN. = 100 FT. JUNE 30, 1916
 OFFICE OF VALUATION ENGINEER
 PITTSBURGH, PA.



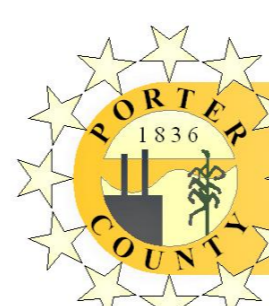
Match Mark for Next Sheet

Match Mark for Next Sheet

SCHEDULE OF SIDINGS AND CROSSOVERS

No. in A. Number	Location	Class	Length	Remarks
102	Hebert Corporation	102	102	
103		103	103	
104		104	104	
105		105	105	
106		106	106	
107		107	107	
108		108	108	
109		109	109	
110		110	110	

Correct as of June 30th 192
Correct as of June 30th 192
Correct as of June 30th 192
Correct as of June 30th 192
Correct as of June 30th 192
Correct as of June 30th 19
Correct as of June 30th 19
Correct as of June 30th 1917. No Revision.


SCANNED JANUARY 2007
PORTER COUNTY SURVEYOR'S OFFICE
 155 Indiana Avenue, Suite 303, Valparaiso, Indiana 46383 (219) 465-3560
 Kevin D. Breitzke, P.E., L.S. - Porter County Surveyor

Sheet No. 113 V. 3 Indiana, of Pittsburgh, Fort Wayne and Chicago Railway from Survey Station 22920+70 to Survey Station 22953+50.

Chief Draftsman.

RIGHT OF WAY AND TRACK MAP
PITTSBURGH, FORT WAYNE AND CHICAGO RAILWAY
 OPERATED BY
PENNSYLVANIA COMPANY
 WESTERN DIVISION
 STATION 22900+70 TO STATION 22953+50
 SCALE: 1 IN. = 100 FT. JUNE 30, 1916
 OFFICE OF VALUATION ENGINEER
 PITTSBURGH, PA.