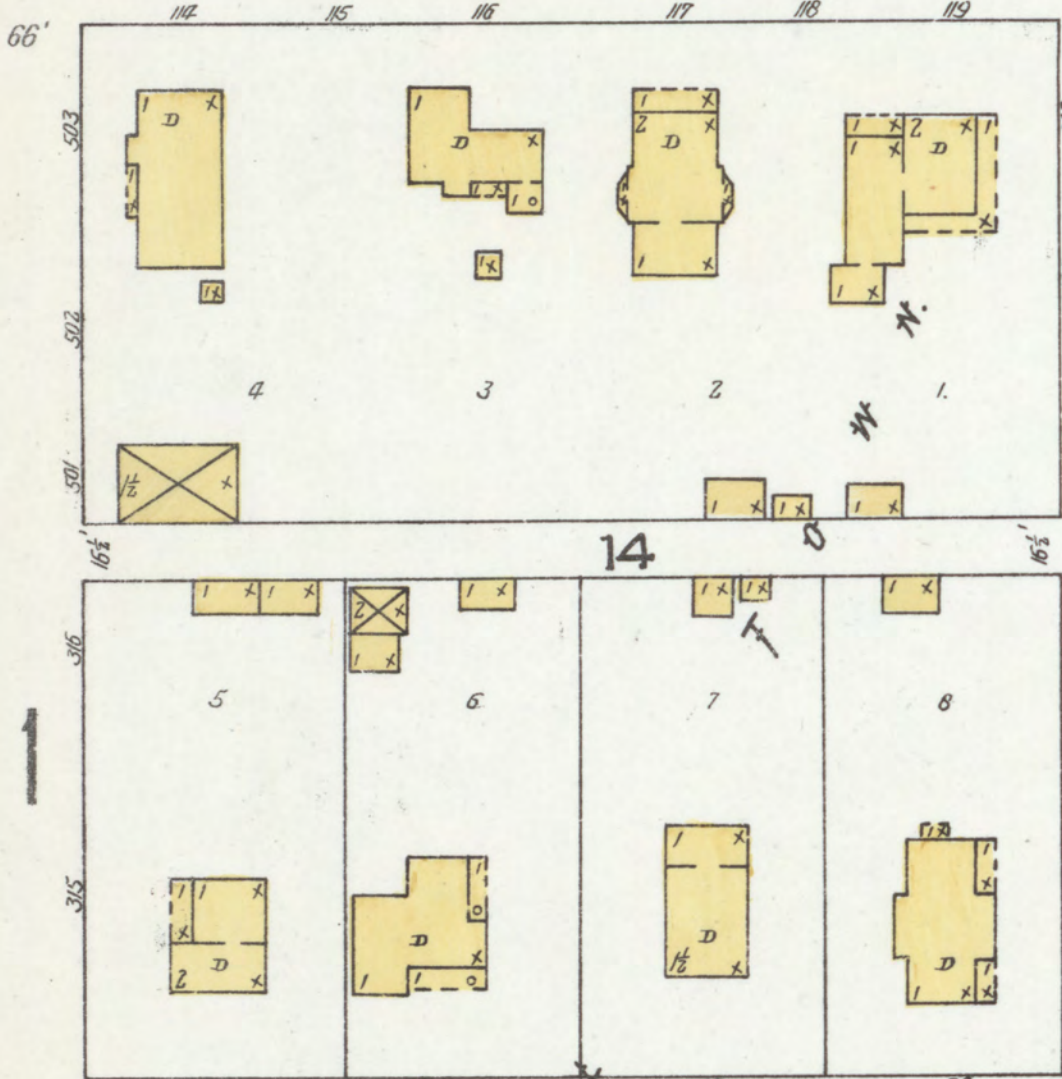


Map Division
Library of Congress

INDIANA (SOUTH)

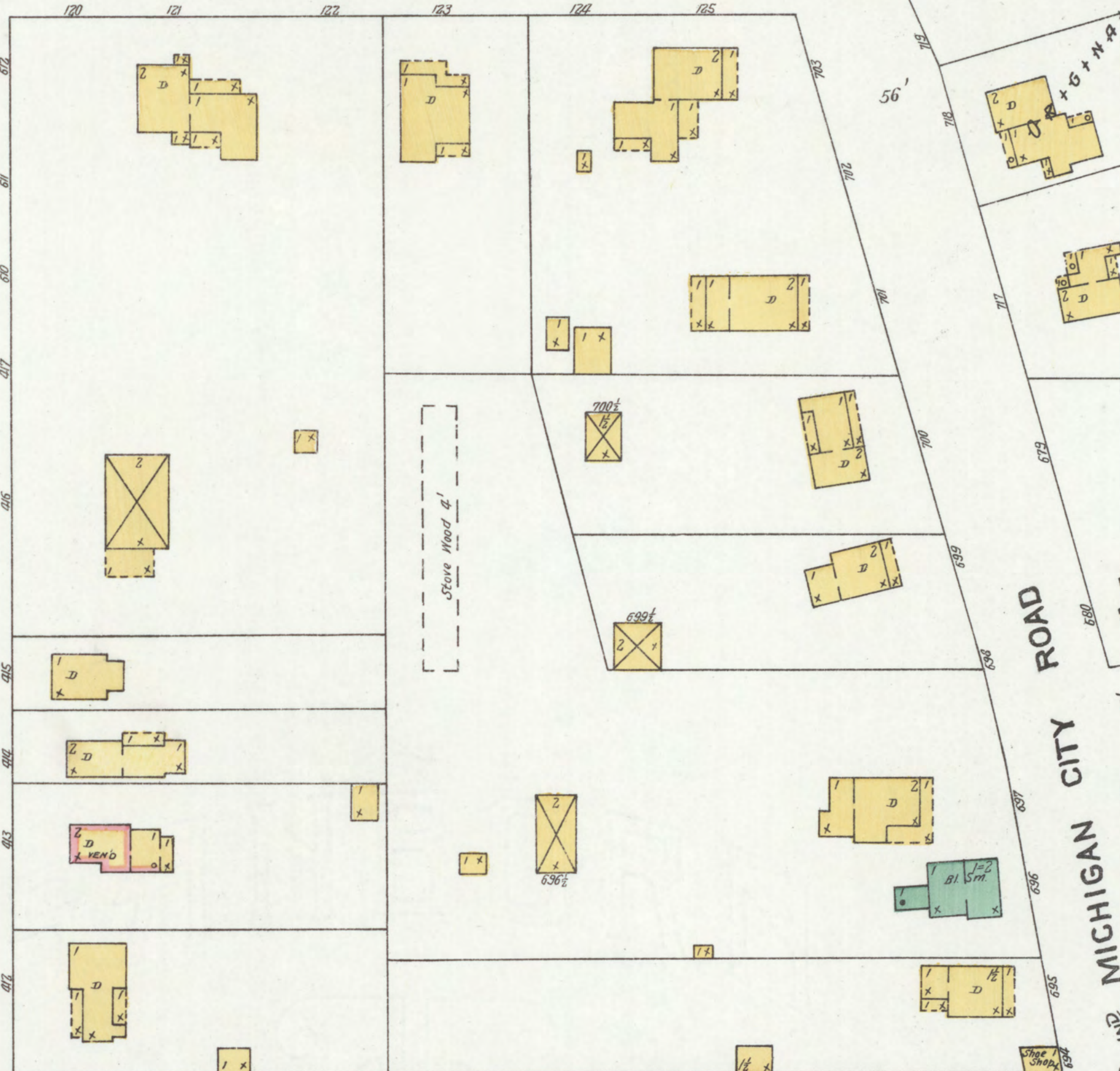
DEC. 1905
CHESTERTON
IND.



ORCHARD

FRANKLIN (WEST)

CALUMET (EAST)



ROAD

MICHIGAN CITY

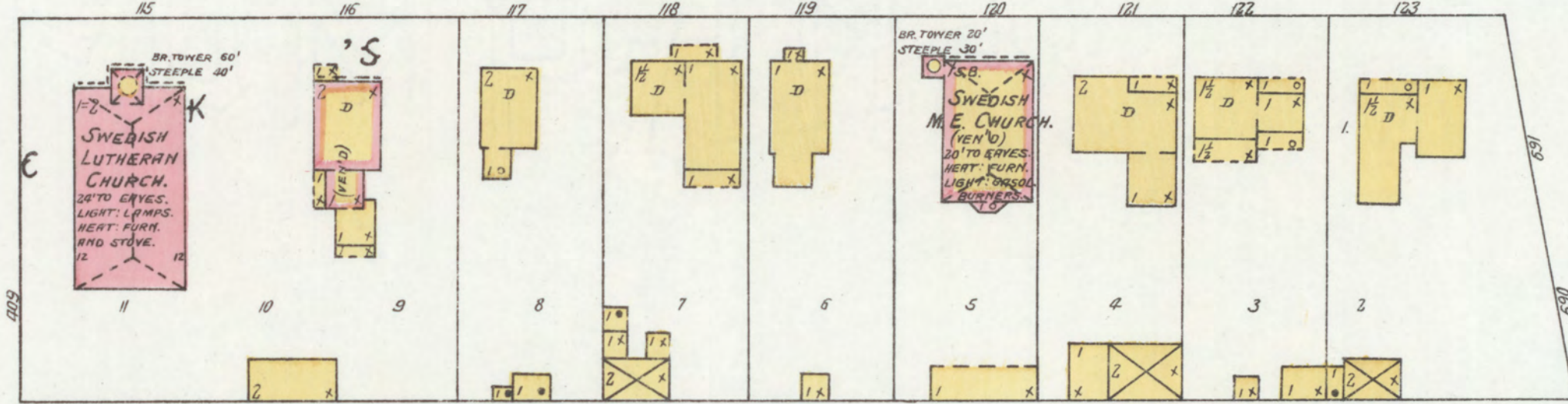
LITTLE

FRATEBAS

N.

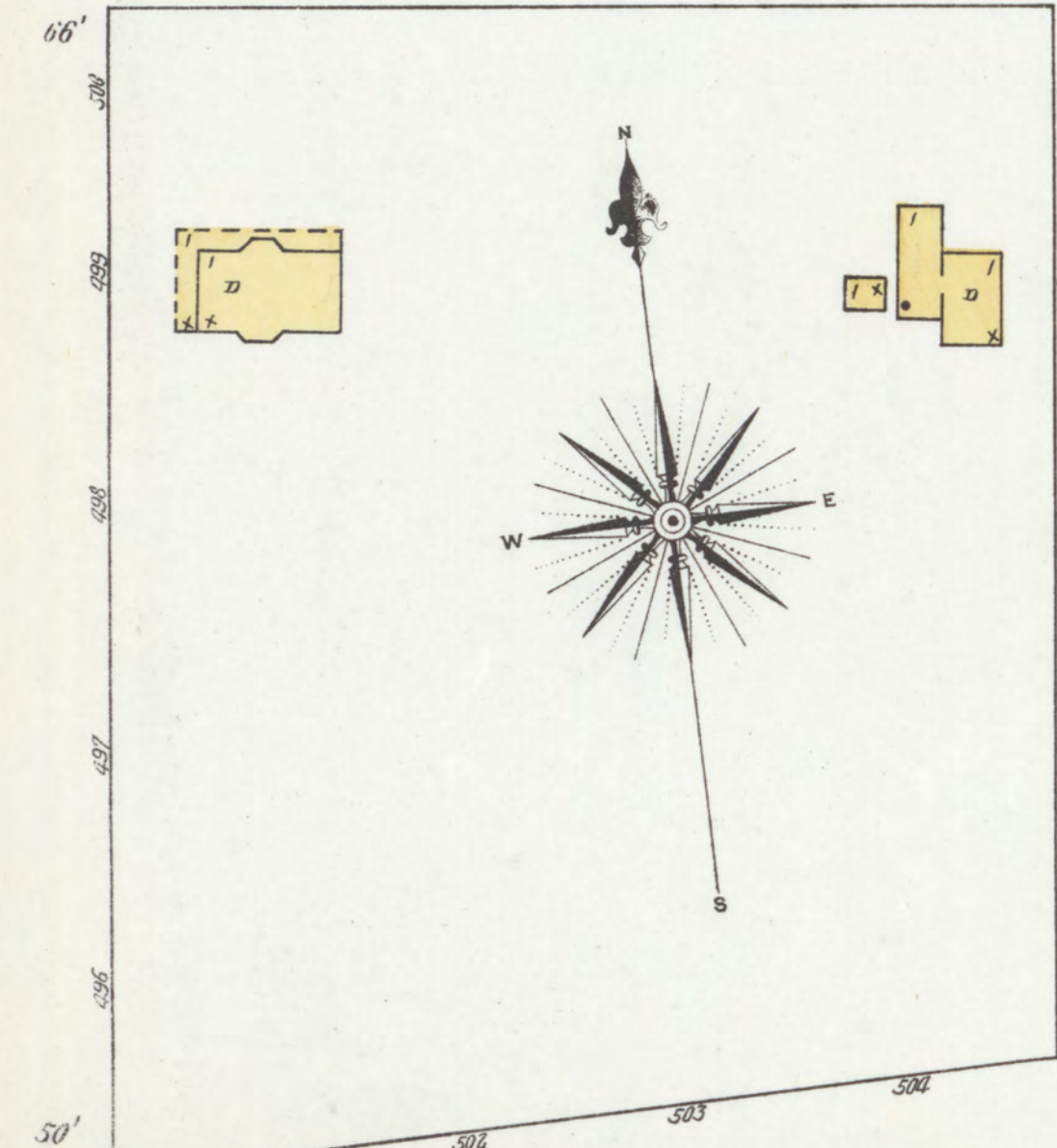
MORGAN

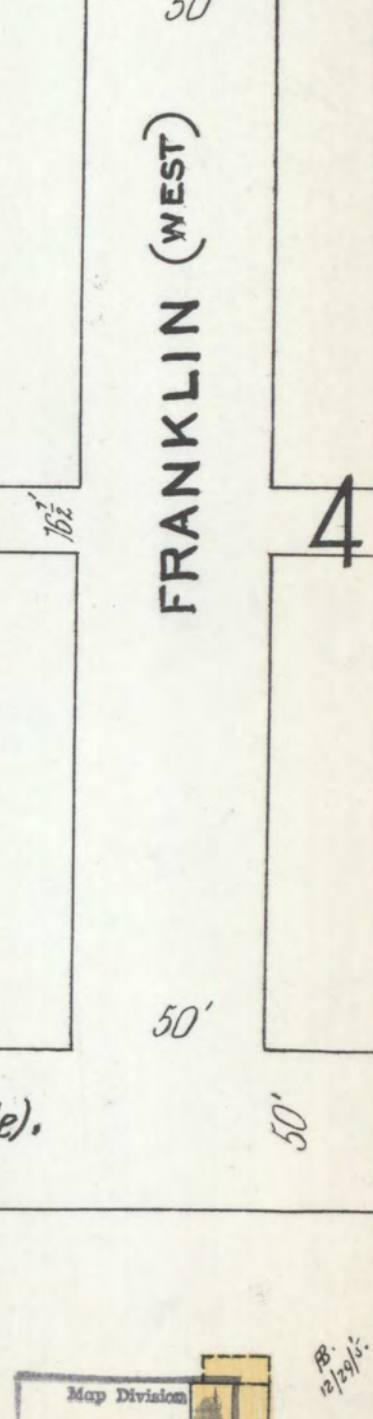
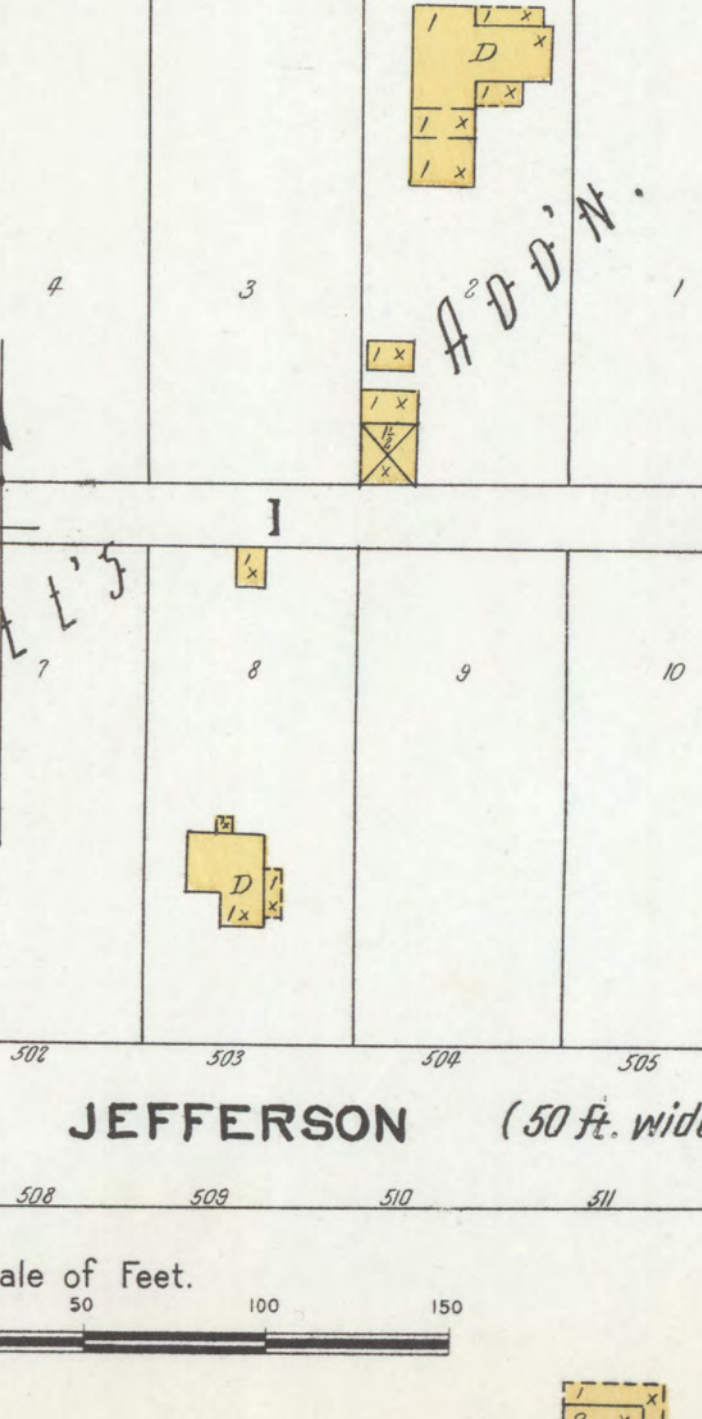
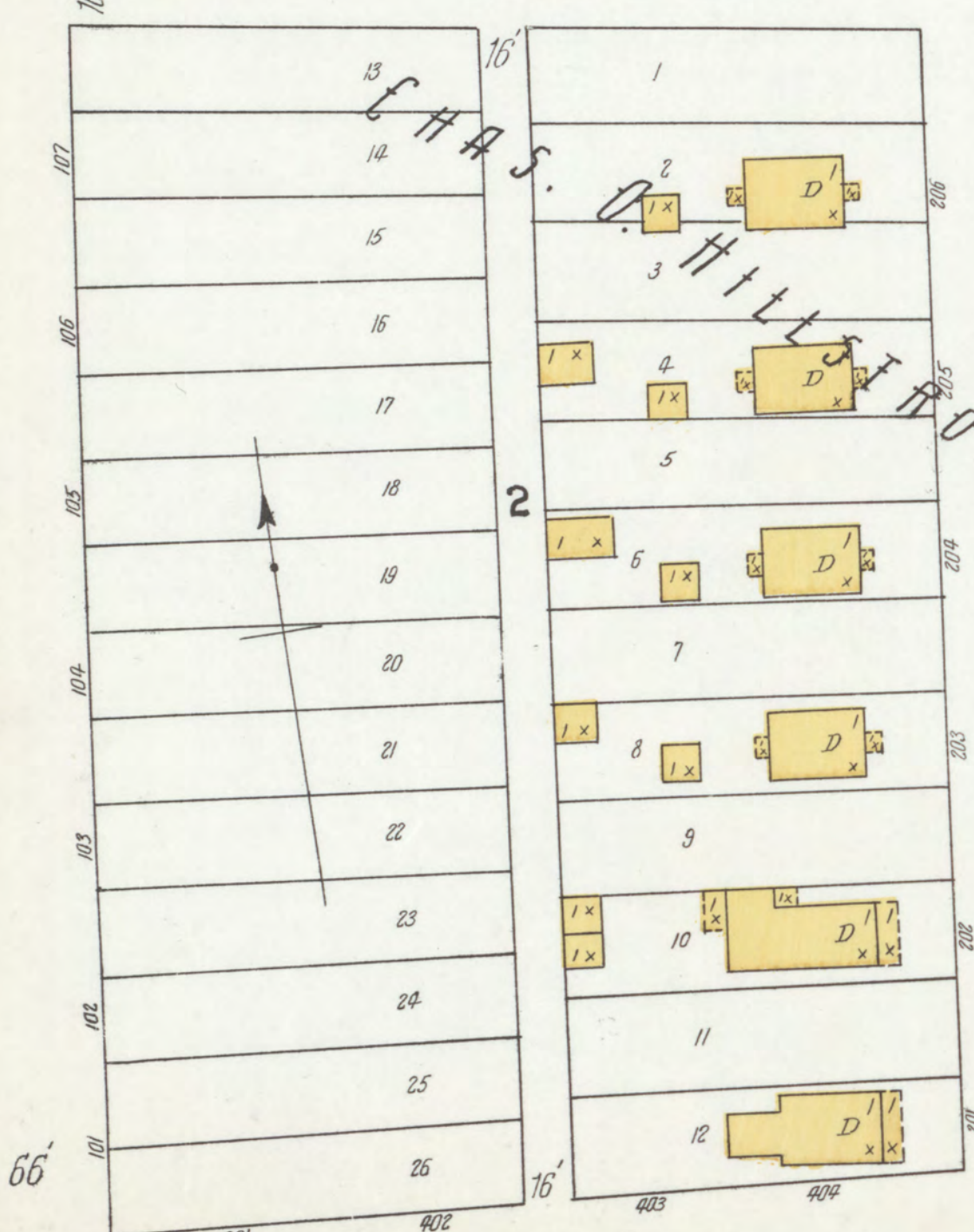
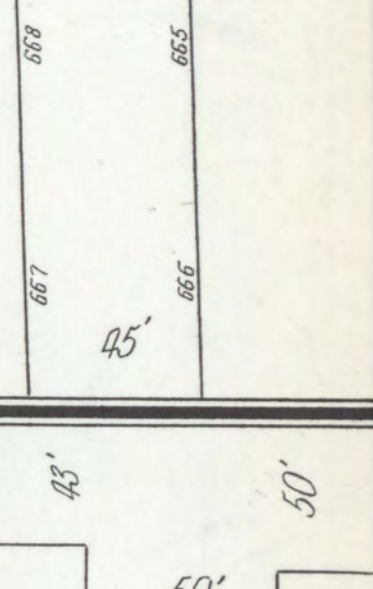
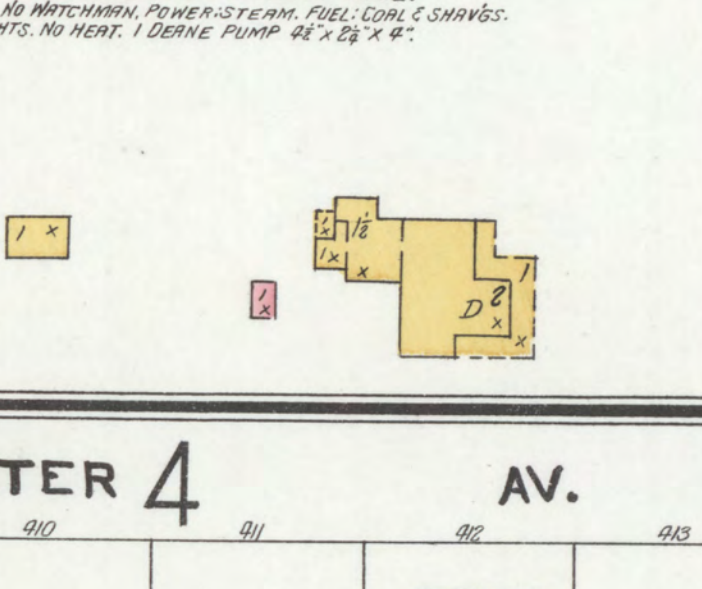
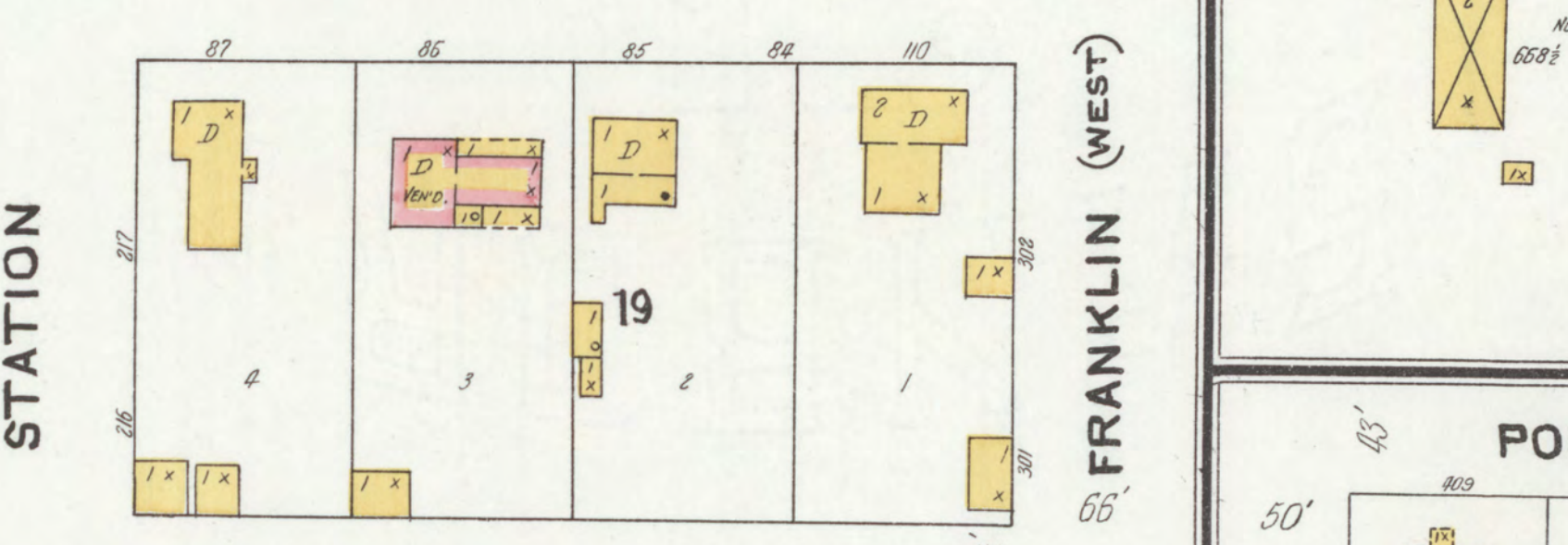
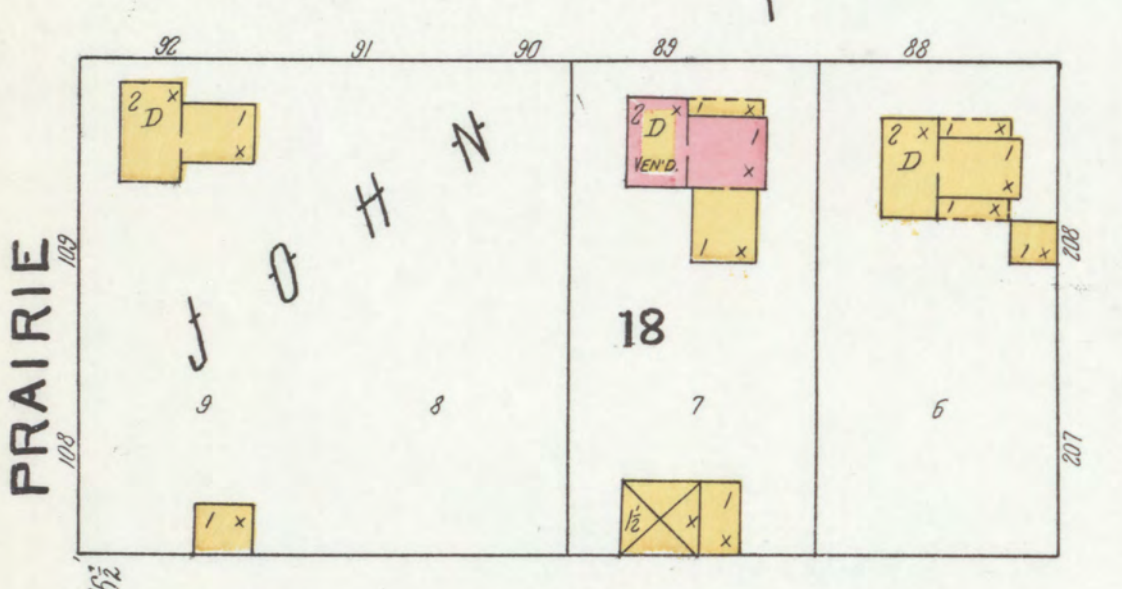
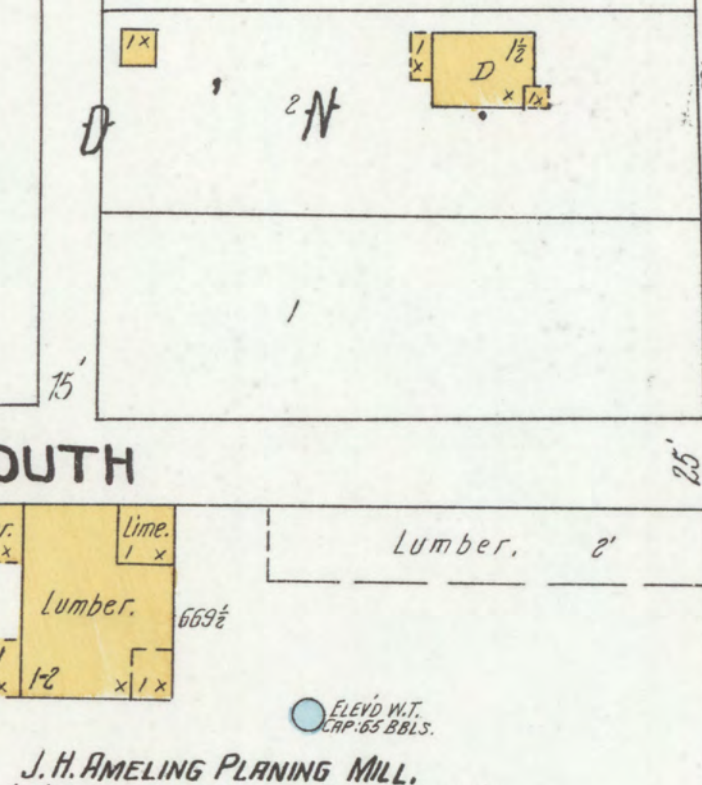
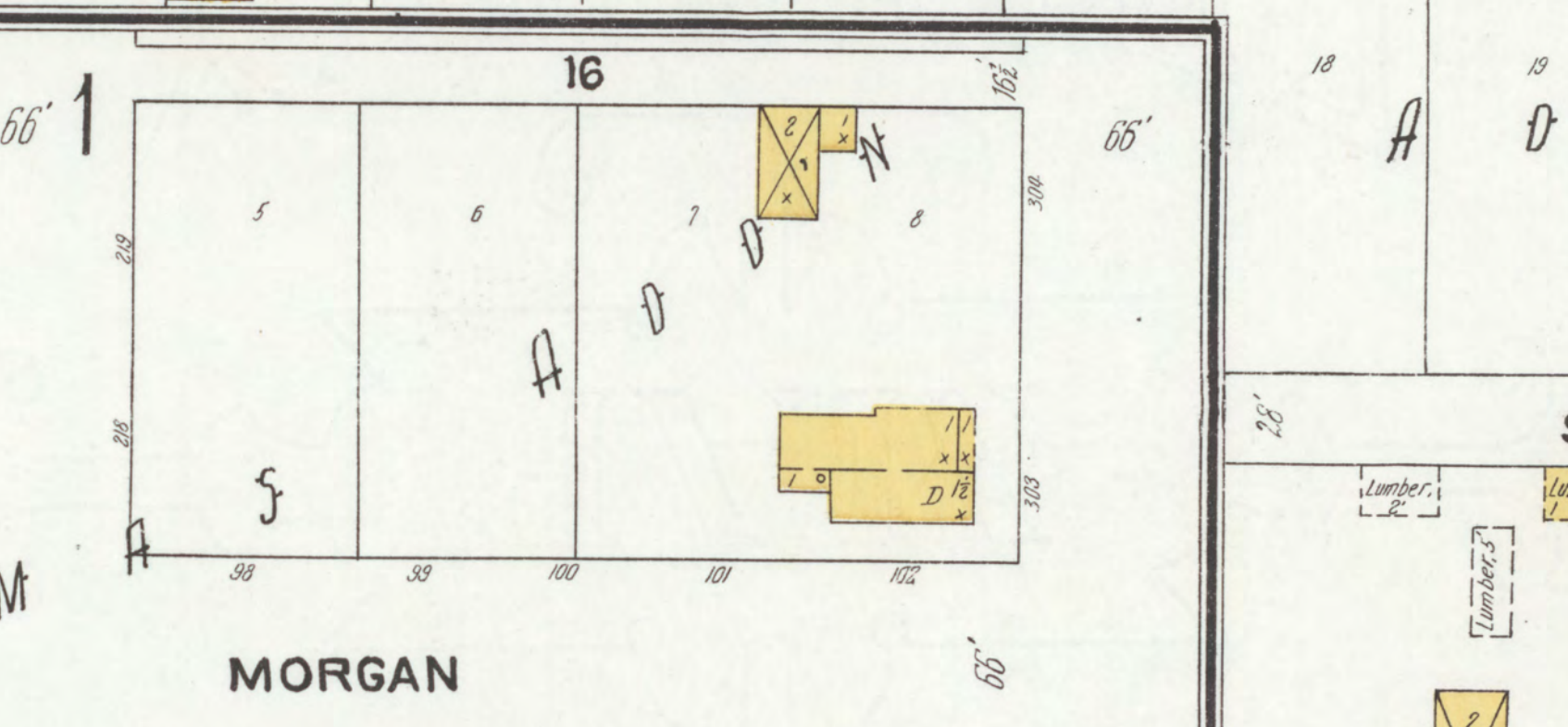
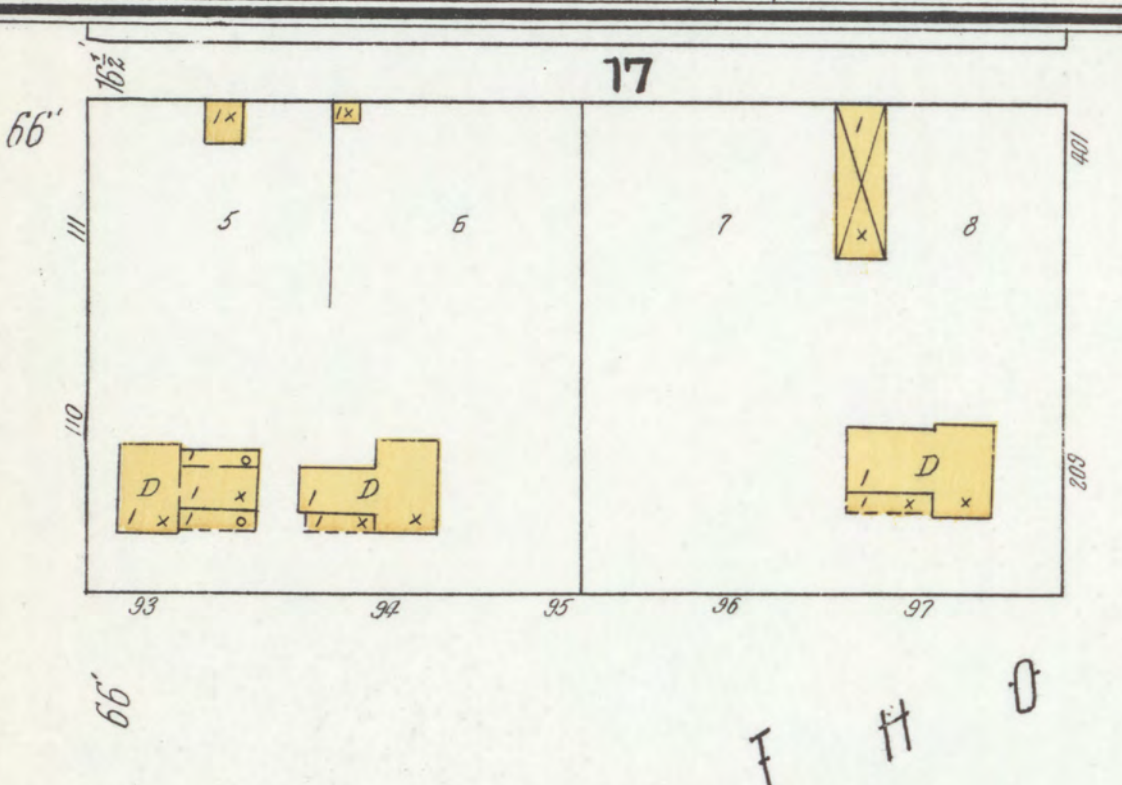
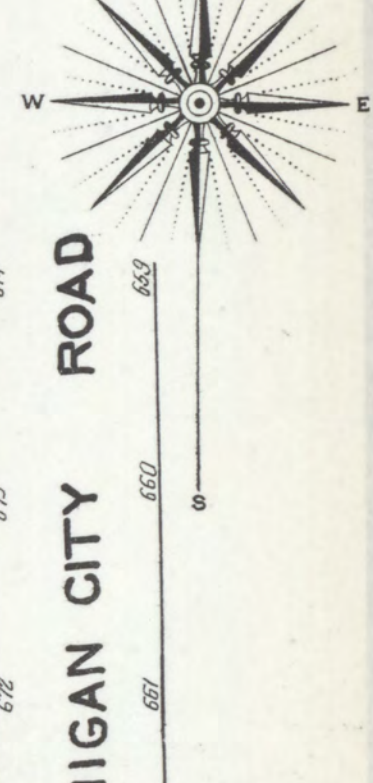
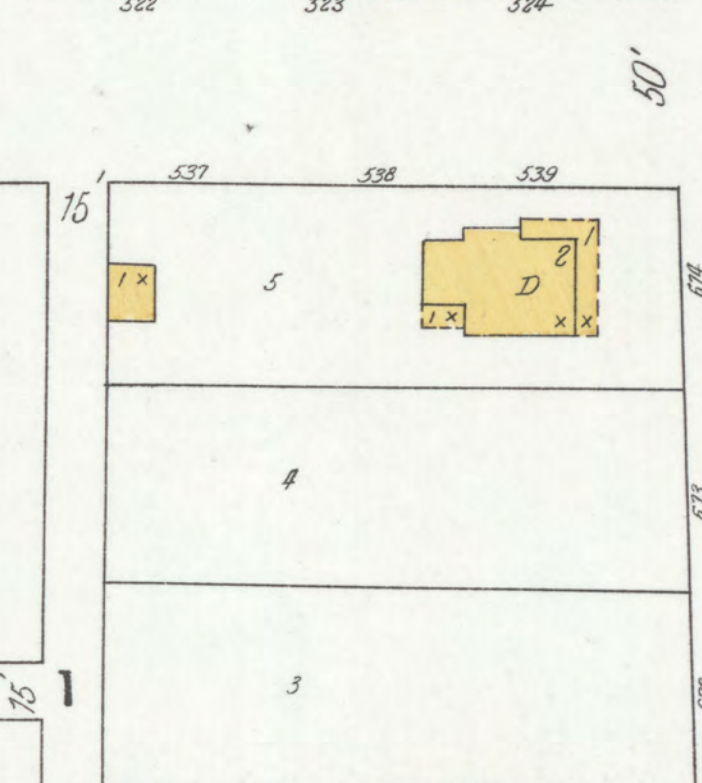
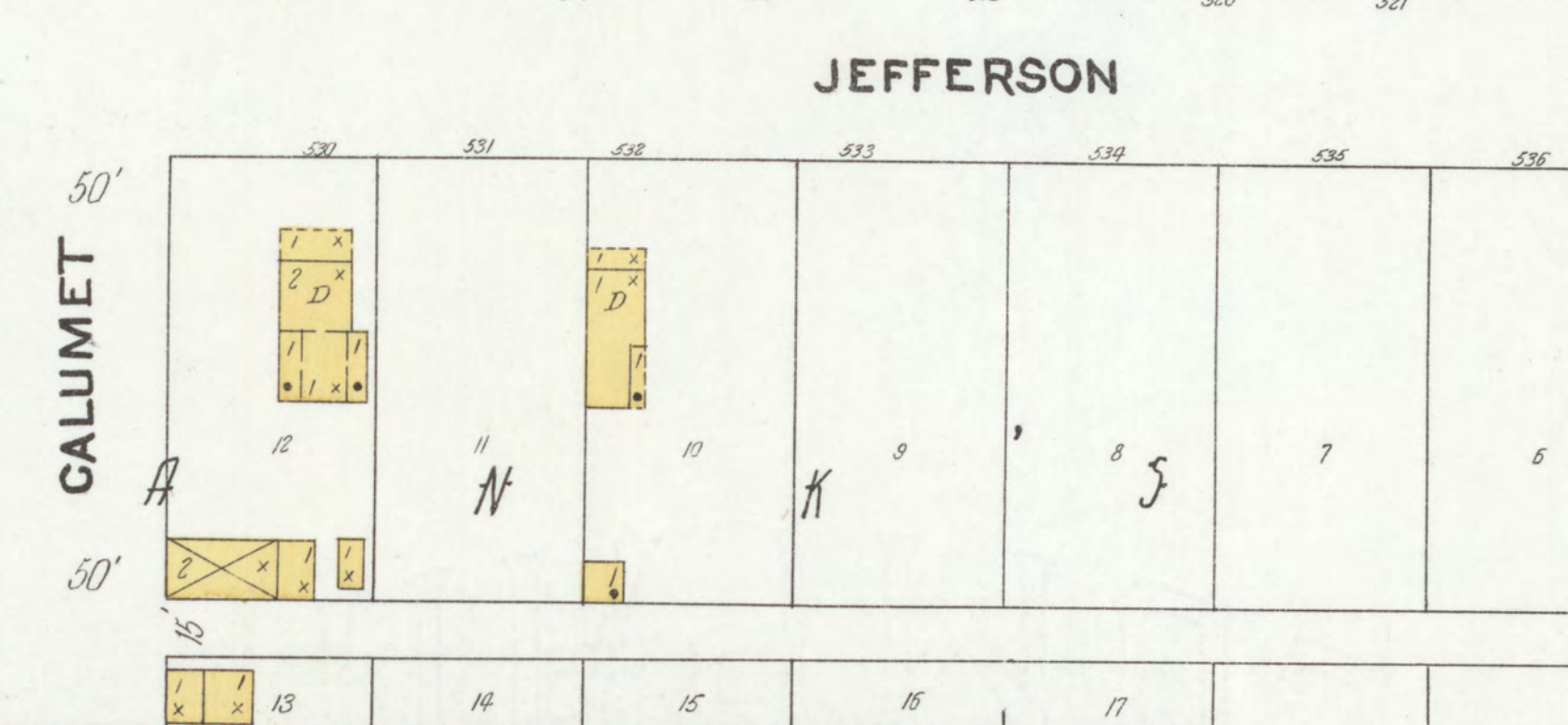
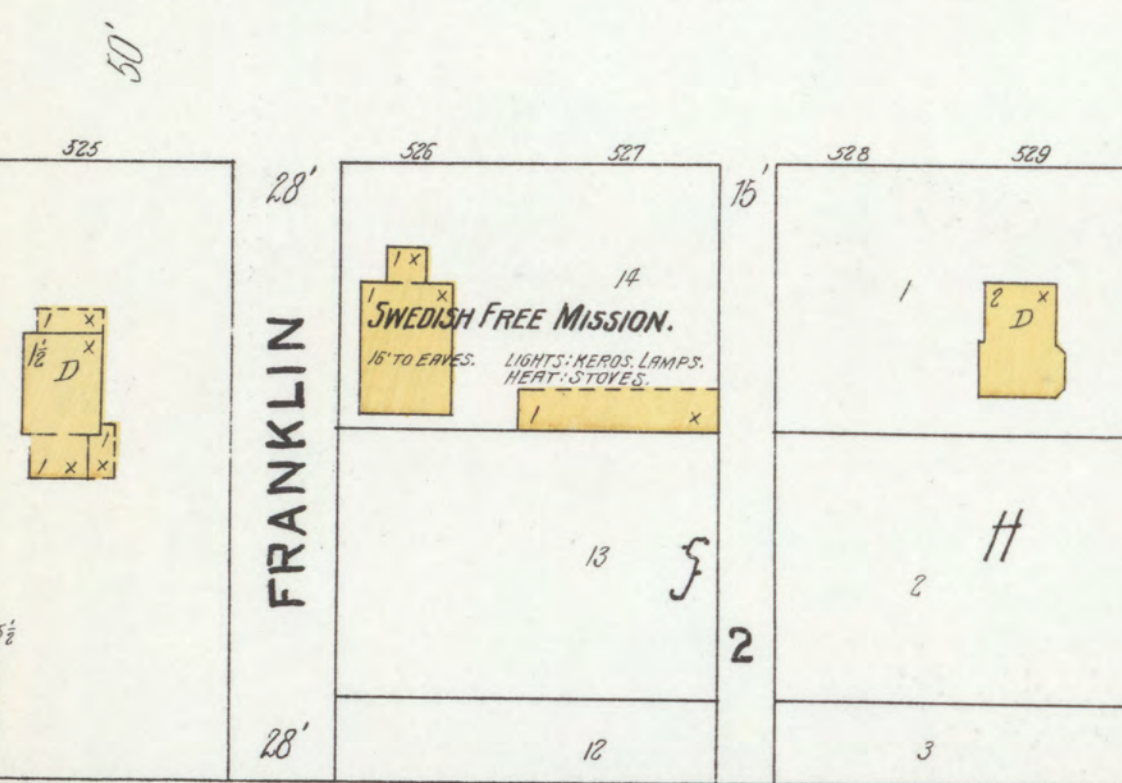
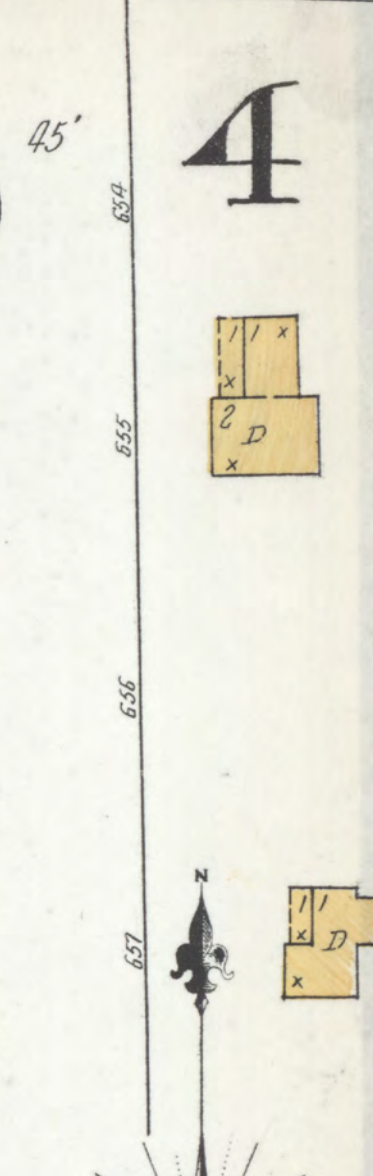
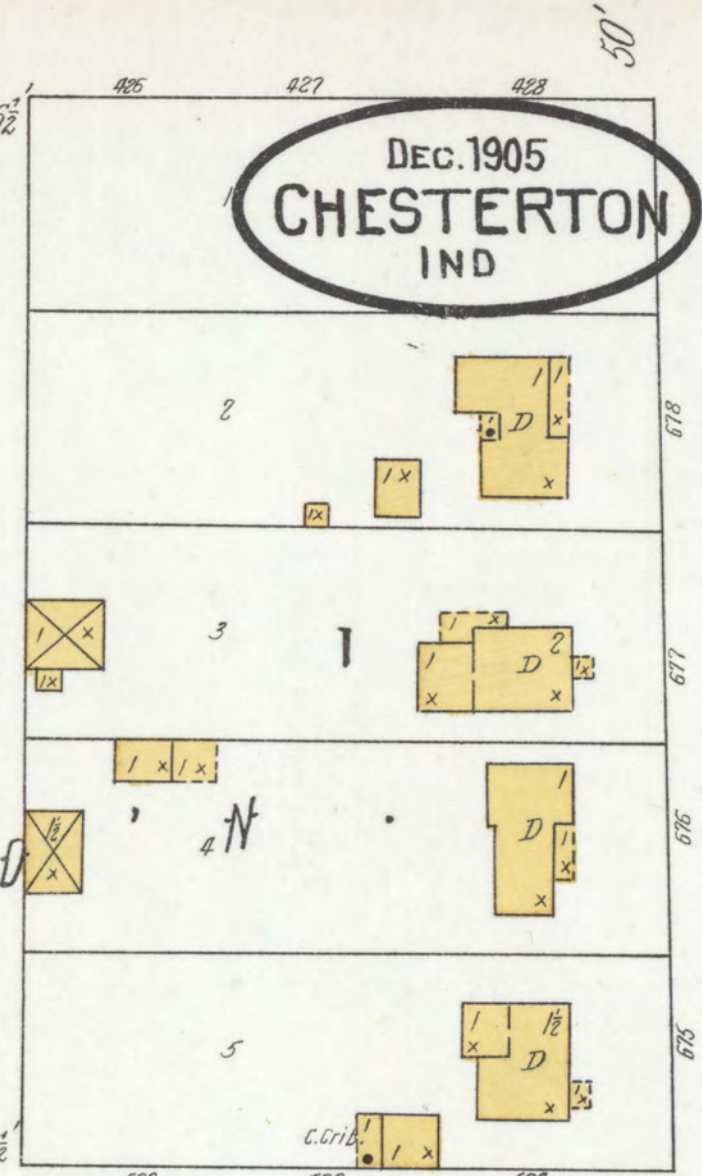
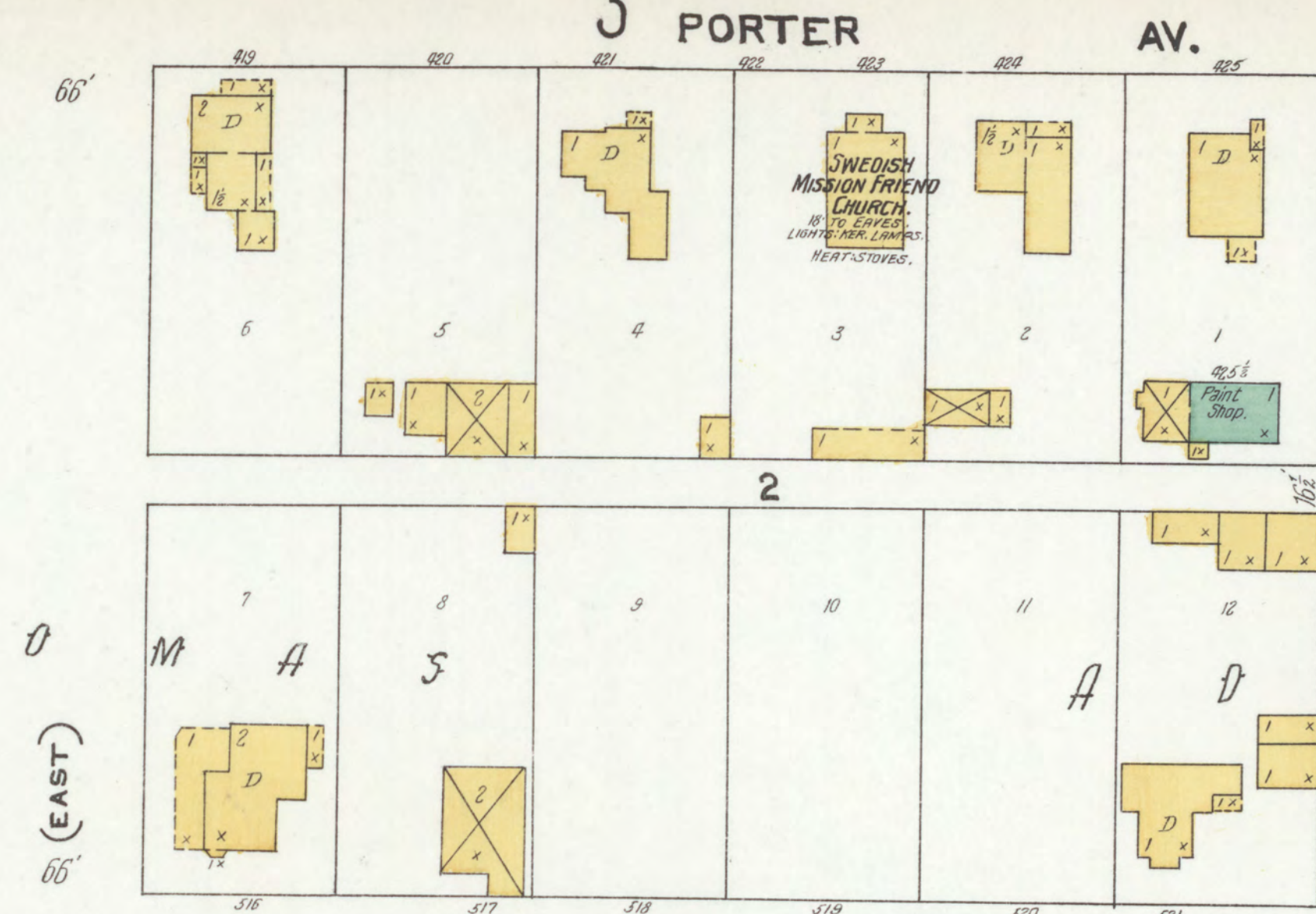
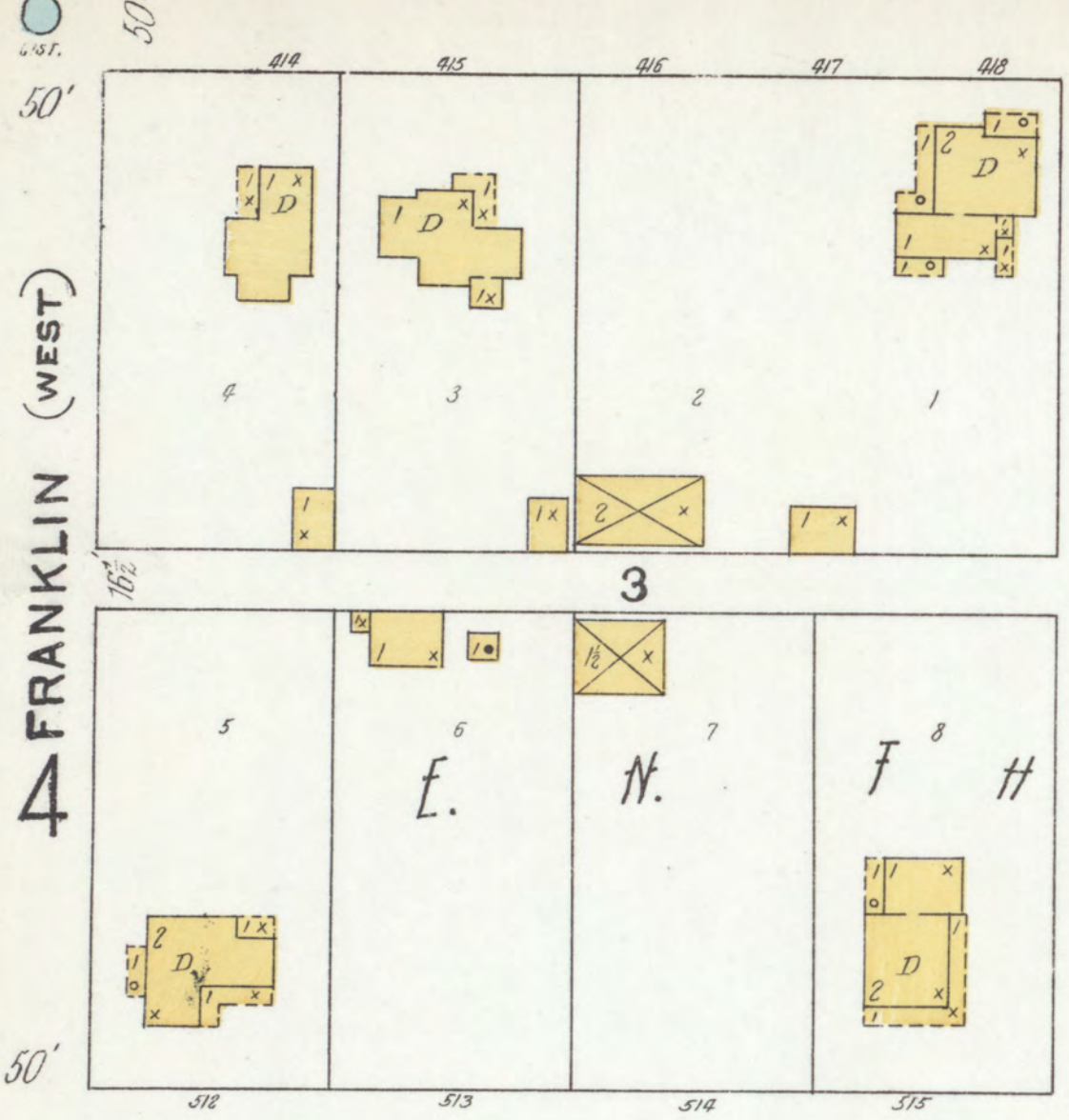
4



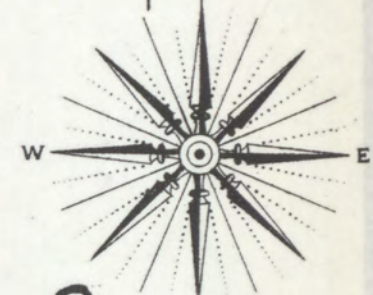
SWEDISH LUTHERAN CHURCH

SWEDISH M. E. CHURCH





Dec. 1905
CHESTERTON
IND



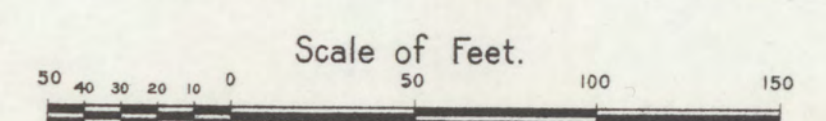
VALPARAISO AND MICHIGAN CITY ROAD

SOUTH

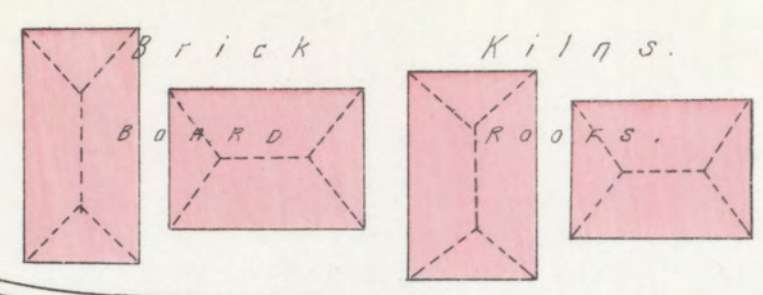
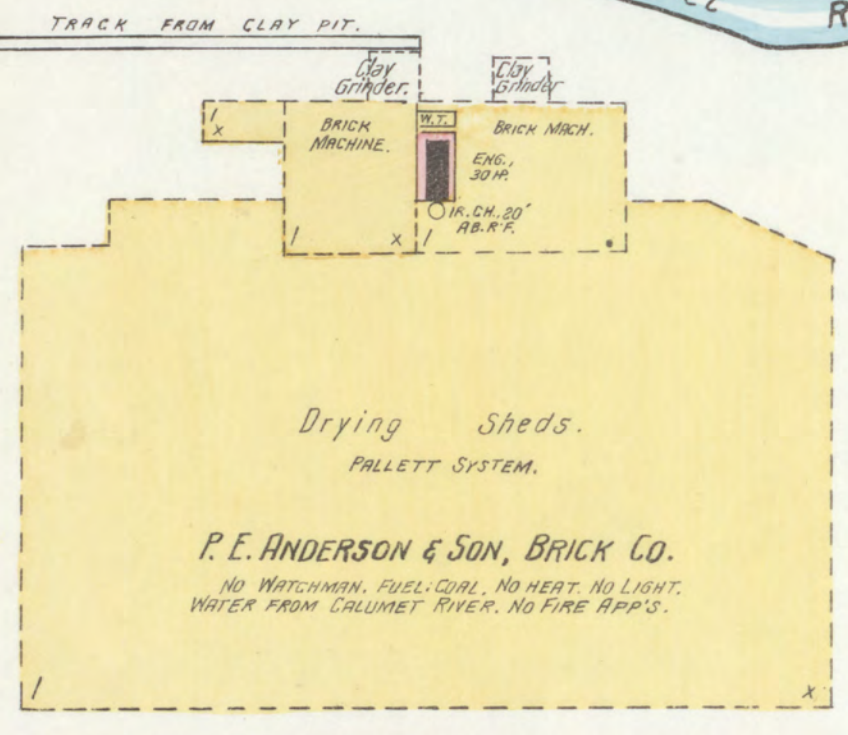
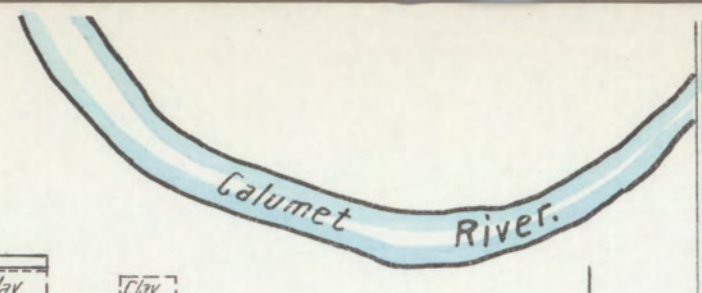
PORTER 4 AV.

JEFFERSON (50 ft. wide)

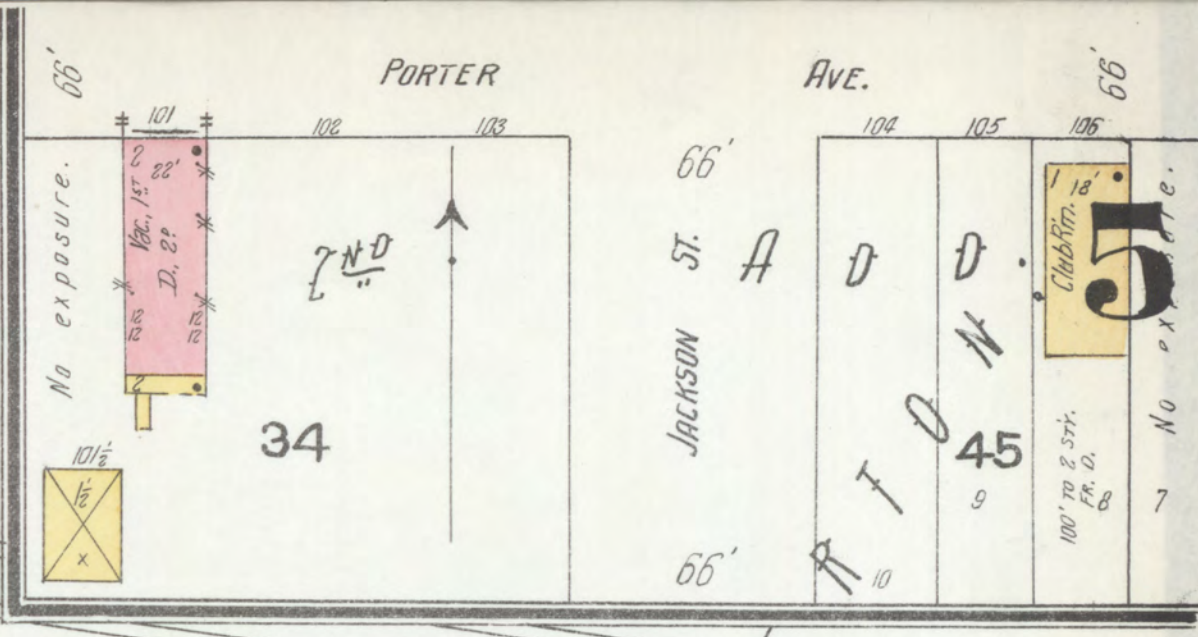
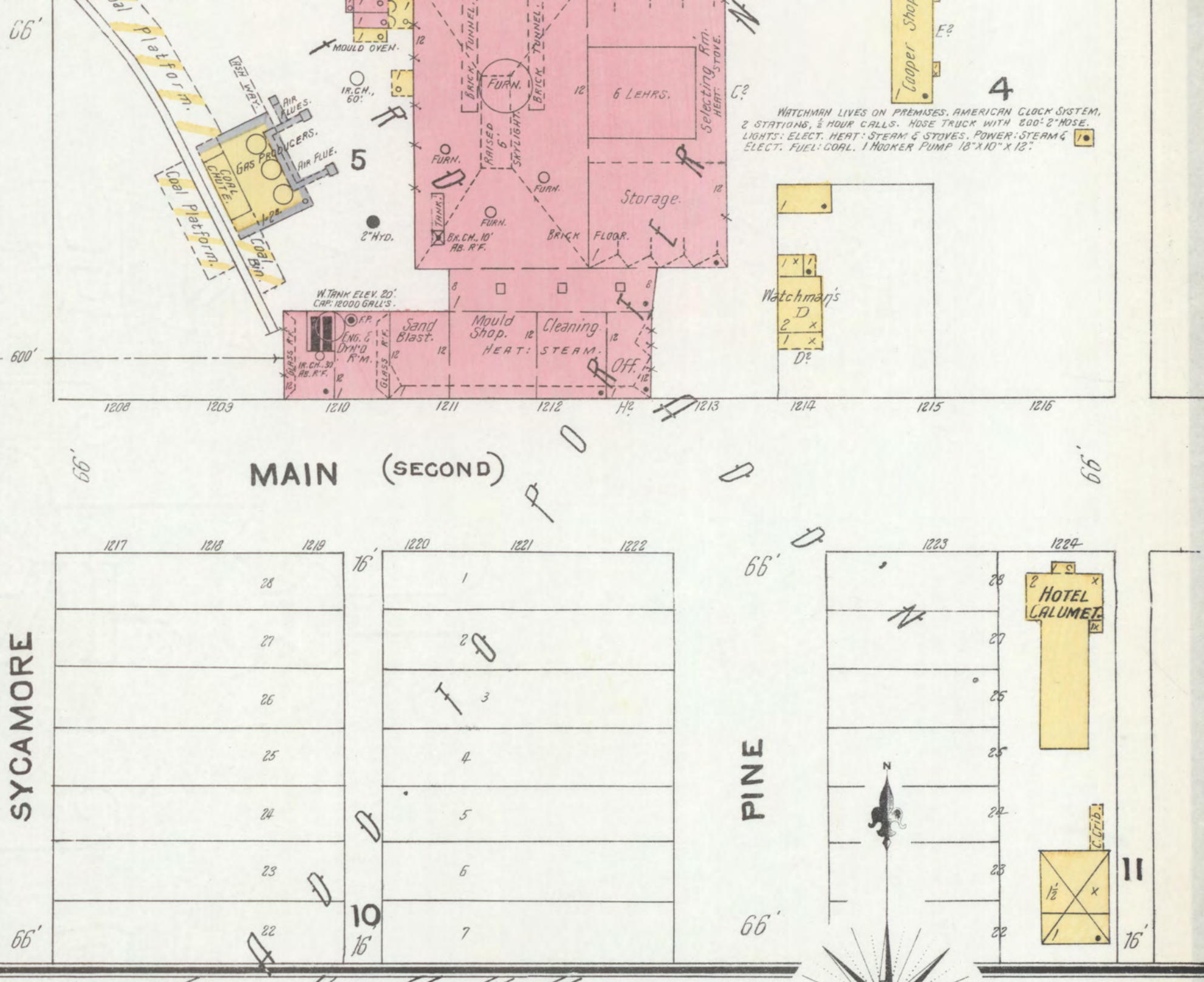
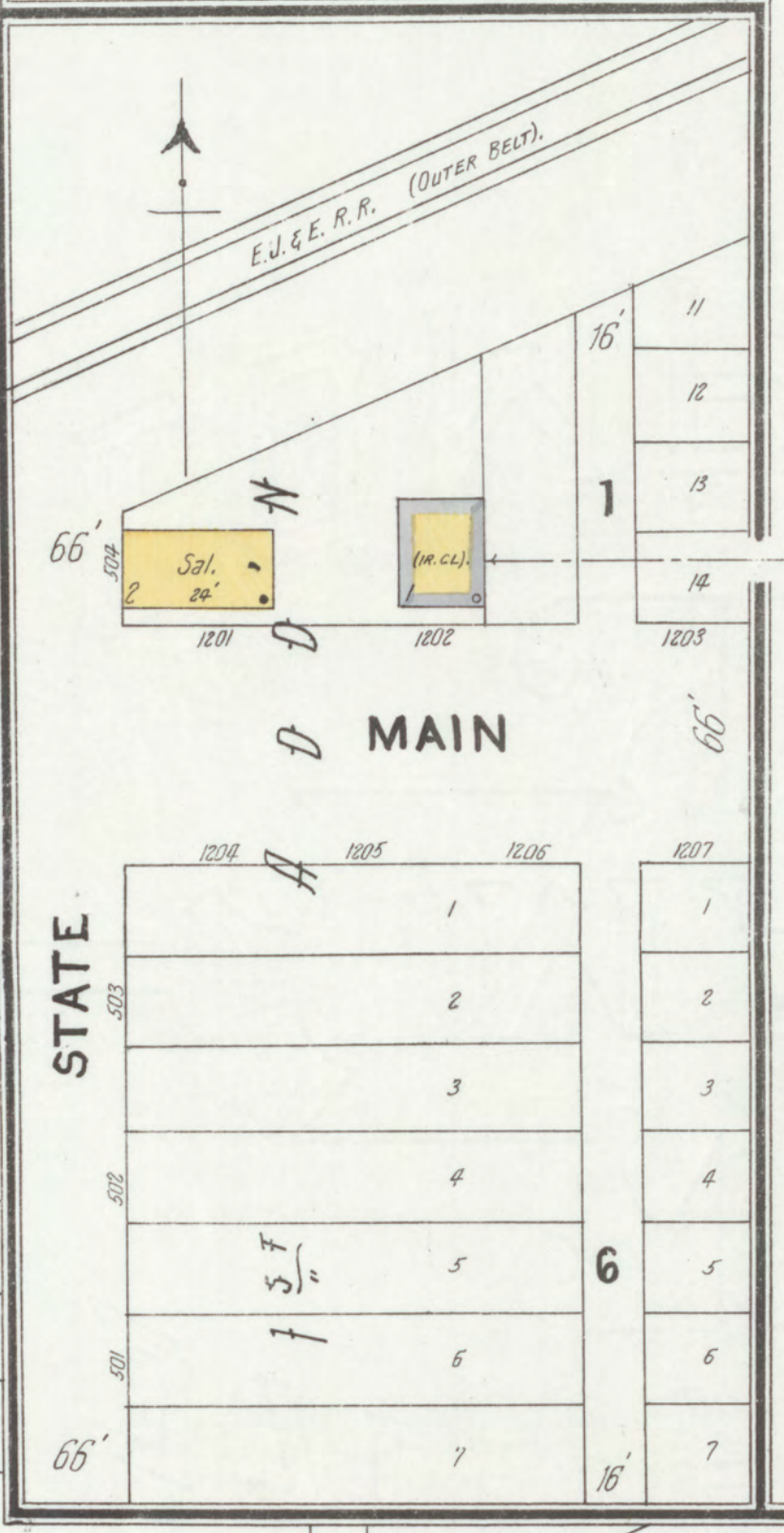
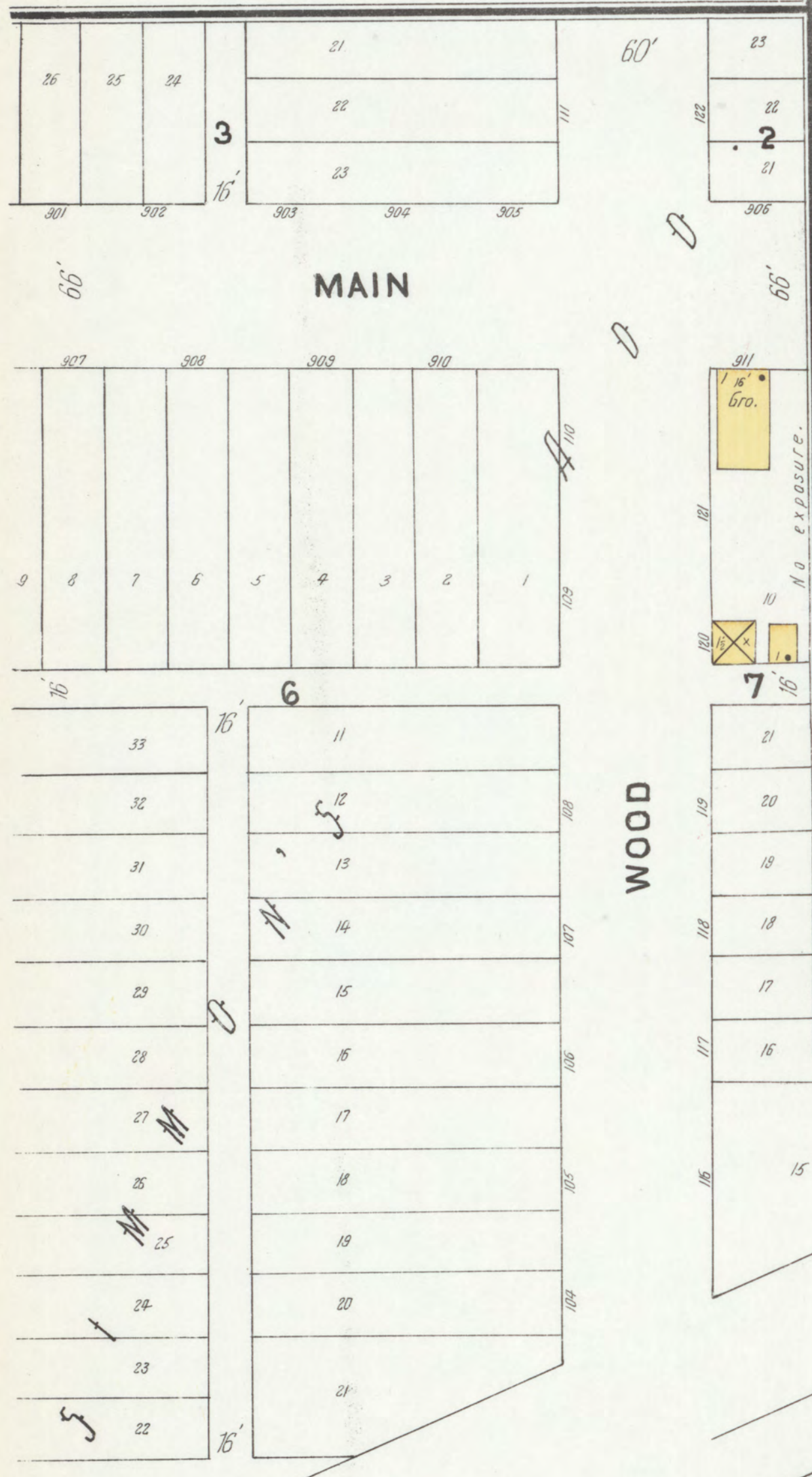
PORTER 4 AV.



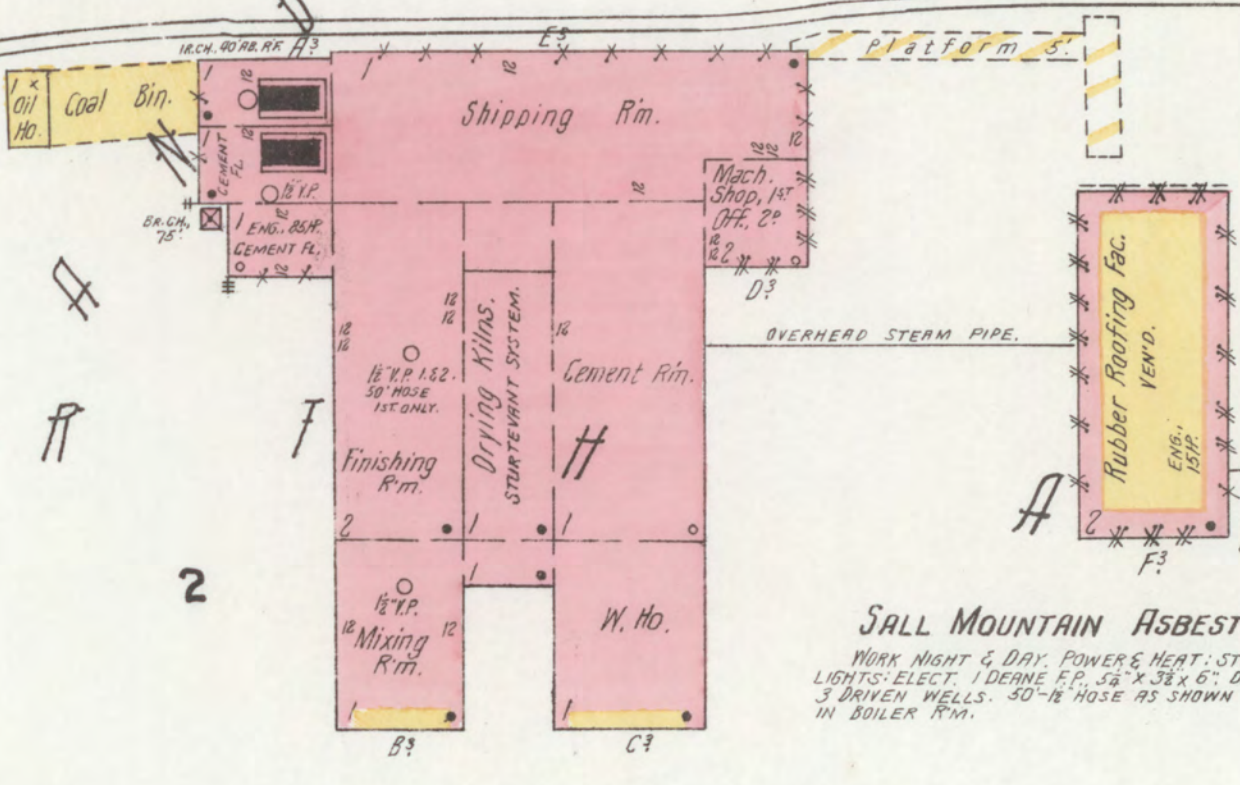
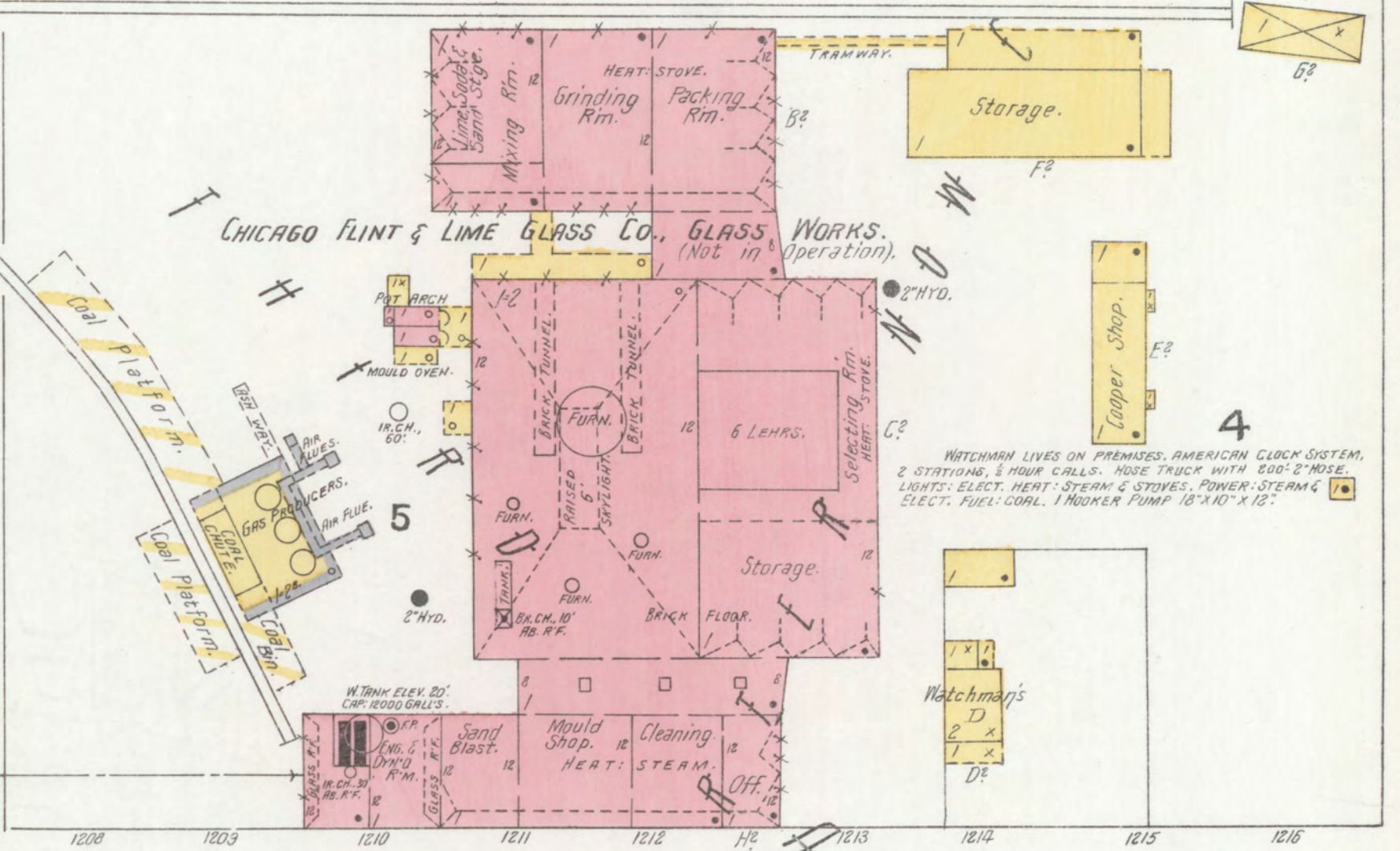
Map Division
Library of Congress



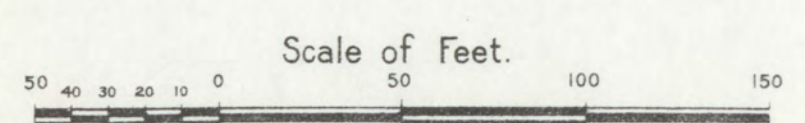
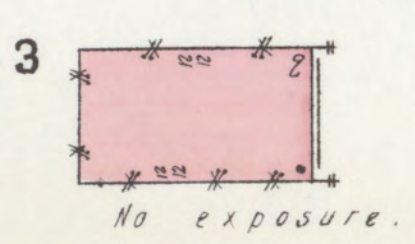
3/4 Mile N.E. of P.O.



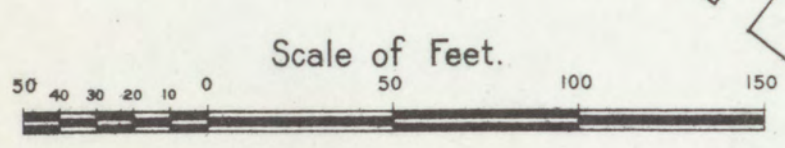
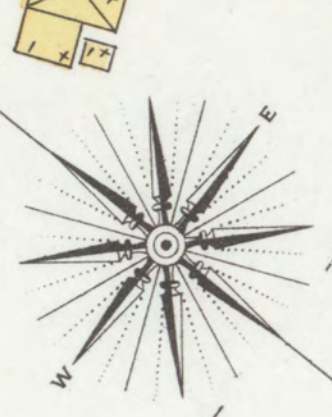
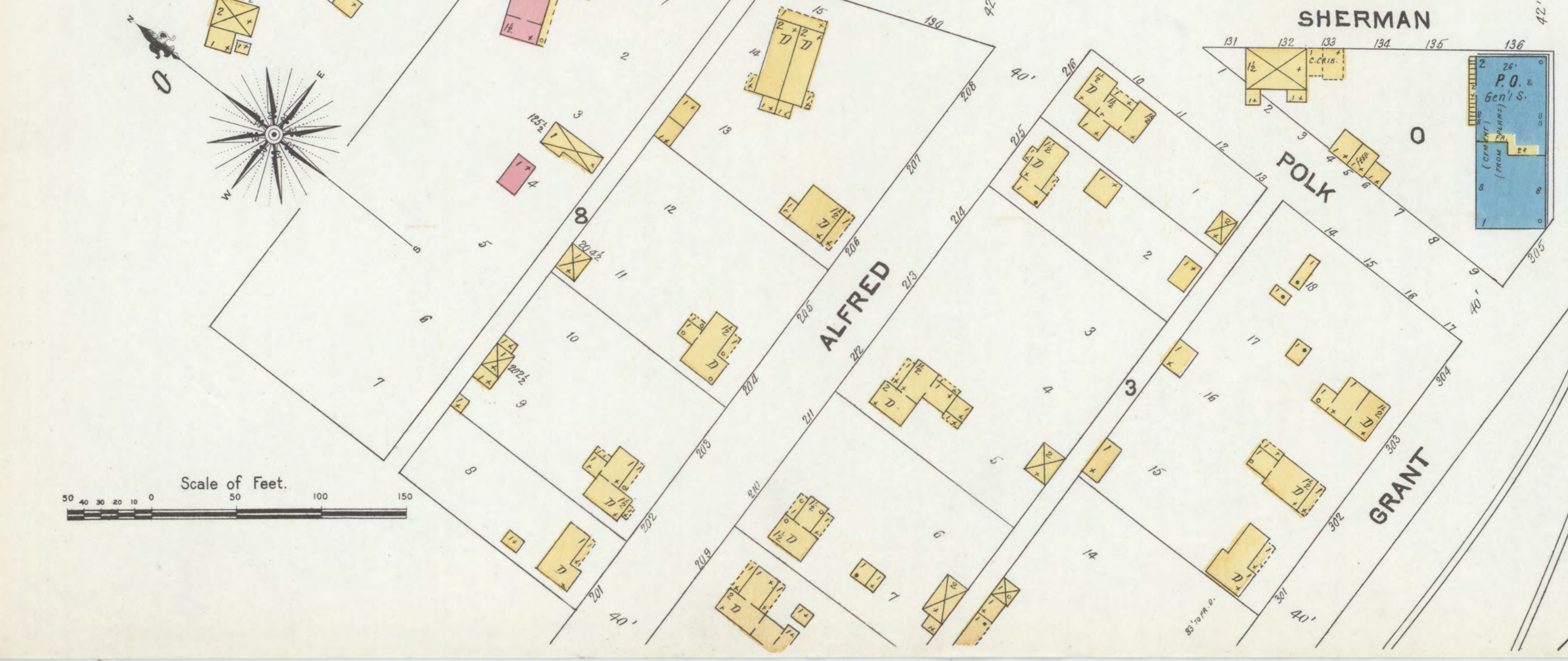
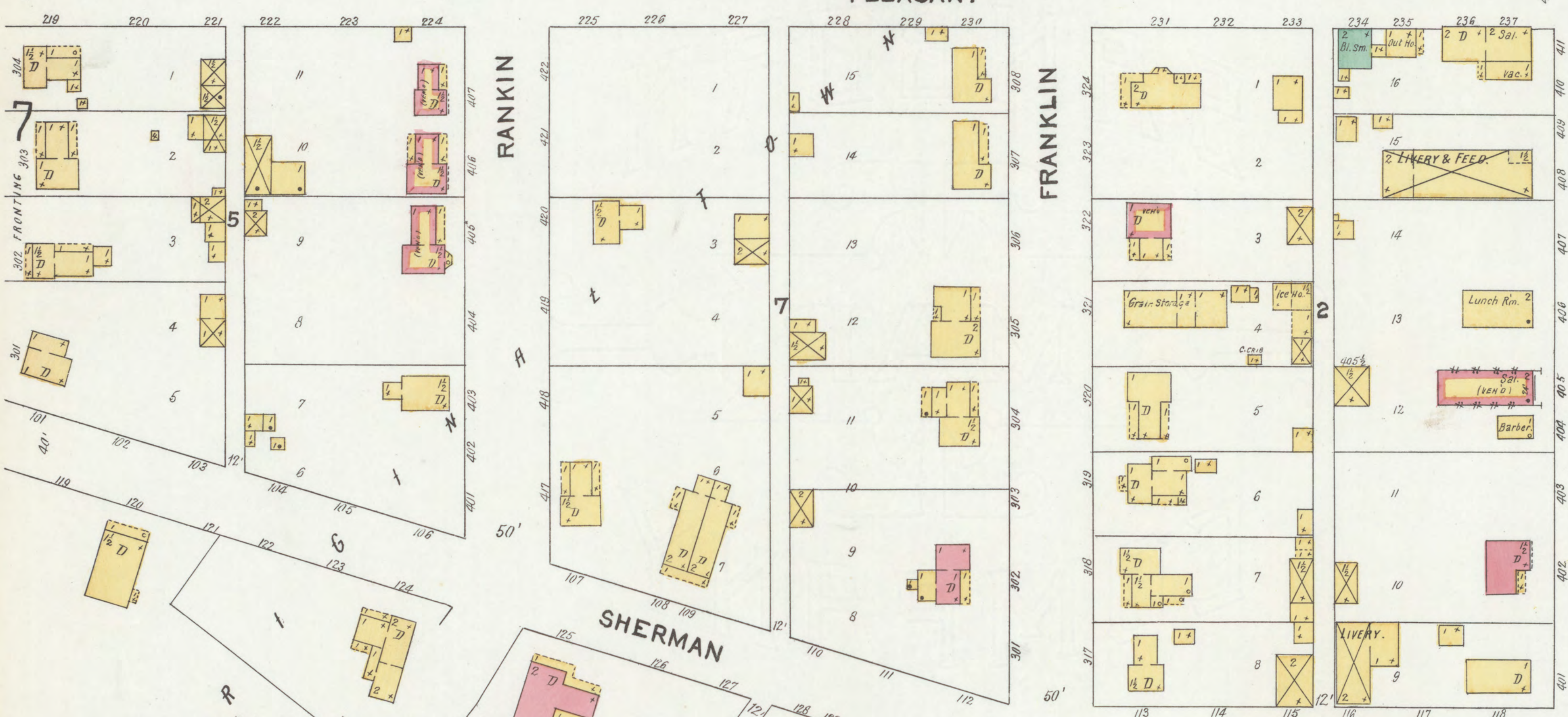
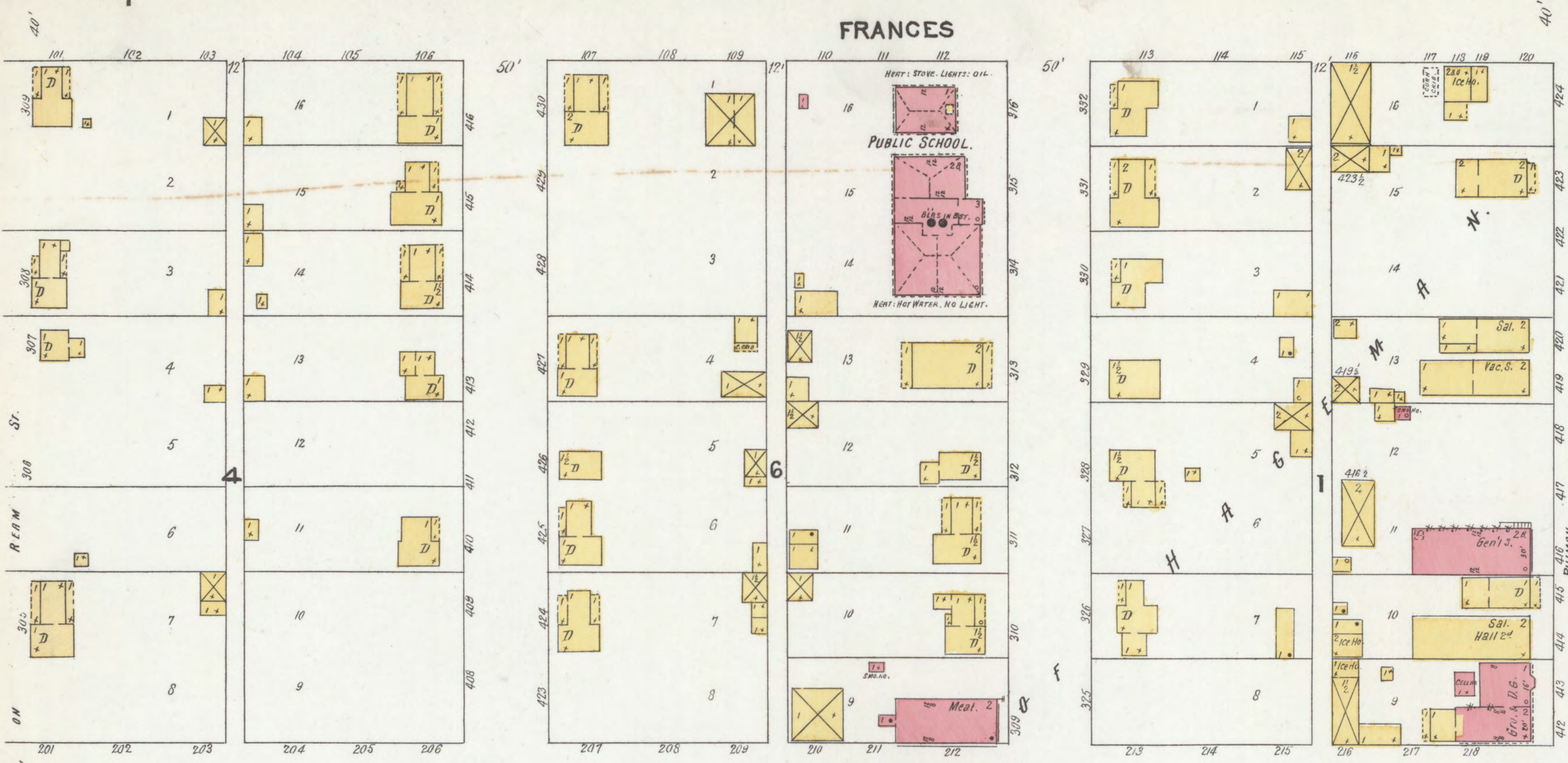
DEC. 1905
CHESTERTON
IND.



BUNNEL ACETYLENE GAS PLANT CO.
NO WATCHMAN. LIGHTS: GAS. NO HEAT.
NO POWER.



DEC. 1905
CHESTERTON
IND.
PORTER



INDIAN CENTRAL R. R.

FREIGHT DEPOT.

PASSENGER DEPOT.

