



WATER FACILITIES:

CHESTERTON AND PORTER. Gravity and direct pressure system. Gravity tank capacity 50,000 gals. elevated 76' 16" Gould triplex power pump 8 1/2" capacity 285 gals. per min. 1 Gould triplex power pump 8 1/2" capcy. 285 gals. per min. pumping from 30-2' driven wells. Gravity pressure 42 lbs. Daily consumption 70,000 gals. Winter 60,000 gals. in Summer 70,000 gals. 8" water mains 1/2 mi. in Chesterton 1907. Porter 1912. 2 miles added to Porter and Chesterton at various times since 1916. 21 D.H.s. in Porter 50 D. Hys. in Chesterton.

FIRE DEPT. CHESTERTON.

8 Volunteer firemen paid yearly salary for fire duty-1 Reutenberg motor truck with 1000' 2 1/2" C.R.L. hose in good condition. 2-40' ladders and 1-40 gal. chemical tank. 1 hand hose cart with 500' 2 1/2" C.R.L. hose-6000 condition. 5 fire alarm boxes as shown. Ringing bells in firemen's homes through telephone. Bell on engine house.

PORTER:

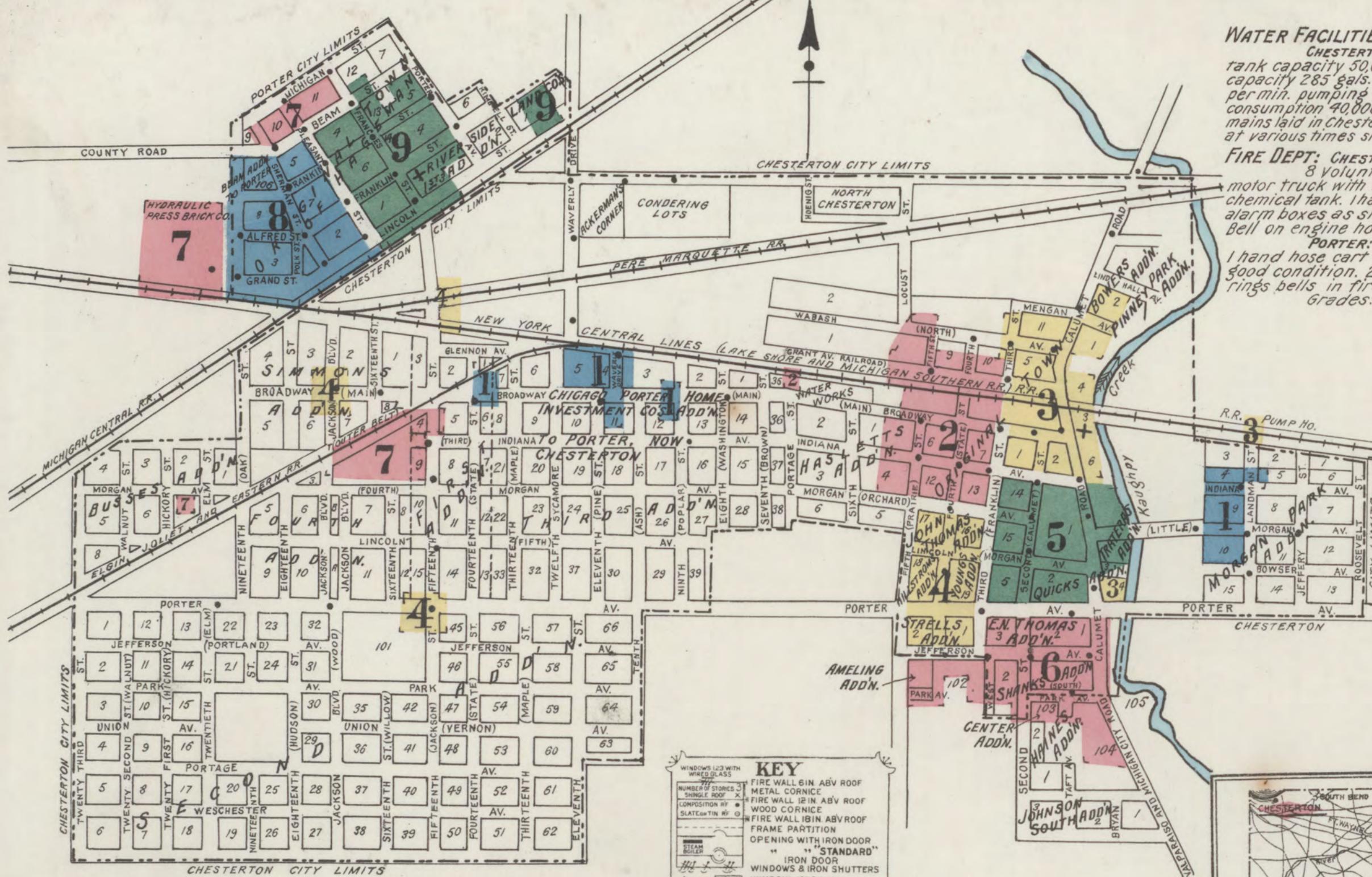
10 volunteer firemen paid yearly salary for fire duty. 1 hand hose cart with 1000' 2 1/2" C.R.L. hose-New. 150' 2 1/2" C.R.L. hose in reserve, in good condition. 2-28' extension ladders. Bell on engine house. F.A. system rings bells in firemen's homes. Telephone system. Grades: level. Streets: graded. Public lights: electric. No fire limits.

Map Division
APR 24 '22
Library of Congress

INCLUDING PORTER

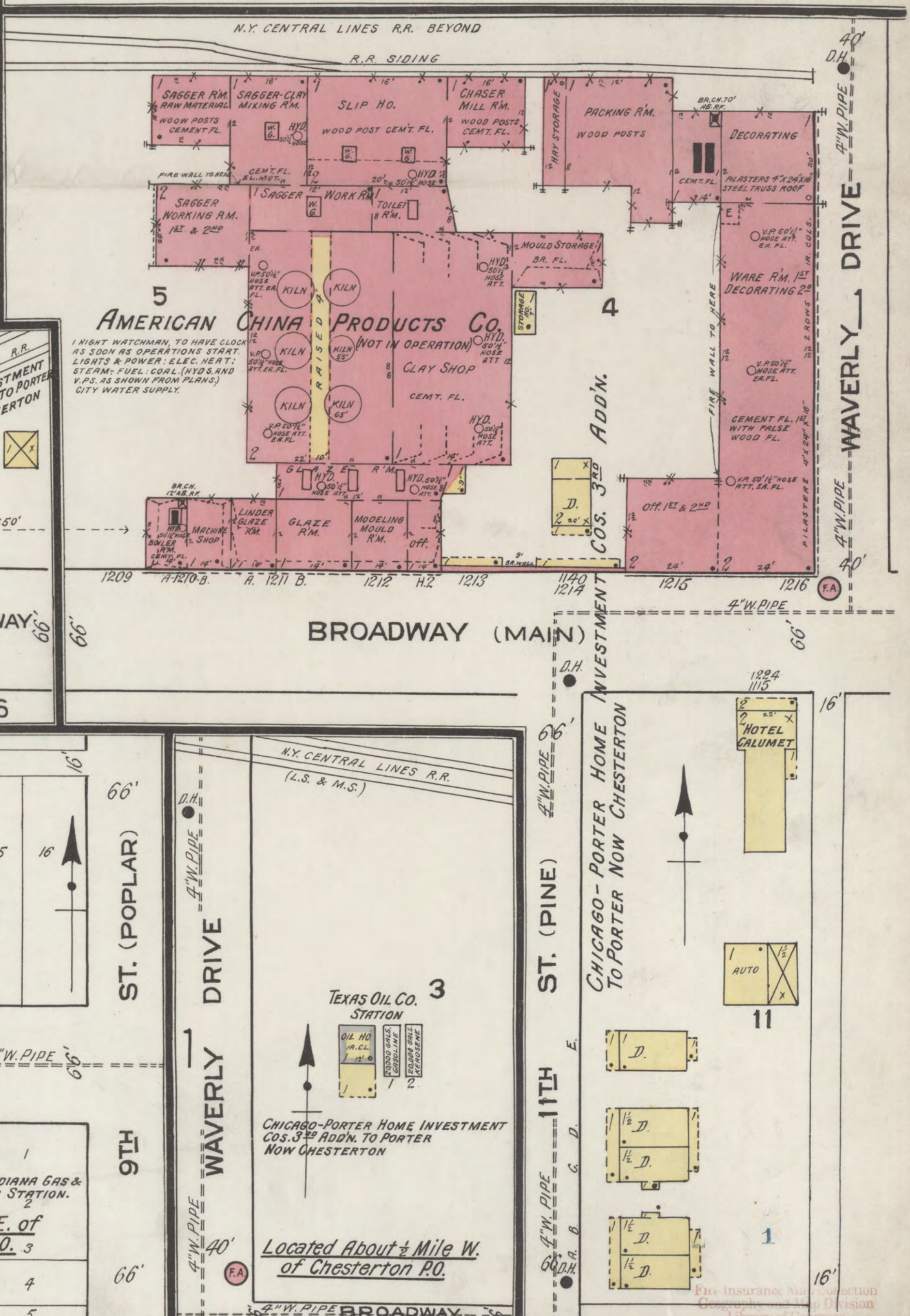
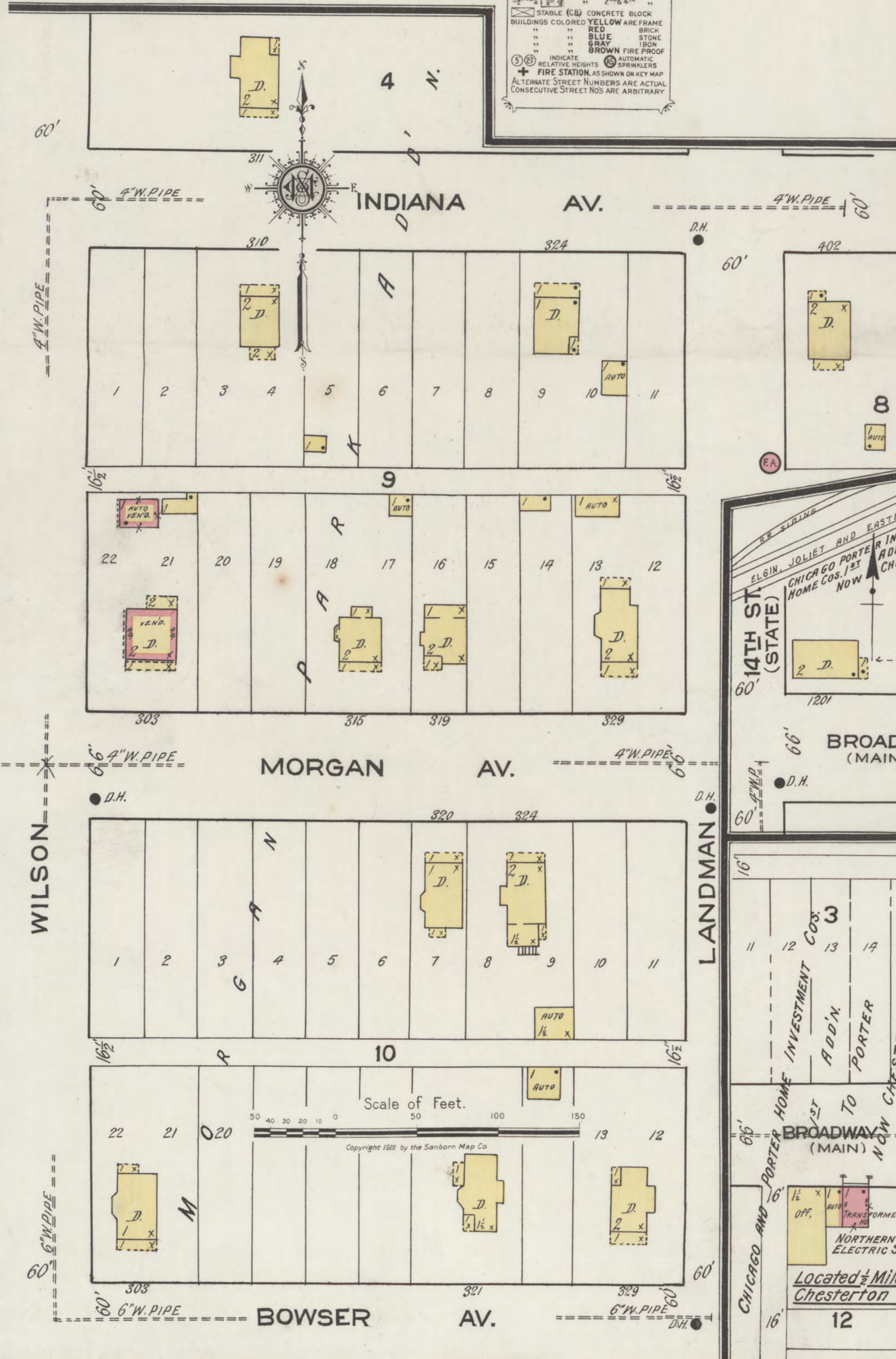
INDEX

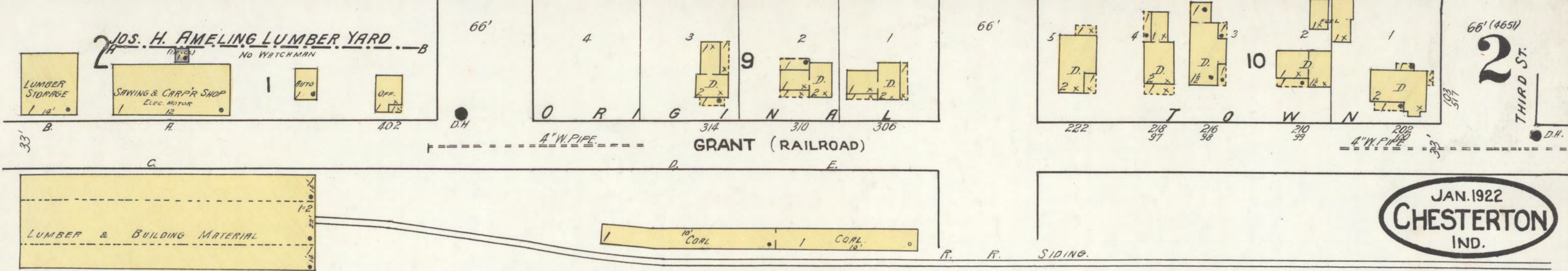
STREETS	SHEET	STREETS	SHEET	STREETS	SHEET
Alfred, at Porter, A	8	Indiana Ave., W. of Calumet Road:	9	Porter Ave., N.S. E. of Calumet Road:	9
Beam, at Porter, 101-116, arbitrary	7 100-222	9 at Porter,	9
Bowser Ave., 201-214	8 100-223	9	Prairie, see Fifth	9
Broadway, 201-214	8 100-224	9 201-225	9
..... 201-214	8 100-225	9 201-226	9
..... 201-214	8 100-226	9 201-227	9
..... 201-214	8 100-227	9 201-228	9
..... 201-214	8 100-228	9 201-229	9
..... 201-214	8 100-229	9 201-230	9
..... 201-214	8 100-230	9 201-231	9
..... 201-214	8 100-231	9 201-232	9
..... 201-214	8 100-232	9 201-233	9
..... 201-214	8 100-233	9 201-234	9
..... 201-214	8 100-234	9 201-235	9
..... 201-214	8 100-235	9 201-236	9
..... 201-214	8 100-236	9 201-237	9
..... 201-214	8 100-237	9 201-238	9
..... 201-214	8 100-238	9 201-239	9
..... 201-214	8 100-239	9 201-240	9
..... 201-214	8 100-240	9 201-241	9
..... 201-214	8 100-241	9 201-242	9
..... 201-214	8 100-242	9 201-243	9
..... 201-214	8 100-243	9 201-244	9
..... 201-214	8 100-244	9 201-245	9
..... 201-214	8 100-245	9 201-246	9
..... 201-214	8 100-246	9 201-247	9
..... 201-214	8 100-247	9 201-248	9
..... 201-214	8 100-248	9 201-249	9
..... 201-214	8 100-249	9 201-250	9
..... 201-214	8 100-250	9 201-251	9
..... 201-214	8 100-251	9 201-252	9
..... 201-214	8 100-252	9 201-253	9
..... 201-214	8 100-253	9 201-254	9
..... 201-214	8 100-254	9 201-255	9
..... 201-214	8 100-255	9 201-256	9
..... 201-214	8 100-256	9 201-257	9
..... 201-214	8 100-257	9 201-258	9
..... 201-214	8 100-258	9 201-259	9
..... 201-214	8 100-259	9 201-260	9
..... 201-214	8 100-260	9 201-261	9
..... 201-214	8 100-261	9 201-262	9
..... 201-214	8 100-262	9 201-263	9
..... 201-214	8 100-263	9 201-264	9
..... 201-214	8 100-264	9 201-265	9
..... 201-214	8 100-265	9 201-266	9
..... 201-214	8 100-266	9 201-267	9
..... 201-214	8 100-267	9 201-268	9
..... 201-214	8 100-268	9 201-269	9
..... 201-214	8 100-269	9 201-270	9
..... 201-214	8 100-270	9 201-271	9
..... 201-214	8 100-271	9 201-272	9
..... 201-214	8 100-272	9 201-273	9
..... 201-214	8 100-273	9 201-274	9
..... 201-214	8 100-274	9 201-275	9
..... 201-214	8 100-275	9 201-276	9
..... 201-214	8 100-276	9 201-277	9
..... 201-214	8 100-277	9 201-278	9
..... 201-214	8 100-278	9 201-279	9
..... 201-214	8 100-279	9 201-280	9
..... 201-214	8 100-280	9 201-281	9
..... 201-214	8 100-281	9 201-282	9
..... 201-214	8 100-282	9 201-283	9
..... 201-214	8 100-283	9 201-284	9
..... 201-214	8 100-284	9 201-285	9
..... 201-214	8 100-285	9 201-286	9
..... 201-214	8 100-286	9 201-287	9
..... 201-214	8 100-287	9 201-288	9
..... 201-214	8 100-288	9 201-289	9
..... 201-214	8 100-289	9 201-290	9
..... 201-214	8 100-290	9 201-291	9
..... 201-214	8 100-291	9 201-292	9
..... 201-214	8 100-292	9 201-293	9
..... 201-214	8 100-293	9 201-294	9
..... 201-214	8 100-294	9 201-295	9
..... 201-214	8 100-295	9 201-296	9
..... 201-214	8 100-296	9 201-297	9
..... 201-214	8 100-297	9 201-298	9
..... 201-214	8 100-298	9 201-299	9
..... 201-214	8 100-299	9 201-300	9



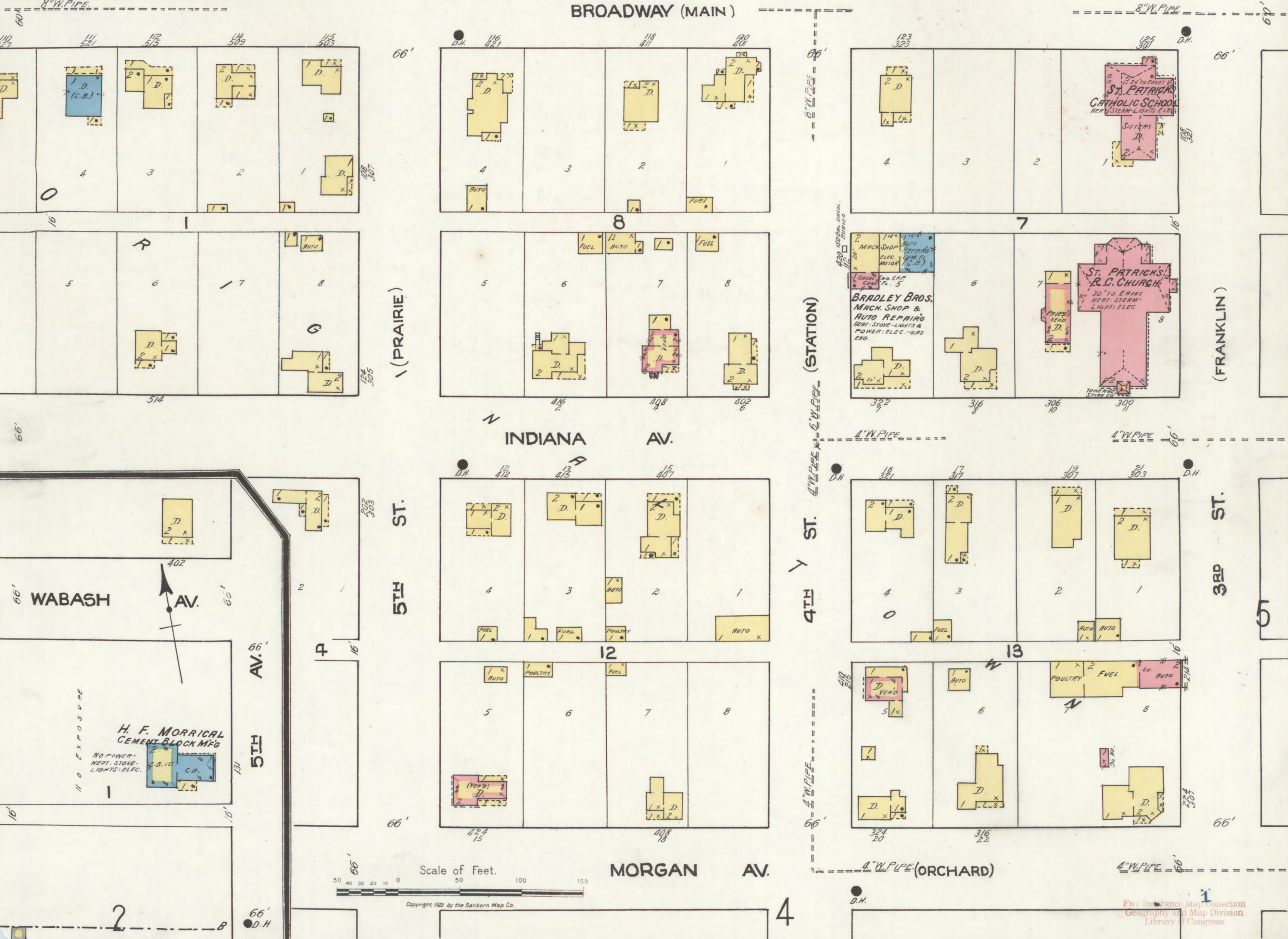
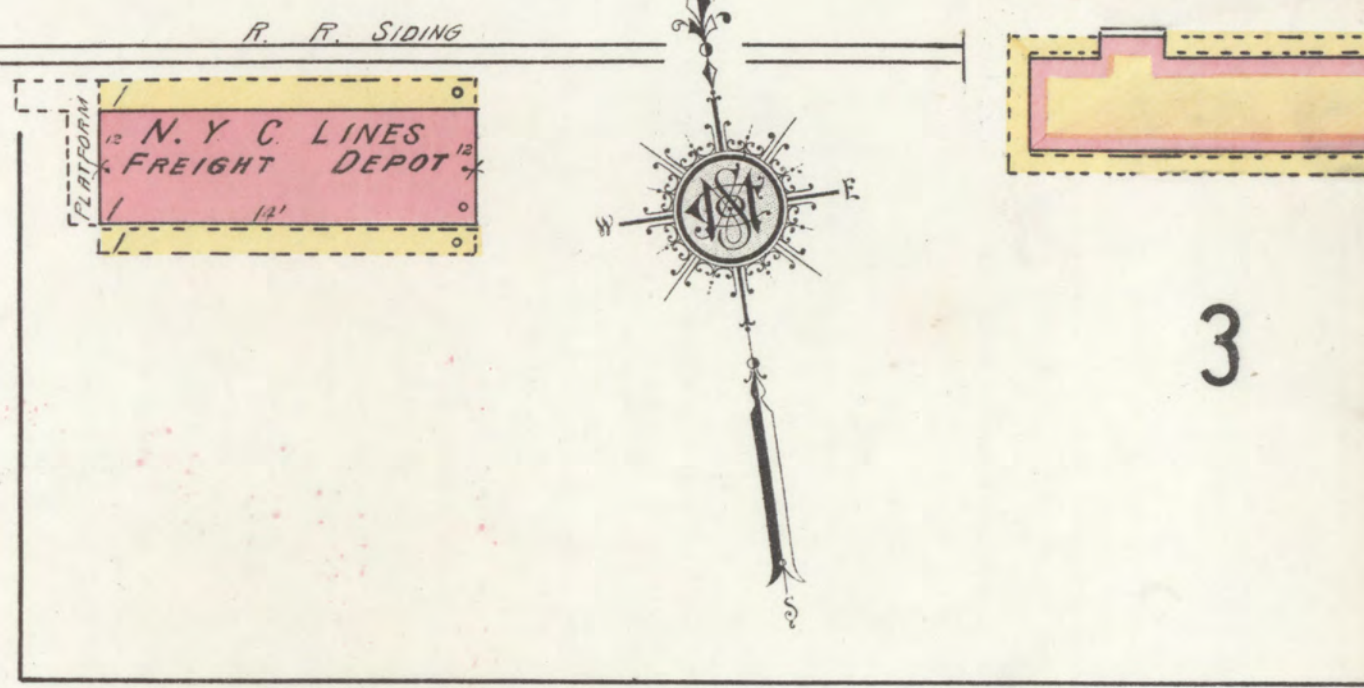
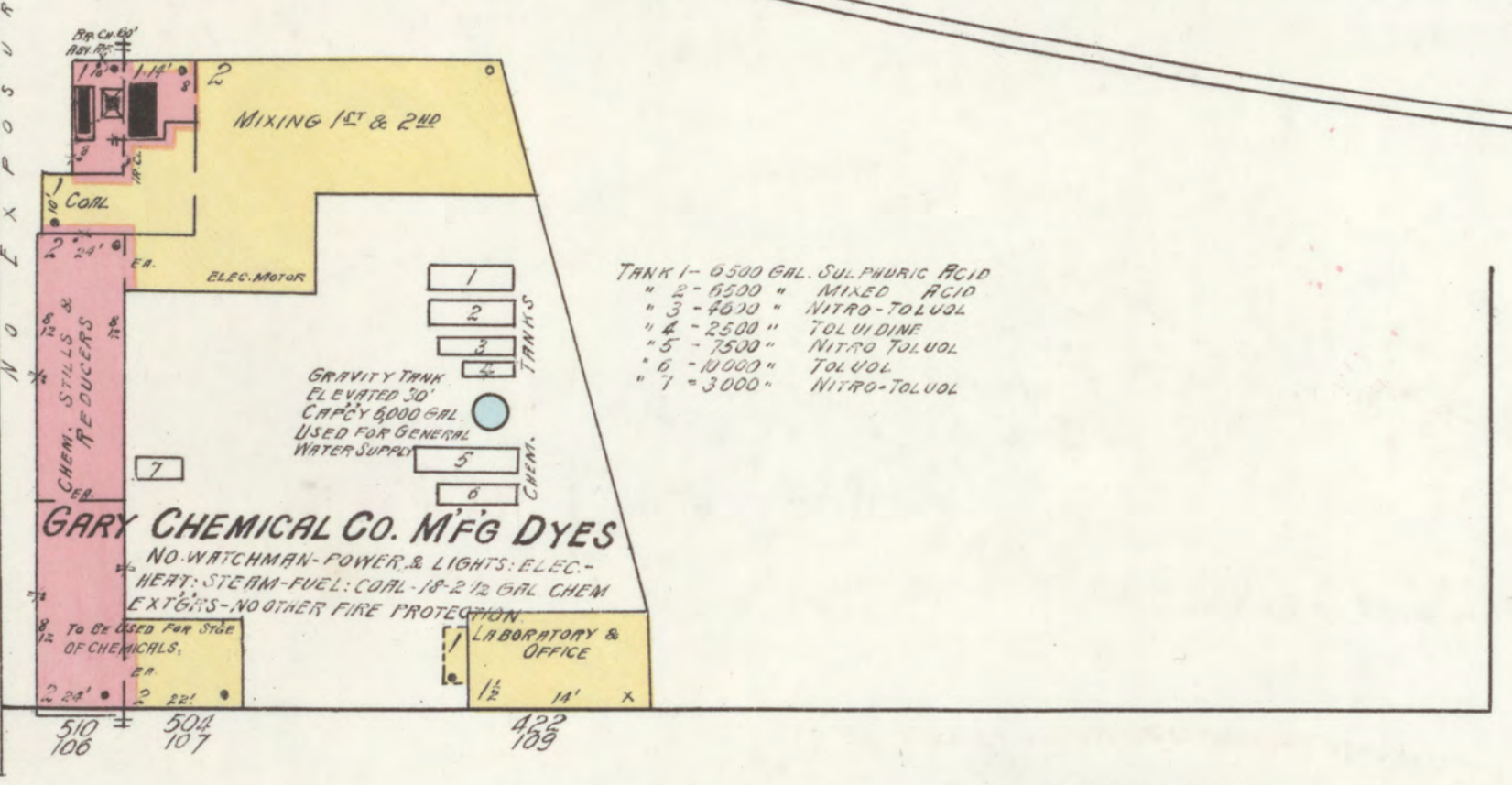
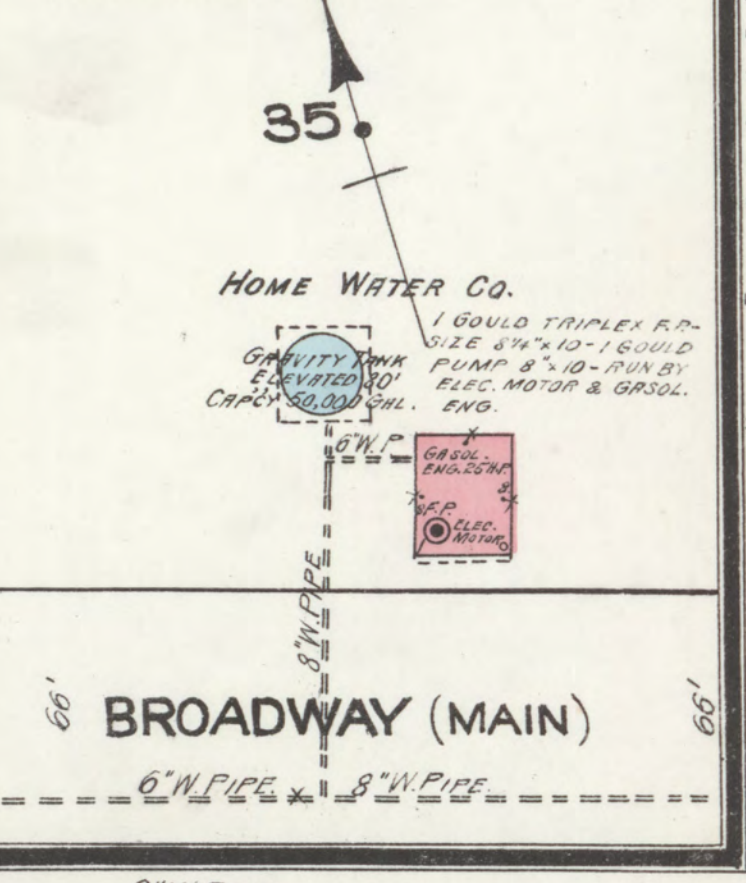
KEY

- FIRE WALL 6 IN. ASB. ROOF METAL CORNICE
- FIRE WALL 12 IN. ASB. ROOF WOOD CORNICE
- FIRE WALL 12 IN. ASB. ROOF FRAME PARTITION OPENING WITH IRON DOOR
- STANDARD
- IRON DOOR
- WINDOWS & IRON SHUTTERS
- WINDOW 1 1/2 STORY
- WINDOWS 1 1/2 & 3 1/2 STORIES
- 2 1/2" x 4 1/2"
- STABLE (C) CONCRETE BLOCK BUILDINGS COLORED YELLOW ARE FRAME
- RED BRICK
- BLUE STONE
- GRAY IRON
- BROWN FIRE PROOF
- INDICATE RELATIVE HEIGHTS
- AUTOMATIC SPRINKLERS
- FIRE STATION, AS SHOWN ON KEY MAP
- ALTERNATE STREET NUMBERS ARE ACTUAL CONSECUTIVE STREET NOS ARE ARBITRARY

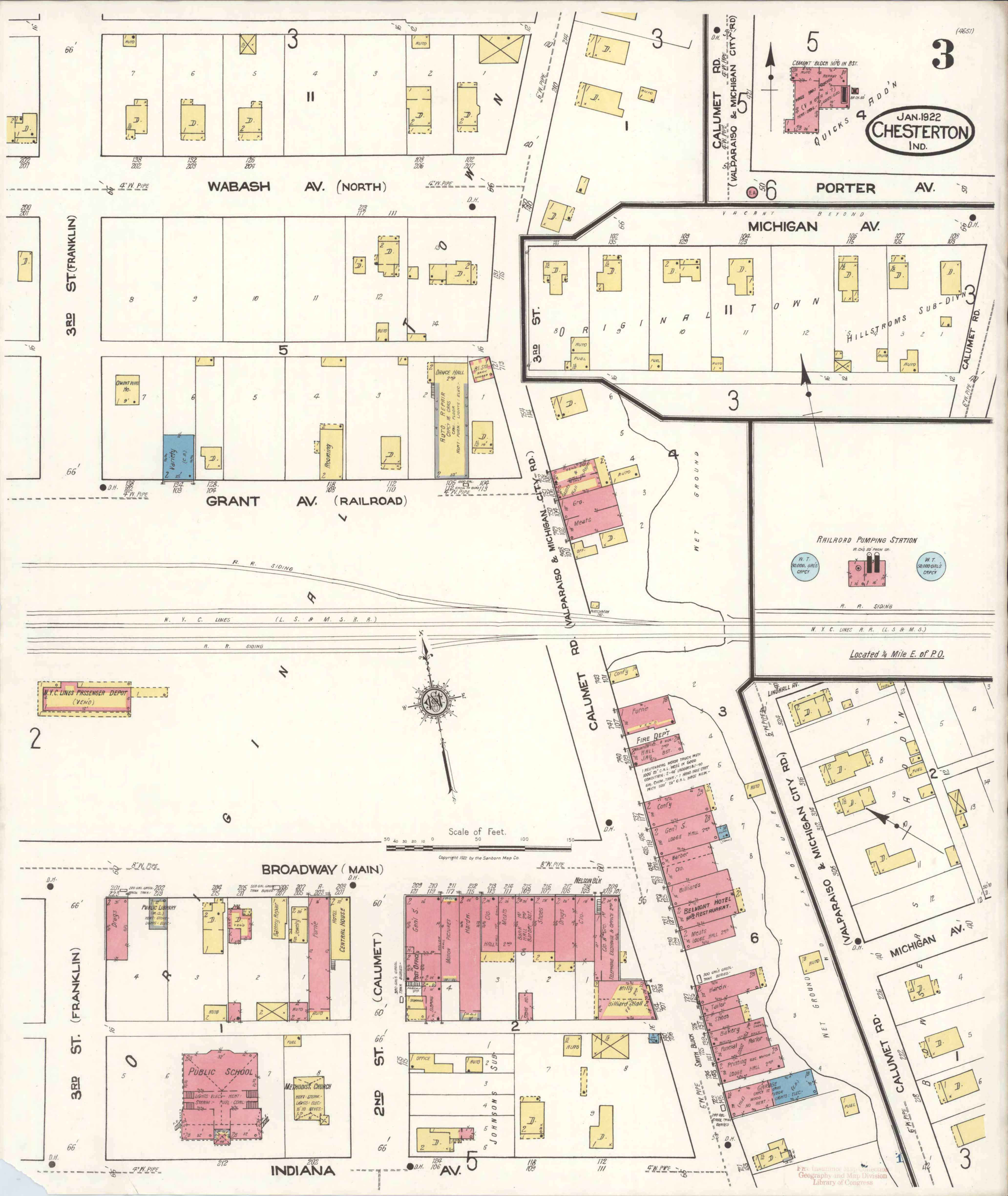




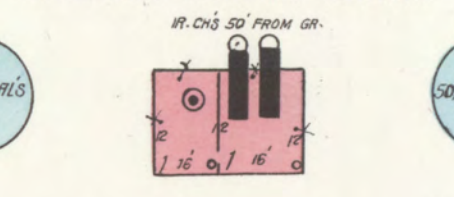
CHICAGO-PORTER HOME INVESTMENTS CO'S. THIRD ADDN TO PORTER NOW CHESTERTON.



JAN. 1922
CHESTERTON
IND.



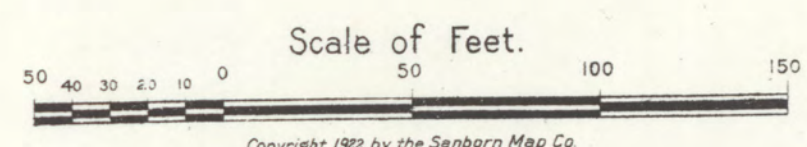
RAILROAD PUMPING STATION

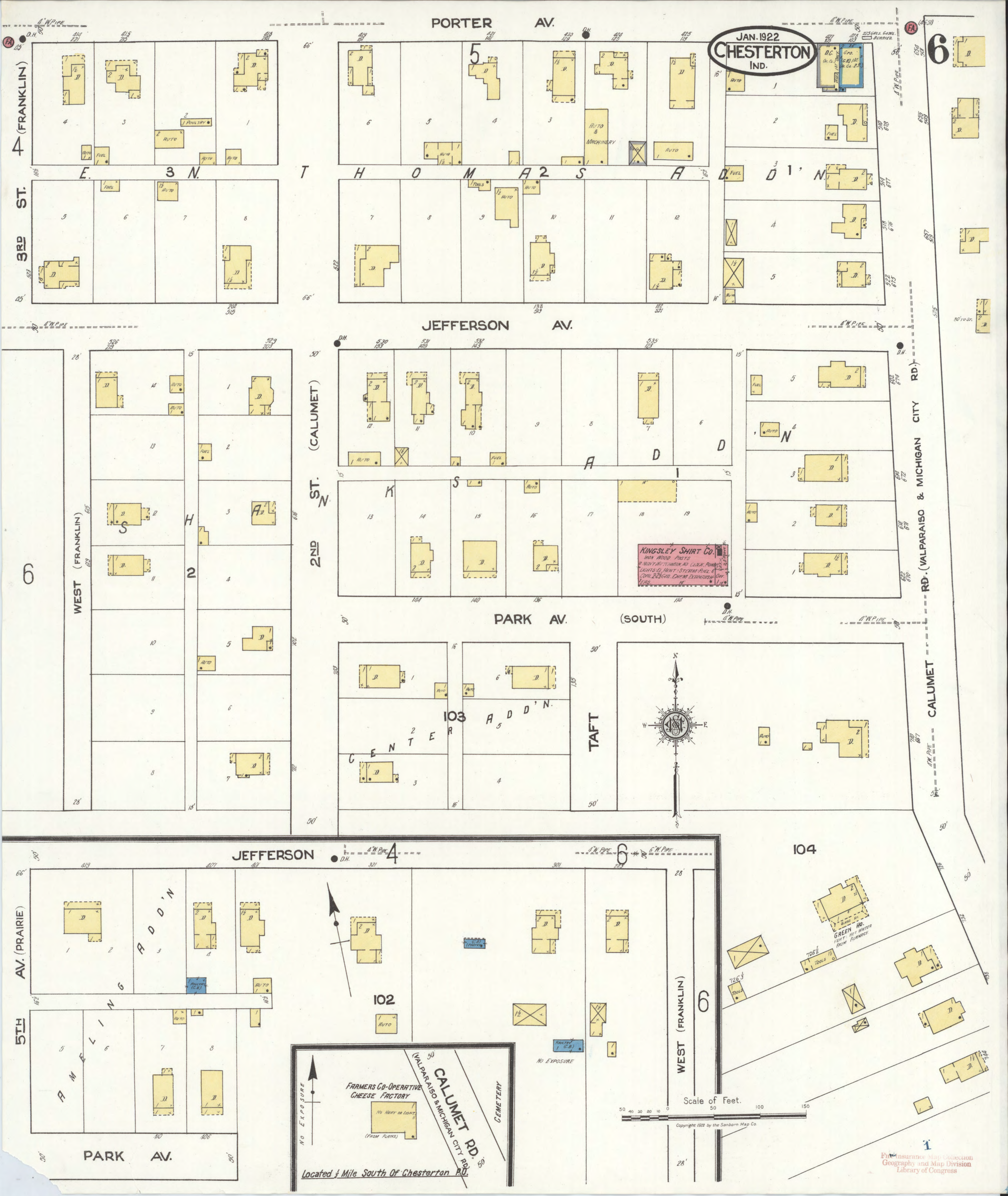


Located 1/4 Mile E. of P.O.

Scale of Feet.

Copyright 1922 by the Sanborn Map Co.





JAN. 1922
CHESTERTON
IND.

6

PORTER AV.

4 (FRANKLIN)
3RD ST.

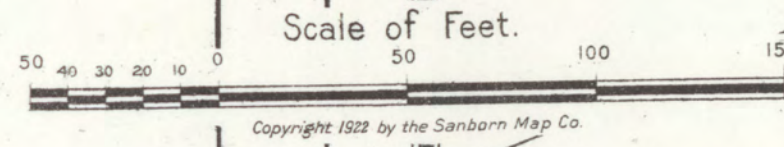
T H O M A S A 2 S A

JEFFERSON AV.

(CALUMET)
2ND ST. N

PARK AV. (SOUTH)

RD. (VALPARAISO & MICHIGAN CITY RD.)
CALUMET



102
FARMERS CO-OPERATIVE
CHEESE FACTORY
No. 102 or 103
(FROM PLANS)
CALUMET RD. 15'
(VALPARAISO & MICHIGAN CITY RD.)
CEMETERY
Located 1/4 Mile South Of Chesterton Rd.

104
GREEN HO.
HEAT: HOT WATER
FROM PLANT

726 1/2
726 3/4
726 1/2
726 3/4

726 1/2
726 3/4
726 1/2
726 3/4

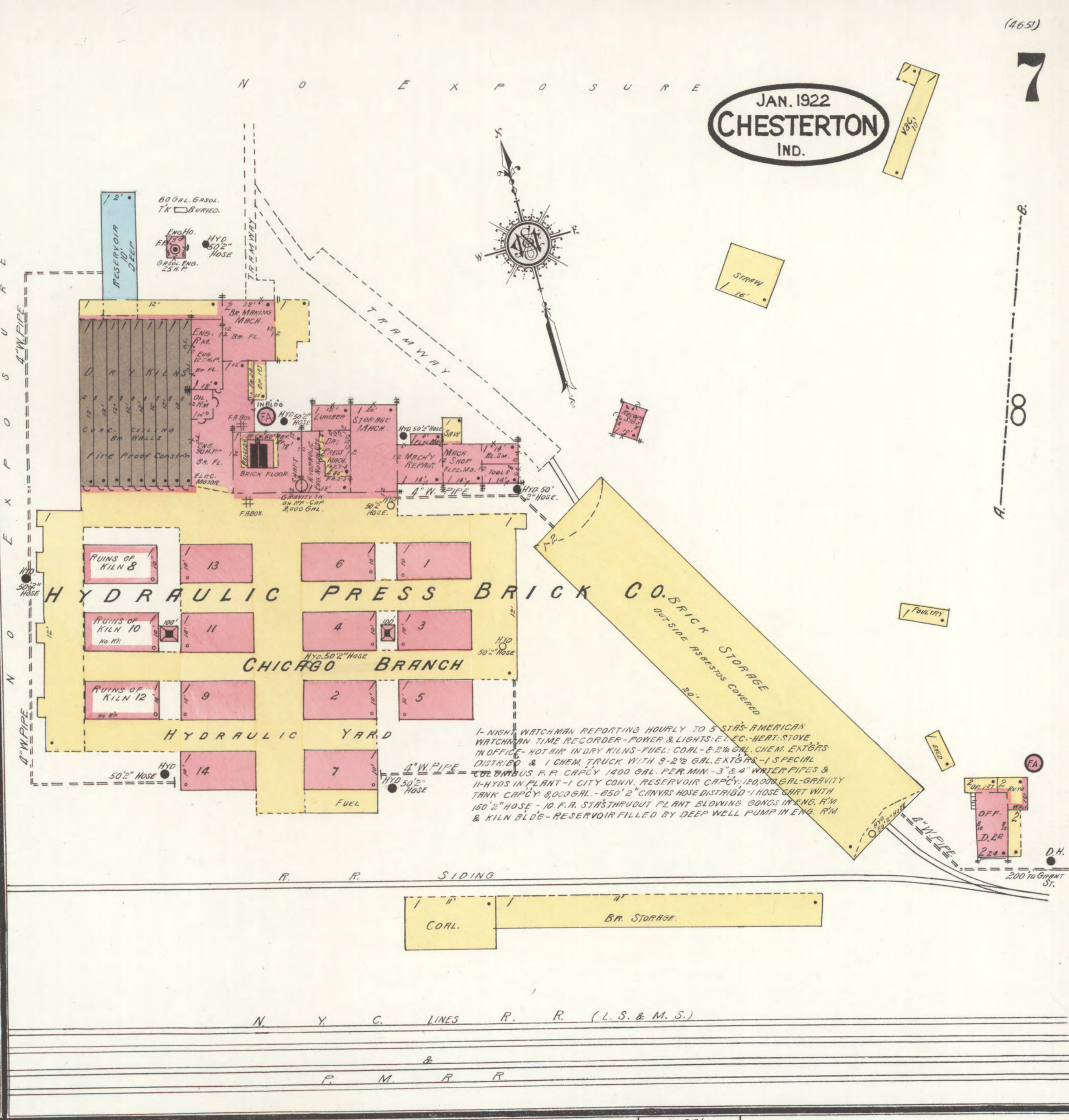
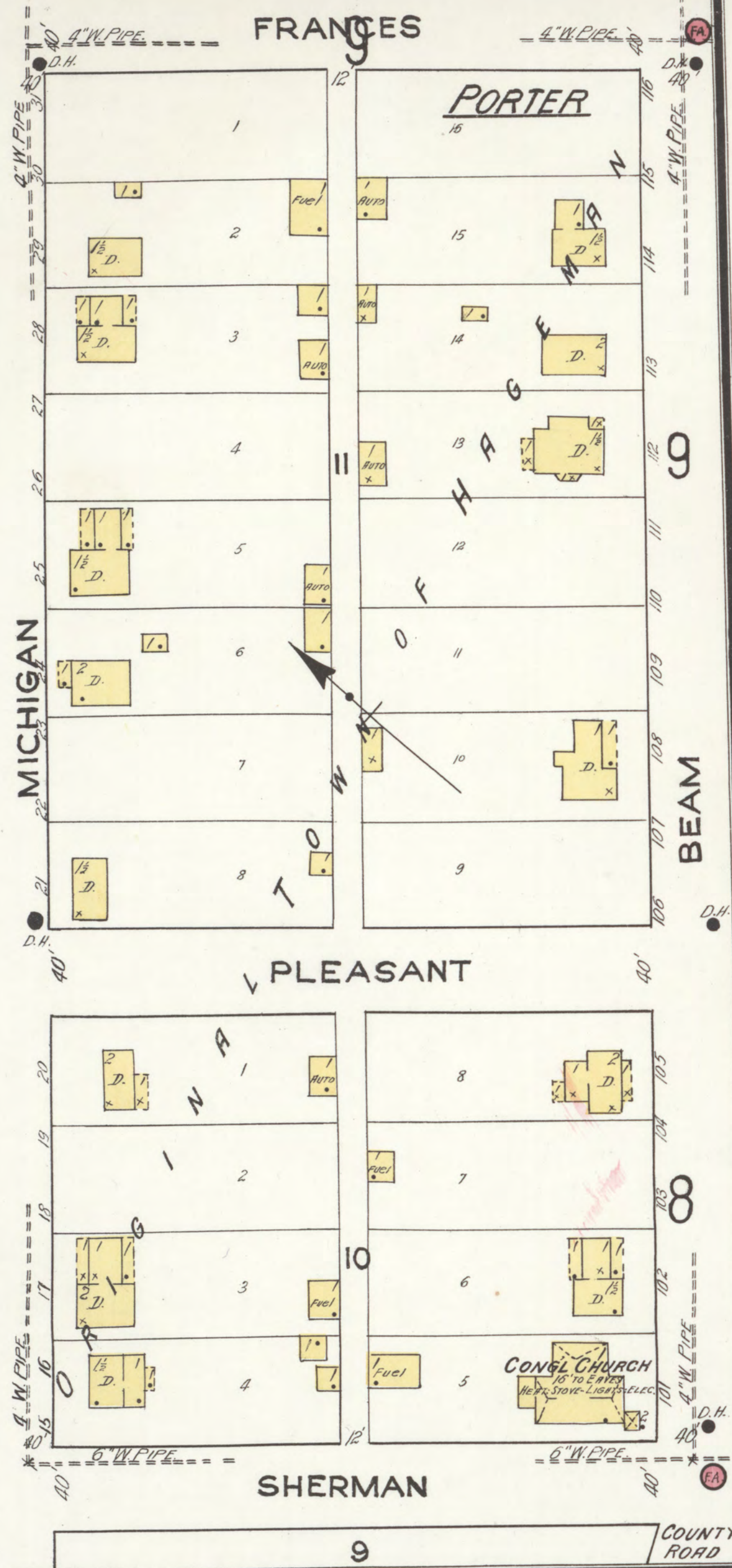
726 1/2
726 3/4
726 1/2
726 3/4

726 1/2
726 3/4
726 1/2
726 3/4

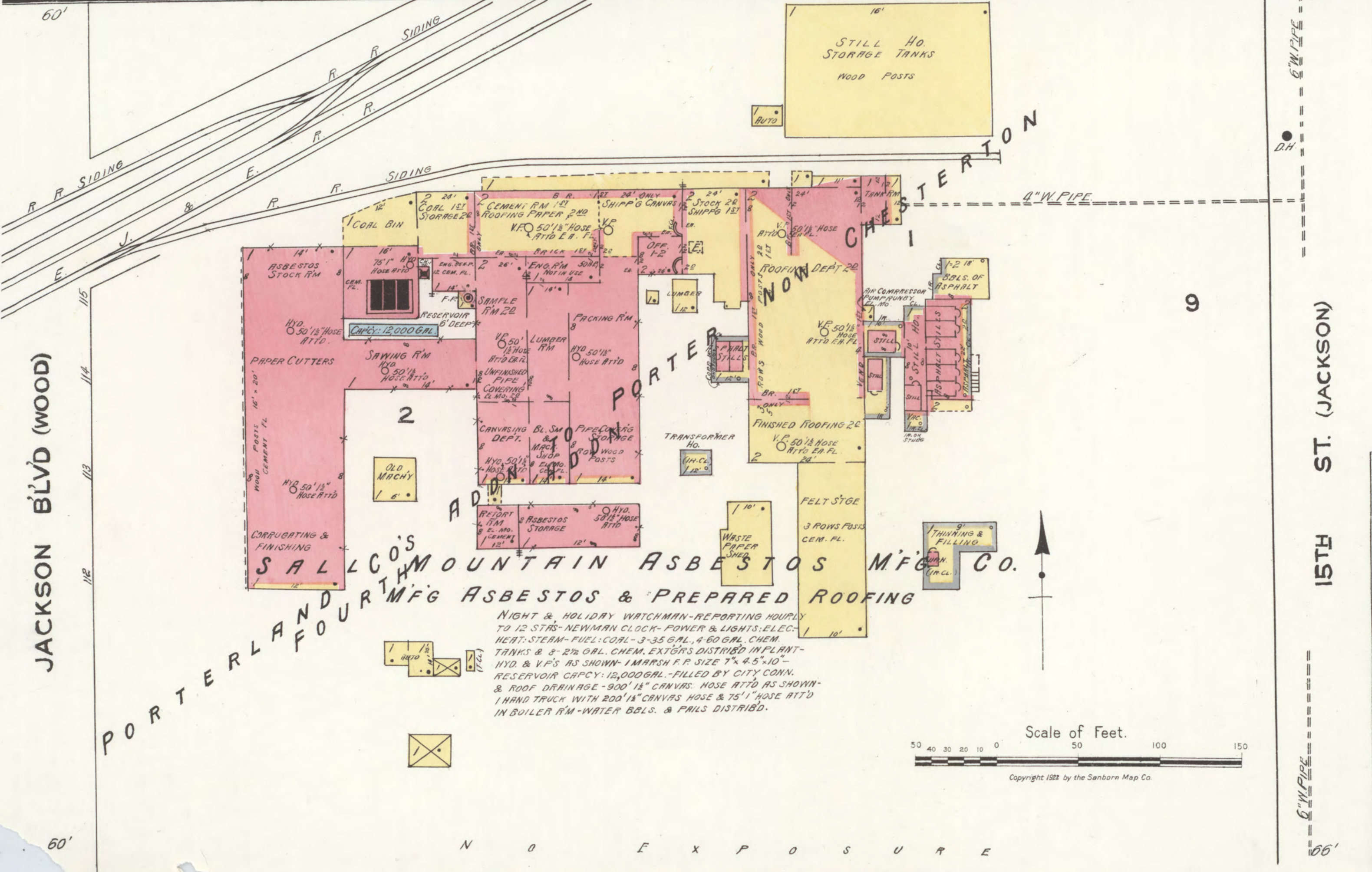
726 1/2
726 3/4
726 1/2
726 3/4

726 1/2
726 3/4
726 1/2
726 3/4

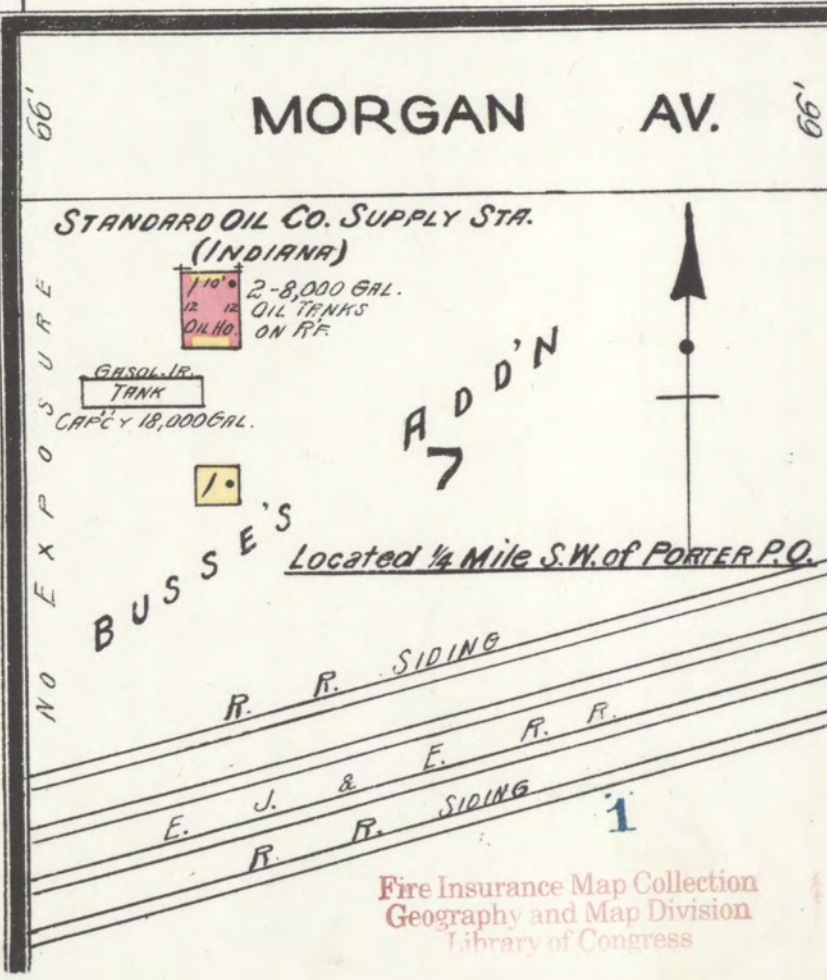
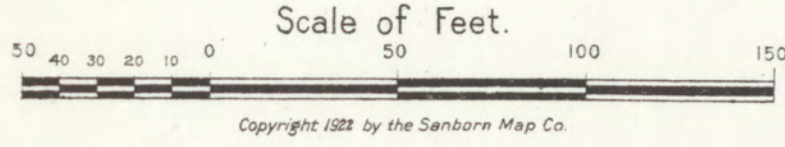
JAN. 1922
CHESTERTON
IND.



1-NIGHT WATCHMAN REPORTING HOURLY TO 5 STAS-AMERICAN WATCHMAN TIME RECORDER-POWER & LIGHTS-ELEC-HEAT-STOVE IN OFFICE-40T AIR IN DRY KILNS-FUEL-COAL-8-2% OIL-CHEM. EXT'ORS DISTRI'G & 1 CHEM. TRUCK WITH 8-2% GAL. EXT'ORS-1 SPECIAL DISTRIBUTOR P. P. CAPCY 1400 GAL PER MIN-3' & 4' WATER PIPES & 11-HYDS IN PLANT-1 CITY CONN. RESERVOIR CAPCY 12,000 GAL-GRAVITY TANK CAPCY 8,000 GAL.-850' 2" CANVAS HOSE DISTRI'G-1 HOSE SHRT WITH 150' 2" HOSE-10 F.R. STAS THRU OUT PLANT BLOWING GONGS IN ENG. RM & KILN BLDG-RESERVOIR FILLED BY DEEP WELL PUMP IN ENG. RM



NIGHT & HOLIDAY WATCHMAN-REPORTING HOURLY TO 12 STAS-NEWMAN CLOCK-POWER & LIGHTS-ELEC-HEAT-STEAM-FUEL-COAL-3-35 GAL.-4-60 GAL. CHEM. TANKS & 8-2% OIL-CHEM. EXT'ORS DISTRI'G IN PLANT-HYD. & V.F.'S AS SHOWN-1 MARSH F.P. SIZE 7'x4.5'x10'-RESERVOIR CAPCY 12,000 GAL.-FILLED BY CITY CONN. & ROOF DRAINAGE-900' 1 1/2" CANVAS HOSE ATTD AS SHOWN-1 HAND TRUCK WITH 200' 1 1/2" CANVAS HOSE & 75' 1 1/2" HOSE ATTD IN BOILER RM-WATER BOLS. & PAILS DISTRI'G.



Located 1/2 Mile N.W. of Porter P.O.

NO EXPOSURE

COUNTY RD

SWEDISH EVANG. LUTHERAN APOSTOLIC CHURCH
20' TO BARR. -
WENT OUT AIR, LIGHTS, ETC.

FUEL

CEMETERY

NO EXPOSURE.



7
100' TO OFFICE.
HYDRAULIC PRESS
BRICK CO.

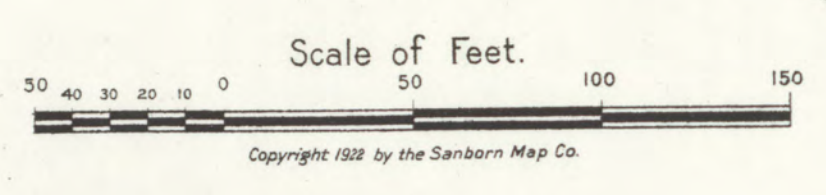
GRANT

(C.R. SIDING TO HYDRAULIC PRESS BRICK CO.)

M. Y. C. LINES P. R.

P. M. B. R.

(C. S. & M. S.)



M. C. R. R. PASSENGER DEPOT

PLATFORM
M. C. R. R. FREIGHT HO.

COAL

W. T. ELEVATOR

