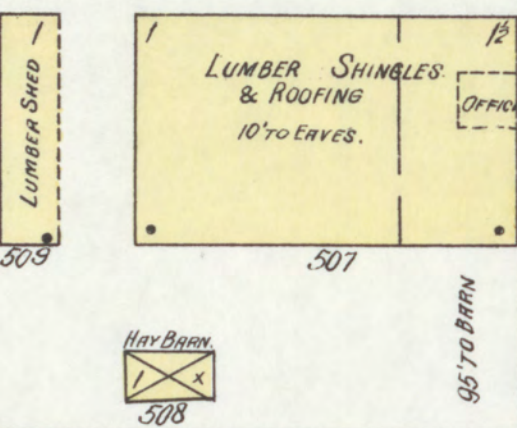




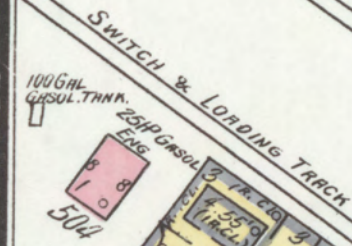
SEPT. 1909.  
HEBRON  
IND.

Located 1/2 Mile N.W. of P.O.

HENDERSON BROS LUMBER CO.  
NO WATCHMAN - NO FIRE APPARATUS.



ROAD  
NOT MARKED

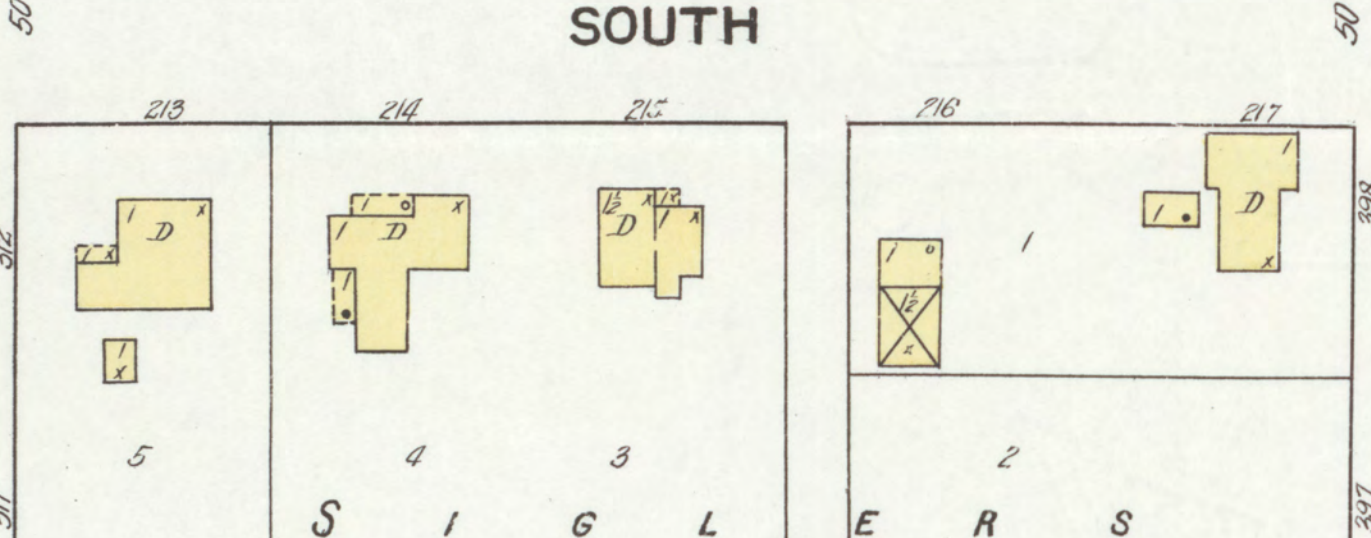
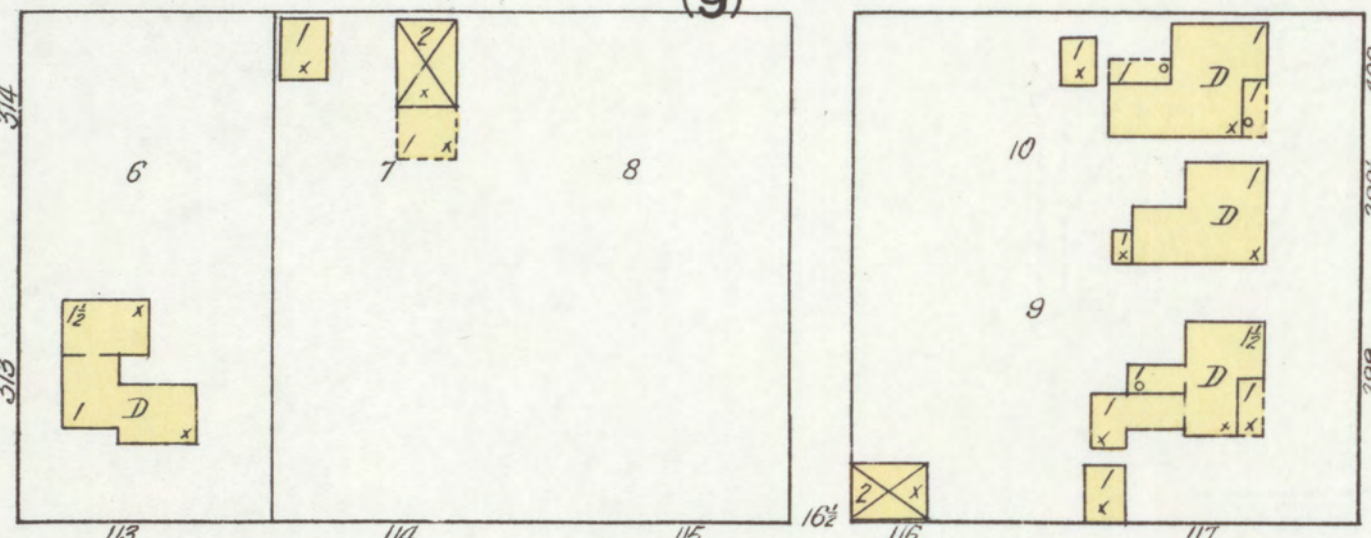
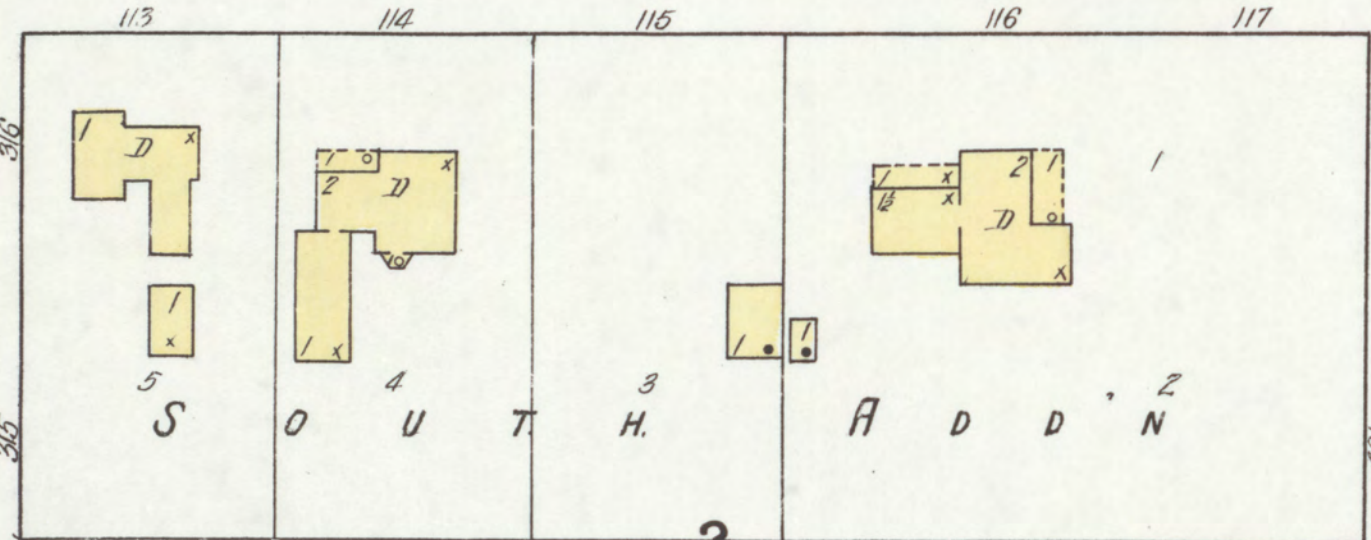


M. J. BROWN ELEVATOR.  
NO WATCHMAN  
MACHINERY  
12' CLEARANCE  
24' CORN SHELLER

Located 3/8 Mile N.W. of P.O.

2

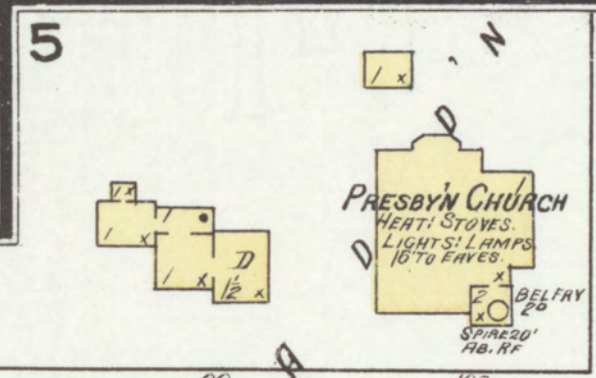
CHURCH



SOUTH

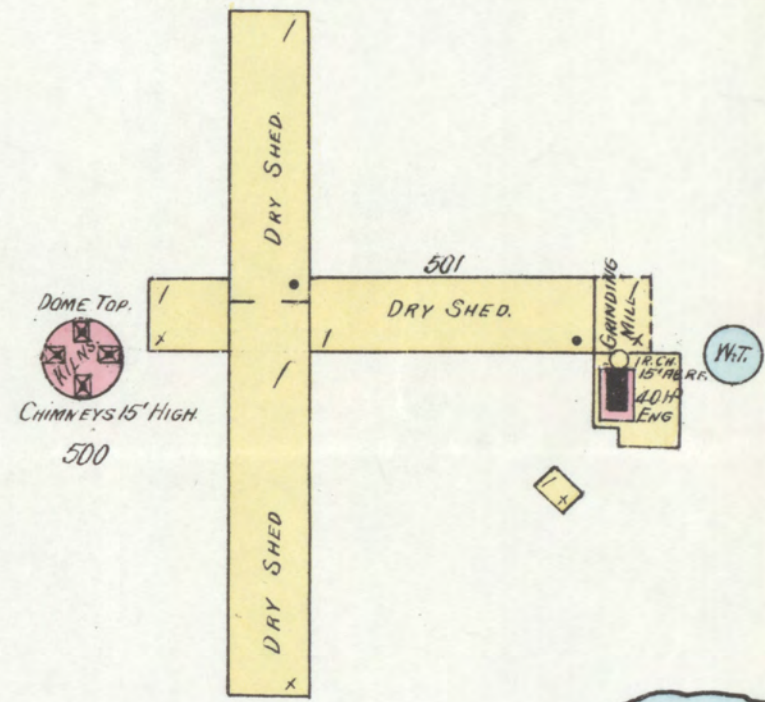
MAIN

COUNCIL ADDN



CHURCH

HEBRON CLAY WORKS  
NO WATCHMAN - NO FIRE APPARATUS -  
POWER - STEAM - FUEL COAL.

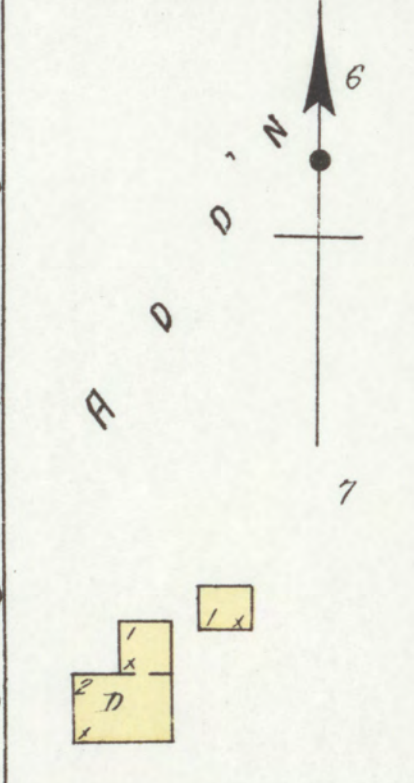


Located 1 1/2 Miles N. of P.O.  
NO EXPOSURE ANY SIDE

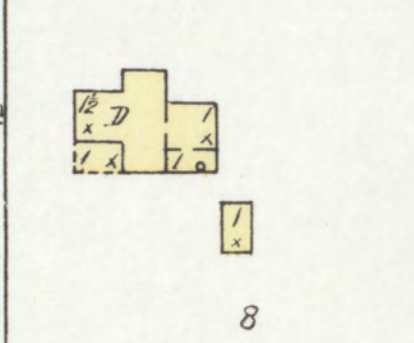
Pond

Located 1/4 Mile N.W. of P.O.

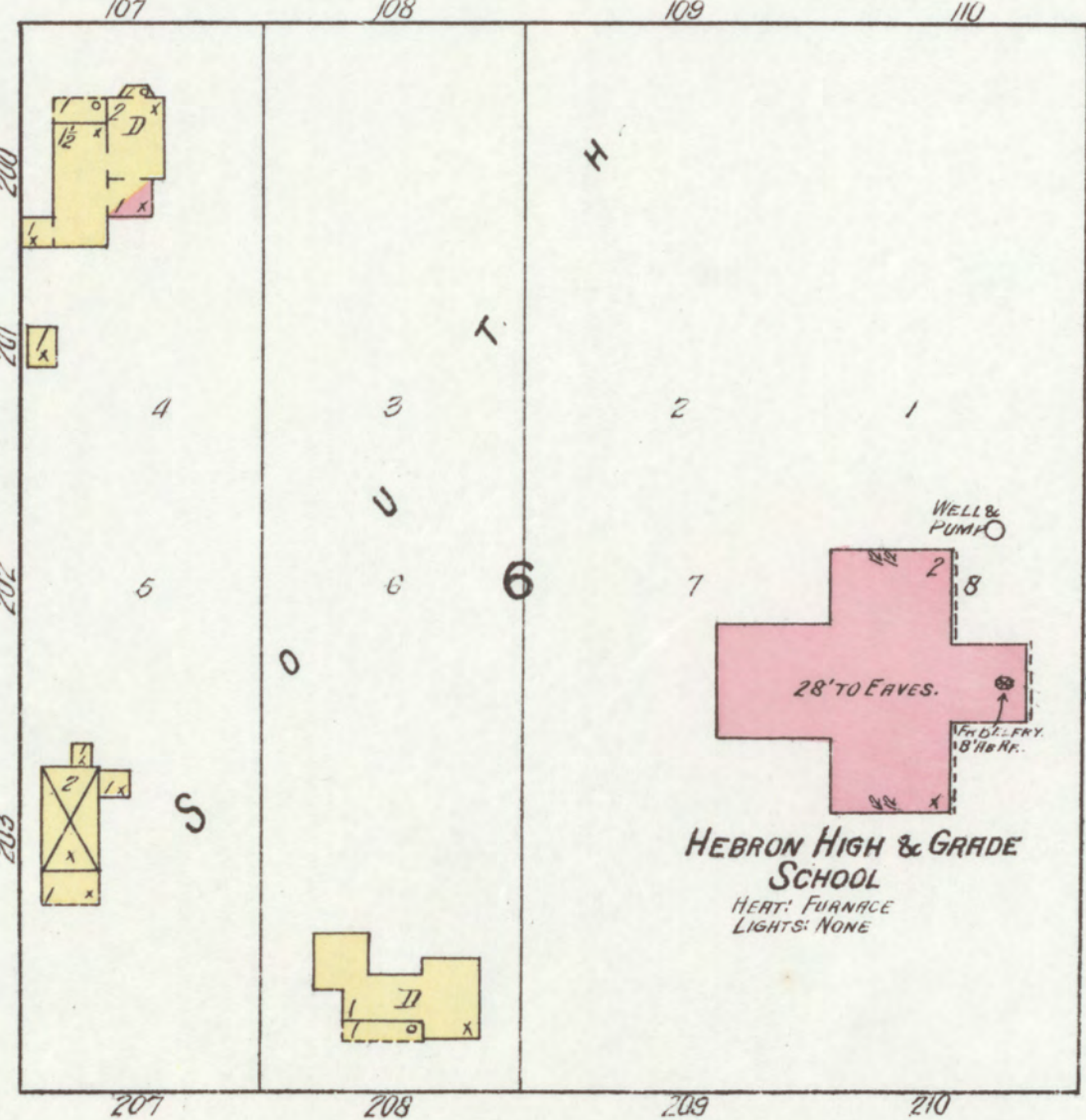
JEFFERSON AV.



ST.



JEFFERSON AV.



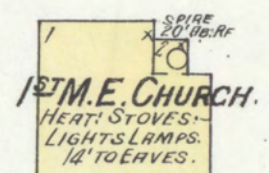
SOUTH

ADAMS AV.

WASHINGTON AV.

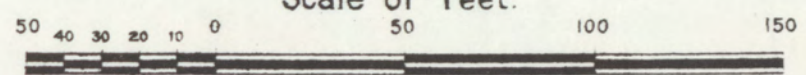
PUBLIC GROUNDS

(10)



M. E. CHURCH.  
HEAT, STOVES -  
LIGHTS, LAMPS.  
10' TO EAVES.

Scale of Feet.



Map Division  
Library of Congress