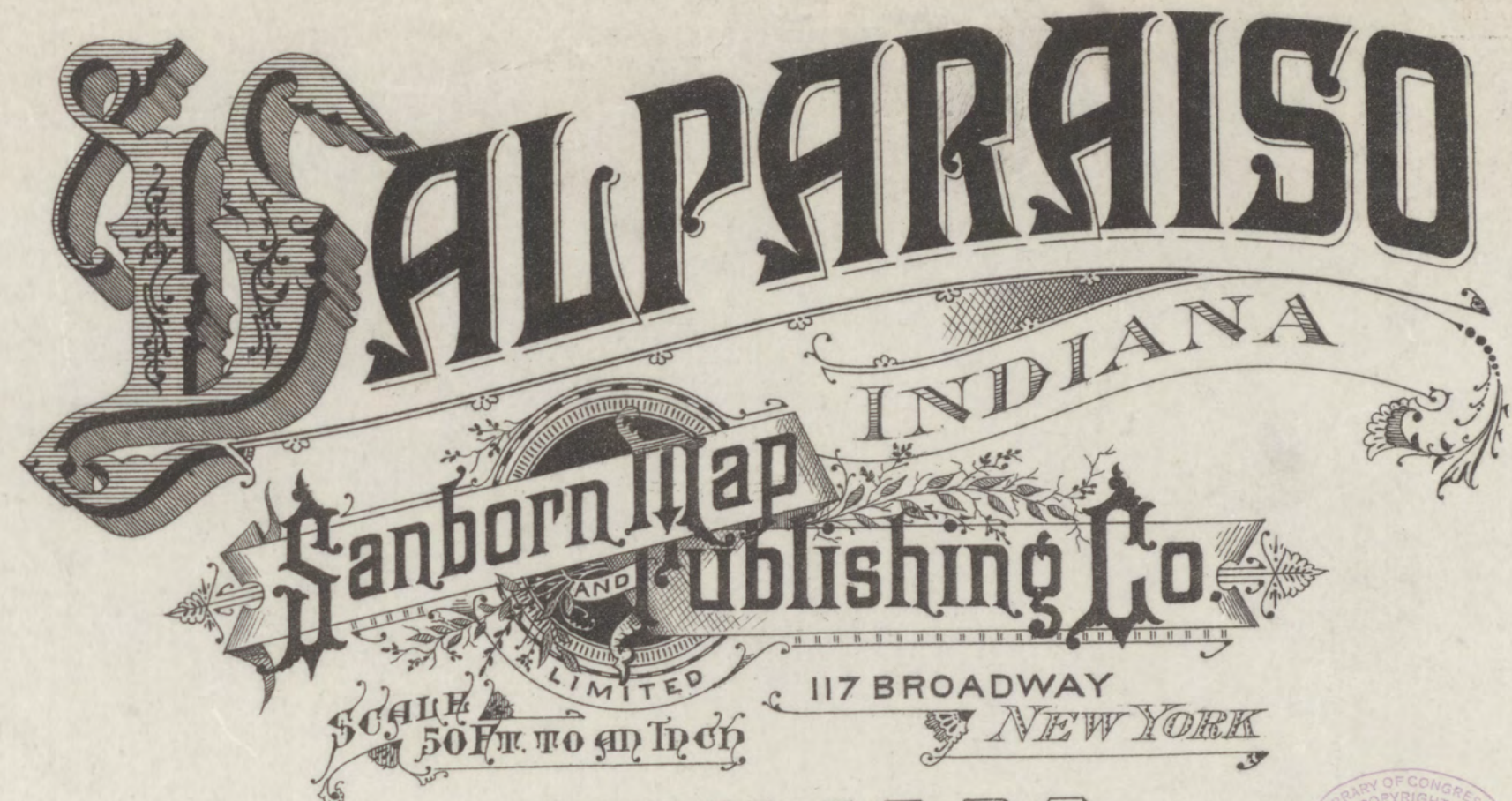


INDEX.

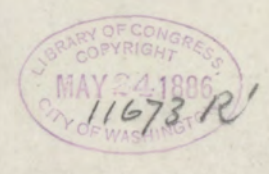
STREETS.		SPECIALS.	
A	W	A	
Academy,.....1-9 *7	Washington, N.,.....1-45 *4	Acker, W. J., & Co., Lumber Yard,..... 3	
".....2-16 *4	".....2-22 *2	Baptist Church,..... 4	
	".....24-54 *5	Barry, M., Carriage Works,..... 7	
	".....1-43 *2	Baum's Hotel,..... 7	
	".....2-50 *3	Bell, E. A., Feed and Planing Mill,..... 7	
	Water, W.,.....1-36 3		
C		B	
Calumet Avenue, near Institute,..... 5		C. & G. T. R. R. Depot and Elevator,.... 7	
".....Fifth,..... 7		Christian Church,..... 5	
Campbell,.....Water to Boundary 7		Continental Hotel,..... 3	
".....near Chicago,..... 7		Court House and Jail,..... 2	
Chicago, E.,.....1-24 5			
".....W.,.....1-26 4			
".....Academy to Campbell 7			
College Avenue, S.,.....35-56 6			
D		F	
Diagonal,.....56-75 6		Felton Livery,..... 2	
E		G	
East, S.,.....30-65 6		Gas Works,..... 3	
Erie, E.,.....1-24 5		German Lutheran Church,..... 5	
".....W.,.....1-28 4		Grand Central Hotel,..... 3	
F		H	
Fifth,..... 7		Harold & Co., Elevator,..... 3	
Franklin, N.,.....1-20 2			
".....21-50 5			
".....S.,.....1-32 2			
Freeman,.....1-20 6			
G		K	
Greenwich, S.,.....35-68 6		Kellogg Manufacturing Co.,..... 3	
I		M	
Institute,.....1-22 5		Merchants' Hotel,..... 2	
J		N	
Jefferson, E.,.....1-23 *5		Messenger Printing,..... 2	
".....2-24 *2		Methodist Church,..... 5	
".....W.,.....1-30 4		Morgan, E., Livery,..... 3	
L		P	
Lafayette, N.,.....1-18 4		Powell & Pagin, Livery,..... 3	
".....S.,.....1-52 3		Presbyterian Church,..... 2	
Locust, S.,.....35-51 *6			
M		Q	
Main, E.,.....1-56 2		Quatermass Opera House,..... 4	
".....W.,.....1-65 *4			
".....2-52 *3			
Mechanic, E.,.....1-40 2			
".....W.,.....1-50 3			
Michigan, N.,.....1-12 2			
".....S.,.....14-36 5			
Monroe, E.,.....1-24 2			
".....W.,.....1-26 3			
Morgan, N.,.....1-15 *2			
".....68-80 7			
".....S.,.....2-18 *2			
Mound,..... 6			
N		S	
Napoleon, N.,.....1-34 4		St. Paul's Church and School,..... 7	
".....S.,.....1-50 3		Stiles Blook,..... 6	
S		V	
Short,.....1-10 6		Valparaiso High School,..... 5	
U		W	
Union,.....22-45 6		White & Bell, Lumber Yard,..... 7	
V			
Valparaiso, N., near Fifth,..... 7			

* Indicates only one side of Street shown.



MAY 1886

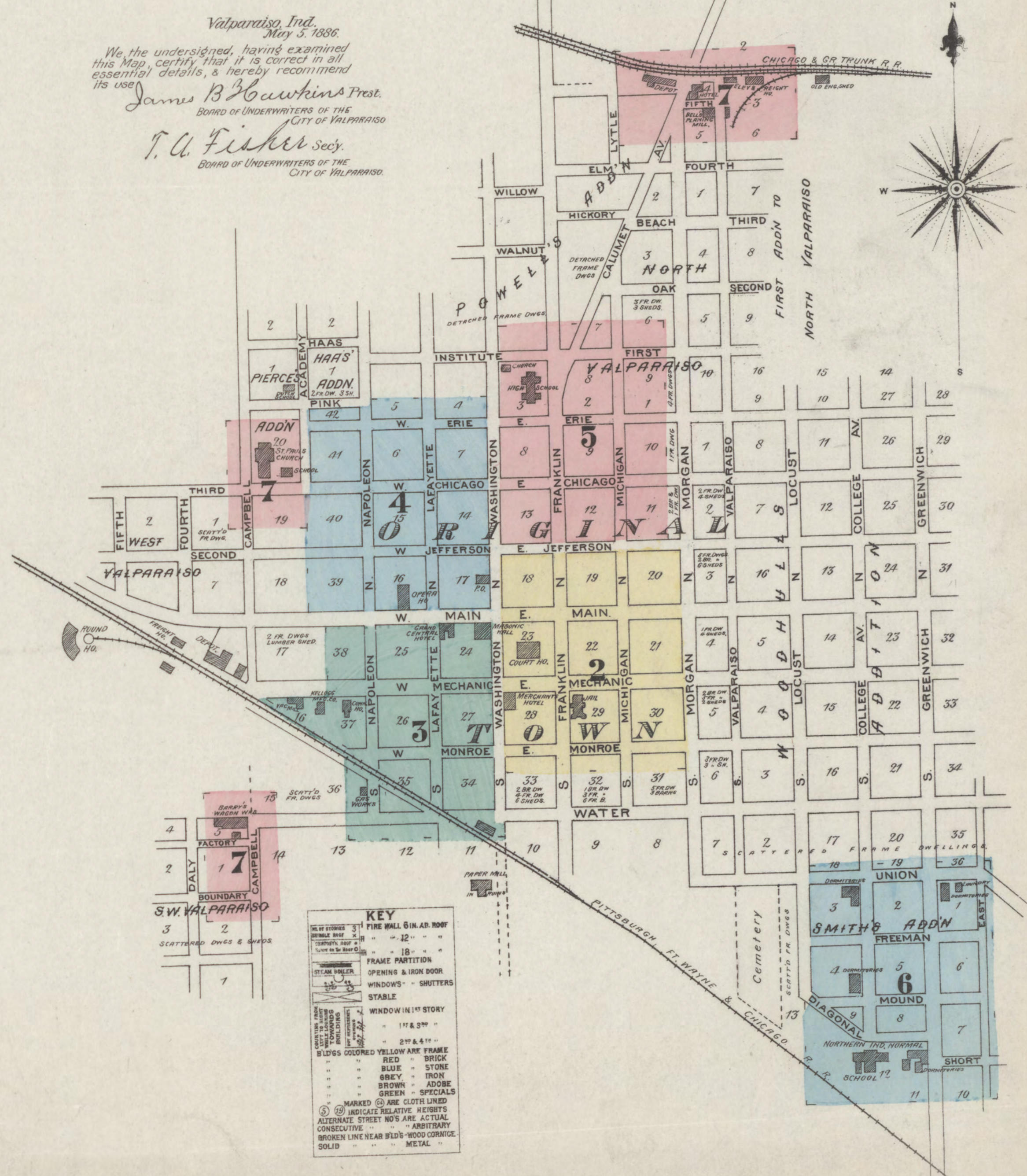
Copyright 1886 by the Sanborn Map & Publishing Co. Limited.



POPULATION 5,500
 Prevailing Winds
 South West

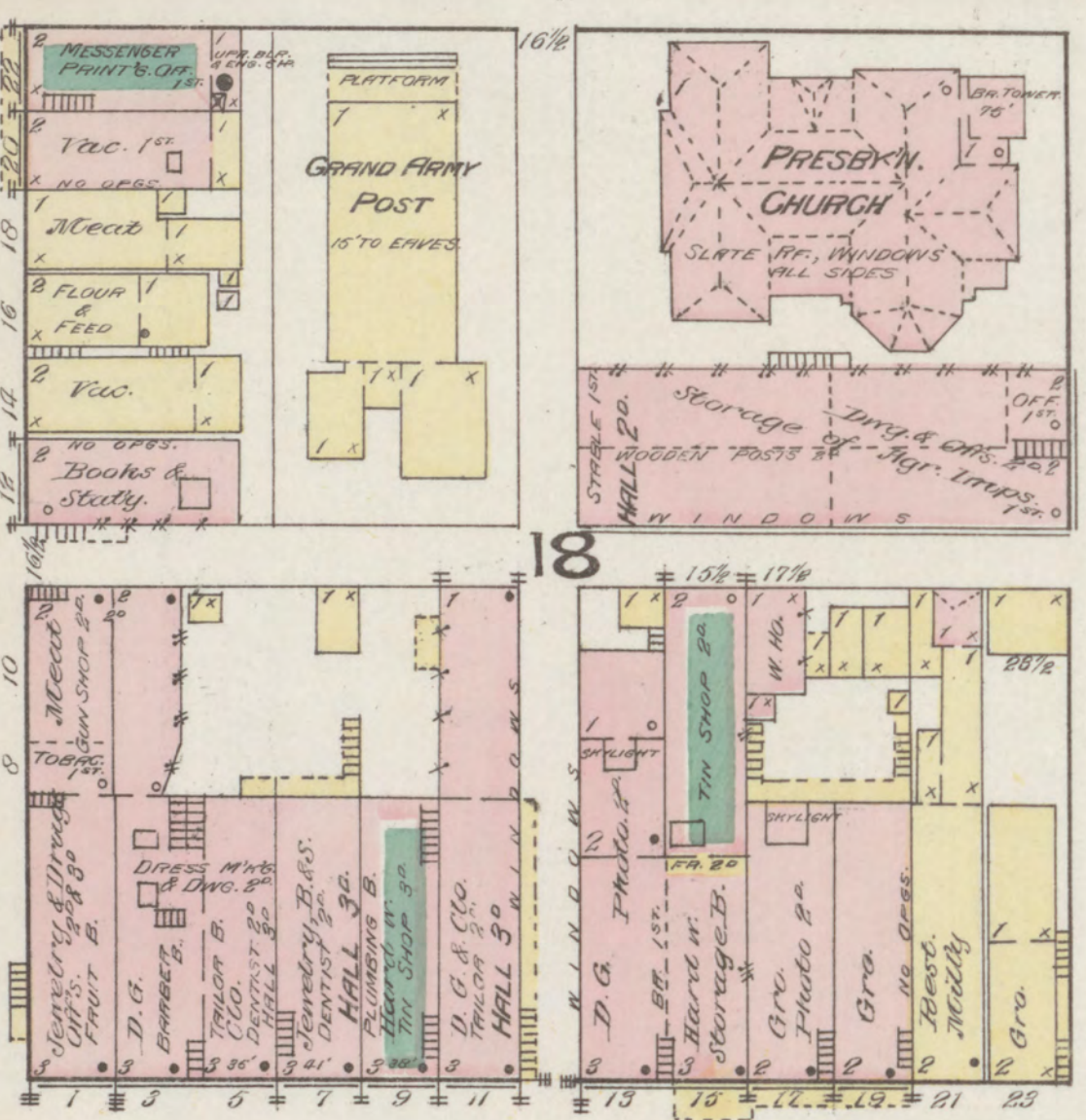
WATER FACILITIES. Brick Pump Ho. situated 3 Miles from town on banks of Chain of Lakes. Main Pipe down Calumet Ave. 12" and 10" Distributing Pipes 8" & 4". Two Pumps. Holly System. Capac. 6 Million Galls per 24 hours. 13 miles of Wooden Pipes. 50 Hyds.

FIRE DEPARTMENT. 2 Hand Engines No. Stearns Eng. 2 Hose Carts 2500 new Hose. 1 Hook & Ladder Truck, also One at Normal School with private Hose Cart & Hose.

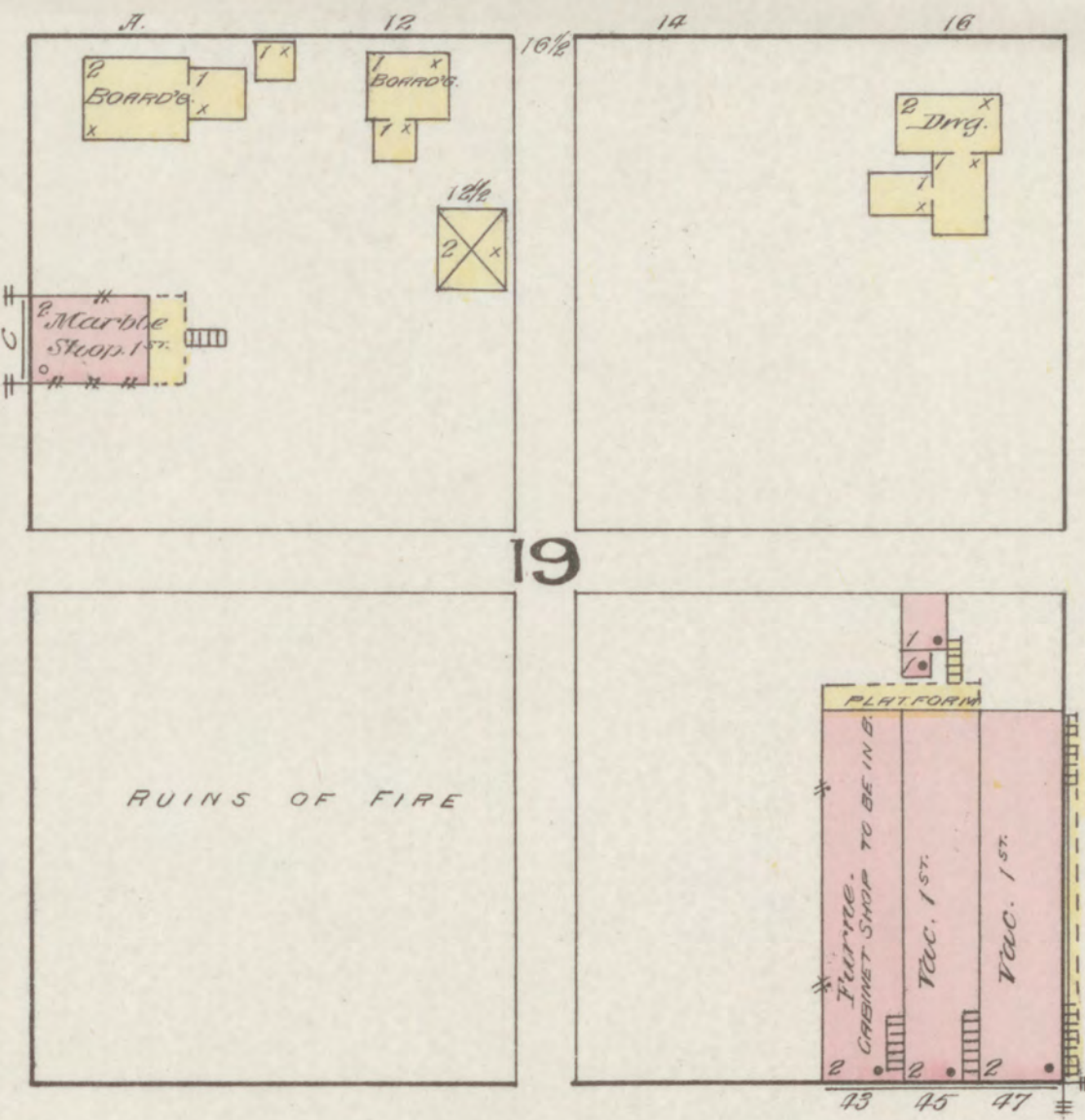


E. JEFFERSON

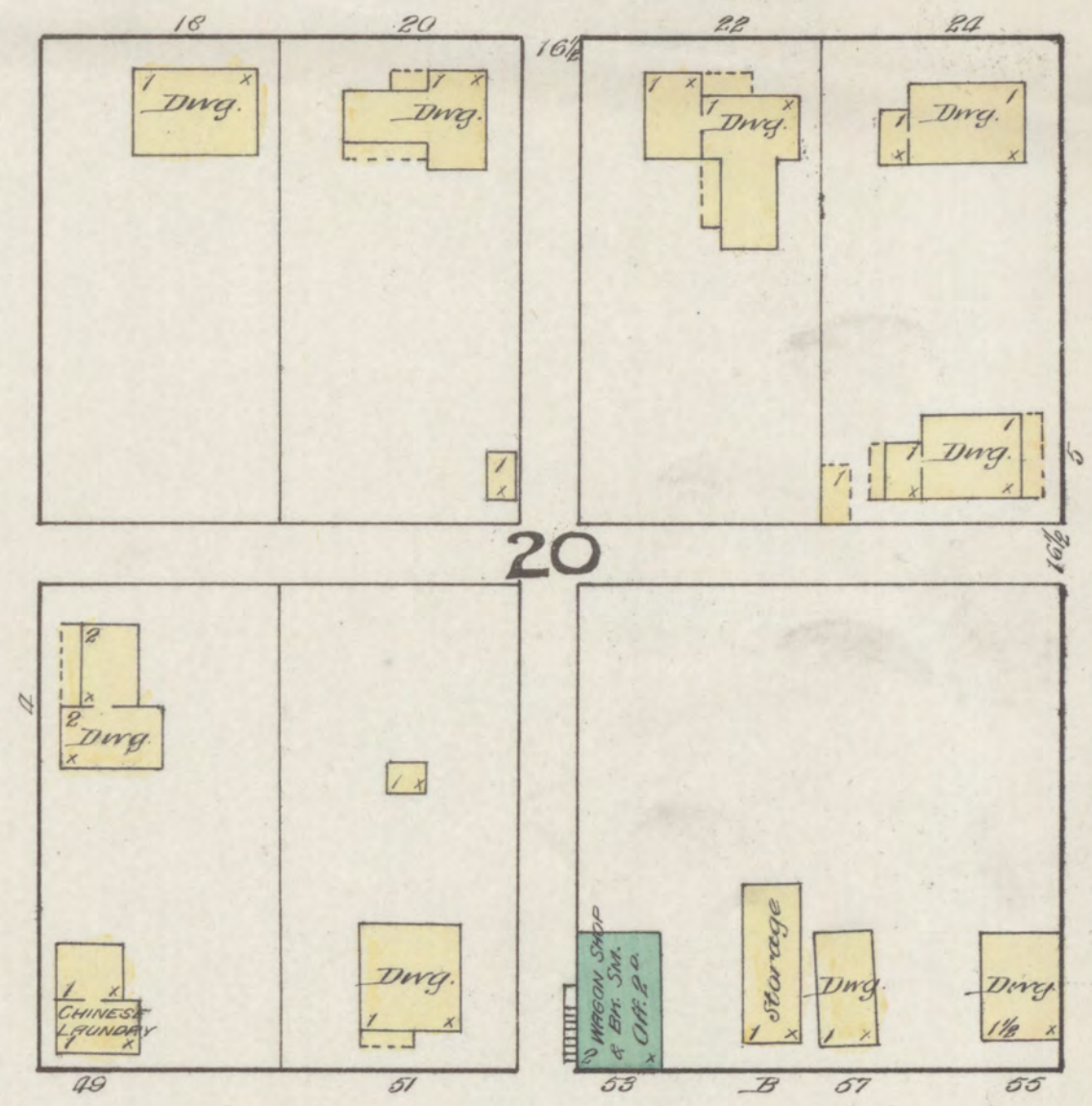
N. WASHINGTON



N. FRANKLIN



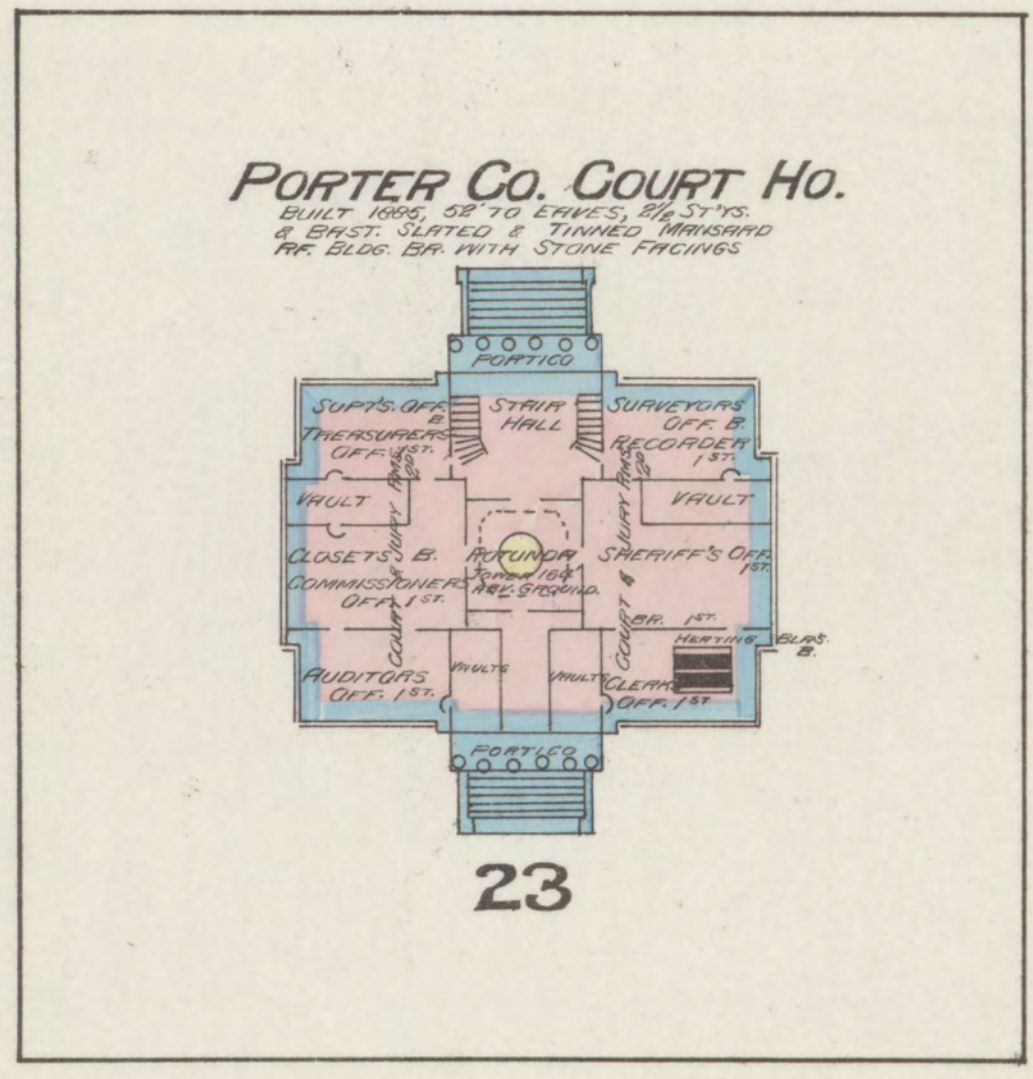
N. MICHIGAN



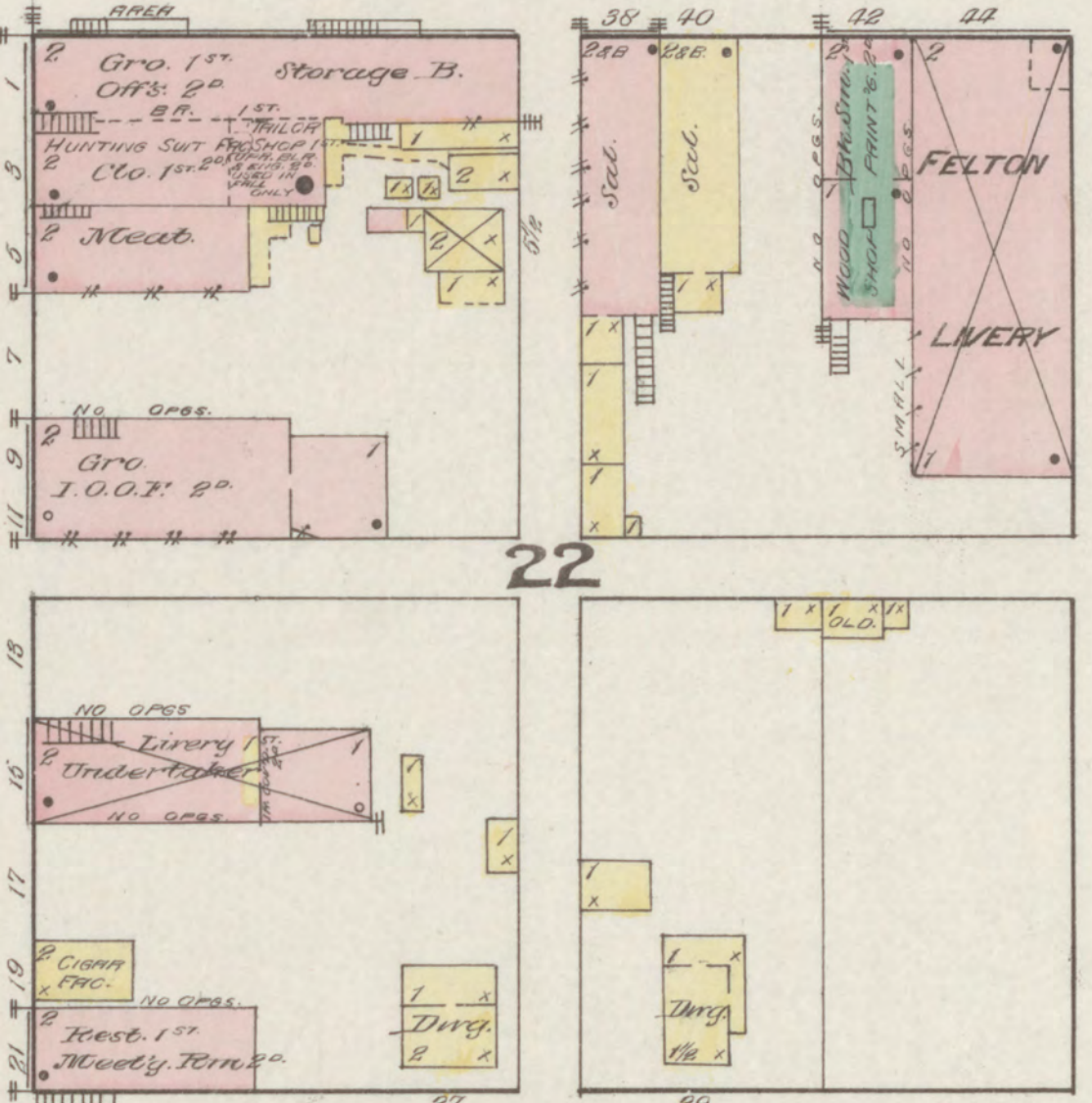
N. MORGAN

E. MAIN

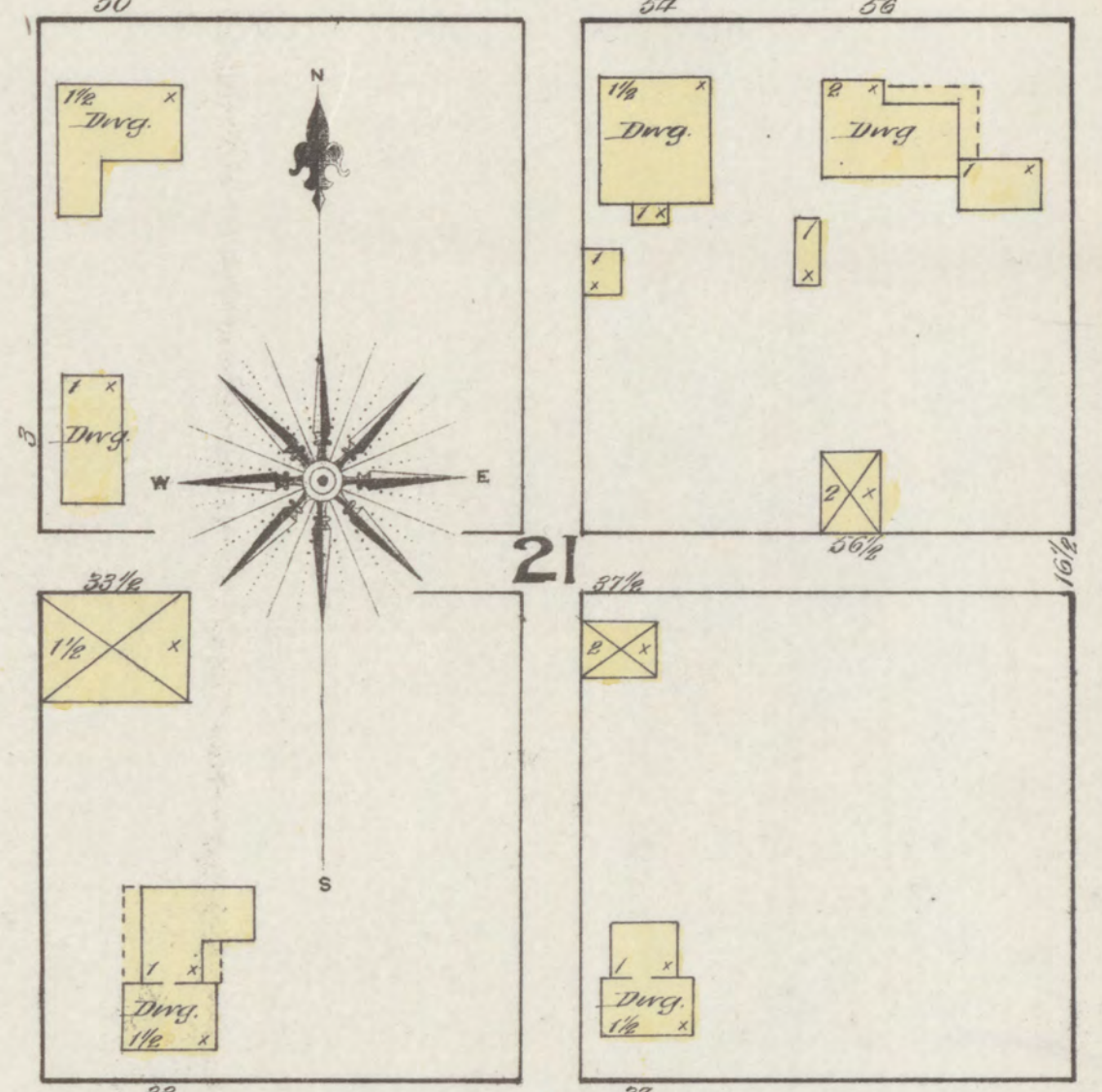
S. WASHINGTON



S. FRANKLIN



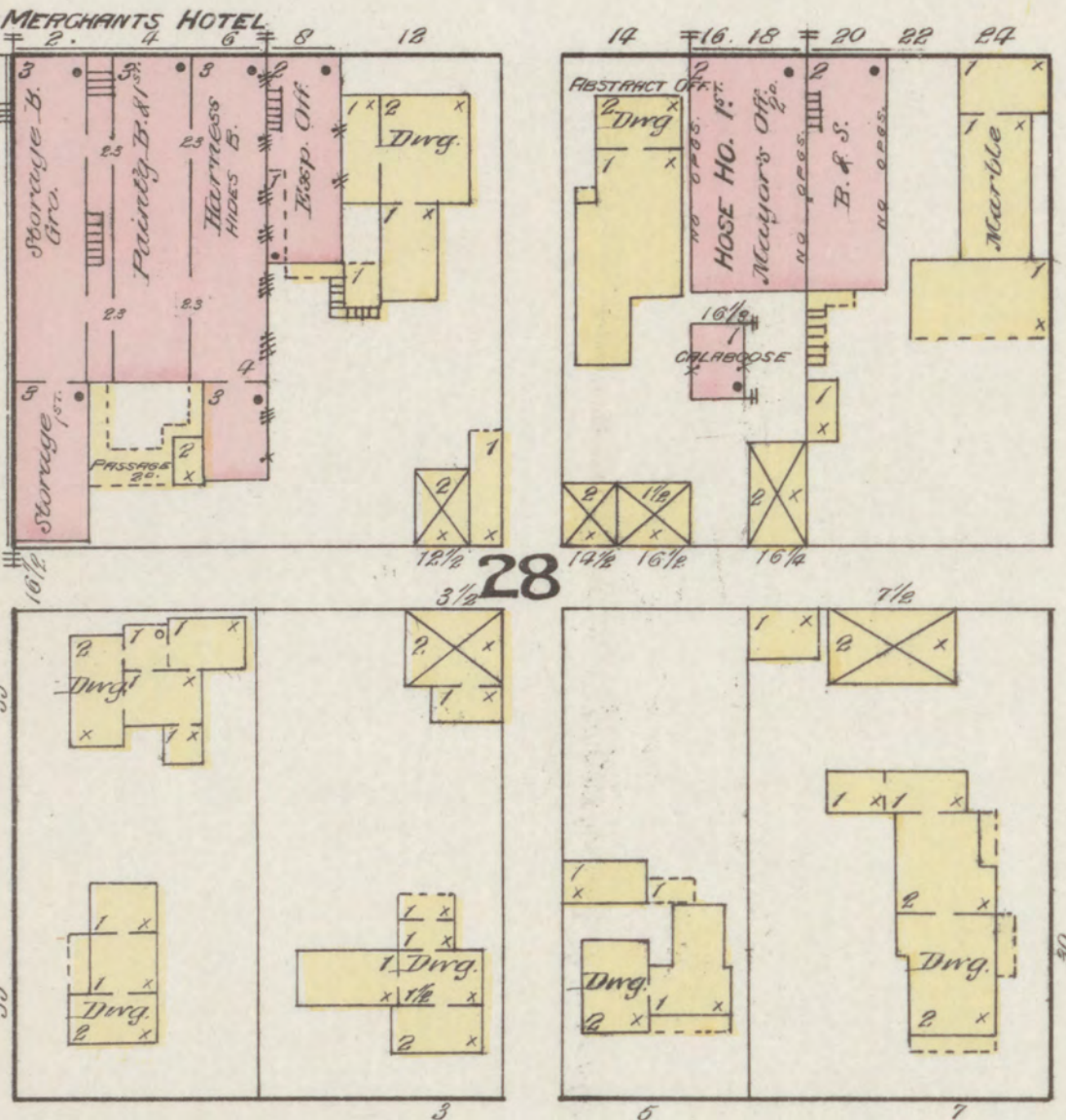
S. MICHIGAN



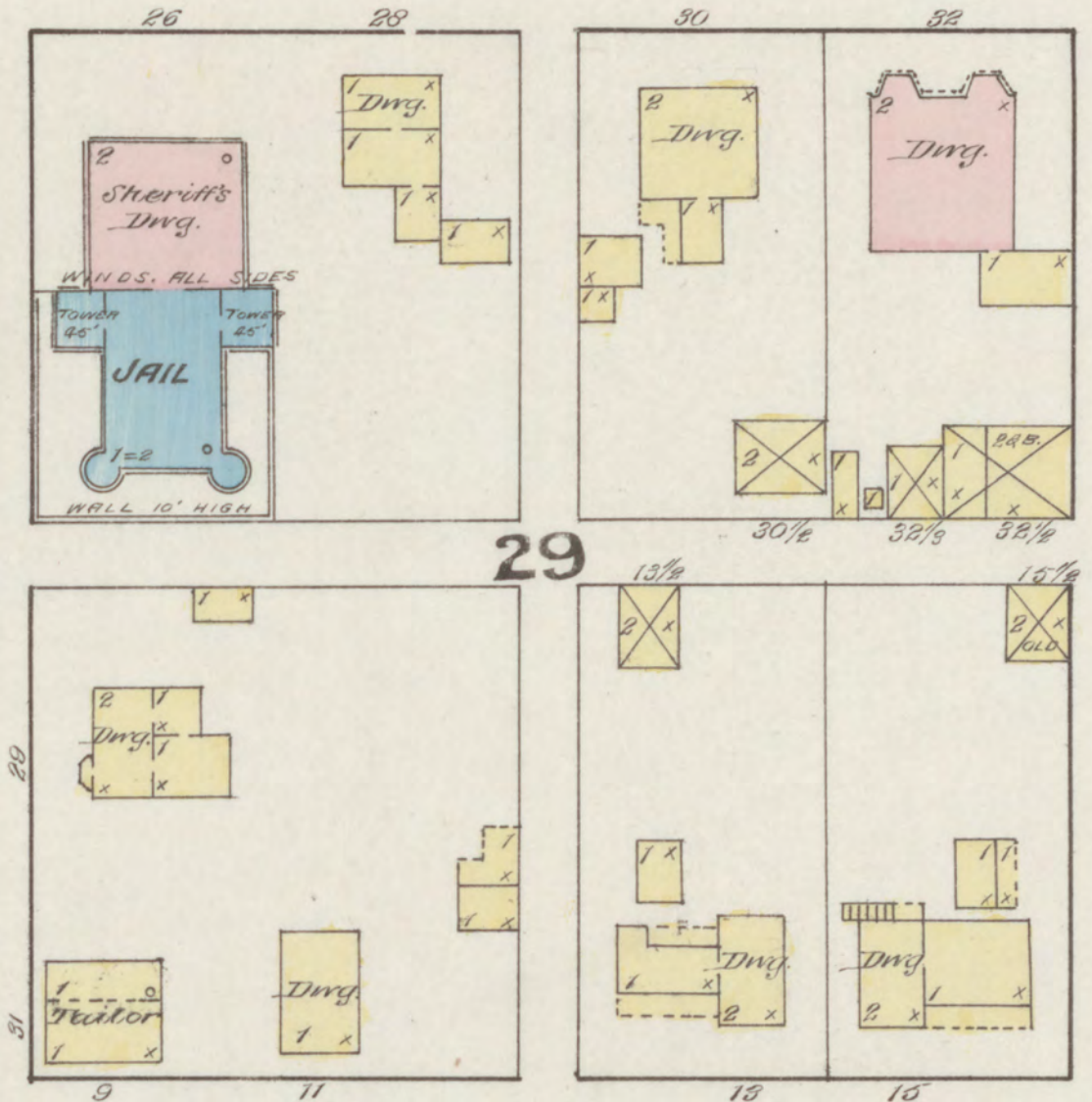
S. MORGAN

E. MECHANIC

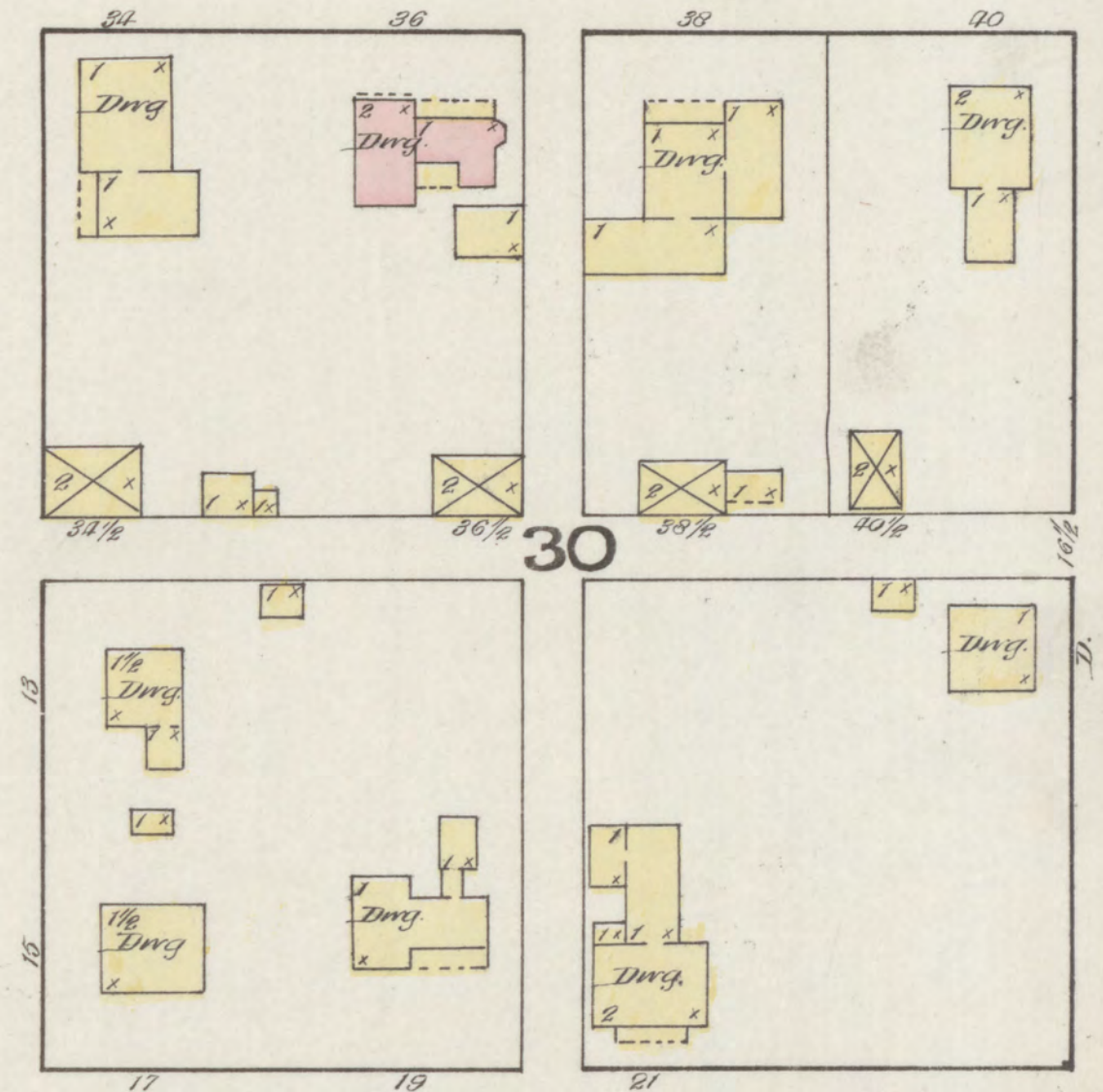
MERCHANTS HOTEL



S. FRANKLIN

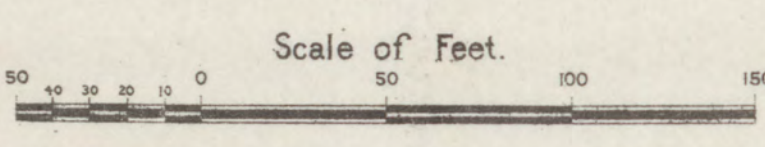
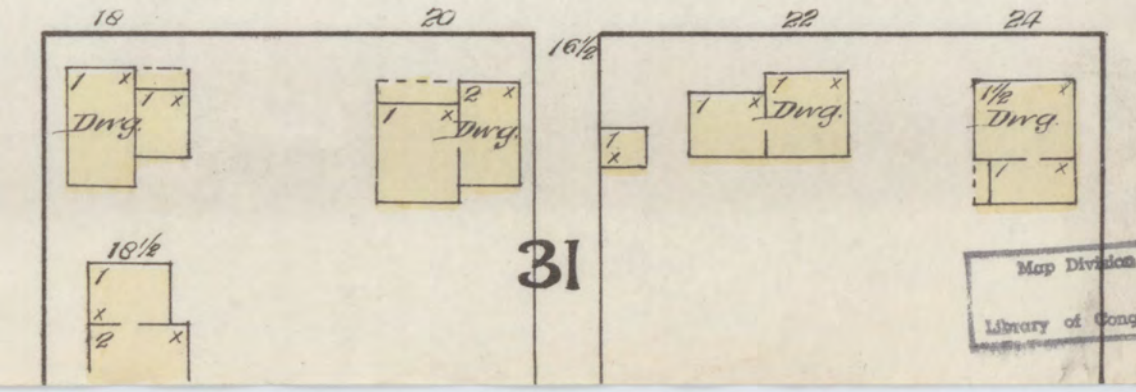
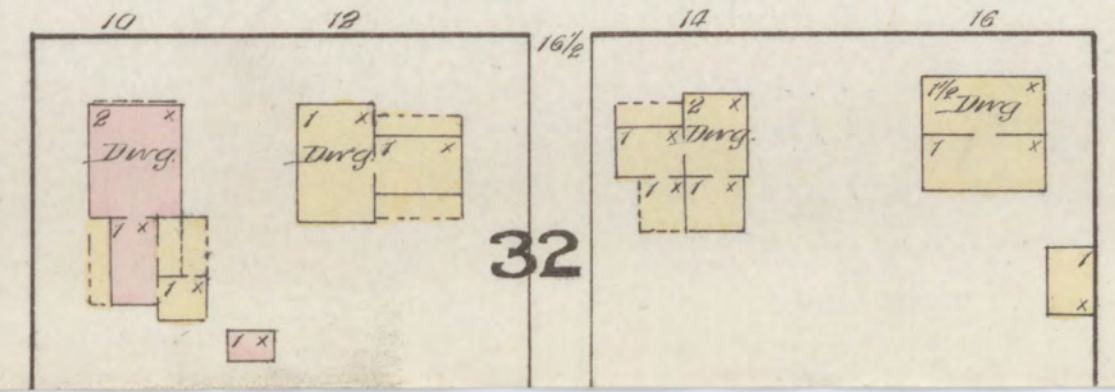
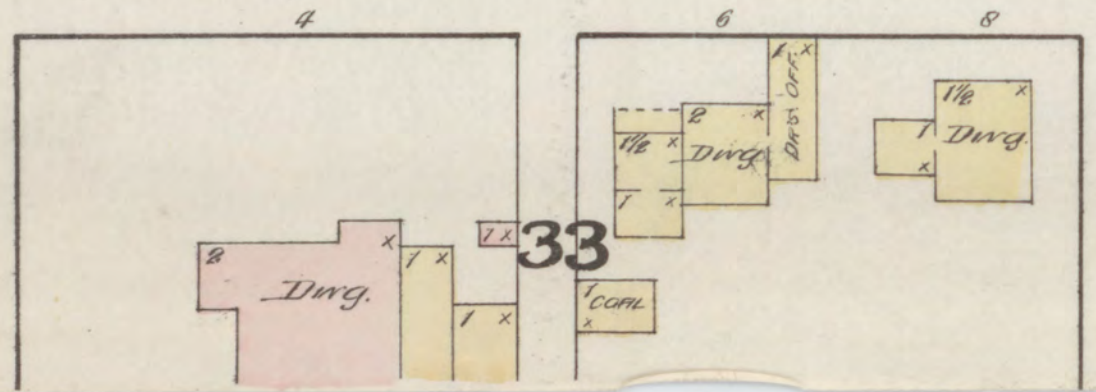


S. MICHIGAN



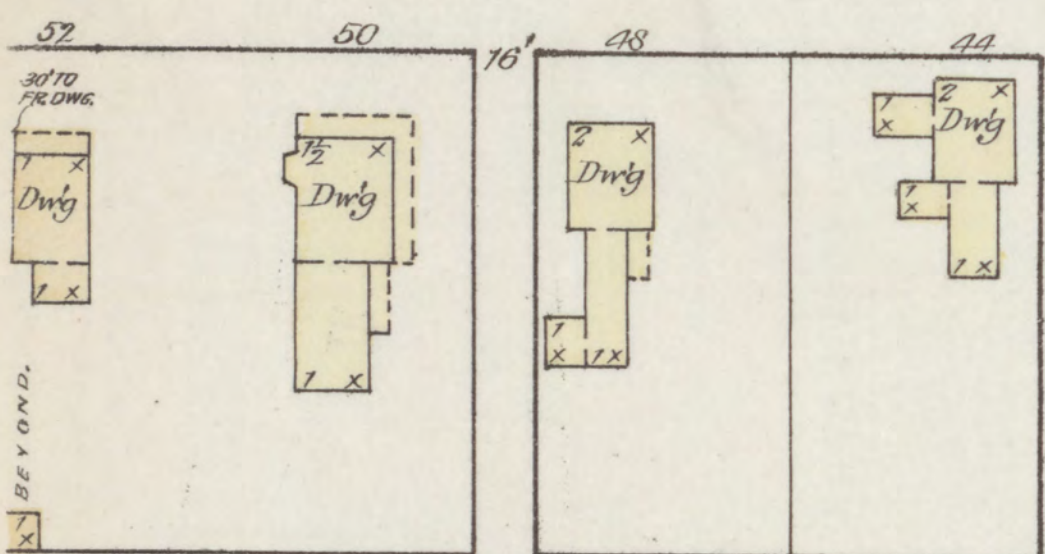
S. MORGAN

E. MONROE

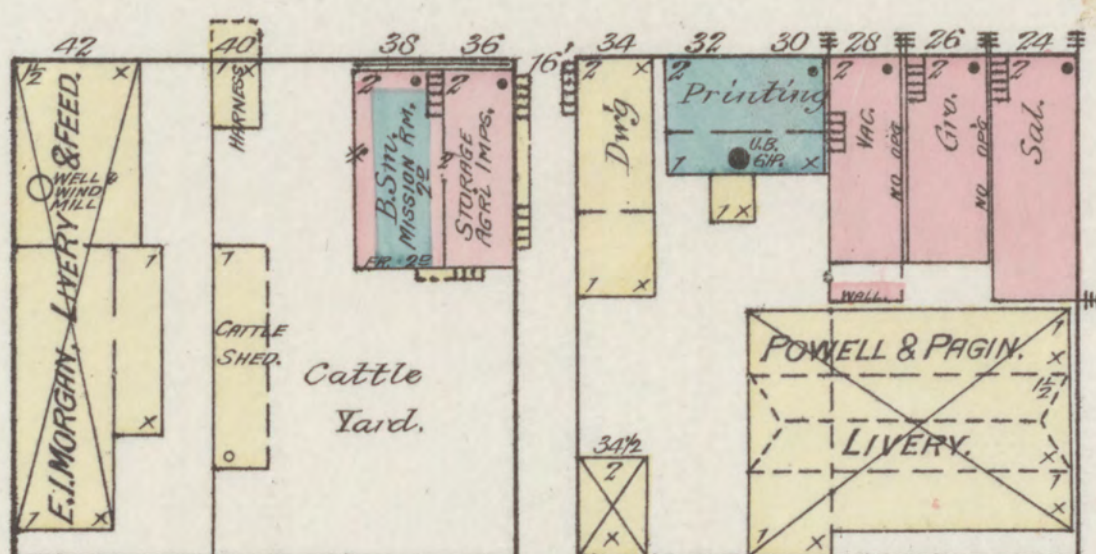


W. MAIN

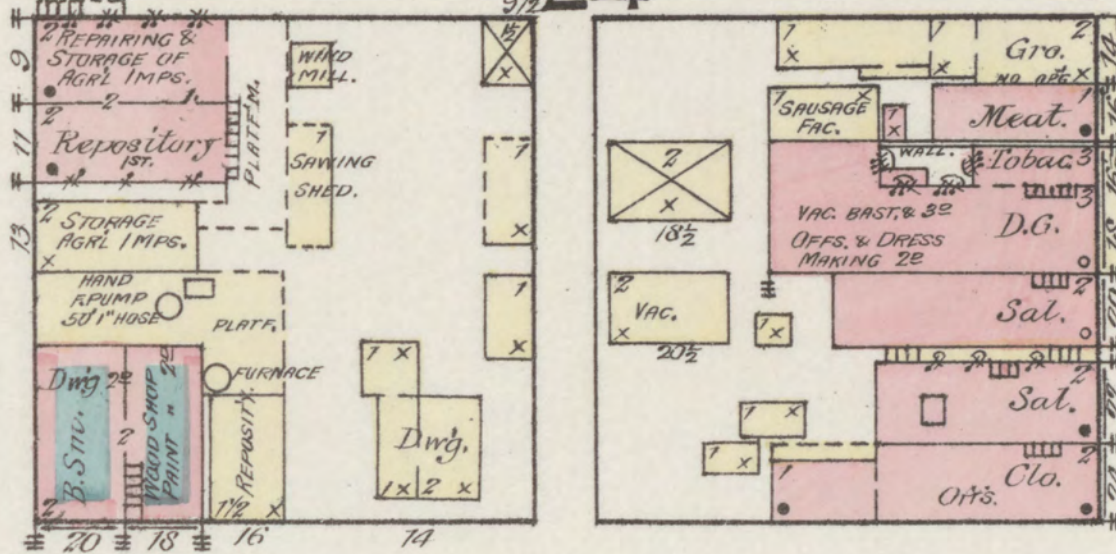
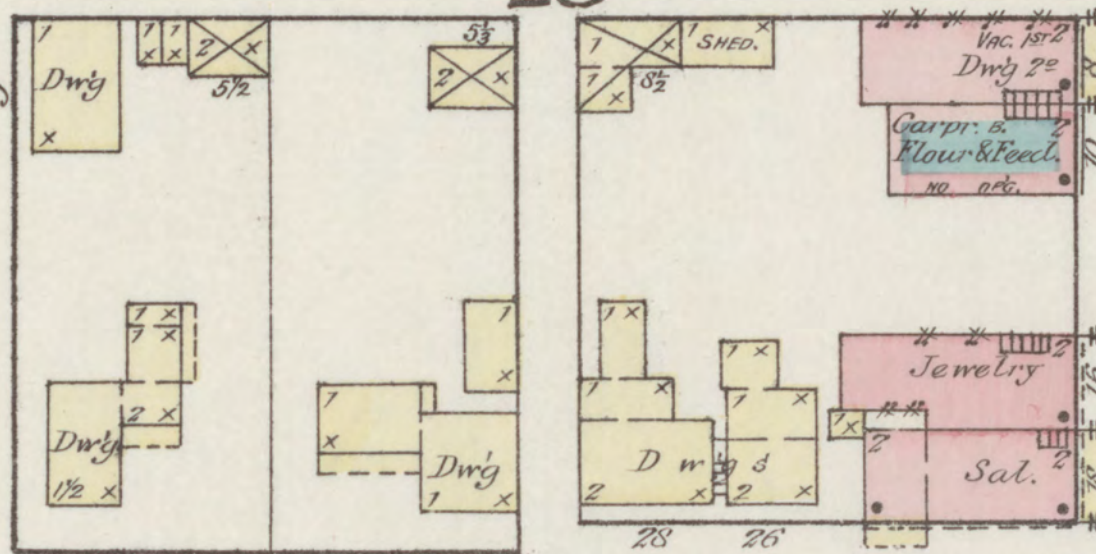
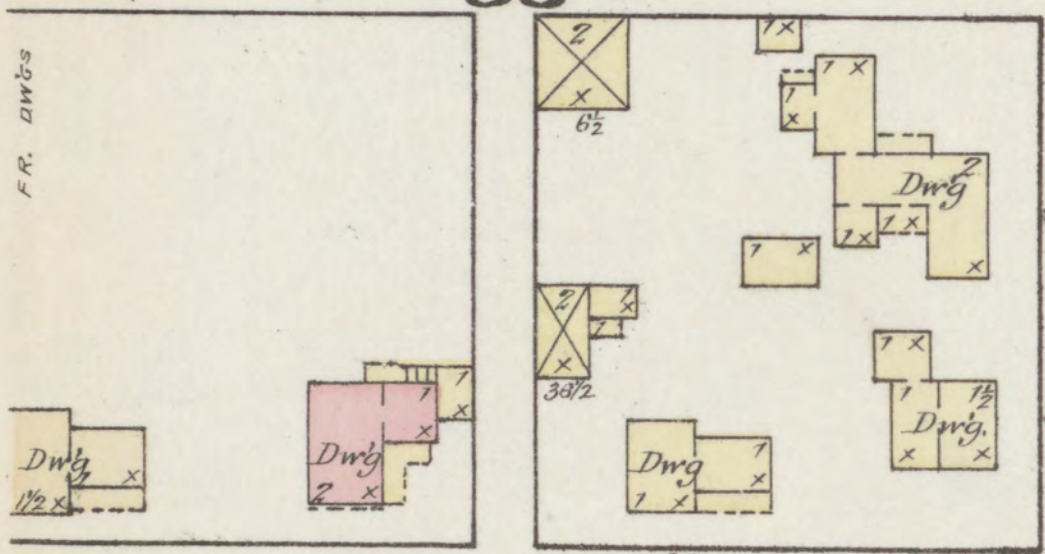
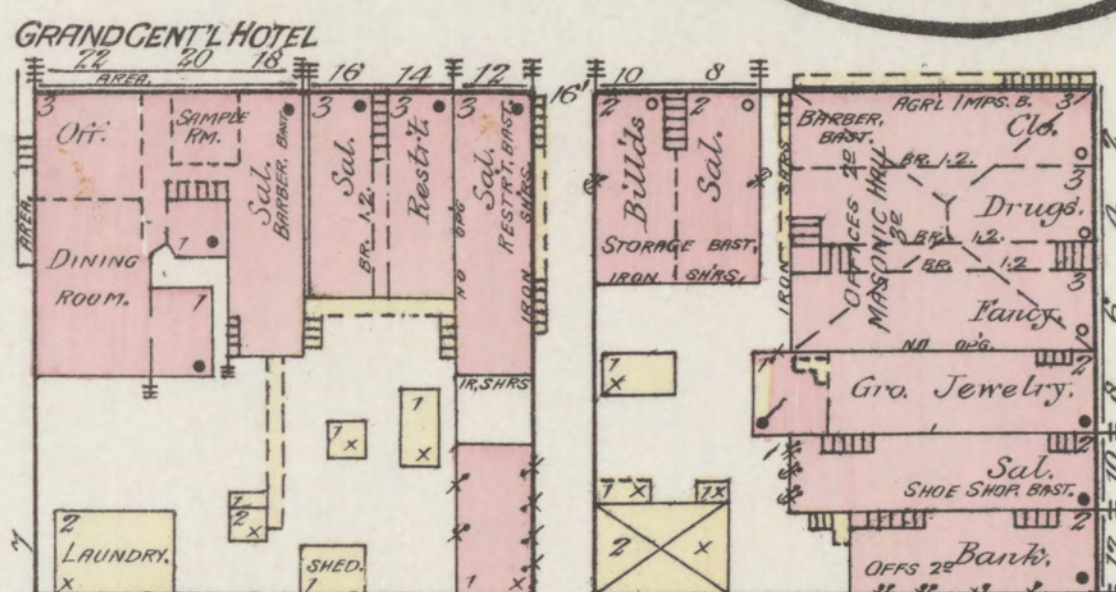
6" W. PIPE



66'

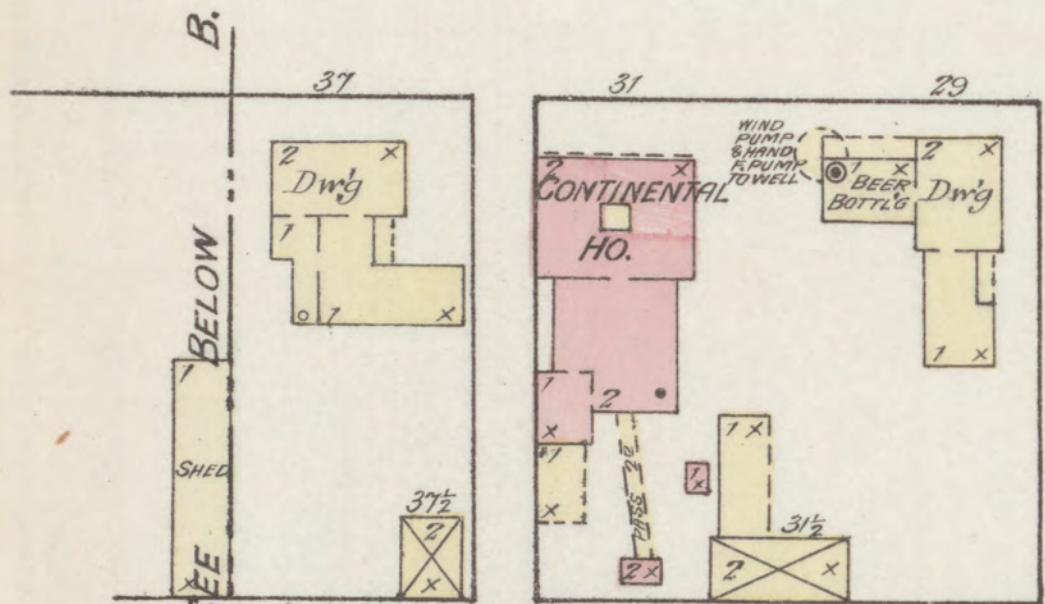


66'

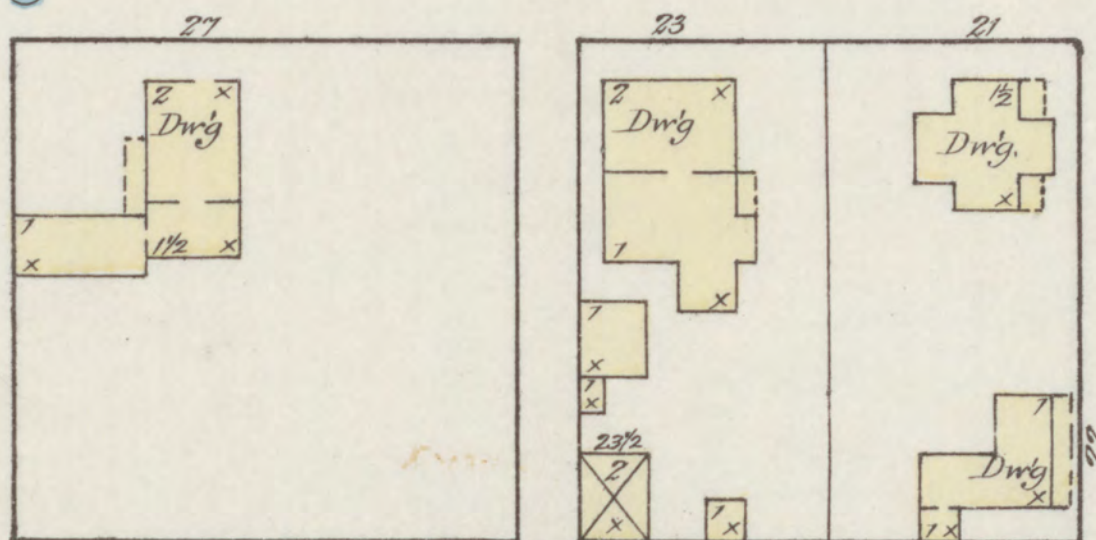


W. MEGHANIC

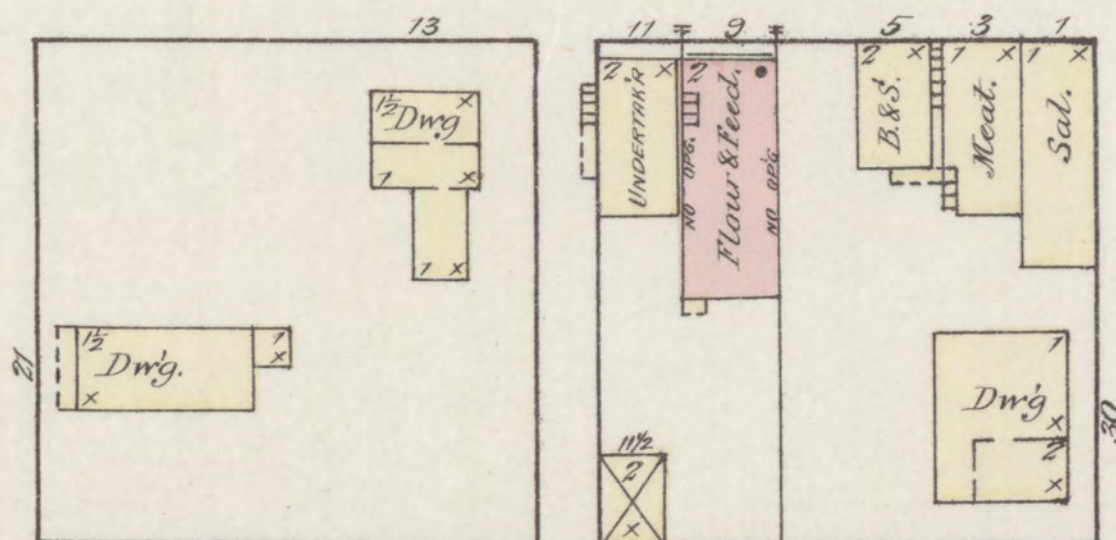
6" W. PIPE



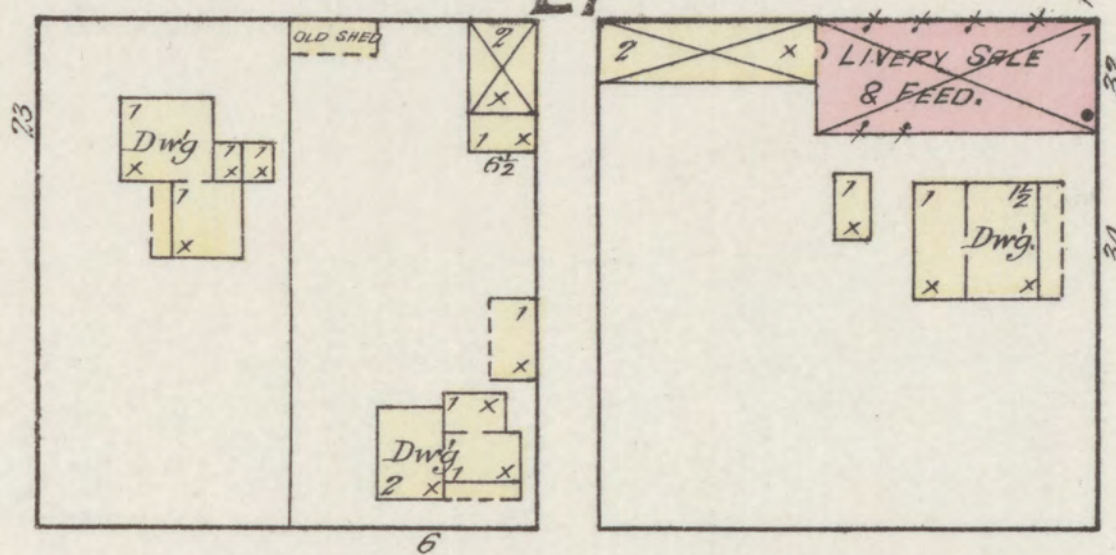
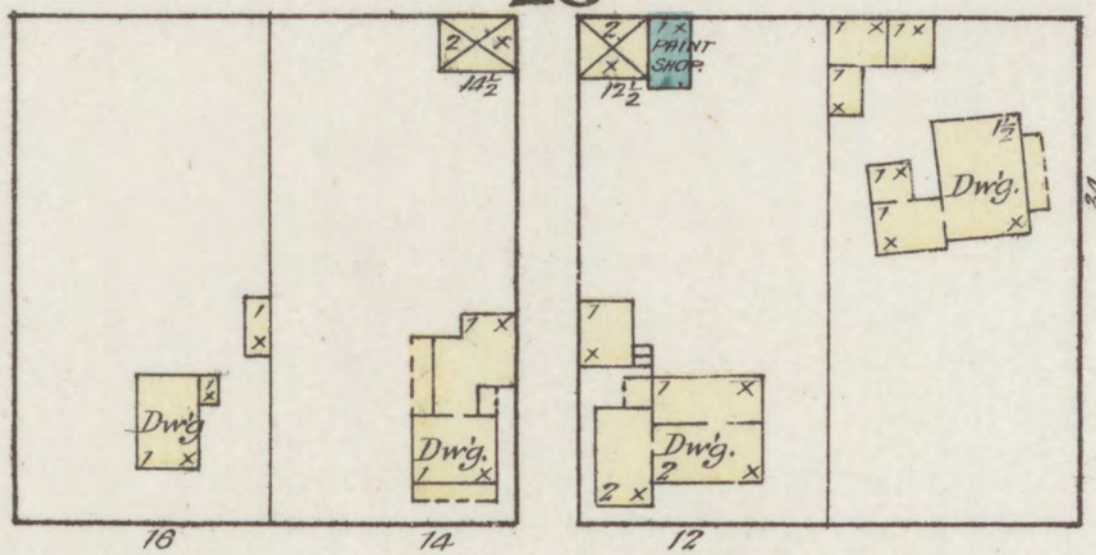
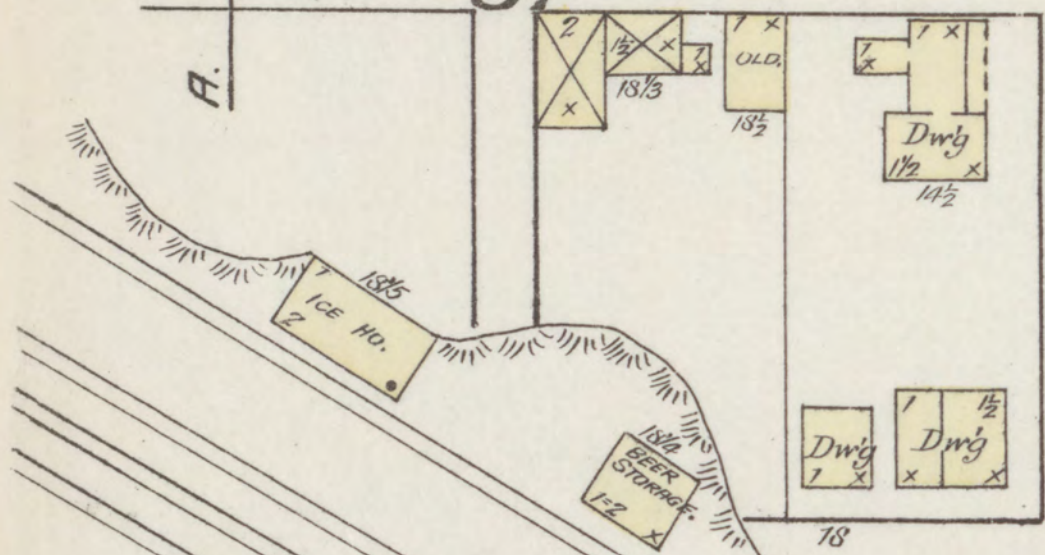
S. NAPOLEON



S. LAFAYETTE

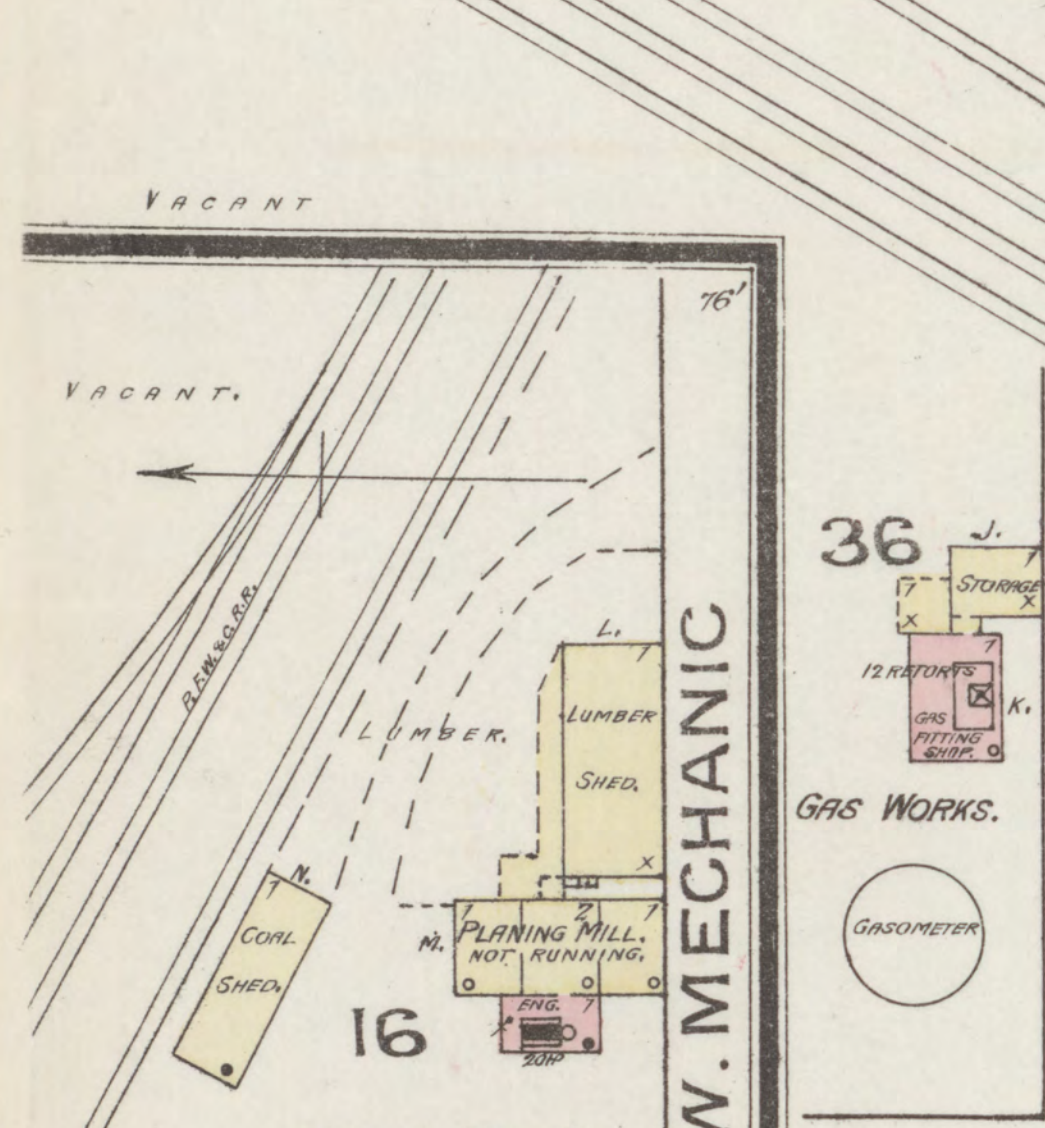


S. WASHINGTON

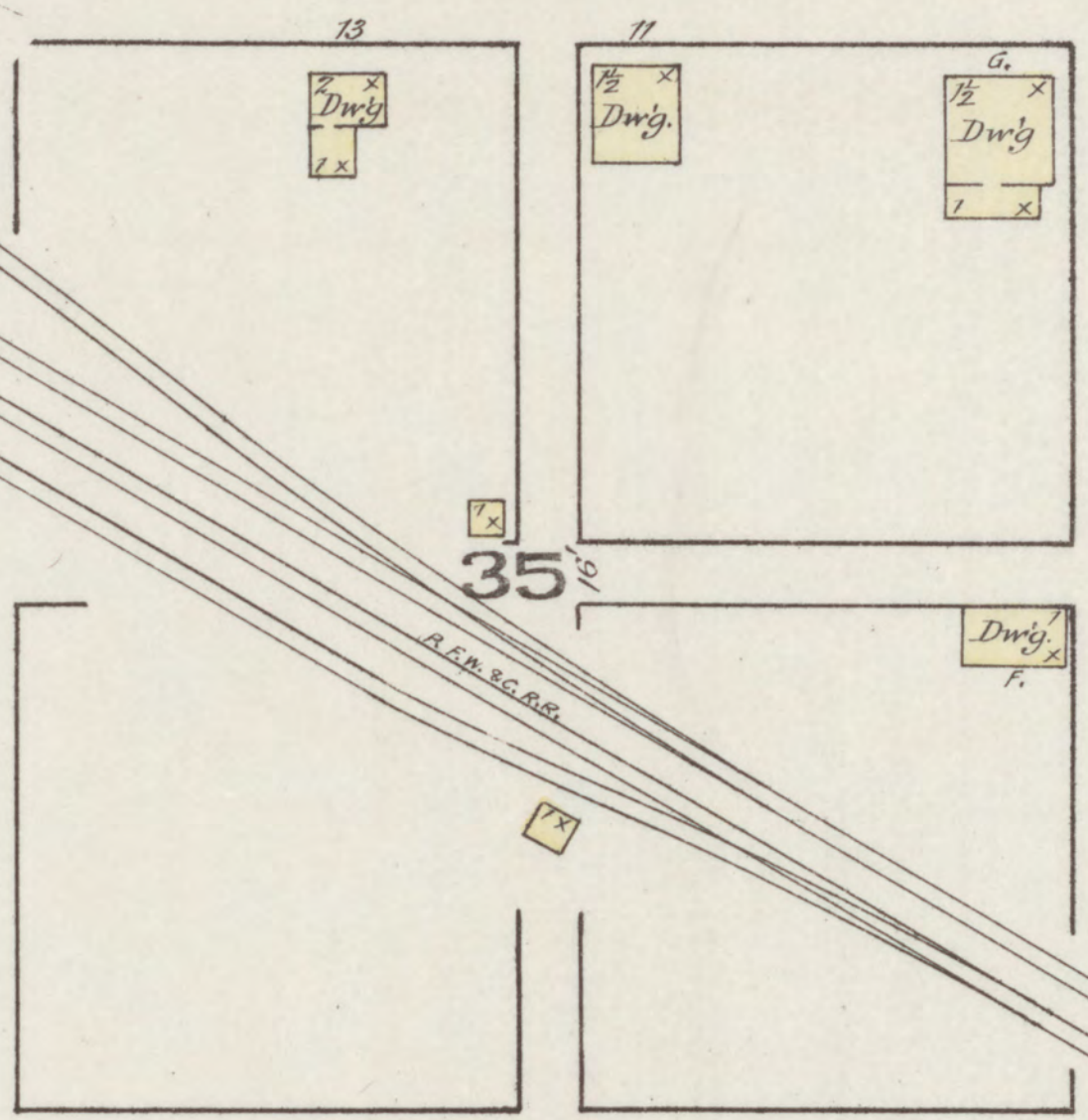


W. MONROE

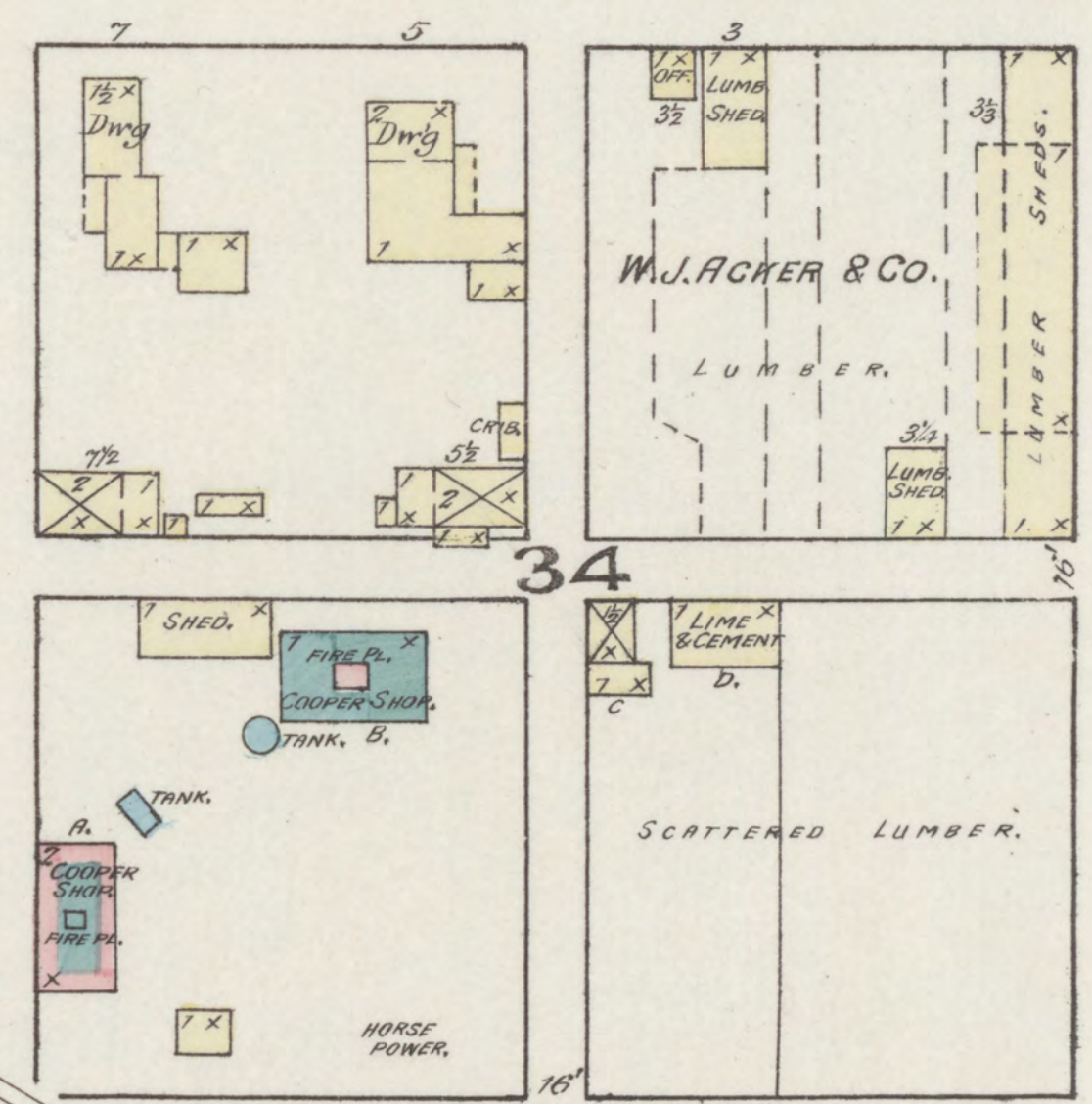
6" W. PIPE



S. NAPOLEON



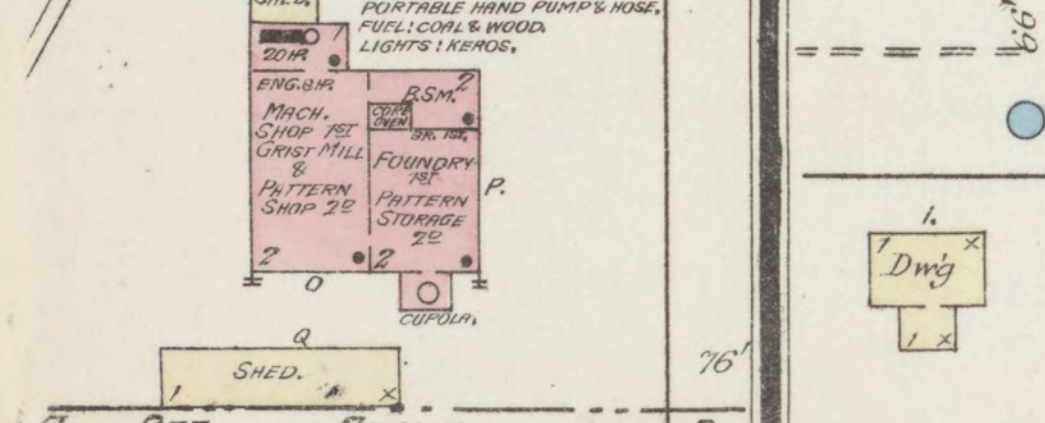
S. LAFAYETTE



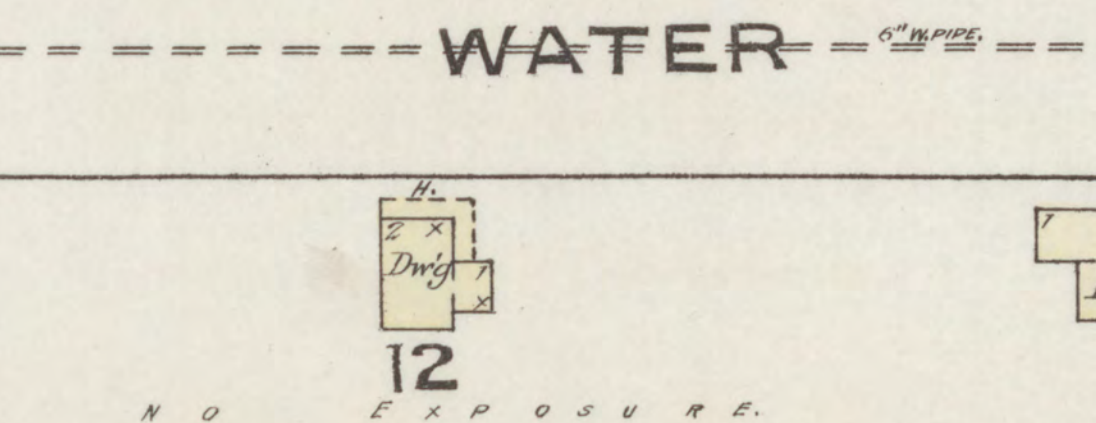
S. WASHINGTON

WATER

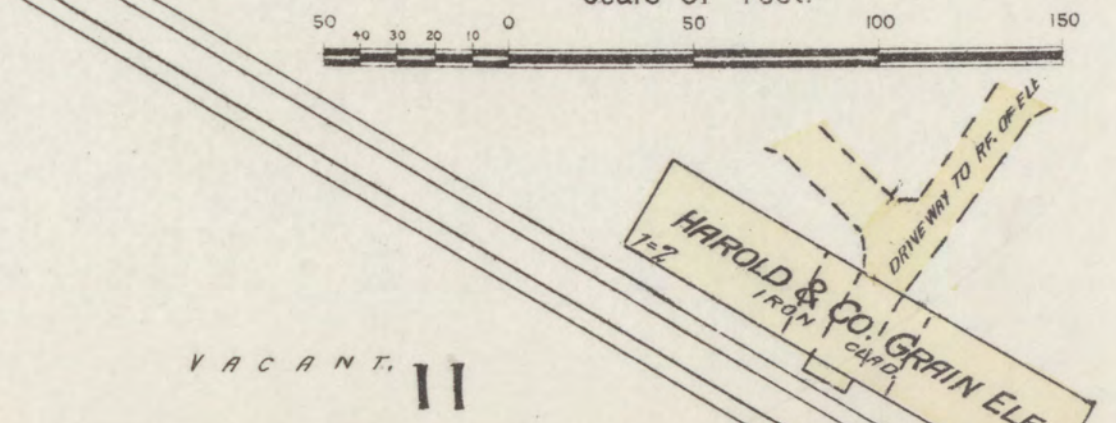
6" W. PIPE



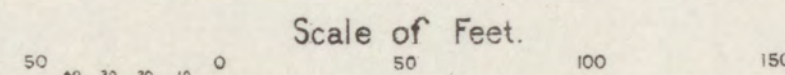
S. NAPOLEON



S. LAFAYETTE

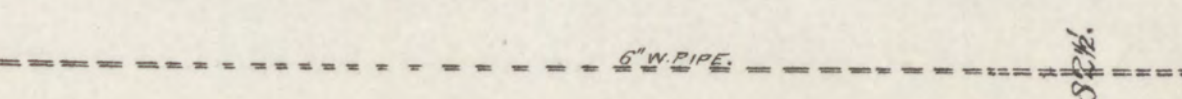
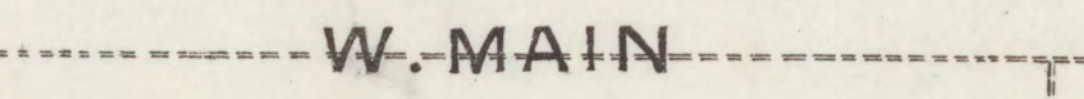
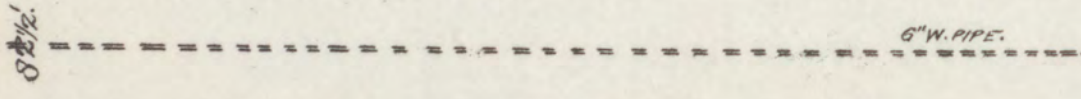
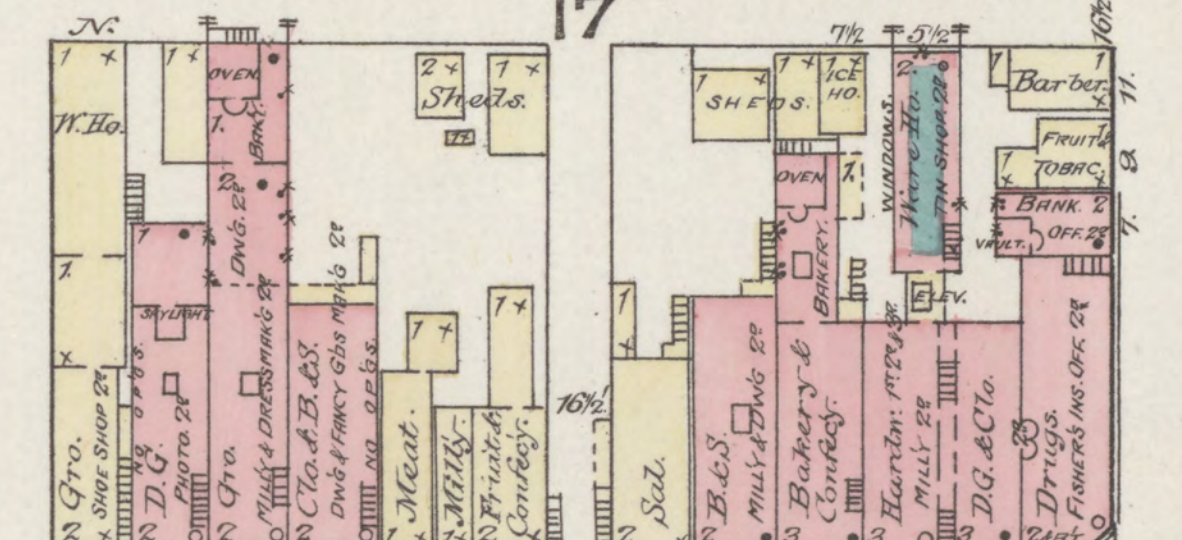
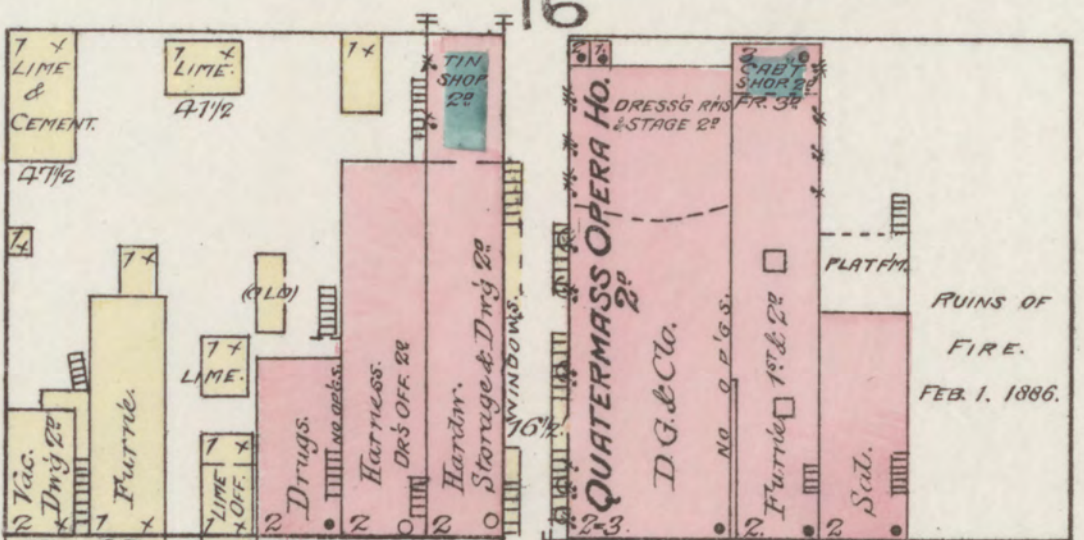
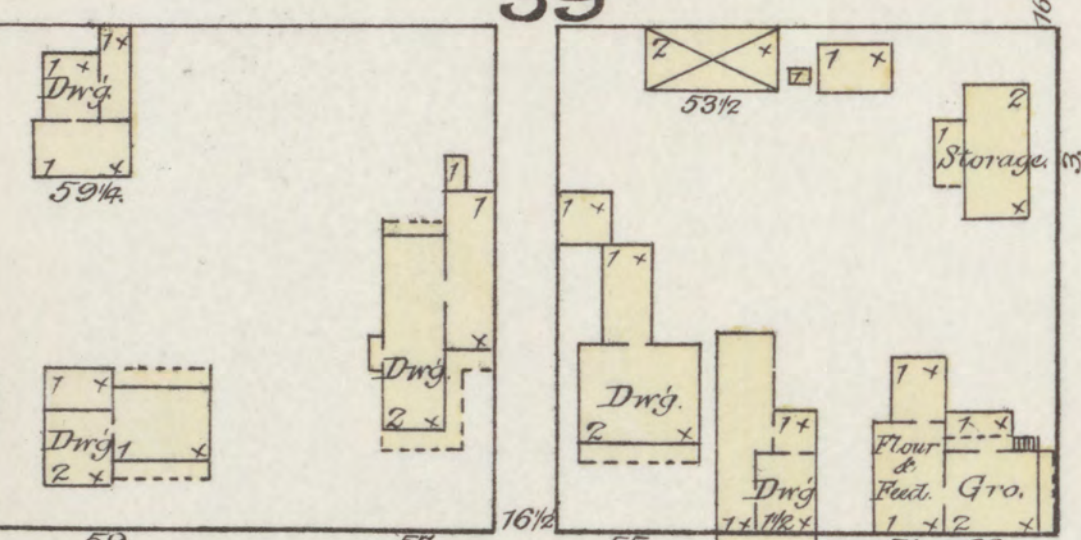
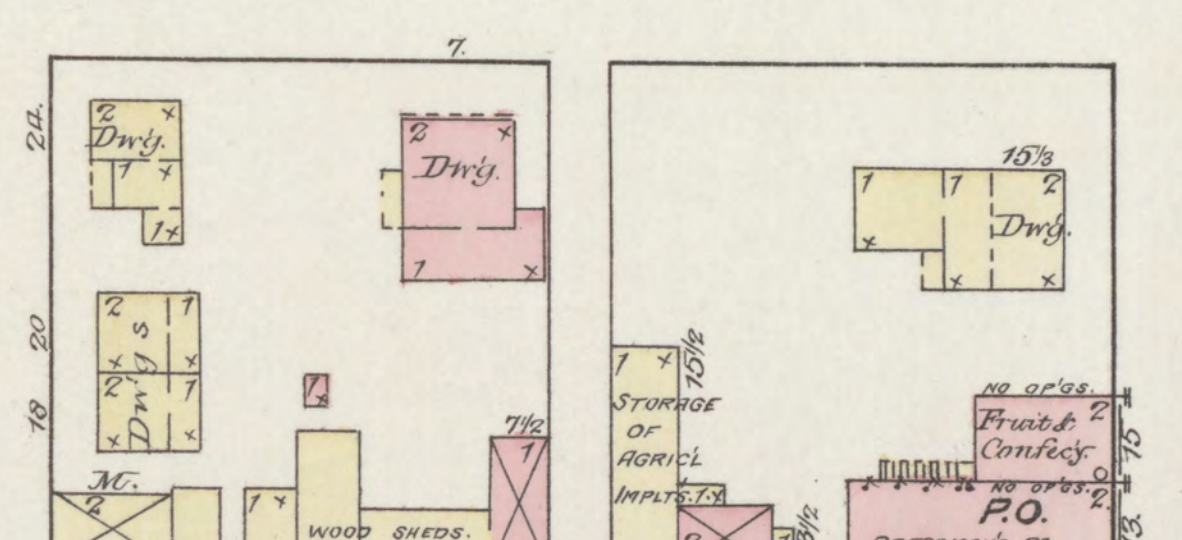
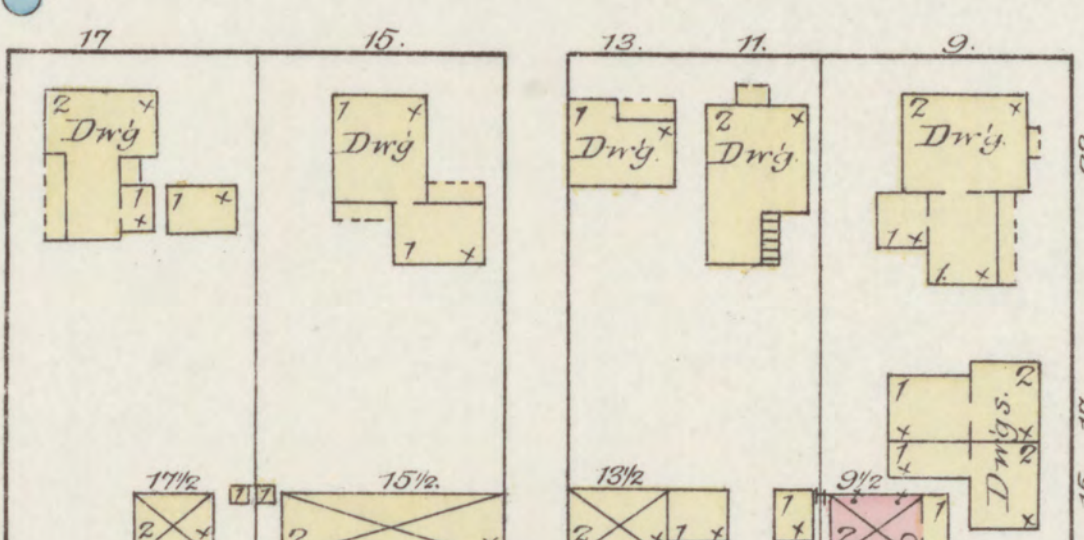
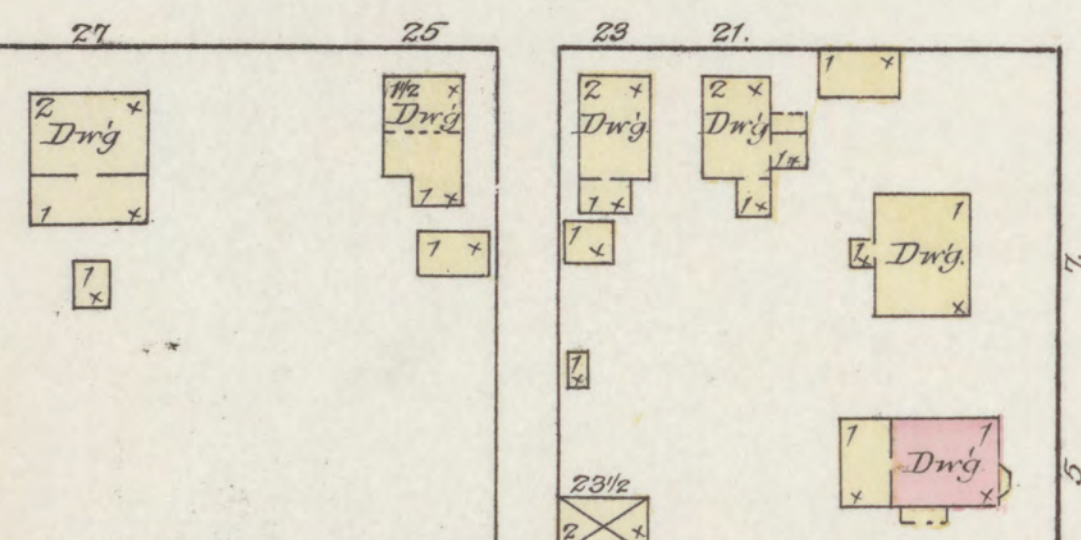
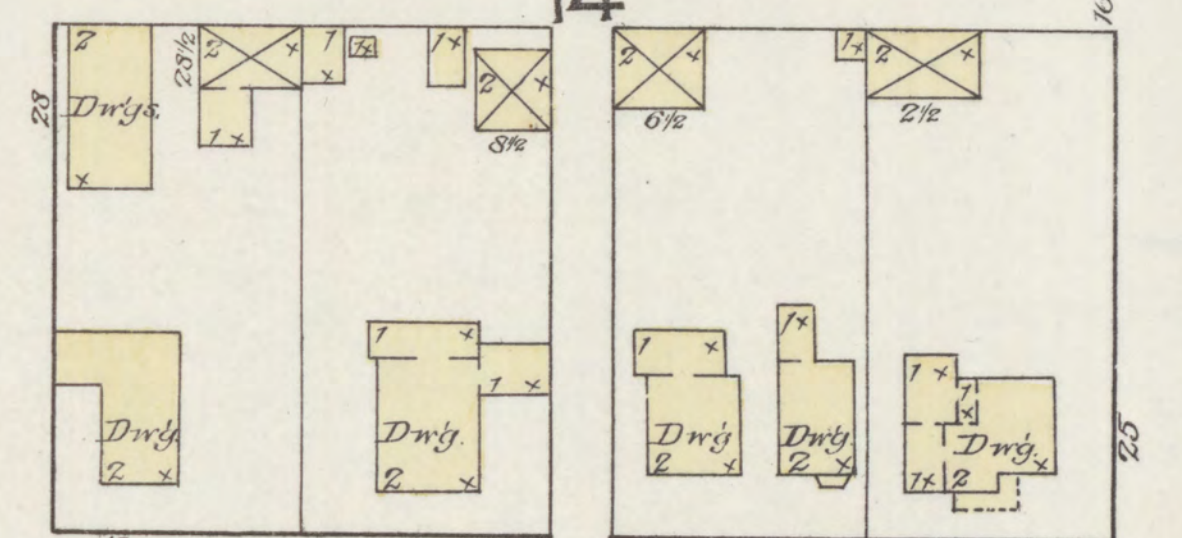
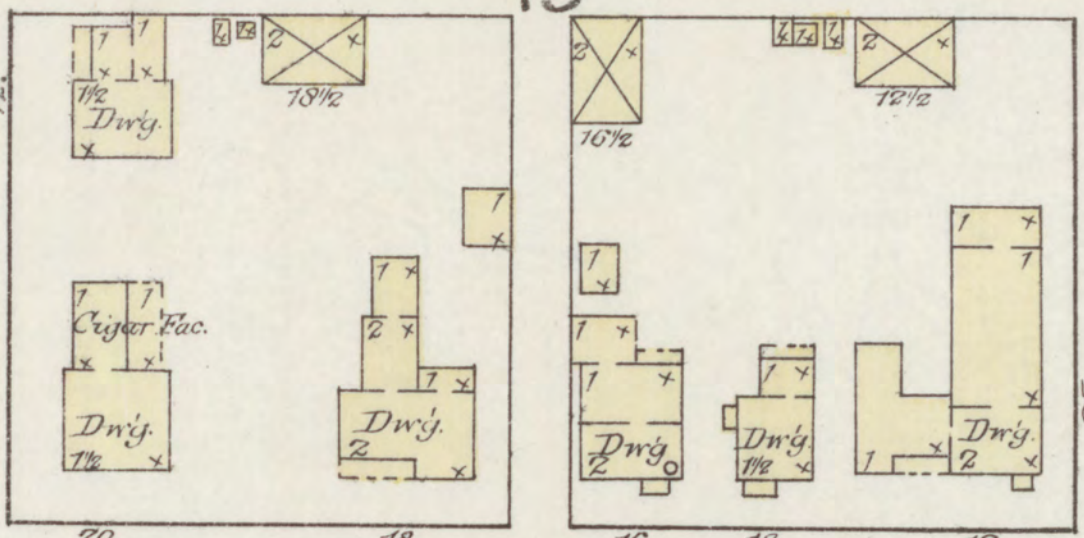
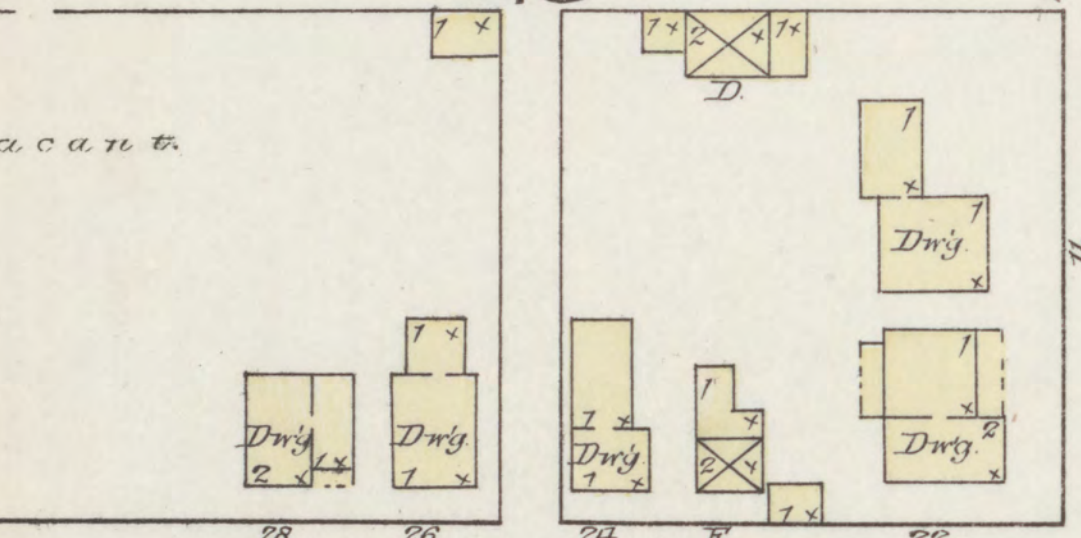
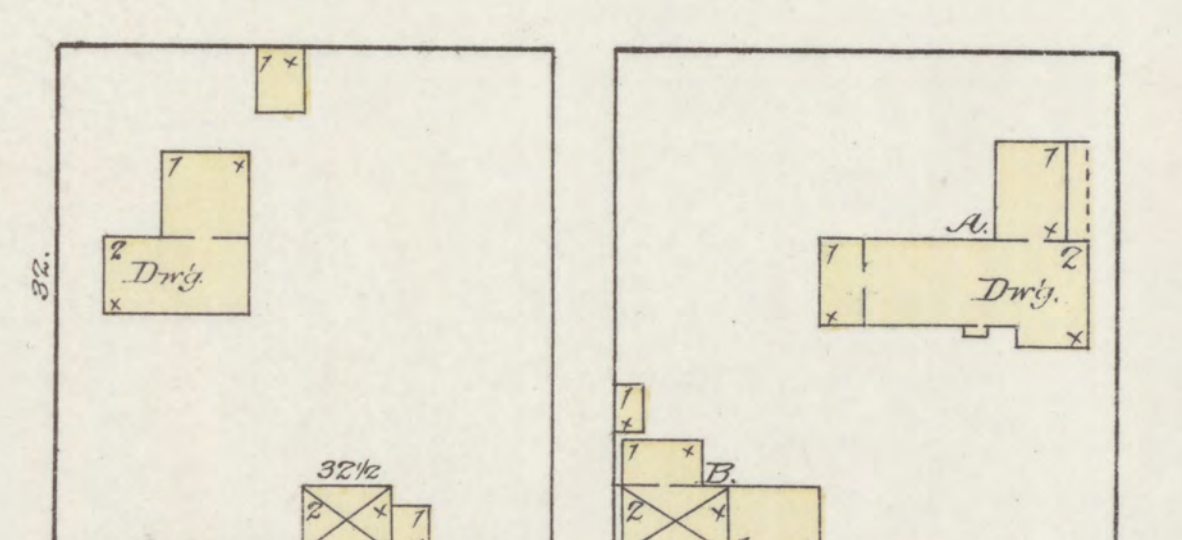
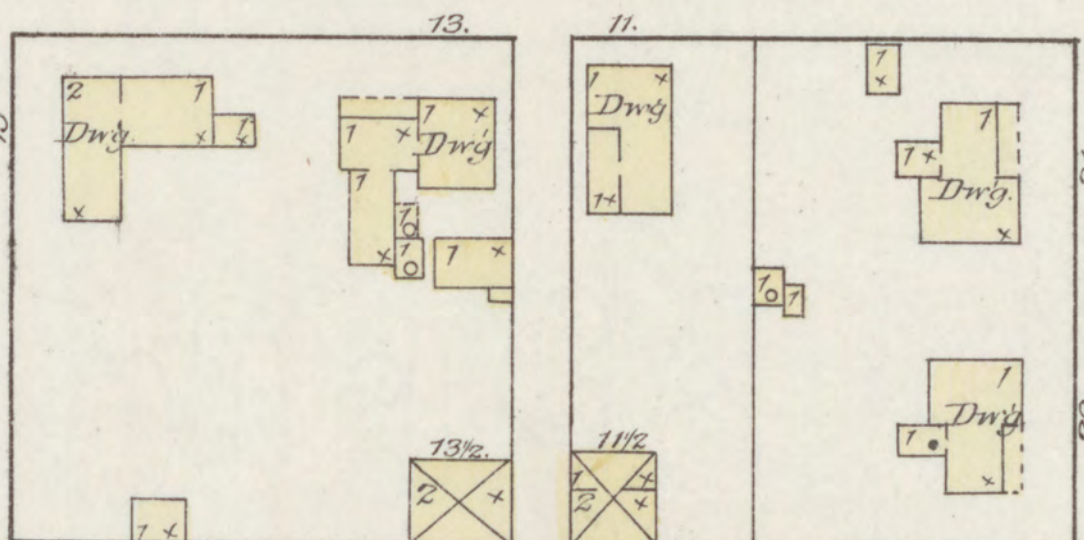
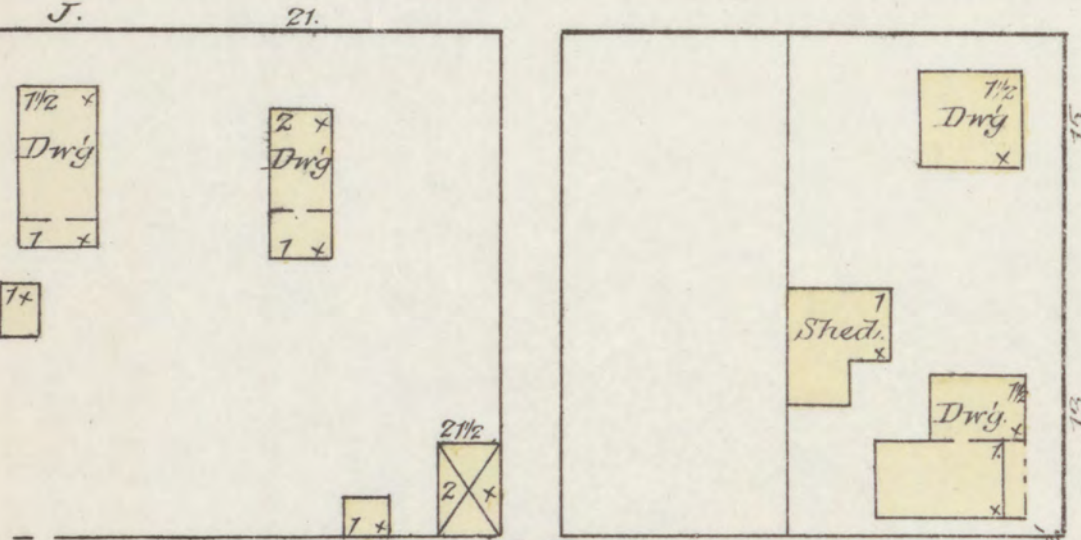
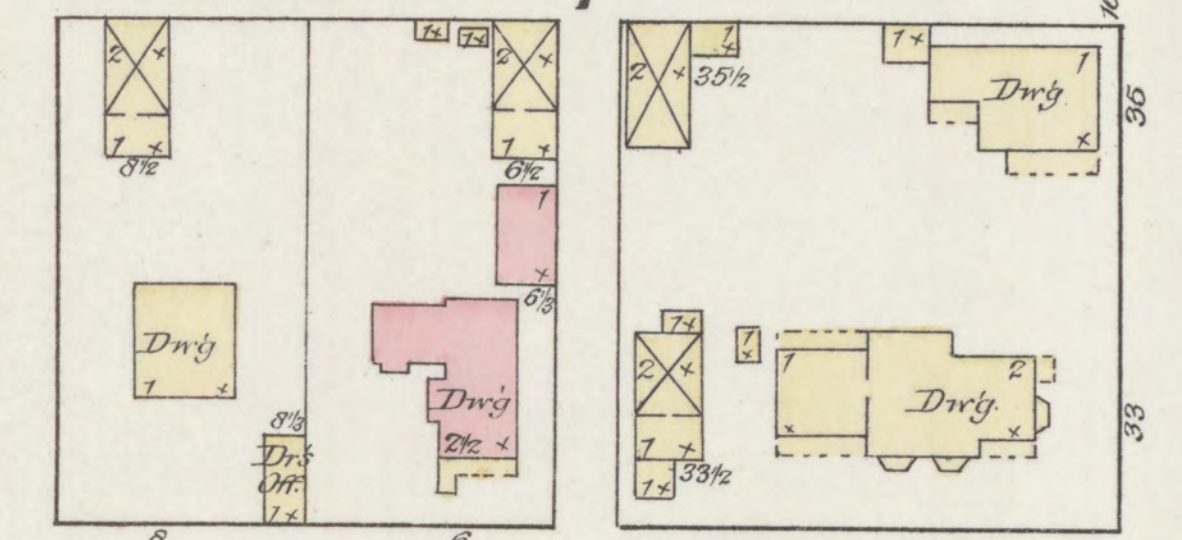
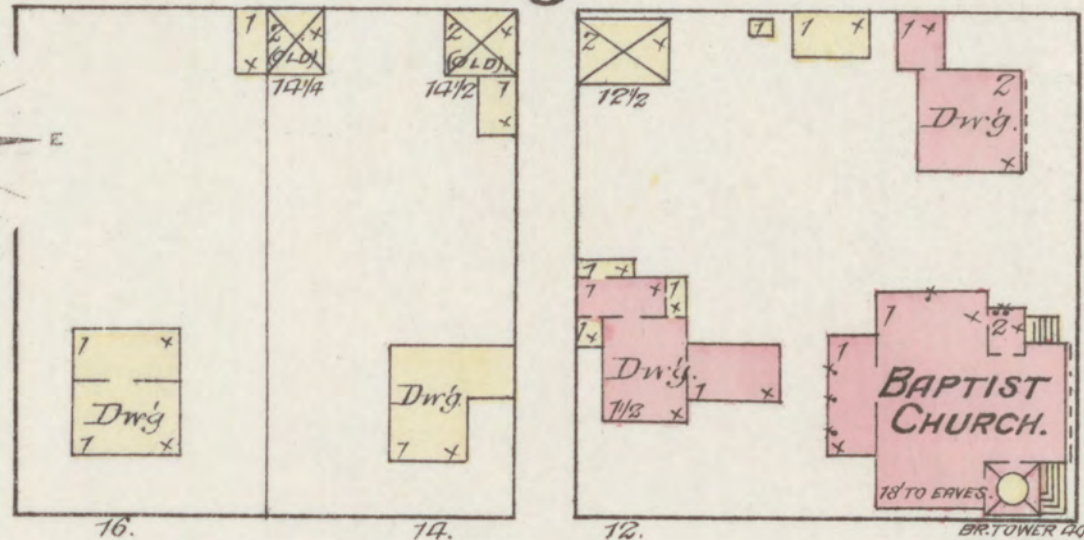
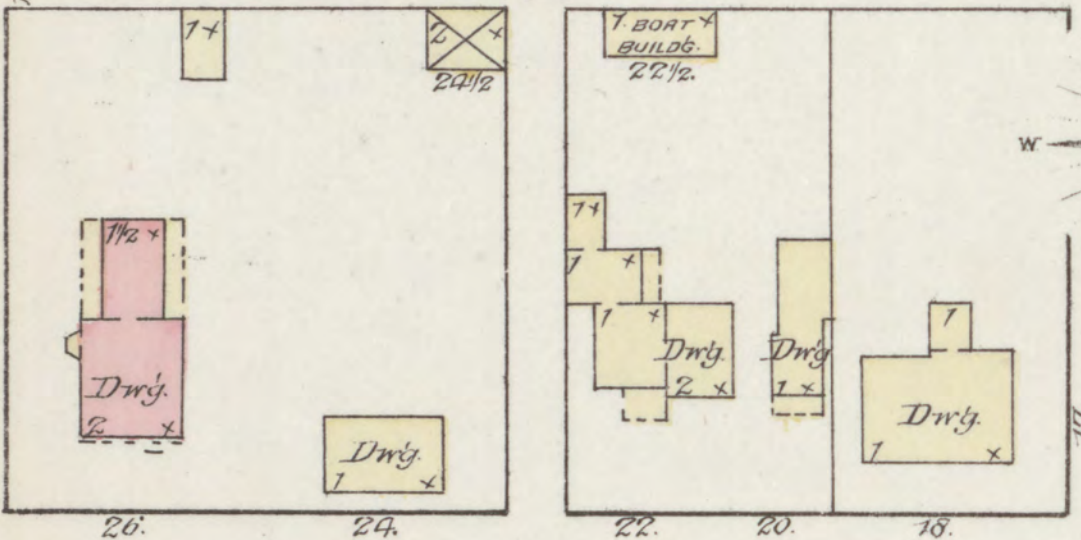
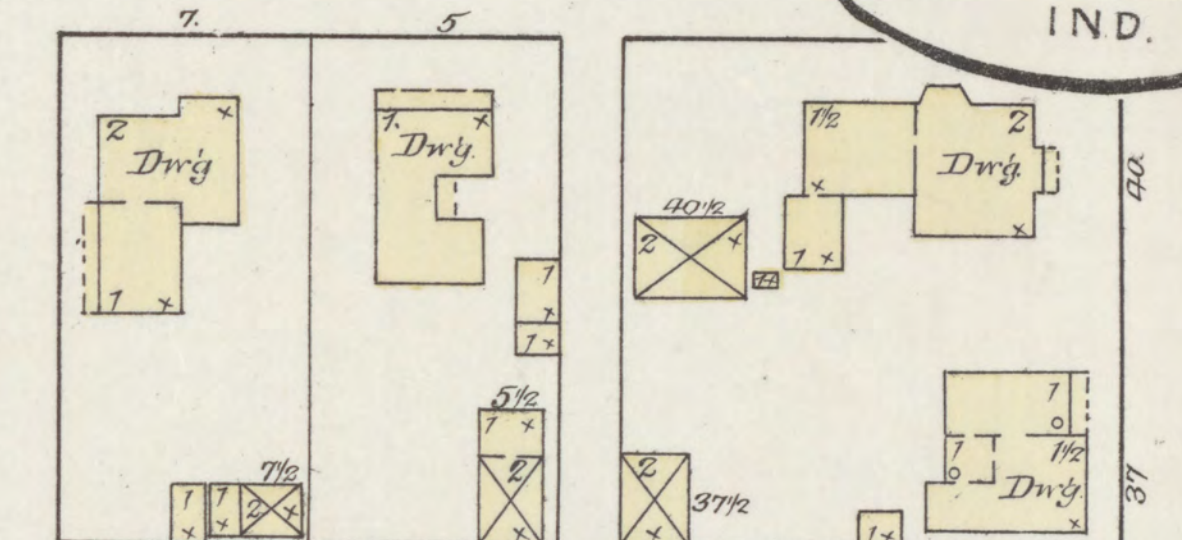
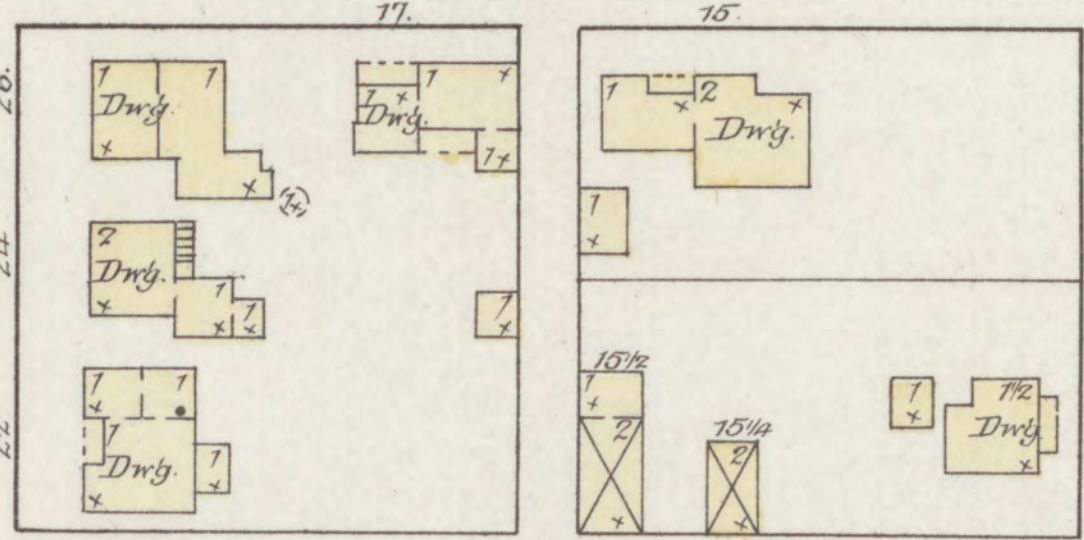
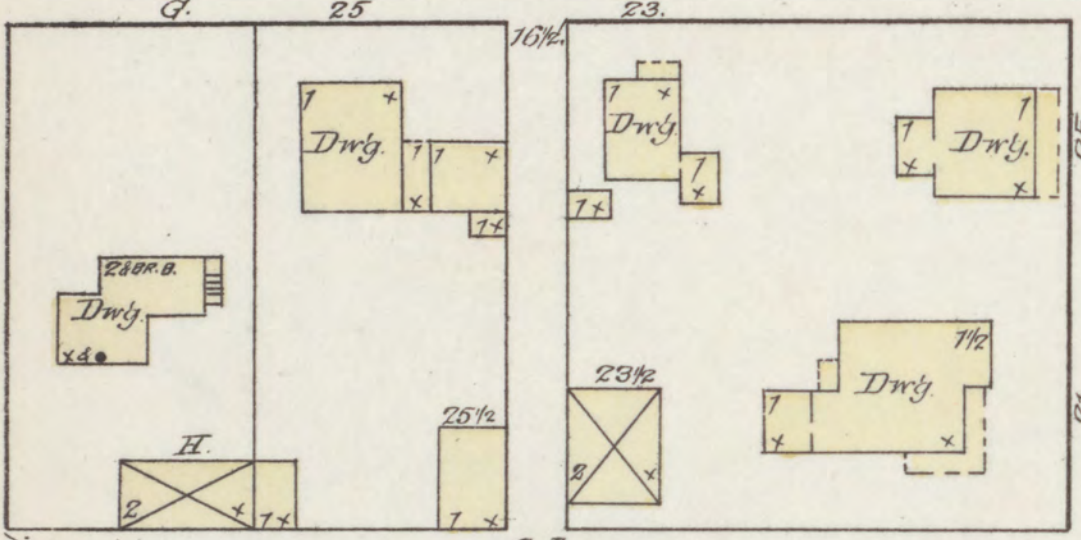
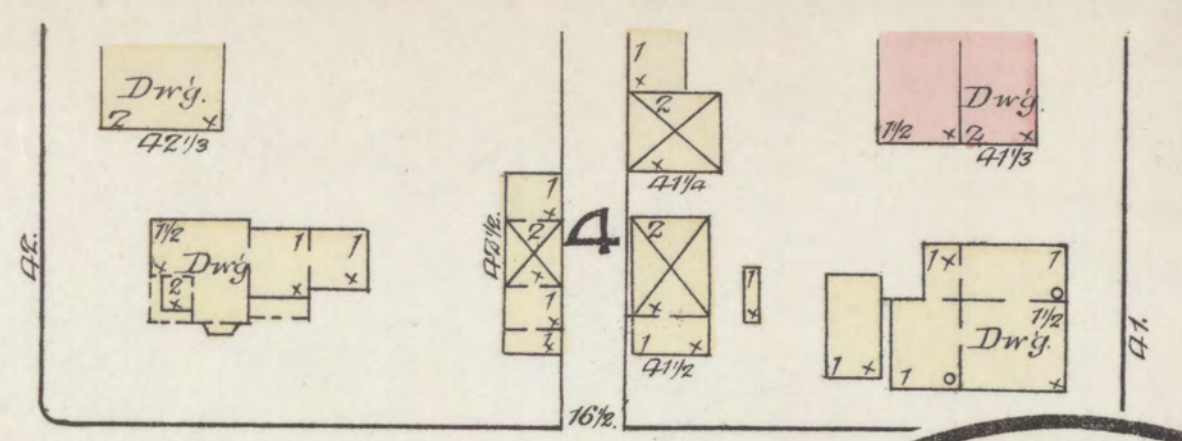
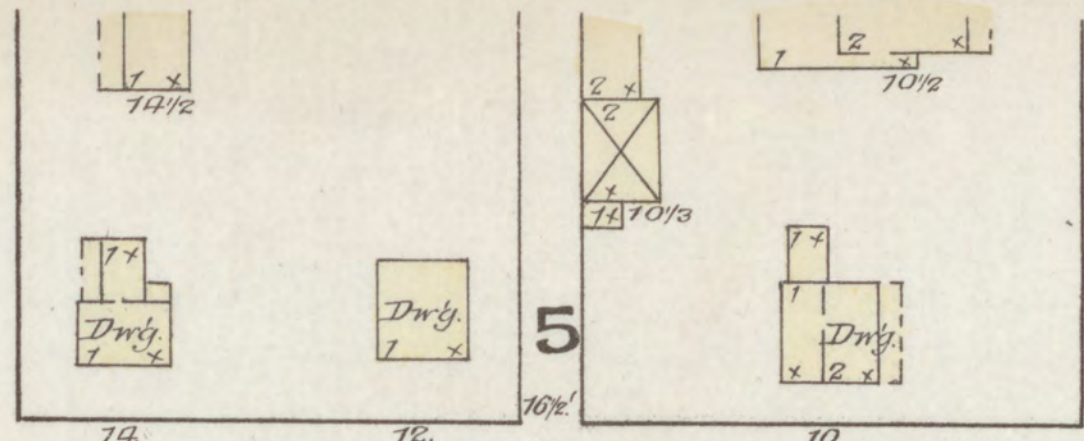
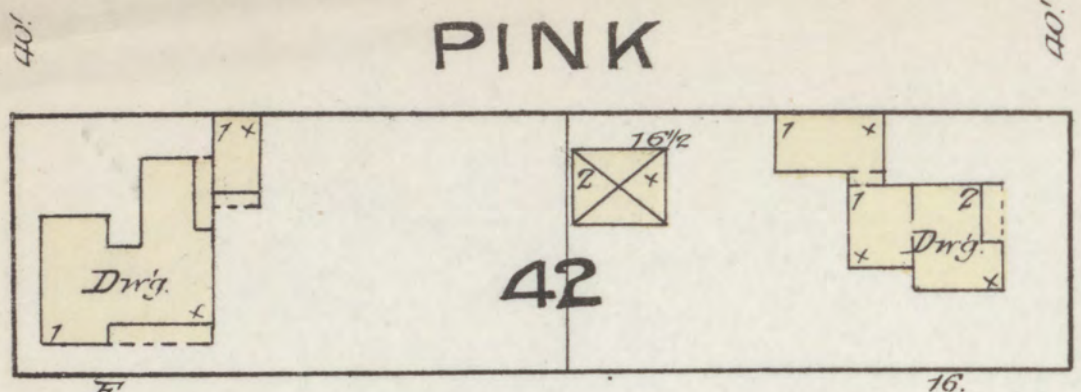


S. WASHINGTON



NO EXPOSURE

MAY 1886
VALPARAISO
IND.



N. NAPOLEON

N. LAFAYETTE

N. WASHINGTON

W. ERIE

W. CHICAGO

W. JEFFERSON

W. MAIN

SEE SHEET No. 7

No. 5.

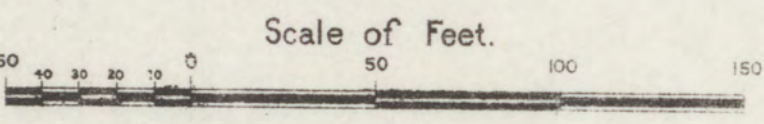
SHEET

SEE

No. 2.

SHEET

SEE

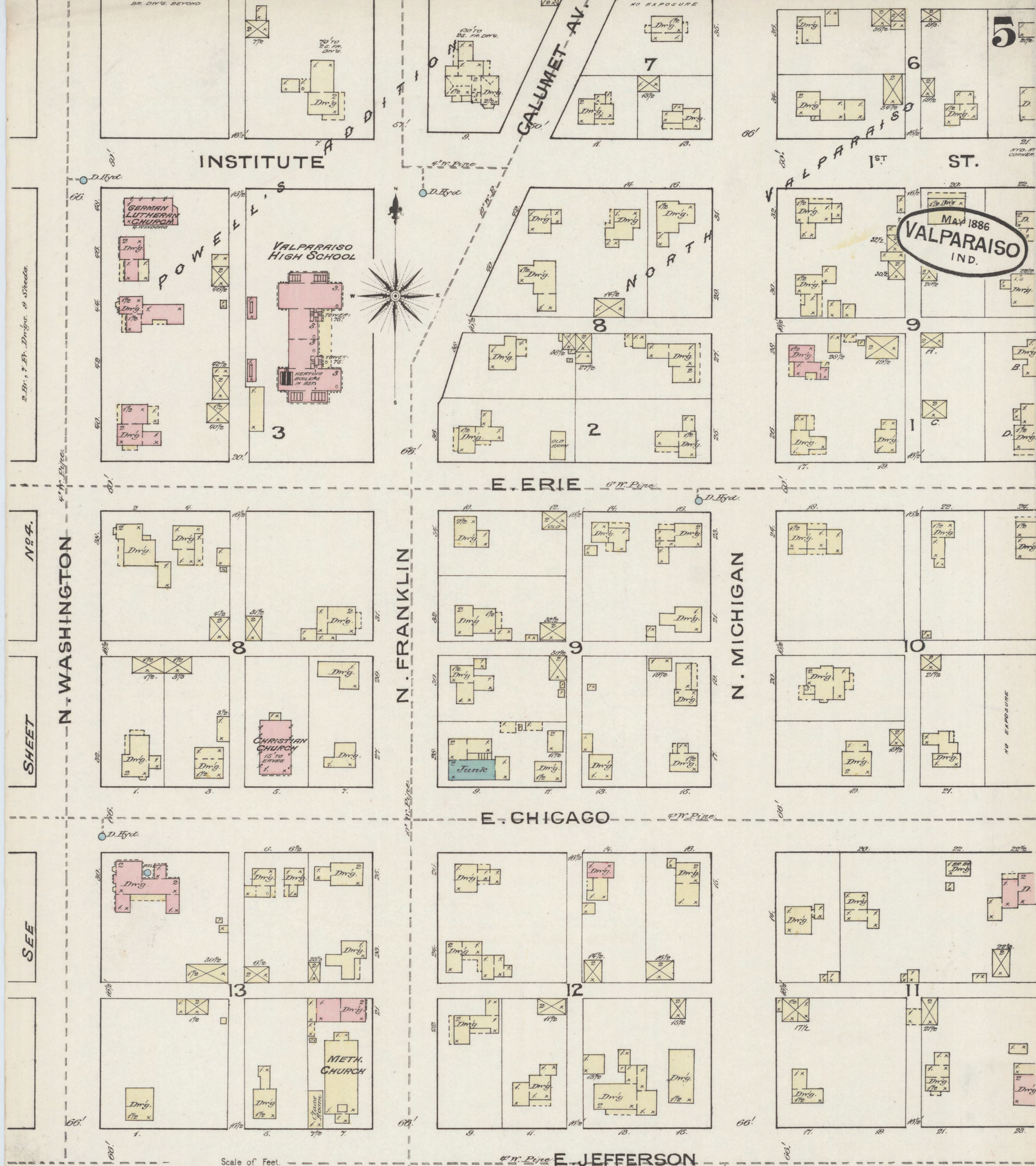


SEE

SHEET

No. 3.

Map Division
Library of Congress
1886



2. Dr., 7. Fr. Dw'gs. & Stables.

No. 4.

SHEET

SEE

SEE

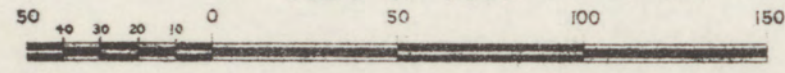
INSTITUTE

E. ERIE

E. CHICAGO

E. JEFFERSON

Scale of Feet.



MAY 1886
VALPARAISO
IND.

5

ST.

1

10

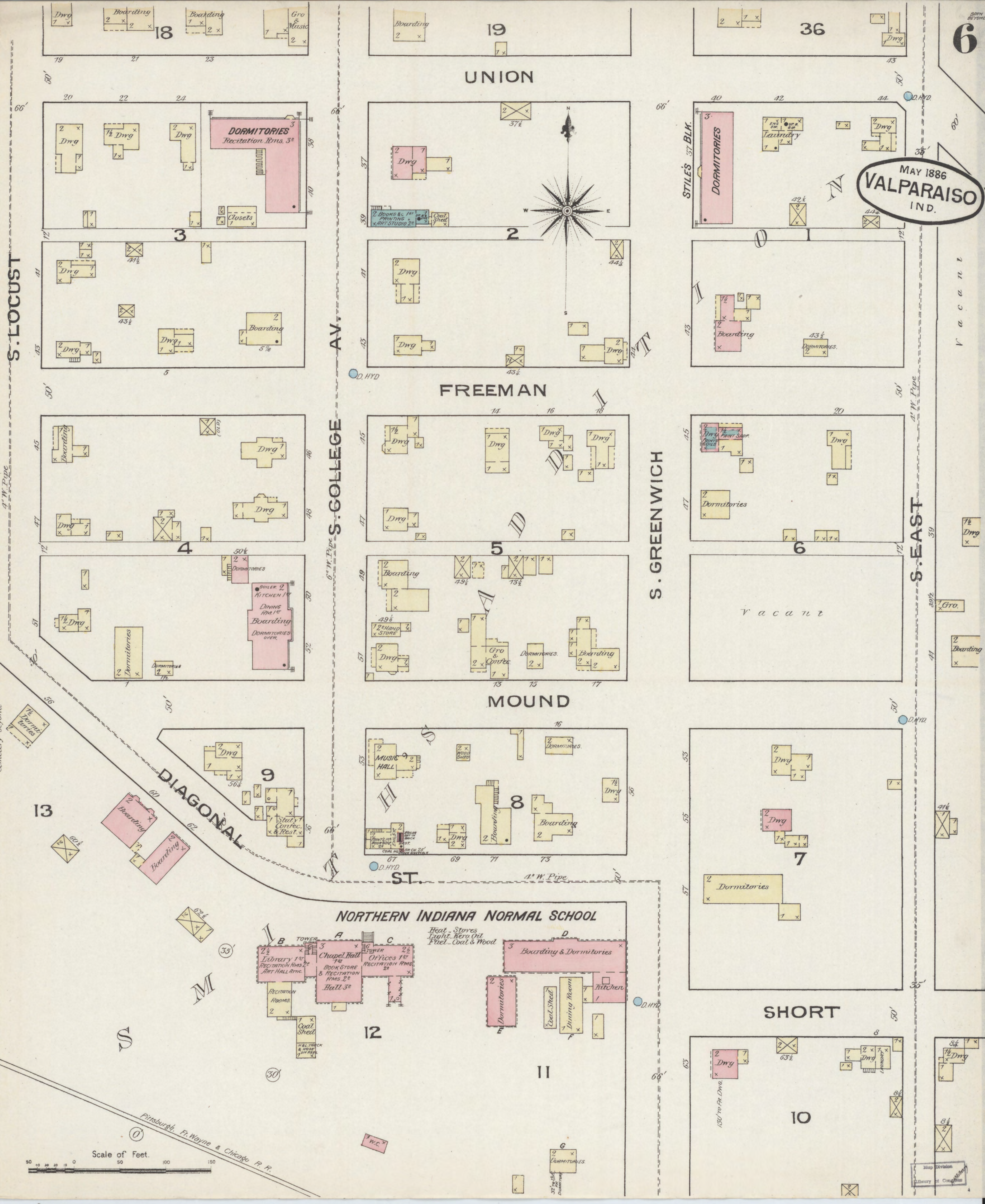
20

11

No. 2.

Map Division
Library of Congress

MAY 1886
VALPARAISO
IND.



UNION

FREEMAN

MOUND

NORTHERN INDIANA NORMAL SCHOOL

SHORT

S. LOCUST

AV.

S. COLLEGE

S. GREENWICH

S. EAST

Scale of Feet.

Pittsburgh, Ft. Wayne & Chicago P. R.

MAY 1886
VALPARAISO
IND.

