

SUMAN OIL & GAS CO. L-79

(INCORPORATED)

SUMAN IND.

LOT LEASES 165x165

Scale 1"=30 rods.

General Office Room 227 Opend Bldg.
Gary, Ind.

RECEIVED FOR RECORD

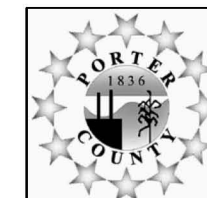
Nov. 18. 1916 - 8:44 A.M.

RECORDED IN BOOK L

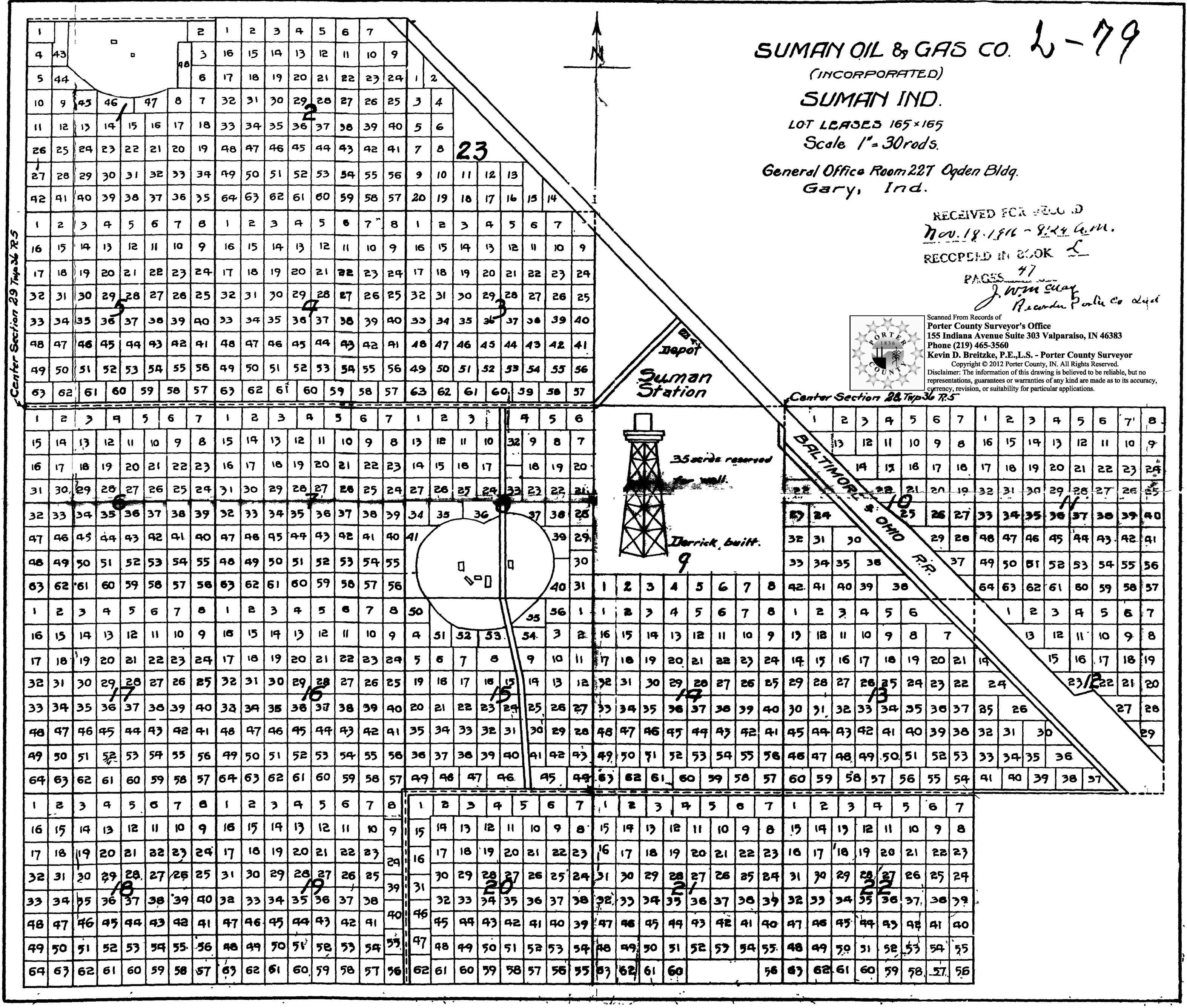
PAGES 47

J. W. M. Sway

Recorder Public Co. Ind.



Scanned From Records of
Porter County Surveyor's Office
155 Indiana Avenue Suite 303 Valparaiso, IN 46383
Phone (219) 465-3560
Kevin D. Breitke, P.E., L.S. - Porter County Surveyor
Copyright © 2012 Porter County, IN. All Rights Reserved.
Disclaimer: The information of this drawing is believed to be reliable, but no
representations, guarantees or warranties of any kind are made as to its accuracy,
agency, revision, or suitability for particular applications.



L-79