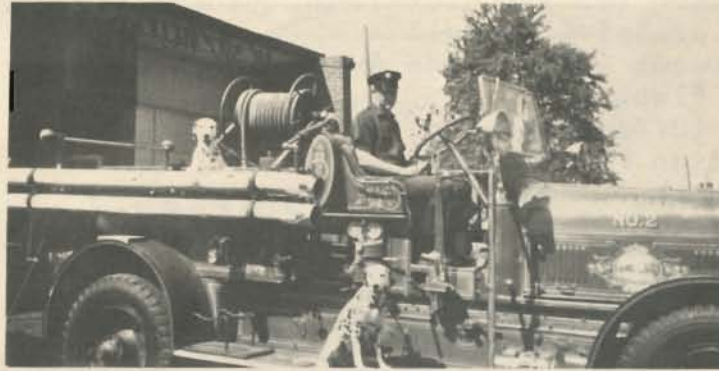


# The Guide to VALPARAISO

1971



CITY SERVICES--QUICK REFERENCE LIST

For Emergency Calls:

Crime Alert . . . . . 462-3222  
 Fire . . . . . 462-2131  
 Police (City) . . . . . 462-2135  
 Police (County) . . . . . 462-2115  
 Police (State) . . . . . 926-1102  
 FBI (Indianapolis) . . 317-639-3301

City Hall . . . . . 462-1161  
 Building Inspector . . . . . 462-1161  
 City Engineer . . . . . 462-1161  
 Clerk-Treasurer . . . . . 462-1161  
 Mayor's Office . . . . . 462-1161  
 Parks and Recreation (53 1/2 Franklin) . . . . . 462-5144  
 Police (Personal calls) City Hall . . . . . 462-0717  
 Sanitation Department (16 Indiana Ave.) . . . . . 462-5461  
 Sewage Treatment Plant . . . . . 462-8919  
 Water Department (Office--16 Indiana Ave.) . . . . . 462-6174  
 Pumping Station Flint Lake . . . . . 462-4542  
 Emergency Calls . . . . . 462-4542  
 Time-Temperature . . . . . 464-0123  
 Road Conditions . . . . . 926-1102

PORTER COUNTY OFFICES

Assessor (Court House) . . . . . 462-7272  
 Auditor (Court House) . . . . . 462-8451  
 Clerk (Court House) . . . . . 462-3841  
 Coronor's Office (104 Roosevelt Rd.) . . . . . 462-0031  
 County Extension Office (Court House) . . . . . 464-1007  
 County Home RR 6 (State Road 2) . . . . . 462-4258  
 Department of Public Welfare (210 Elm) . . . . . 462-2112  
 Health Department (552 W. Lincolnway) . . . . . 462-0538  
 Highway Department (State Road 2) . . . . . 462-7317  
 Highway Department Supervisor (Court House) . . . . . 462-5751  
 Historical Museum (Court House) . . . . . 462-2233  
 Jail (102 Indiana Ave.) . . . . . 462-2115  
 Judge's Chambers Pivarnik, Alfred J. (Court House) . . . . . 462-8811  
                                 Nixon, Russell A. (Court House) . . . . . 462-8921  
 Planning Commission (Court House) . . . . . 462-8571  
 Probation Officer (Court House) . . . . . 462-3638  
 Prosecuting Attorney's Office (51 Franklin) . . . . . 462-2149  
 Recorder (Court House) . . . . . 462-8971  
 Superintendent of Schools . . . . . 462-5841  
 Surveyor (Court House) . . . . . 462-8719  
 Treasurer (Court House) . . . . . 462-3917  
 Veterans Affairs Office (Court House) . . . . . 462-8720  
 Voter Registration (Court House) . . . . . 462-3013  
 Weights and Measures, Department of (Court House) . . . . . 462-5751

UNITED STATES GOVERNMENT OFFICES

Agriculture Stabilization Conservation (1208 Evans) . . . . . 462-7515  
                                 Soil Conservation Service (1208 Evans) . . . . . 462-6541  
 Army Recruiting Station (204 Lincolnway) . . . . . 462-3789  
 National Lakeshore Headquarters . . . . . 926-1121  
 Post Office (166 Lincolnway) . . . . . 462-2189  
 Selective Service (53 Michigan) . . . . . 462-3720  
 Social Security System (700 N. Calumet) . . . . . 464-1015  
 Transportation, Department of . . . . . 462-5906

In this directory we hope you will find information about Valparaiso and Porter County helpful to you. The directory is intended to give you needed information about the various phases of city life--schools, clubs, churches, government, business, recreation and cultural activities.

We welcome new residents, and extend our appreciation and thanks to the many citizens of this community who have helped Valparaiso to blend achievements of the past with a bright look toward the future.

We want to urge those of you who have not actively contributed to the community to become involved--vote at local elections, be active in our local organizations. May we also suggest another form of involvement you may not have considered: Shop in Valparaiso.

This could be a significant contribution to the community since this revenue derived from Sales Tax Income aids the city government in maintaining a high level of municipal services.

To what degree you are involved is up to you. But be involved!

Since 1924

## EDGERTON'S TRAVEL SERVICE

*Recently Named One of the Top 42 Agencies in the Nation*

**Air - Rail - Tours - Cruises**

*No Service Charge*

**122 East Lincolnway — Valparaiso, Indiana  
462-3672 or 462-4086**

**8:30 - 5:00 Monday - Friday — Sat. until Noon**



MAYOR BRYCE BILLINGS

### VALPARAISO GOVERNMENT

Representative democracy is provided through the elected Mayor and seven-member Council who are responsible for the legislation and policy-making of the City government. The Council exercises legislated powers for the city, and must pass on all appropriations of funds for city government.

H  
CHEZ  
L  
E  
N

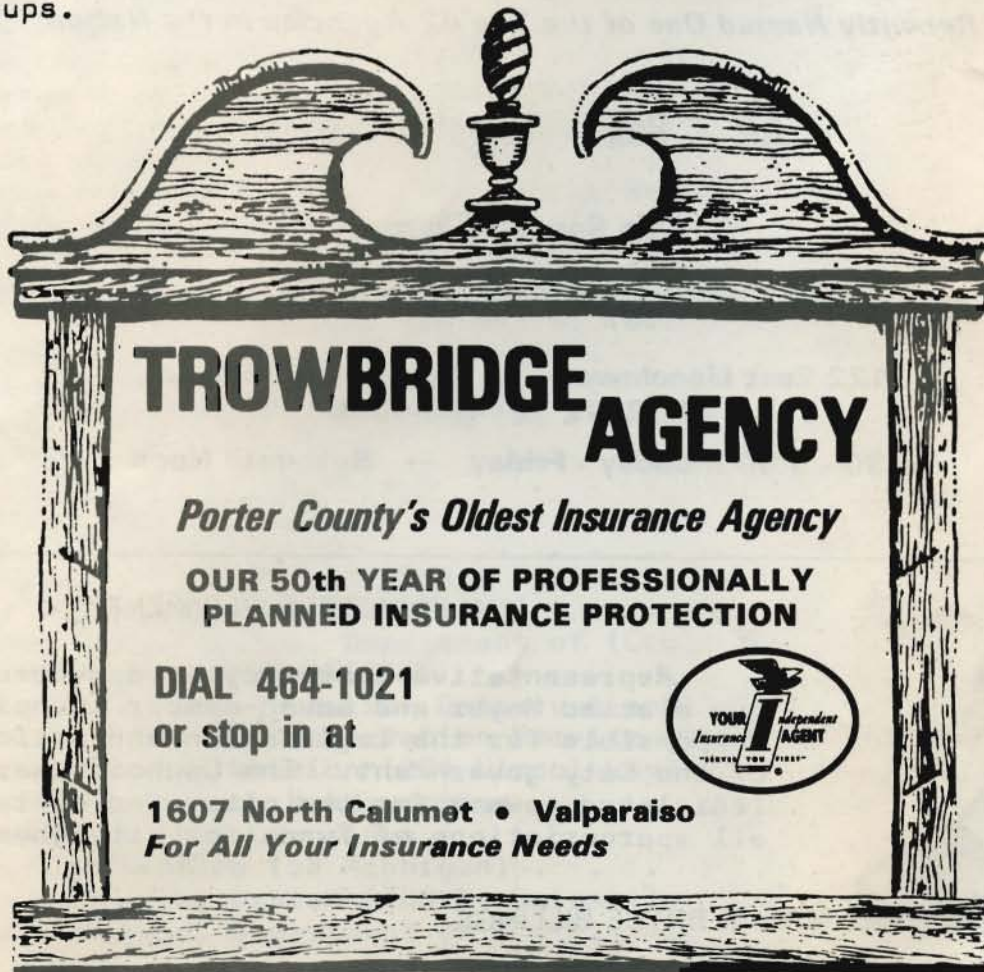
The state of Indiana has a 2% sales tax, and an Indiana adjusted gross income tax of 2%. The real property tax which includes total city, school, county and state real property tax for 1971 payable in 1972 is \$10.09 per \$100 of assessed valuation. Assessed value is established by state statute. Average assessment is one-third of the cash value. In Indiana there is also a personal property tax which is levied on items such as boats and farm equipment. These are assessed at one-third their average retail value. The tax rate is the same as the real property tax rate.

### LOCATION

Valparaiso is located 15 miles south of Lake Michigan and the new deep Port of Indiana, 55 miles southeast of Chicago, and 140 miles northwest of Indianapolis--the state capitol. The City is on U. S. Route 30 and State Roads 2 and 49. The Indiana Toll Road is 12 miles to the north. Valparaiso is a governmental, cultural, and economic center of Indiana's fastest growing county--Porter.

### AREA AND POPULATION

The City of Valparaiso encompasses approximately 7.5 square miles and has a population of 20,020 people (1970). Valparaiso is a third class city which gives it a three-mile buffer zone and more tax money from the state. This became effective in 1971 since the population passed the 20,000 mark. The people in Valparaiso are largely American born with a substantial German ancestry. As the seat of America's largest Lutheran University, there is also a representation from other nations, other areas of America, and minority groups.



**TROWBRIDGE AGENCY**

*Porter County's Oldest Insurance Agency*

**OUR 50th YEAR OF PROFESSIONALLY  
PLANNED INSURANCE PROTECTION**

**DIAL 464-1021**  
or stop in at

**1607 North Calumet • Valparaiso**  
*For All Your Insurance Needs*

YOUR **I**ndependent  
Insurance AGENT  
SERVING YOU FIRST

INDEX

	Page
Area and Population . . . . .	2
Attorneys . . . . .	19
Business Listings (Alphabetical and Categorical) . . . . .	30
Bus, Train, and Airline Schedules . . . . .	26
Chamber of Commerce . . . . .	22
Churches. . . . .	20
City Map. . . . .	17
City Park Location Map . . . . .	13
City Service Reference List . . . . .	.Inside front cover
Climate . . . . .	4
Downtown Store Location Map . . . . .	11
Elected Officials. . . . .	24
EMERGENCY NUMBERS. . . . .	.Inside front cover
Fire and Police Department Information. . . . .	9
Foreword. . . . .	1
History . . . . .	4
Hospital Information. . . . .	24
Indiana Dunes National Lakeshore. . . . .	15
Industrial Information . . . . .	28
Location. . . . .	2
Organizations . . . . .	19
Park and Recreation Information . . . . .	12
Parking Lot Location Map . . . . .	11
Points of Interest and Map of Porter County . . . . .	25
Polling Places. . . . .	21
Porter County Historical Museum . . . . .	9
Port of Indiana . . . . .	22
Post Office Hours and Information . . . . .	23
Public Library Hours and Information . . . . .	27
Radio, Newspapers, and TV . . . . .	23
Schools . . . . .	5
Selective Service System Office . . . . .	22
Social Security Office . . . . .	27
Taxation. . . . .	2
Valparaiso Driver's License Bureau Branch. . . . .	21
Valparaiso Government . . . . .	1
Valparaiso Technical Institute . . . . .	8
Valparaiso University . . . . .	5

See "Buzz" Nupnau  
at

462-8819  
1401 E. Lincolnway

**VALPO LIQUOR STORE**

**For VALPO'S finest and most complete selections of Beer, Wine, Liquor, Cordials**

**New this year will be a complete assortment of CHEESES and an expansion of our IMPORTED WINES selection. Let us supply the kegs and tapping equipment for your next party.**

**AND INTRODUCING**

**Buzz's Valpo School Retailers**

*for*

**for all of your sportswear and party favor needs**

The climate is mild, but has four well-defined seasons. The mean annual temperature is 49.2 degrees Fahrenheit. The average annual rainfall is 38.5 inches. Summers see extensive use of area beaches, parks, and outdoor activities. Winter permits skiing, tobogganing, and ice skating activities.

## HISTORY

The site of the present city of Valparaiso was included in the purchase of the land of the Potawatomi Indians by the U. S. government in 1832. The first settler in the area was a French-Canadian, Joseph Bailley, who in 1822 established a thriving fur trading post on the shore of Lake Michigan about 12 miles north of the site of the future city.

In 1836, Porter County was formed, including the territory now comprising both Porter and Lake Counties, with Portersville as the county seat. In 1837, at the suggestion of local residents, the Indiana General Assembly changed the name of the county seat to Valparaiso, which means "Vale of Paradise" in Spanish.

Porter County was named in honor of Commodore David Porter of the United States Navy, whose famous battle during the War of 1812, while in command of the "Essex," was fought near the harbor of Valparaiso, Chile. Therefore, Valparaiso was considered an appropriate name for the county seat of Porter County.

Valparaiso was incorporated as a town in 1850, with 520 residents, and received its charter as a city in 1865. Valparaiso early became a leader in the field of education. In 1876, it had the largest normal school in America, with an enrollment of 1,100. The name of the school was changed to Valparaiso University, and in 1925, it was purchased by the Lutheran University Association. The student body has grown to over 4,000 students.



*the Palmers*  
HOTEL FOR CHILDREN

**Temporary  
CHILD CARE CENTER**

by  
The HOUR, DAY  
WEEK-END or WEEK

R.R. 2 Smoke Rd., Box 37  
Valparaiso, Ind. 46383



**VALPO BIKE & LOCK SHOP**

**KEYS MADE      BIKES REPAIRED**

20 North Franklin St.      462-6041

12 Jefferson after Jan. 15, 1972



Thomas Jefferson Elementary School

Valparaiso public schools are highly rated and fully accredited. A ratio of one teacher to 24 pupils assures your children of more individualized instruction and attention. Presently Valparaiso has nine grade schools, two junior high schools, and one high school. A new 9.5 million dollar high school is under construction and completion is expected by the summer of 1972. The new high school will have a capacity of 2,000 students.

More than 48% of Valparaiso's teaching staff holds a Master's degree or the equivalent thereof, and 95% are recognized as career teachers. These advantages are one reason why more than 40% of Valparaiso's high school graduates go on to higher education in colleges and universities across the nation. Due to a progressive program of meeting our educational needs as they arise, the majority of school buildings are modern and well equipped.

For those interested in private education, Lutheran and Catholic elementary parochial schools are located in Valparaiso.

Valparaiso residents are also fortunate to have excellent schools for the handicapped and mentally retarded. The special education classes have recently been placed under the newly-instituted county program

**Washburn**  
**REALTORS**

**COMPLETE  
REAL ESTATE SERVICE**

Member of Multiple Listing Service  
Member of National Computer Service

**VALPO 462-5218**      **GARY NO TOLL 882-1314**

**451 W. Lincolnway  
(corner Lincolnway & Campbell)  
Valparaiso**

for handicapped children. This will now give these students more available instruction and better equipped facilities.

Valparaiso has two of its own institutions of higher learning--Valparaiso University and Valparaiso Technical Institute. There is also easy access to Purdue University--Westville and Calumet campuses (10 min.), Indiana University Extension (20 min.), and St. Joseph's College--Northwest Campus (20 min.).

**VALPARAISO UNIVERSITY**

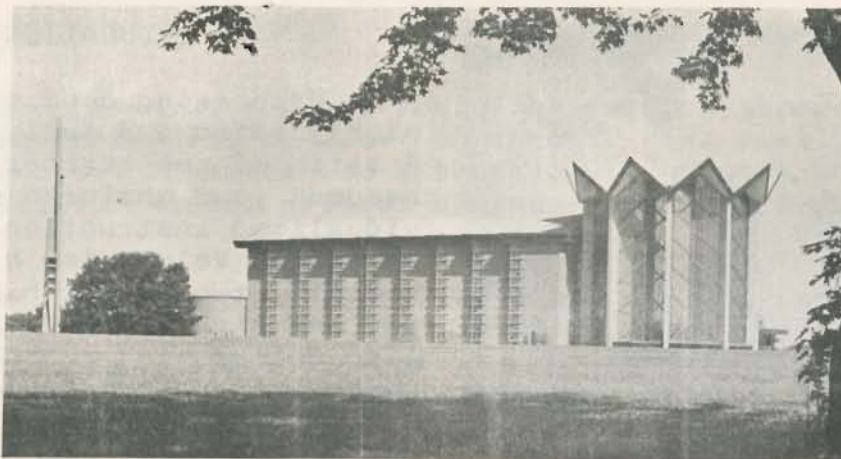
Valparaiso is noted as the home of Valparaiso University which was founded in 1859. The present administration, the Lutheran University Association, has operated the school since 1925. The University

**FIRST NATIONAL BANK**  
VALPARAISO, INDIANA  
PORTAGE, INDIANA

OPERATING CONTINUOUSLY SINCE 1899



Immanuel Lutheran School



Valparaiso University Chapel

has a daytime enrollment of over 4,000.

Valparaiso University is accredited by the North Central Association of Colleges and Secondary Schools, the American Bar Association, the Council of Medical Education and Hospitals of the American Medical Association for Pre-medical education, the Indiana State Board of Education and the Engineers Council for Professional Development.

Meeting all standard requirements for accreditation, the University is a member of the Association of American Colleges, the American Council on Education, the Lutheran Education Association, the Association of American Law Schools, the Council of Social Work Education, and the American Association of University Women.

The University is broken down into seven units: the College of Arts and Sciences, Christ College, the College of Engineering, the School of Law, the College of Business Administration, the College of Nursing, and the Graduate Division. Seven degrees are granted in the College of Arts and Sciences, and three in the College of Engineering.

Approximately 450 courses are taught with majors available in over

**SIEVERS**

**Rexall DRUGS**

*Prescriptions*

Filled Promptly And Accurately  
Over One Million "New"  
Prescriptions Filled

We Give S & H Green Stamps

ABDOMINAL SUPPORTS  
TRUSSES - SUPPORT HOSE  
CONVALESCENT AIDS

SERVING PORTER COUNTY  
FOR OVER 70 YEARS'

Five Registered  
Pharmacists To Serve You

**FREE DELIVERY**

**462-4381**

109 LINCOLNWAY - VALPARAISO

**Nupnau Insurance Agency**

Hartford Group - Great American  
St Paul Fire & Marine  
American States - Reliance  
**COMPLETE INSURANCE SERVICE**

PAUL J. NUPNAU

First National Bank Bldg Valpo... 462-4334  
Residence Valpo ..... 462-1365

SHAUER'S

**Premier Theatre**

Downtown Valparaiso

For Information  
Both Theatres  
Phone 462-3012

SHAUER'S

**49er Drive In Theatre**

5 Miles North of Valparaiso on St. Rd. 49



# JONES JEWELRY



KEEPSAKE & ART CARVED

"JEWELRY FOR ALL OCCASIONS"



*Personalized*

WEDDING



WEDDING ANNIVERSARY



**462-7206**

110 LINCOLNWAY — VALPARAISO

INVEST IN HAPPINESS —



A HOME OF YOUR OWN

## MERCURY DRIVE-IN CLEANERS

*"Clean Clothes Wear Longer"*

Plant - 356 West Lincolnway

462-6533

thirty fields. The University also has co-operative agreements with several leading professional schools. Valparaiso University has two overseas centers--one in Cambridge, England, and the other in Reutlingen, Germany. These centers offer students a chance to broaden their experience through extensive travel, personal contact and day-by-day living in a different cultural environment.

Valparaiso University and the Lutheran Deaconess Association cooperate in the education of women as deaconesses for the Church. Deaconess Ministry is a notable opportunity for the kind of woman who is seeking for a way to invest her life in service to God and people. Deaconess Ministry is many things. It is an attitude, a relationship, a commitment, a specific vocation. It is ministry to people in parishes, institutional missions, universities and colleges, welfare agencies and foreign missions.

Deaconess Ministry is made possible through the Lutheran Deaconess Association. The Deaconess Association is made up of individuals, organizations, and congregations who support the program through voluntary contributions. The Association has a Board of Directors together with an Executive Director and Director of Development who assume the responsibilities for the educational program, placement of graduates, student recruitment, public relations and fund-raising. The Board certifies the graduating deaconess to the church for placement. Final decision on the placement is made by the Council of Presidents of The Lutheran Church - Missouri Synod.

8 The Deaconess Education Program is located on the campus of Valparaiso University. It is a five-year program--four years of academic work and one year of internship. Students graduate with a major in theology.

Upon graduation Deaconesses become members of the Lutheran Deaconess Conference. This Conference, in turn, has membership in the North American Deaconess Conference, an interdenominational organization of Deaconesses in the United States and Canada. The Lutheran Deaconess Conference is also a member of the international organization of Deaconesses called the DIAKONIA.

Currently the graduates of Deaconess Ministry at Valparaiso University serve in more than half of the states in the United States, in Canada, Hong Kong, Japan, New Guinea, and India.

The motto of Deaconess Ministry is "Faith and Service in Christ."

### VALPARAISO TECHNICAL INSTITUTE

Valparaiso Technical Institute is nestled in a woodland area near the western city limits of Valparaiso. The campus provides an ideal setting for intellectual growth and cultural enrichment. VTI has an enrollment of approximately 350 students. The school offers specialized training in automation, computers, missile guidance and control systems, television, industrial electronics, communications, and broadcasts. The Institute has a small friendly campus with large lawns and wooded areas. Campus life is varied with many interesting extracurricular activities and social events.



*Wellman*

- Dinner Theatre
- Cocktail Lounge
- Banquet Rooms
- Bowling Lanes
- Dining Rooms
- Holiday Inn

U.S. 30 West - Valparaiso, Ind. 46383

Phone 219-462-0563



**MANOR MOTEL**  
 U. S. Hwy. 30 at Ind. 49  
 Valparaiso, Indiana  
 Air Conditioned. Steam Heat. Tile Showers. Free Continental Breakfast. Free T.V. Opposite Valparaiso University Campus. Within walking distance of excellent restaurants.  
 Phone 462-7401

**BOB'S**  
**IN VALPO** *Pizza*

OPEN 7 DAYS  
 SUN. THROUGH THURS.  
 5 P.M. - 1 A.M.  
 FRI. & SAT. 5 P.M. - 2 A.M.

"WE CATER TO PIZZA PARTIES"

WE DELIVER *Call* WE DELIVER  
**462-5851**  
 306½ LINCOLNWAY - VALPO.



City Hall

**INDIANA**  
 HOME IMPROVEMENT

**SIDING & REMODELLING  
 SPECIALISTS  
 PRODUCTS BY USS**

60½ LINCOLNWAY  
 VALPARAISO, INDIANA  
 PHONE 462-5676

**FIRE AND POLICE DEPARTMENTS**

Valparaiso is well protected by very efficient, full time fire and police departments. The police department has 31 full time law enforcement officers, six part time officers, two crossing guards, one meter enforcement officer, and four detectives. Their equipment includes seven police cars, two of which have radar units, and two motorcycles. All of the vehicles are radio equipped.


The fire department has two fire stations. There are 28 firefighters and a fire chief. All of the men have fire phones in their homes. The fire equipment includes three pumpers, a combination pumper-ladder truck, a grass fire fighting truck, a tanker, an emergency vehicle, and a snorkel. The snorkel has a 75 foot beam. Good equipment and well-trained firemen and policemen are determining factors for Valparaiso residents' low insurance rates.

**PORTER COUNTY HISTORICAL MUSEUM**


The Porter County Historical Museum is located on the top floor of the Court House. The Museum contains items of interest from Valparaiso and Porter County. The Museum is open on Tuesday, Wednesday, and Friday from 10:00 a.m. to 4:00 p.m. Admission is free of charge.

**North Side Daisy Car Wash**

1607 N. Calumet  
 Valparaiso, Ind.  
 Gas & Service 462-0616

  
**Jack's Standard**  
 1501 N. Calumet  
 Valparaiso, Ind.

7 AM — 10 PM U-Haul Trailers 462-9242



**ALLANSON INSURANCE INC.**  
 4 INDIANA AVENUE / VALPARAISO, INDIANA 46383 / AREA 219 462-5106

Russell Harter Don Driver

# How to build a useful citizen

You start with a boy  
about eight years old.

You teach him how to  
use his head and his hands to build things.

You teach him self-reliance with camping trips and hikes. You put him  
on a team to learn about fair play, sportsmanship, and competition.

You teach him about love for  
his God, his country,  
and his fellow man.

That's how Scouting  
tries to build  
useful citizens.

And it's working!

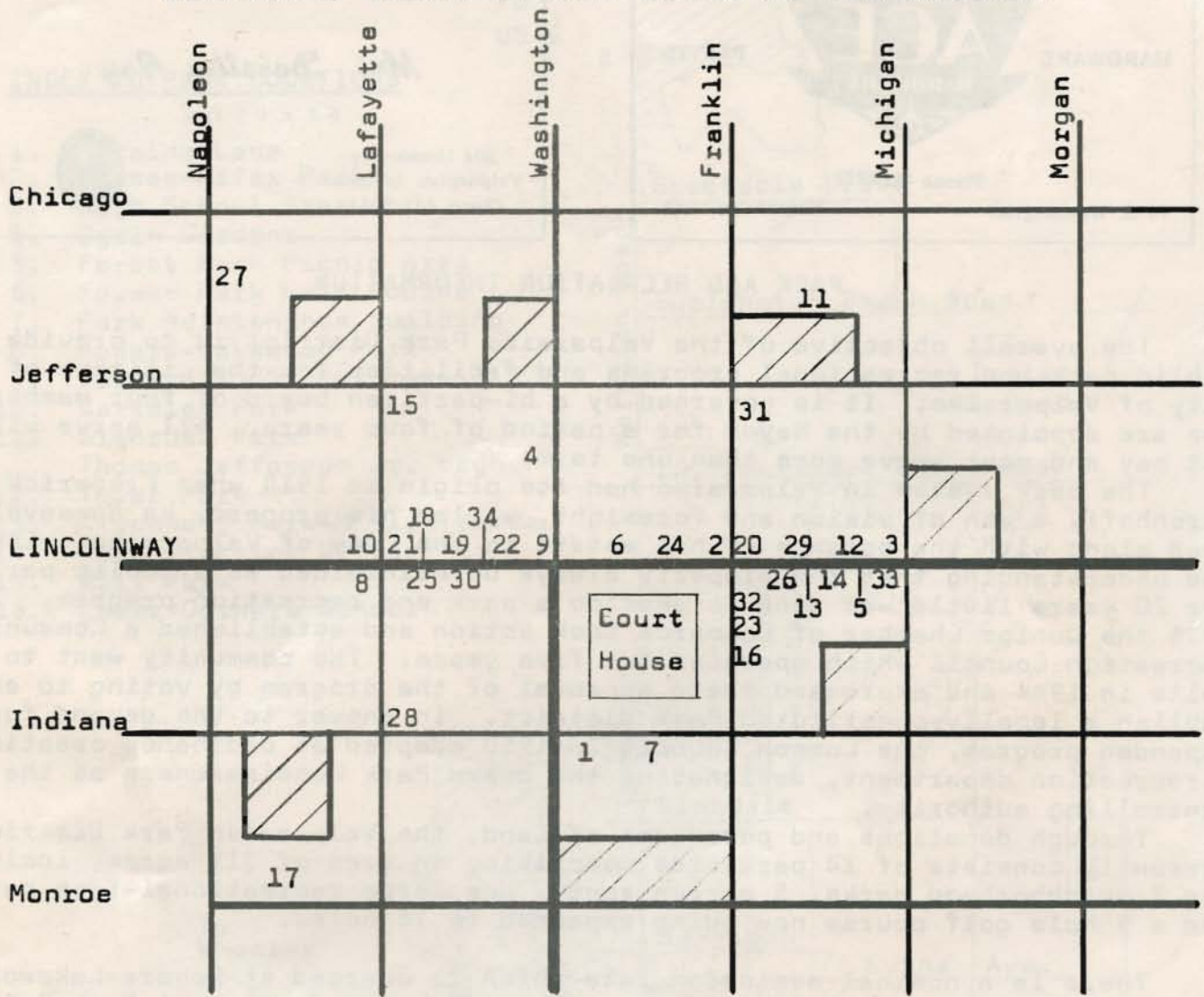
America's manpower begins with **BOYPOWER**  
Support the Boy Scouts

*This message presented as a public service by*



2004 NORTH CALUMET AVENUE • 1509 LA PORTE AVENUE  
VALPARAISO

LOCATION OF DOWNTOWN STORES LISTED IN THIS DIRECTORY



Parking Lots

- |                                    |                                 |
|------------------------------------|---------------------------------|
| 1. Allanson Insurance              | 18. Neeley's Men's Store        |
| 2. Binder's Jewelry                | 19. Nelson Piano and Organ      |
| 3. Casbon Electric                 | 20. Northern Indiana Bank       |
| 4. Claudon and Anderson            | 21. Office Supply, Valparaiso   |
| 5. Edgerton Travel                 | 22. Oxford Shop                 |
| 6. Falvey's Store for Men and Boys | 23. Paramount Shoes             |
| 7. First National Bank             | 24. Penney's                    |
| 8. Gearhart's Interiors            | 25. Premier Theater             |
| 9. Gil Drugs                       | 26. Record Mart                 |
| 10. Harvey's                       | 27. Riggs Real Estate           |
| 11. Indiana Home Improvement       | 28. Sears                       |
| 12. Jo Ann's                       | 29. Sievers Drugs               |
| 13. Jones Jewelry                  | 30. Two Cousins Salon of Beauty |
| 14. Lafemme Coiffeurs              | 31. Valpo Bike and Lock Shop    |
| 15. Lembke Motor Inn               | 32. Valpo Camera Shop           |
| 16. Lowenstines' Department Store  | 33. Western Auto                |
| 17. Miller Glass                   | 34. Young Fashions              |

**HARDWARE**  **PAINTS**

Phone 462-4972

74 S. Washington Valparaiso, Ind.

*Mrs. Dorothy Fry*

REALTOR

304 Lincolnway  
Valparaiso, Indiana  
Phone 462-5061



### PARK AND RECREATION INFORMATION

The overall objective of the Valparaiso Park District is to provide public park and recreational programs and facilities for the citizens of the City of Valparaiso. It is governed by a bi-partisan board of four members who are appointed by the Mayor for a period of four years. All serve without pay and most serve more than one term.

The park system in Valparaiso had its origin in 1918 when Frederick Kirchhoff, a man of vision and foresight, willed his property on Roosevelt Road along with the balance of his estate to the City of Valparaiso, with the understanding that the property always be maintained as a public park. For 20 years little was done to develop a park and recreation program. In 1938 the Junior Chamber of Commerce took action and established a Community Recreation Council which operated for five years. The community went to the polls in 1944 and expressed their approval of the program by voting to establish a legally-constituted Park District. In answer to the demand for an expanded program, the Common Council in 1950 adopted an ordinance creating a recreation department, designating the Board Park Commissioners as the controlling authority.

Through donations and purchases of land, the Valparaiso Park District presently consists of 14 parksites comprising an area of 311 acres, including 7 neighborhood parks, 5 garden spots, one large recreational-type park, and a 9 hole golf course now being expanded to 18 holes.

There is a nominal admission rate which is charged at Rogers-Lakewood Park and the Forest Park Golf Course. Reduced rates for Forest Park Golf Course and Rogers-Lakewood Park are offered to any person who resides within the corporate city limits of Valparaiso or is a non-resident taxpayer. Students at Valparaiso University and Valparaiso Technical Institute are also eligible for reduced rates. Application for identification must be made at the Park District office. Vehicle license number must be given to secure vehicle stickers. Non-resident taxpayers must show tax receipt upon application. There is a processing fee of \$1.00 for both identifications which are renewable each year.

Parks and shelters may be reserved. These reservations are made at the Park Office, 53 1/2 Franklin Street. Advance reservations may be made for anytime during the current year after 8:30 a.m. the first working day of the new year. Reservations are made per picnic table and per shelter. There is

 **CALL THE EXPERTS**  
*To Cover  
Your Floors!*

**TUDOR FASHION FLOORS**  
1603 Roosevelt — 462-8026

**VALPARAISO  
OFFICE SUPPLY**

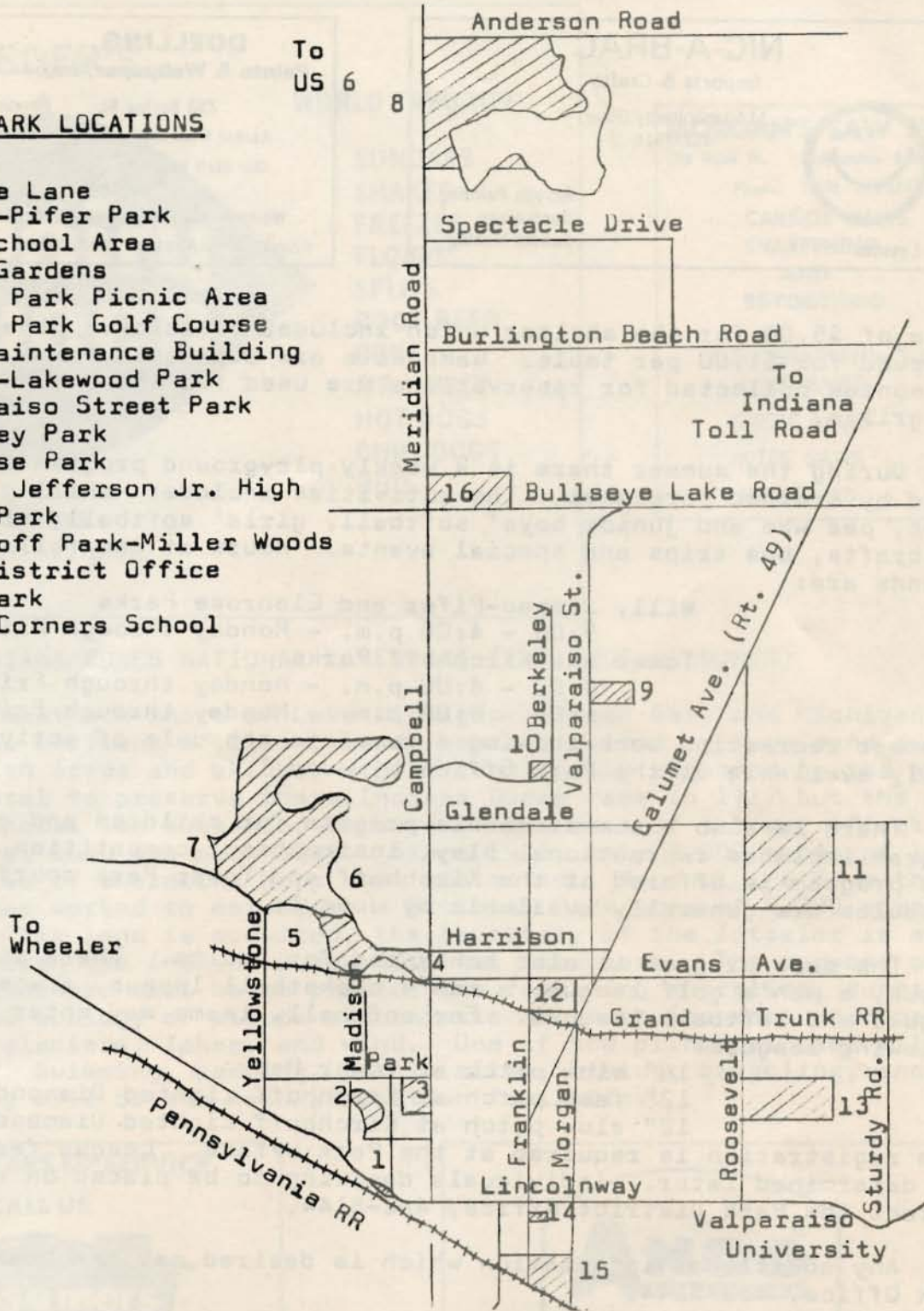
OFFICE FURNITURE  
MACHINES  
SUPPLIES  
HALLMARK CARDS

72-74 Lincolnway  
462-5184  
Valparaiso

To  
US 6

INDEX TO PARK LOCATIONS

- 1. Moraine Lane
- 2. Jesse-Pifer Park
- 3. High School Area
- 4. Ogden Gardens
- 5. Forest Park Picnic Area
- 6. Forest Park Golf Course
- 7. Park Maintenance Building
- 8. Rogers-Lakewood Park
- 9. Valparaiso Street Park
- 10. Berkeley Park
- 11. Glenrose Park
- 12. Thomas Jefferson Jr. High
- 13. Tower Park
- 14. Kirchhoff Park-Miller Woods
- 15. Park District Office
- 16. Will Park
- 17. Cooks Corners School



# Two Cousins Salon of Beauty

Kathy Barker--Manager


Phone 464-2733

**Wigs, Wig Services and Hair Styling  
Modern Hair Cut**

69 Lincolnway Valparaiso  
Open Tuesday, Thursday, and Saturday 9 to 5  
Monday and Wednesday 9 to 9

Next to Premier Theatre

**NIC-A-BRAC**  
Imports & Crafts  
114 Lincolnway (Rear)  
462-2516



**Lessons**

Acrylic Painting  
Decoupage  
Candle Making

**DOELLING**  
Paints & Wallpaper, Inc.

Distributors  
of Masury  
Paint

753 Spring St. Phone 462-3043  
Across from Hannon's Garden Center, Valparaiso  
Our Staff Represents Over 100 Years of Painting  
Experience to Serve You

We have this area's largest selection of wallcoverings  
PAINT - CARPET - WALLPAPER - PICTURE FRAMES

a fee of \$5.00 for the shelter which includes 3 tables. Other tables are reserved for \$1.00 per table. Game kits are available for a fee of \$1.00. All monies collected for reservations are used for the purchase of tables and grills.

During the summer there is a weekly playground program which is supervised by trained personnel. The activities include: skill games, group games, pee wee and junior boys' softball, girls' softball, story hours, arts and crafts, bus trips and special events. Hours at the following playgrounds are:

Will, Jessee-Pifer and Glenrose Parks  
9:00 - 4:00 p.m. - Monday through Friday  
Tower and Kirchhoff Parks  
9:00 - 4:00 p.m. - Monday through Friday  
6:00 - 8:00 p.m. - Monday through Friday

A summer recreation book showing a complete schedule of activities is generally available at the Park Office by June 1.

There is also a summer tennis program for children and adults. The program includes recreational play, instruction, competition and clinics. This program is offered at the Kirchhoff and Tower Park courts. Complete schedules are generally available by June 1.

The park program is also scheduled for adults. There is a women's golf league, a men's golf league, a men's basketball league, a women's volleyball league, and softball leagues. For softball, teams may enter one of the following leagues:

16" slow pitch at Tower Park  
12" fast pitch at Kirchhoff Lighted Diamond  
12" slow pitch at Kirchhoff Lighted Diamond

Team registration is required at the Park Office. League fees and schedules are determined later. Individuals desiring to be placed on a team should contact the Park District Office, 462-5144.

Any additional information which is desired may be obtained at the Park Office, 462-5144.

Specializing in

**FLASH**  
Pest Control

TERMITES ROACHES

ROACHES - FLEAS - ANTS - MOTHS - TERMITES  
SILVER FISH - RATS - MICE - CARPET BEETLES  
INSURED ALL TYPES OF EXTERMINATING  
FREE ESTIMATES

OWNER DONALD E. FOREMAN VALPO, IND. 462-2983

**SEW & SEW**  
FASHION FABRICS

Complete Line of Patterns & Notions

905 Calumet  
Phone 464-2422



**SCHROEDER'S**



East of Millers  
Open 11 a.m. - 11 p.m.

**WORLD FAVORITE:**

SUNDAES  
SHAKES  
FREEZES  
FLOATS  
SPLITS  
ROOT BEER  
COKE  
MR. MISTY  
HOT DOGS  
CHILI DOGS  
BBQ

**MORGAN'S SAW SHOP**

102 Bush St. Valparaiso, Ind. 46383

Phone: (219) 462-0167

**CARBIDE SAWS  
SHARPENING  
AND  
RE-TOOTHING**

ALSO SHARPENING OF:  
HAND SAWS  
CIRCLE SAWS  
MITER SAWS  
HOLE SAWS

**INDIANA DUNES NATIONAL LAKESHORE (THE INDIANA DUNES)**

Along the southern shore of Lake Michigan between Gary and Michigan City are several sections of clean, sandy beaches backed by huge sand dunes, some covered with trees and shrubs, others continually reshaped by the wind. The first proposal to preserve these Indiana Dunes came in 1917 but the national park proposal was suspended because of the cost of the war effort. In 1923 the first land was purchased. Since 1926, only 2,000 acres of land along three miles of shoreline have been protected. Recently, a Save-the-Dunes Council has worked to establish a National Park area of 8,000 acres. When enough of this land is acquired, the Secretary of the Interior is authorized to establish the Indiana Dunes National Lakeshore. The purpose of the national lakeshore will be to protect the remaining shoreline, dunes, marshes, and the ecology of plants and animals in an environment produced by the actions of glaciers, lakes, and wind. One of the principal uses will be for recreation. Swimming, camping, picnic sites, hiking, bicycling, and horseback riding will be the main recreation facilities.

**OVER 80 YEARS OF SERVICE**

**CALL US**



**Flat Roofing  
Shingle Roofing  
Repairs**

VALPARAISO  
**462-2808**

PORTAGE  
**762-2450**



*The Windshield Wiper Specialists*

**THE ANDERSON COMPANY**  
Gary, Indiana 46440 · U.S.A.

# Frames'

55 S. Franklin  
Veiparaiso  
462-8923

PARAMOUNT SHOES ▼

Family Shoes and Women's Clothing

## a nice Story

One time there were a fairly ugly girl who were Saderly because of this. NO one ever had a decent word for her and she passed her time dreaming about making kisses with Cary Grunt, Rock Hasbeen and Jack Lemming. She were not even a good dreamer and so this whole bit made her even more Saderly. To lift her sunk spirits, she went and had her hair permanented. But when she reflected herself in the mirror she could easily see that she were just a fairly ugly girl with very curly hair. As a last resort, she bought a real keen dress from Frames' No sooner did she put it on, when a big cigar with a man behind it stepped up.... "Lucky you," say the man behind the huge cigar, "I are a big-time talent scout for the famous motion picture maggot, Run A. Demille. That real keen dress look to be just what he need to star in his next Epic.... You must come to Hollywood for a screen test."

She went.....and they tested her screen.

The dress were a sensation and was signed to an impressive long-term contract with lotsa options. They gave the fairly ugly girl with very curly hair a plane ticket home and a big sack with a bunch of money in it. Thereafter she were happy as a lollipop. Several people had decent words for her and whenever she went to the movies she could see Cary Grunt, Rock Hasbeen and Jack Lemming make love to her dress (in color and wide screen yet). She were the envy of most anybody.

I are the richest, happiest fairly ugly girl with very curly hair in the whole town." Say she proudly "and I owe it all to Frames' PARAMOUNT SHOES ▼  
....and she did. You know.



# Strongbow



**TURKEY FARM & INN**  
 On Highway 30 — ¼ Mile East of 49  
 Valparaiso, Indiana



All Turkeys served here are from our own flocks. The Home of Strongbow Turkey Pies and the famous Strongbow Smoked Turkey. We take pride in serving the best Turkey Dinners, Steaks and Sandwiches. Over 750 Roses of many beautiful and colorful varieties.

MEMBER OF AMERICAN ROSE SOCIETY  
 Telephone — 462-3311



**219-462-3311**



# Shuggies

**We have rooms available for all occasions.**

Individually tailored and supervised weddings, banquets and parties are our speciality. Contact us for your next function.



ATTORNEYS

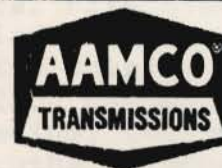
Bahlmann & Walker David W. Bahlmann	51 Franklin	Robert J. Walker	464-2216
Blachly, Tabor & Bozik Quentin A. Blachly Glenn J. Tabor Patricia Tabor	Suite 401 First Federal Bldg.	James S. Bozik Duane W. Hartman	464-1041
Chester, Clifford, Hoepfner & Houran James W. Chester Charles T. Clifford Delmar R. Hoepfner Winfield L. Houran William H. Wagner Larry G. Evans William E. Hiller	Northern Indiana Bank Bldg.	Phillip L. Brockington James L. Sullivan Wm. P. Satterlee III Alan S. Morrison John R. Highland Gordon A. Etzler	462-5147
Leo Clifford	14 Indiana		462-5844
Conover, Claudon & Billings Wm. G. Conover Robert K. Claudon	114 Lincolnway	Bruce E. Billings	462-0505
Douglas, Douglas & Douglas Bruce W. Douglas George W. Douglas	First National Bank Bldg.	Herbert K. Douglas James A. Douglas	462-2126
Dennis R. Hoover	5 Lincolnway		462-1725
Lyons, Aungst, Guastella & Allen John M. Lyons Ronald Aungst	19 Lincolnway	Joseph S. Guastella Jack R. Allen	462-2118
Ronald P. Nelson	302 Indiana		464-2373
Roland P. Sievers	13 Lincolnway		462-6821
Spangler, Jennings, Spangler & Dougherty Spangler Harry J. Jennings Spangler	56 Washington	Patrick J. Dougherty Duane V. Stoner	462-6151
Eng. Zimmerman	56 Washington		462-6500

# The Pappas Company

307 LINCOLNWAY  
VALPARAISO, INDIANA  
Phone: 462-5171

203 BROADWAY  
CHESTERTON, INDIANA  
Phone: 962-2315

**FINE FLOWERS AND GIFTS**



*World's Largest Transmission Specialists*

**FREE TOWING**

**904 EVANS ROAD  
(219) 462-1118 VALPARAISO, INDIANA 46383**

# Sears

**IN VALPARAISO**

**63 Lafayette  
Phone 464-1053**

## BIG WHEEL RESTAURANT

Family Restaurant

Open Daily 7 a.m.—12 midnight  
Fri. and Sat. to 1 a.m.

**902 LINCOLNWAY**

**CARRY-OUT SERVICE**

**Phone 462-4169**

ORGANIZATIONS

- Educational - American Association of University Women  
Delta Kappa Gamma  
League of Women Voters of Porter County  
Porter County Organic Gardeners  
Toastmasters Club #255  
Midwest Toastmistress Club
- Fraternel - Beta Sigma Phi - City Council  
Delta Sigma Pi  
Delta Theta Tau - Tau Chapter  
Gamma Nu Sorority - Nu Chapter  
Fraternel Order of Police  
Kappa Kappa Kappa - Iota Chapter  
P.E.O. - Chapter 80  
Psi Iota Xi  
Sigma Alpha Chi - Eta Chapter  
Hadassah  
University Guild  
Faculty Women's Club
- Lodges - Eagles Aerie #2517  
Eagles Aerie #2517 Auxiliary  
Elks Lodge #500  
Vivians  
I.O.O.F.  
Charity Rebekah Lodge #46  
Past Nobel Grands  
Knights of Columbus  
Moose Lodge #1357  
Women of the Moose - Chapter #437  
Royal Neighbors of America  
Masonic Lodge
- Patriotic - American Legion - Chas. Pratt Post #94  
Post at Eight  
Post at Forty - P.O. Salon #605  
Navy Mothers Club of America #650  
Veterans of Foreign Wars  
Father's Auxiliary  
Daughters of American Revolution  
World War I Veterans Barracks #2106  
Historical Society of Porter County
- Service - Indiana Federation of Clubs  
Junior Chamber of Commerce  
Jaycees  
Kiwanis Club  
Lions Club  
Lady Lions  
Rotary Club  
Valparaiso Womens Club  
Valparaiso Junior Womens Club  
Welcome Wagon Newcomers Club  
39'ers Club  
Alumni Club



INSURANCE  
REAL ESTATE



**SHURR INSURANCE AGENCY**

833 East Lincolnway  
Valparaiso, Indiana 46383

**EWEN REALTY**

Bus. 462-1146

David Ewen  
Evan Landgrebe  
Emerson Shurr

Res. 462-0839  
Res. 996-3372  
Res. 462-6986

**CHURCHES**

Immanuel Lutheran Church  
Trinity Lutheran Church  
Calvary Baptist Church  
First Christian Church  
First Baptist Church  
Assembly of God Church  
Weselyan Church  
Temple Israel  
Chapel of the Resurrection  
Seven Dolars Shrine  
Church of the Nazarene  
Apostalic Christian  
Valparaiso Church of Christ

Seventh Day Adventist  
Apostalic Faith  
Valparaiso Mennonite  
Flint Lake Church of Christ  
Evangelical Free Church  
First Church of Christ Scientist  
Porter County Ministerial Assoc.  
Porter County Youth for Christ  
Church Women United of Valparaiso  
First United Methodist Church  
St. Andrew's Episcopal Church  
St. Paul's Catholic Church  
First Presbyterian Church

SUZUKI

SUZUKI

SUZUKI

SUZUKI

SUZUKI

SUZUKI

**BUCKS CYCLE and SPORT**

802 EVANS  
(across from fairgrounds)  
VALPARAISO 462-6911

**SUZUKI MOTORCYCLES**  
Mini Trails

**COMPETITION CYCLES**  
Suzuki  
Husquvarna  
Penton  
Ossa

**SNOWMOBILES**  
Suzuki  
Coleman Skiroute



**Built to take  
on the country.**

**EXPERT MECHANICS — WE SERVICE WHAT WE SELL**

SUZUKI

SUZUKI

SUZUKI

SUZUKI

SUZUKI

SUZUKI

SUZUKI

SUZUKI

SUZUKI

SUZUKI

# Lowenstines

Downtown Valparaiso



## Your Shopping Center For . . .

- Women's Wear
- Men's Wear
- Children's Wear
- Home Furnishings
- Housewares
- Phone 462-3115
- Free parking at rear of store.

**STORE HOURS:**  
 Mon. & Fri.  
 10 a.m. - 9 p.m.  
 Tues., Wed., Thurs., Sat.  
 10 a.m. - 5:30 p.m.  
 Closed Sundays  
 and Holidays

## POLLING PLACES 21

- Precinct 1 - Banta School, 605 Beech
- Precinct 2 - Lutheran Parish Hall
- Precinct 3 - Court House
- Precinct 4 - Altruria Hall, 508 Brown
- Precinct 5 - Parkview School, E. Wood
- Precinct 6 - Northview School,  
257 Northview Dr.
- Precinct 7 - Memorial School, Park Av.
- Precinct 8 - High School, 405 Campbell
- Precinct 9 - Tower Park, 107 Billings
- Precinct 10- Jefferson Jr. High School  
N. Roosevelt
- Precinct 11- Central Fire Station,  
Indiana St.
- Precinct 12- Baptist Church,  
2205 Campbell
- Precinct 13- Gymnasium, Immanuel  
Lutheran School
- Precinct 14- Cooks Corners School

## INDIANA DRIVER'S LICENSE BUREAU HOURS

3 Napoleon 462-4814

Monday, Tuesday, Wednesday, Friday  
 8:30 am - 4:30 pm

Thursday and Saturday  
 8:30 am - 12:00 pm

## TRY A SANDWICH FROM

### Mother's Pantry

Open Til 12:30 a.m.

PIZZA	Full — \$2.25
	½ — \$1.25
GIANT ITALIAN BEEF	.85
SUPER HAM	.85
CORN BEEF	.85

PICK UP ALL YOUR PARTY NEEDS

From

### Ted's Party Store

Open 4:00 p.m. til Closing

## LIVE BANDS

6 NIGHTS A WEEK

Pabst - Andeker

Schlitz Malt Liquor on Tap

Tuesday Night — No Admission  
 Charge With Student ID

Happy Hour Daily 4 - 6 -



DON'T FORGET MOTHER'S PANTRY  
 ITALIAN BEEF - KOSHER CORN BEEF - HAM - 85¢

- All Drinks ½ Price

# Miller's Mart

*"Your Quality Department Store"*  
462-3148

# Miller's Market

*"For the Best Buys in Foods"*  
462-2711

# Miller's of Valpo

*Quality Furniture at Lowest Prices*

1805 E. Lincolnway

Valparaiso

## Gearhart's

**DRAPERIES - CARPET - UPHOLSTERING**

151 Lincolnway, Valparaiso, Indiana 46383

Phones 464-3219 and 926-3104

*Shop At Home Service  
or See Our Showroom  
Free Estimates*

*Paul R. Gearhart, Jr.  
Owner  
Ann Rinchak  
Decorator Consultant*

## THE PORT OF INDIANA

The Port of Indiana--world's newest and most modern facility for shipping and receiving cargo--is a 150 year old dream come true. Even before 1816 (when Indiana became a state) the territorial government wanted a port on the Indiana shore of Lake Michigan, and later Congress recognized this desire by establishing the new state's boundary along a line ten miles north of the lake's southern extremity.

## CHAMBER OF COMMERCE

The Valparaiso Chamber of Commerce acts as the information center and maintains directory and map service for the residents of the City. The Chamber also administers the policy on solicitations to protect the public as well as its members. If you are bothered by a solicitor, check with the Chamber as to his validity.

SELECTIVE SERVICE SYSTEM  
53 Michigan Ave.  
462-3720

## SMITH-NUPPNAU COMPANY

**Builders & Building Materials  
& Ready Mix  
Concrete**



Valparaiso 462-3191

LaPorte 362-2039



# THERE IS ONLY ONE...

Allows You  
To Walk On  
Carpets Faster

Will Outclean  
Any Other  
Method



Only Steamatic  
Has 2  
U. S. Patents

Only Steamatic  
Can Produce  
Heat at Point  
Of Impact

STEAMATIC WILL OUTCLEAN ANY  
OTHER CARPET CLEANER ON THE  
MARKET

CALL



TODAY

464-3568

For Everything Photographic — Optical Goods  
Recorders  
SEE US!

**Valparaiso Camera Shop**

Serving Porter County Since 1948

RADIO, NEWSPAPERS, AND TV STATIONS

Valparaiso is served by The Vi-  
dette Messenger in Valparaiso with a  
circulation of over 11,420 including  
daily delivery. The Gary Post Trib-  
une as well as Chicago area papers  
are also available.

Local radio stations are:

WAKE- 1500

WLJE-FM- 105.5

WNWI- 1080

For the TV viewer there are five  
VHF Chicago stations received in the  
Valpo area and 4 UHF Chicago channels  
plus several South Bend UHF stations.

## POSTAL SERVICE

Phone 462-2189

Post Office hours at 166 Lincolnway

Lobby - 2:30 am - 7:30 pm Mon-Sat.

6:00 am - 5:30 pm Sunday

Windows - 8 am-5 pm Mon-Fri.

8 am-12 pm Sat.

### Pick-up in Lobby

### Dispatch

Daily

Daily

4:55 am

6:05 am

3:15 pm

3:55 pm

6:30 pm

6:50 pm

Saturday

4:55 am

6:05 am

6:30 pm

6:50 pm

Sunday and Holidays

12:40 pm

1:05 pm

# HAYES MOTORS

*Home of Better Cars*

402 E. Lincolnway

462-4491

Wallie Musson

Earl Bub Hayes

Ron Hayes

A COMPLETE **GLASS** SERVICE

STORE FRONTS & PLATE GLASS REPLACEMENT

AUTO - WINDOW - PATTERNED  
MIRRORS - FURNITURE TOPS  
STORM DOORS &  
WINDOWS CUSTOM-MADE  
SHOWER DOORS  
& TUB ENCLOSURES

"Specialists In Storm  
Window & Screen Repair"

**462-1753**

FOR EMERGENCIES CALL 464-1470  
462-9724

**MILLER GLASS  
SERVICE**

"SERVING VALPO OVER 40 YEARS"

154 MONROE - VALPO.



**DEBONAIRE**

HOME OF IMPECCABLE DALMATIANS

Show



Pets

CHAMPION BLOODLINES

DAVE & MARILYN RAYMOND  
PHONE 219 462-2704

2306 CLOVER LANE  
VALPARAISO, IND. 46383

PORTER MEMORIAL HOSPITAL  
462-1121 LaPorte Ave.

Porter Memorial Hospital is a modern, well-equipped, 350-bed general hospital. The medical staff has over 60 doctors and there are approximately 675 employees.

ELECTED OFFICIALS

President - Richard M. Nixon  
United States Senators - Vance Hartke  
Birch Bayh  
United States Representatives -  
Earl Landgrebe 2nd District  
Governor - Edgar Whitcomb  
State Senator - Charles Kleinkort  
Joint State Representatives -  
King Telle  
Walter Roorda

**HARVEY'S OF VALPARAISO**

152 W. Lincolnway

*"Harvey's Has Everything"*

3 Floors of Shopping Pleasure  
Complete Selections for the Entire Family

VISIT OUR

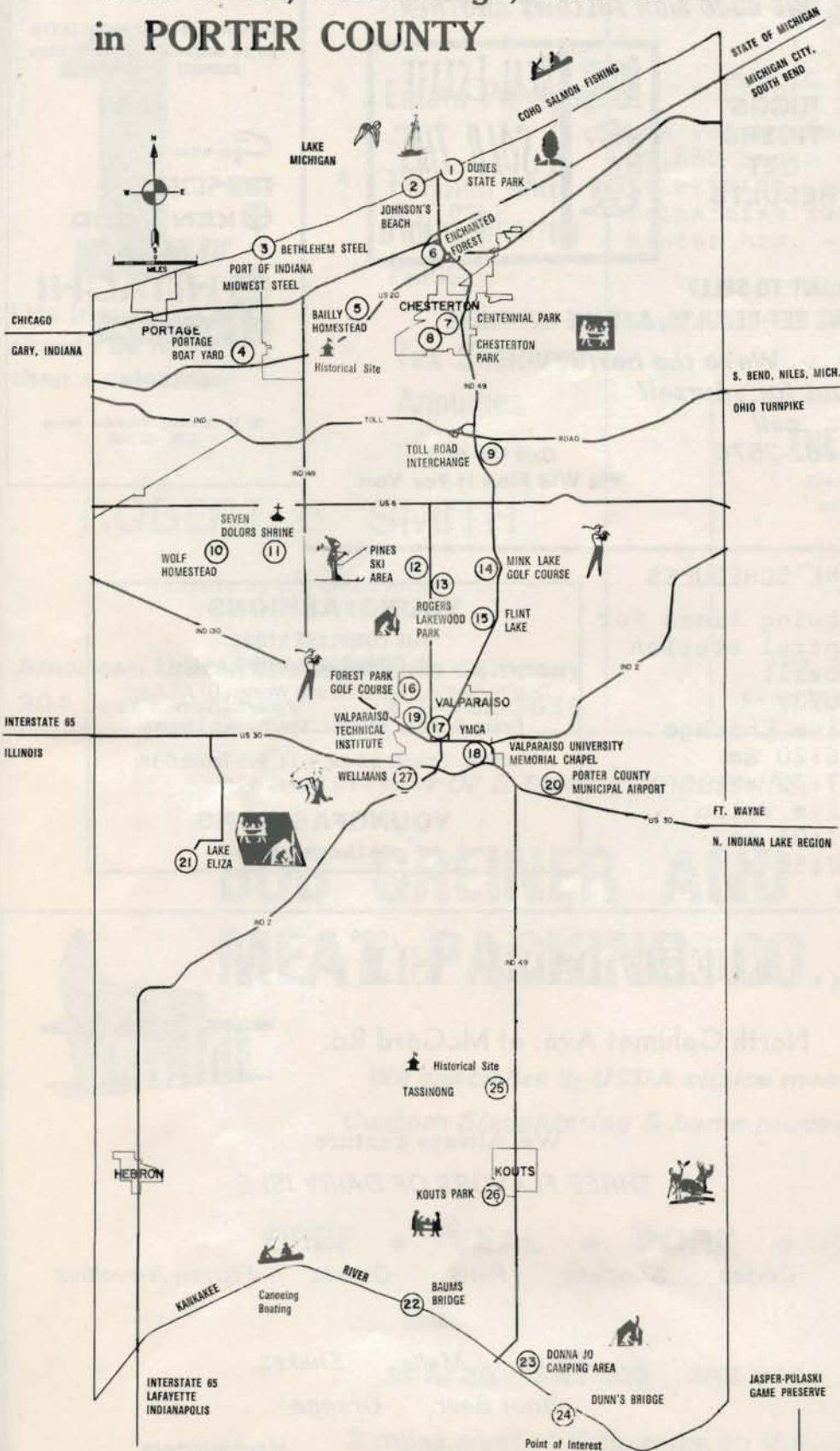
**FIRESIDE LUNCH ROOM**

for a meal or a snack

**HARVEY'S BEAUTY SALON**

Phone 462-9041

# what to see, where to go, what to do in PORTER COUNTY



1. Dunes State Park
2. Johnson's Beach
3. Port of Indiana
4. Portage Boat Yard
5. Baily Homestead
6. Enchanted Forest
7. Centennial Park
8. Chesterton Park
9. Toll Road
10. Wolf Homestead
11. Seven Dolors Shrine
12. Pines Ski Area
13. Rogers-Lakewood Park
14. Mink Lake Golf Course
15. Flint Lake
16. Forest Park Golf Course
17. YMCA
18. Valparaiso University
19. Valparaiso Technical Institute
20. Porter County Municipal Airport
21. Lake Eliza
22. Baum's Bridge
23. Donna Jo Camping and Recreation Area
24. Dunn's Bridge
25. Tassinong
26. Kouts Park
27. Wellmans

RIGGS REAL ESTATE WHERE ONE GOOD SIGN FOLLOWS ANOTHER



RIGGS'  
TIGERS  
GET  
RESULTS



WANT TO SELL?  
NEVER A CHARGE TILL WE GET RESULTS, AND WE GET THEM

Some say . . . We're the best  
Find out for yourself  
call

462-3576

Having Trouble  
Finding a Home?

Call Us And  
We Will Find It For You

JESS BOWMAN & ASSOCIATES  
STEREO COMPONENT SYSTEMS & SOUND  
EQUIPMENT DISTRIBUTOR



253 W. Lincolnway, Valparaiso, Indiana  
(219) 462-7933

### BUS, TRAIN, AND AIRLINE SCHEDULES

Trains leave at the following times for  
Chicago from the Penn-Central station  
near Lincolnway and Campbell.

(Phone - 462-8673)

Leave Valpo	Arrive Chicago
5:55 am	6:20 am
6:35 am	7:45 am
Leave Chicago	Arrive Valpo
5:05 pm	7:05 pm
5:40 pm	7:50 pm

For bus schedules call  
either:

Greyhound Lines  
902 Calumet  
462-0561

Trailways Lines  
24 Washington  
462-8744

#### Phillips Airline Schedule Westbound Porter Co. Airport to O'Hare (Weekdays)

Flight	Depart	Arrive
100	7:10 a.m.	7:40 a.m.
102	9:40 a.m.	10:10 a.m.
104	12:10 p.m.	12:40 p.m.
106	3:40 p.m.	4:10 p.m.
108	6:10 p.m.	6:40 p.m.
110 Sat.	12:10 p.m.	12:40 p.m.
112 Sun.	4:10 p.m.	4:40 p.m.
	6:10 p.m.	6:40 p.m.

#### Eastbound O'Hare to Porter Co. Airport (Weekdays)

Flight	Depart	Arrive
101	9:00 a.m.	9:30 a.m.
103	11:00 a.m.	11:30 a.m.
105	1:30 p.m.	2:00 p.m.
107	5:00 p.m.	5:30 p.m.
109	7:30 p.m.	8:00 p.m.
111 Sat.	1:00 p.m.	1:30 p.m.
113 Sun.	5:00 p.m.	5:30 p.m.
	7:00 p.m.	7:30 p.m.

For other flights call  
219-872-5571 or 462-6508

### YOUNGFASHIONS

THE COMPLETE STORE  
IN DOWNTOWN VALPO

Quality Clothing For Girls and Women Of All Ages

Coats, Dresses, Blouses, Sportswear, Lingerie

Infants, Toddlers, 3-6X; 7-14; Pre-Teens 6-14  
Junior 3-15; Misses 6-14

YOUNGFASHIONS

66 Lincolnway

## KUEHL DAIRY ISLE

North Calumet Ave. at McCord Rd.



We Always Feature

THREE FLAVORS OF DAIRY ISLE

for

Cones Sundaes Pints Quarts Frozen Novelties

also

Sodas Malts Shakes

Root Beer Orange

Hot Dogs Cones Hamburgers

And other hot sandwiches

Ample and Convenient Off-highway Parking

A Number

**1**

**Life Insurance Man  
should be more  
than a salesman**

- \* Life Insurance Planning
- \* Estate Planning
- \* Pension and Profit Sharing Plans
- \* Tax Sheltered Annuities

**ROBERT B. SMITH**

Chartered Life Underwriter

**American United Life Insurance Company  
204 East Lincolnway 219-462-3630**

**SOCIAL SECURITY OFFICE  
700 N. Calumet  
Hours**

8:30 am - 12:30 pm  
1:00 pm - 3:00 pm

**PUBLIC LIBRARY INFORMATION  
107 Jefferson**

The Valparaiso Public Library has 39,858 books along with many films, filmstrips, and records available to Valparaiso residents.

Winter hrs. - 9:30 am- 9:00 pm M-F  
9:30 am- 5:00 pm Sat.  
Closed Sundays  
Summer hrs. - 9:30 am- 8:00 pm M+F  
9:30 am- 6:00 pm T-W-Th  
9:30 am- 5:00 pm Sat.

**THE OXFORD SHOP**

features campus styles  
on the move from -

Van Heusen Burlington Rainfair  
Puritan Jaymar

Johnny Carson Apparel

**The Oxford Shop, Inc.**

62 W. Lincolnway 462-8235

*For a treat in meats its*

**BOB GREINER AND SONS  
MEAT PACKING CO., INC.**

*We specialize in USDA choice meats  
Custom Slaughtering & home processing*

**BEEF • VEAL • PORK • LAMB**

**M.R. 35 Box 206 462-6501**

**2 miles west of Valparaiso on U.S. 30**

*across from Hayes-Leonard School*

INDUSTRY


There are 25 local manufacturing industries and shops, employing nearly 3,000 workers. Principal manufactured products are: bakelite products, food processing machinery, permanent magnets, ball bearings, electric lamp guards, electric switches, automobile parts, aprons, machine tools, refined metals, fiberglass tanks, fruit juice cans, steel rollers, and automatic sprinkler systems.

McGill Manufacturing Co., Inc., the largest local employer, manufactures anti-friction ball and roller bearings, electric lamp guards, switches, and other electrical equipment. McGill's was founded near the turn of the century by the late James H. McGill in Chicago and moved to Valparaiso in 1905. The original name was The Crescent Company. The first products were essentials of the growing electrical industry such as lamp bulb guards, cord spools, drop cord adjusters, socket handles, baby gasoline torches, and coloring fluid for bulbs.

The David E. McDaniel Co., Inc. has been in business approximately forty years designing, fabricating, and installing automatic sprinkler protection systems throughout the Midwest. The company installs in excess of \$3,000,000 worth of fire protection equipment each year. Approximately 125 people are employed.

Urschel Laboratories was founded in 1910 by the late William E. Urschel for the purpose of manufacturing a Gooseberry Snipper which he had invented. This machine removed the stem and blossom ends from gooseberries which at that time were canned in great quantities in this country. William Urschel began the inventing and development of many other types of machinery for the food industry. Urschel machines are used by every major food processor in the United States and in almost all foreign countries. During each day everyone enjoys at least one food product prepared with the assistance of Urschel machines.

462-1078 462-0436



**EVERYTHING IN SEAFOOD**

Cap-n Elijah Jones 714 Calumet  
 Ole English Valparaiso, Indiana  
 Fish & Chips

**ONE STOP SAVINGS**

**ON THE**

**FULL FORD LINE**



1603 E. LINCOLNWAY  
VALPARAISO

**WIGGINS**  
REALTOR

OUR PROFESSIONAL SALES STAFF  
SPECIALIZES IN

- RESIDENTIAL
- COMMERCIAL
- INDUSTRIAL
- FARMS
- REAL ESTATE APPRAISING

**BUY  
SELL  
RENT**



For DEPENDABLE, COURTEOUS SERVICE

Call  
**462-3195**

500 EAST LINCOLNWAY  
VALPARAISO, INDIANA 46383



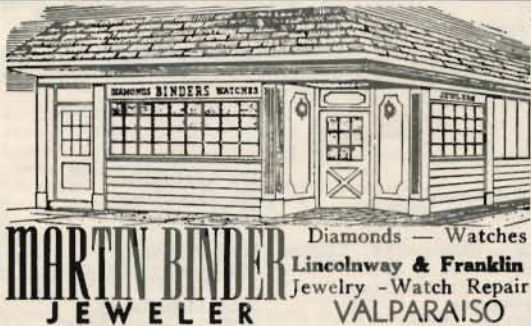
# PENNEYS

ALWAYS  
FIRST  
QUALITY

17-19 Lincolnway

- MENS & BOYS CLOTHING
- WOMENS & GIRLS CLOTHING
- DOMESTICS & PIECE GOODS
- SHOES FOR THE FAMILY

Catalog Sales Call 464-1071



#### INDUSTRY (con't.)

The Anderson Company was started by John W. Anderson on March 1, 1918 in South Bend with only \$10,000 capital. In the beginning ANCO designed, developed and patented its products and then contracted with other companies to make those products from tools and dies that ANCO owned. In March, 1968, ANCO completed its first fifty years of service. The wiper equipment used on aircraft and that used on original equipment for cars all comes from ANCO. The ANCO plant building in Valpo had a very interesting beginning. Built in 1866, the original building was used for a Woolen Mill, Pin Factory, second Woolen Mill, Wagon and Carriage Company, Soap Company, Mica Company, Fibroc Insulation Company, Continental Diamond Fibre Company, and the Budd Company. In June, 1961, the building was purchased and leased to the present company The Anderson Company.

The Coca-Cola Company Foods Division, located on East Highway 30, began operations in 1968. There are approximately 50 employees at the plant, which makes 46-ounce cans for the Company's Hi-C Drinks. In cooperation with Valparaiso University, the plant operates a collection and processing center for used cans and bottles which are turned over to a salvage industry for recycling.

Chester, Inc., located on East Highway 30, is a leading producer of hybrid seeds. The company also produces agricultural chemicals, material handling equipment, and farm structures. Chester, Inc. is also known for its gourmet pop corn.

Indiana General is the world's largest manufacturer of magnetic materials. The company began in 1908 as Indiana Steel Products and by 1959 it grew to six divisions.

#### DONATIONS

Walsh Construction Co.  
Urschel Laboratories  
McGill Manufacturing Co.  
The Hudson Company  
Good Realty

The David E. McDaniel Co.  
The Anderson Company  
Coca-Cola Foods Division  
Chester, Inc.  
Miracle Water



"WE SELL FUN"

For over 35 years Nelsons have served Northern Indiana's piano and organ needs - now with music centers in Hammond, Gary, Michigan City and Valparaiso. We have been a part of the Valparaiso community for over 14 years. Nelsons are proud to represent in this region the HAMMOND, BALDWIN and KIMBALL piano and organ lines. Select from our \$400,000 inventory of new and used pianos and organs in practically every style and finish, with a price to fit almost every budget. Nelsons is also your headquarters for FISHER Console Stereo HiFi's.

68 Lincolnway Valparaiso Phone 462-5021

Also

Gary — Hammond — Michigan City

it's  
the real  
thing



Coca-Cola Bottling Company

205 Rumely Street/La Porte, Indiana 46350

Tele 362-6294

AAMCO Automatic Transmissions	902 Evans	462-1118
Allanson Insurance, Inc.	4 Indiana	462-5106
Arman's	1414 E. Lincolnway	462-9304
Bike Cycle Sales	State Road 130 W.	462-7472
Castle Ford Sales, Inc.	1603 E. Lincolnway	462-2102
Castle Realtor	817 Lincolnway	462-5741
City Wheel	902 Lincolnway	462-4169
Birder's Jewelry	23 Lincolnway	462-5931
Powman, Jess, & Assoc.	253 Lincolnway	462-7933
Brown Tire Company	State Road 49 S.	462-3109
Buck's Cycle	802 Evans	462-6911
Casbon Electric	123 Lincolnway	462-4194
Claudon & Anderson Ins.	8 Washington	462-5178
Coca-Cola Bottling Co.	205 Rumely, LaPorte	362-6294
Consumers Roofing Co.	4 Weston	462-2808
Cubby, The	1608 Lincolnway	462-4125
Dairy Isle	N. Calumet at McCord Road	
Dairy Queen	2001 LaPorte Road	462-9643
Debonaire Dalmatians	2306 Clover Lane	462-2704
Doelling Paint & Wallpaper, Inc.	753 Spring	462-3043
Drake, Dennis, Ins.	552 W. Lincolnway	462-0527
Edgerton's Travel Service	122 E. Lincolnway	462-3672
Falvey's Store for Men & Boys	7 Lincolnway	462-8317
First National Bank	14 Indiana	462-4161
Fishery, The	714 Calumet	462-1078
Flash Pest Control	1305 Calumet	462-2983
Frames' Paramount Shoes	55 S. Franklin	462-8923
Fry Real Estate	304 Lincolnway	462-5061
Gearhart's Interiors	151 Lincolnway	462-3219
Gil Drugs	52 Lincolnway	462-4145
Gregory, Gil, Real Estate	819 Lincolnway	462-2692
Bob Greiner & Sons Packing, Inc.	U.S. Hwy 30	462-6501
Hannon's Frostop Drive In	State Road 2	462-5336
Hannon's Garden Center	Junction State Road 2 and Hwy 30	462-3558
Harley Snyder Co.	407 Lincolnway	462-3531
Harvey's	152 Lincolnway	462-6155
Hayes Motor Sales	402 E. Lincolnway	462-4491
Hertz Rent A Car	902 Calumet	462-3283
Hook's Drugstore	2004 N. Calumet	462-2141
Indiana Home Improvement	106 Franklin	462-5676
Jack's Standard Service	1501 Calumet	462-9242
Jo Ann's	115 Lincolnway	462-2773
Jones Jewelry	110 Lincolnway	462-7206
LaFemme Coiffeurs	114 Lincolnway	462-2744
Landgrebe Motor Transport, Inc.	State Road 130	462-4181
Landgrebe & Son, Inc.	State Road 130	462-0551
Lembke Motor Inn	15 Lafayette	462-1141
Lowenstine's Department Store	57 Franklin	462-3115
Manor Motel	U.S. Hwy 30	462-7401
Miller Glass	154 Monroe	462-1753
	Emergency glass svc.	462-9724
Miller's Department Store and Market	1805 Lincolnway	462-3148
Morgan Saw Sharpening	102 Bush	462-0167
Neeley's Men's Shop	70 Lincolnway	462-8031
Nelson Piano & Organ Co.	68 Lincolnway	462-5021
Nic-A-Brac	114 E. Lincolnway	462-2516
Northern Indiana Bank	101 Lincolnway	462-2151
North Side Daisy Car Wash	1607 N. Calumet	462-0616
Oxford Shop, The	62 W. Lincolnway	462-8235
Palmer's Hotel for Children	R. R. #2, Smoke Road, Box 37	462-2984
Pappas Co., The	307 Lincolnway	462-5171
Penney's Department Store	19 Lincolnway	462-1173
Pines, The	119 Lincolnway	462-2671
Porter County Co-op	Roosevelt Road	462-2143
Premier Theatre & 49'er Drive In	69 Lincolnway	462-3012
Professional Bldg. Maintenance Company	902 Calumet	462-3177
Record Mart, Inc., The	108 E. Lincolnway	462-7700
Riggs Real Estate	103 Napoleon	462-3576
Sears Roebuck & Company	63 S. Lafayette	462-1051
Sew-N-Sew	905 Calumet	462-2422
Shurr Insurance & Ewen Realty	833 E. Lincolnway	462-1146
Sievers Drug Company	109 Lincolnway	462-4381
Smith CLU Insurance	204 E. Lincolnway	462-3630
Smith Nupnau Ready Mix	360 Indiana	462-3191
Steamatic of Northern Indiana	706 Cedar Court	462-3568
Stone Balloon, The	1409 E. Lincolnway	462-9363
Strongbow Turkey Inn	U.S. Hwy 30 East	462-3311
Town & Country Homes	102 Morgan	462-6121
Trowbridge Insurance Agency	1607 Calumet	462-1021
Tudor Fashion Floors	1603 Roosevelt Road	462-8026
Two Cousins Salon of Beauty	69 Lincolnway	462-2733
University Drugs	1608 Lincolnway	462-4125
Valparaiso Camera Shop	63 Franklin	462-3445
Valparaiso Office Supply, Inc.	74 Lincolnway	462-5184
Valpo Bike and Lock Shop	20 Franklin	462-6011
Valpo Liquor Store	1401 E. Lincolnway	462-8819
Washburn Realtors	U.S. Hwy 30	462-5218
Wellman's Holiday Inn	151 W. Lincolnway	462-6141
Werner TV Service	560 Bond	462-2763
Western Auto	122 E. Lincolnway	462-1430
Wiggins Realtor	500 E. Lincolnway	462-3195
Wingfashions	66 Lincolnway	462-9643

ANNUITIES, PENSION & PROFIT SHARING PLANS		
Smith CLU Insurance	204 E. Lincolnway	462-3630
APPLIANCES		
Casbon Electric	123 Lincolnway	462-4194
Lowenstine's Department Store	57 Franklin	462-3115
Miller's Department Store and Market	1805 Lincolnway	462-3148
Porter County Co-op	Roosevelt Road	462-2143
Sears Roebuck & Company	63 S. Lafayette	462-1051
Western Auto	122 E. Lincolnway	462-1430
ART SUPPLIES		
Doelling Paint & Wallpaper, Inc.	753 Spring	462-3043
Nic-A-Brac	114 E. Lincolnway	462-2516
Valparaiso Office Supply, Inc.	74 Lincolnway	462-5184
AUTOMOBILE REPAIRS		
AAMCO Automatic Transmissions	902 Evans	462-1118
Barile Ford Sales, Inc.	1603 E. Lincolnway	462-2102
Brown Tire Company	State Road 49 S.	462-3109
Jack's Standard Service	1501 Calumet	462-9242
Porter County Co-op	Roosevelt Road	462-2143
Sears Roebuck & Company	63 S. Lafayette	462-1051
AUTOMOBILE TAPES AND CASSETTES		
Casbon Electric	123 Lincolnway	462-4194
Miller's Department Store and Market	1805 Lincolnway	462-3148
Record Mart, Inc., The	108 E. Lincolnway	462-7700
Sears Roebuck & Company	63 S. Lafayette	462-1051
Western Auto	122 E. Lincolnway	462-1430
AUTOMOBILE AND TRUCK RENTAL		
Hertz Rent A Car	902 Calumet	462-3183
AUTOMOBILE AND TRUCK SALES		
Barile Ford Sales, Inc.	1603 E. Lincolnway	462-2102
Hayes Motor Sales	402 E. Lincolnway	462-4491
Landgrebe & Son, Inc.	State Road 130	462-4181
Porter County Co-op	Roosevelt Road	462-2143
BABY SITTING AND CHILD CARE		
Palmer's Hotel For Children	R. R. #2, Smoke Road, Box 37	462-2984
BANKS		
First National Bank	14 Indiana	462-4161
Northern Indiana Bank	101 Lincolnway	462-2151
BANQUET FACILITIES		
Lembke Motor Inn	15 Lafayette	462-1141
Wellman's Holiday Inn	U.S. Hwy 30	462-6141
BEAUTY SALONS		
Harvey's	152 Lincolnway	462-6155
LaFemme Coiffeurs	114 Lincolnway	462-2744
Two Cousins Salon of Beauty	69 Lincolnway	462-2733
BEVERAGES - BEER, WINE, LIQUOR, SOFT DRINKS		
Coca-Cola Bottling Co.	205 Rumely, LaPorte	362-6294
Miller's Department Store and Market	1805 Lincolnway	462-3148
Stone Balloon, The	1409 E. Lincolnway	462-9363
Valpo Liquor Store	1401 E. Lincolnway	462-8819
BICYCLES AND REPAIRS		
Sears Roebuck & Company	63 S. Lafayette	462-1051
Valpo Bike and Lock Shop	20 Franklin	462-6011
Western Auto	122 E. Lincolnway	462-1430
BUILDERS		
Town & Country Homes	102 Morgan	462-6121
BUILDING SUPPLIES		
Porter County Co-op	Roosevelt Road	462-2143
Smith Nupnau Ready Mix	360 Indiana	462-3191
BUTCHER SHOPS		
Bob Greiner & Sons Packing, Inc.	U.S. Hwy 30	462-6501
CAMERAS & PHOTOGRAPHIC SUPPLIES		
Gil Drugs	52 Lincolnway	462-4146
Miller's Department Store and Market	1805 Lincolnway	462-3148
Sievers Drug Company	109 Lincolnway	462-4381
Valparaiso Camera Shop	53 Franklin	462-3445
CARRY-OUT FOODS		
Arman's	1414 E. Lincolnway	462-9304
Cubby, The	1608 Lincolnway	462-4125
Dairy Isle	N. Calumet at McCord Road	
Dairy Queen	2001 LaPorte Road	462-9643
Fishery, The	714 Calumet	462-1078
Hannon's Frostop Drive In	State Road 2	462-5336
CAR WASHES		
North Side Daisy Car Wash	1607 N. Calumet	462-0616



<b>CHILDREN'S &amp; INFANT'S CLOTHING</b>			<b>GARAGE CONSTRUCTION</b>		
Harvey's	152 Lincolnway	462-6155	Indiana Home Improvement	106 Franklin	462-5676
Jo Ann's	115 Lincolnway	462-2773	<b>GARDEN SUPPLIES</b>		
Lowenstine's Department Store	57 Franklin	462-3115	Hannon's Garden Center	Junction State Road 2 and Hwy 30	464-3558
Miller's Department Store and Market	1805 Lincolnway	462-3148	<b>Miller's Department Store and Market</b>		
Penney's Department Store	19 Lincolnway	462-1173	1805 Lincolnway		462-3148
Youngfashions	66 Lincolnway	462-8641	Porter County Co-op	Roosevelt Road	462-2143
<b>COCKTAIL LOUNGES</b>			Sears Roebuck & Company	63 S. Lafayette	464-1051
Lembke Motor Inn	15 Lafayette	462-1141	<b>GASOLINE AND FUEL OIL</b>		
Stone Balloon, The	1409 E. Lincolnway	462-9363	Jack's Standard Service	1501 Calumet	462-9242
Strongbow Turkey Inn	U.S. Hwy 30 East	462-3311	North Side Daisy Car Wash	1607 N. Calumet	462-0616
Wellman's Holiday Inn	U.S. Hwy 30	462-6141	Porter County Co-op	Roosevelt Road	462-2143
<b>CONCRETE</b>			<b>GIFTS</b>		
Smith Nupnau Ready Mix	360 Indiana	462-3191	Binder's Jewelry	23 Lincolnway	462-5931
<b>DALMATIANS</b>			Gil Drugs	52 Lincolnway	462-4146
Debonaire Dalmatians	2306 Clover Lane	462-2704	Harvey's	152 Lincolnway	462-6155
<b>DEPARTMENT STORES</b>			Hook's Drugstore	2004 N. Calumet	464-2141
Harvey's	152 Lincolnway	462-6155	Jo Ann's	115 Lincolnway	462-2773
Lowenstine's Department Store	57 Franklin	462-3115	Jones Jewelry	110 Lincolnway	462-7206
Miller's Department Store and Market	1805 Lincolnway	462-3148	Lowenstine's Department Store	57 Franklin	462-3115
Penney's Department Store	19 Lincolnway	462-1173	Miller's Department Store and Market	1805 Lincolnway	462-3148
Sears Roebuck & Company	63 S. Lafayette	464-1051	Neeley's Men's Shop	70 Lincolnway	462-8031
<b>DOGS - PUPPIES</b>			Nic-A-Brac	114 E. Lincolnway	462-2516
Debonaire Dalmatians	2306 Clover Lane	462-2704	Oxford Shop, The	62 W. Lincolnway	462-8235
<b>DRAPERIES</b>			Pappas Co., The	307 Lincolnway	462-5171
Gearhart's Interiors	151 Lincolnway	464-3219	Sievers Drug Company	109 Lincolnway	462-4381
Harvey's	152 Lincolnway	462-6155	University Drugs	1608 Lincolnway	462-4125
Lowenstine's Department Store	57 Franklin	462-3115	Valparaiso Office Supply, Inc.	74 Lincolnway	462-5184
Miller's Department Store and Market	1805 Lincolnway	462-3148	<b>GLASS AND SCREEN REPAIR</b>		
Penney's Department Store	19 Lincolnway	462-1173	Miller Glass	154 Monroe	462-1753
<b>DRIVE-IN THEATRES</b>			Emergency glass svc. 462-9724		
Premier Theatre & 49'er Drive In	69 Lincolnway	462-3012	<b>GREETING CARDS - STATIONARY</b>		
<b>DRUGS AND PRESCRIPTIONS</b>			Gil Drugs	52 Lincolnway	462-4146
Gil Drugs	52 Lincolnway	462-4146	Harvey's	152 Lincolnway	462-6155
Hook's Drugstore	2004 N. Calumet	464-2141	Hook's Drugstore	2004 E. Calumet	464-2141
Sievers Drug Company	109 Lincolnway	462-4381	Jo Ann's	115 Lincolnway	462-2773
University Drugs	1608 Lincolnway	462-4125	Lowenstine's Department Store	57 Franklin	462-3115
<b>ELECTRICAL CONTRACTORS</b>			Miller's Department Store and Market	1805 Lincolnway	462-3148
Casbon Electric	123 Lincolnway	462-4194	Pappas Co., The	307 Lincolnway	462-5171
<b>ELECTRICAL SUPPLIES</b>			Sievers Drug Company	109 Lincolnway	462-4381
Bowman, Jess, & Assoc.	253 Lincolnway	462-7933	University Drugs	1608 Lincolnway	462-4125
Casbon Electric	123 Lincolnway	462-4194	Valparaiso Office Supply, Inc.	74 Lincolnway	462-5184
Miller's Department Store and Market	1805 Lincolnway	462-3148	<b>HARDWARE</b>		
Sears Roebuck & Company	63 S. Lafayette	464-1051	Harvey's	152 Lincolnway	462-6155
<b>ENTERTAINMENT</b>			Miller's Department Store and Market	1805 Lincolnway	462-3148
Lembke Motor Inn	15 Lafayette	462-1141	Sears Roebuck & Company	63 S. Lafayette	464-1051
Premier Theatre & 49'er Drive In	69 Lincolnway	462-3012	<b>HEARING AID SUPPLIES</b>		
Stone Balloon, The	1409 E. Lincolnway	462-9363	Sievers Drug Company	109 Lincolnway	462-4381
Strongbow Turkey Inn	U.S. Hwy 30 East	462-3311	<b>ICE CREAM AND FROZEN DESSERTS</b>		
Wellman's Holiday Inn	U.S. Hwy 30	462-6141	Arman's	1414 E. Lincolnway	462-9304
<b>EXTERMINATION</b>			Cubby, The	1608 Lincolnway	462-4125
Flash Pest Control	1305 Calumet	462-2983	Dairy Isle	N. Calumet at McCord Road	
<b>FABRICS AND PATTERNS</b>			Dairy Queen	2001 LaPorte Road	462-9643
Harvey's	152 Lincolnway	462-6155	Hannon's Frostop Drive In	State Road 2	462-5336
Lowenstine's Department Store	57 Franklin	462-3115	<b>INSURANCE</b>		
Miller's Department Store and Market	1805 Lincolnway	462-3148	Allanson Insurance, Inc.	4 Indiana	462-5106
Penney's Department Store	19 Lincolnway	462-1173	Bertig Realtor	817 Lincolnway	462-5711
<b>FARM MACHINERY</b>			Claudon & Anderson Ins.	8 Washington	462-5178
Landgrebe & Son, Inc.	State Road 130	462-0551	Drake, Dennis, Ins.	552 W. Lincolnway	462-0527
Porter County Co-op	Roosevelt Road	462-2143	Harley Snyder Co.	407 Lincolnway	464-3531
<b>FEEDS</b>			Sears Roebuck & Company	63 S. Lafayette	464-1051
Porter County Co-op	Roosevelt Road	462-2143	Shurr Insurance & Ewen Realty	833 E. Lincolnway	462-1146
<b>FLOOR COVERING</b>			Smith CLU Insurance	204 E. Lincolnway	462-3630
Gearhart's Interiors	151 Lincolnway	464-3219	Trowbridge Insurance Agency	1607 Calumet	464-1021
Lowenstine's Department Store	57 Franklin	462-3115	<b>INTERIOR DECORATING</b>		
Sears Roebuck & Company	63 S. Lafayette	464-1051	Gearhart's Interiors	151 Lincolnway	464-3219
Tudor Fashion Floors	1603 Roosevelt Road	462-8026	<b>JEWELRY STORES AND REPAIRS</b>		
<b>FLOWERS</b>			Binder's Jewelry	23 Lincolnway	462-5931
Hannon's Garden Center	Junction State Road 2 and Hwy 30	464-3558	Jones Jewelry	110 Lincolnway	462-7206
Pappas Co., The	307 Lincolnway	462-5171	<b>LOANS</b>		
<b>FURNITURE</b>			First National Bank	14 Indiana	462-4161
Miller's Department Store and Market	1805 Lincolnway	462-3148	Northern Indiana Bank	101 Lincolnway	462-2151
			<b>LOCKS AND KEYS</b>		
			Harvey's	152 Lincolnway	462-6155
			Miller's Department Store and Market	1805 Lincolnway	462-3148
			Sears Roebuck & Company	63 S. Lafayette	464-1051
			Valpo Bike and Lock Shop	20 Franklin	462-6041
			Western Auto	122 E. Lincolnway	462-1430

**MEN'S AND BOY'S CLOTHING**

Falvey's Store for Men and Boys 7 Lincolnway 462-8317  
 Harvey's 152 Lincolnway 462-6155  
 Lowenstine's Department Store 57 Franklin 462-3115  
 Miller's Department Store and Market 1805 Lincolnway 462-3148  
 Neeley's Men's Shop 70 Lincolnway 462-8031  
 Oxford Shop, The 62 W. Lincolnway 462-8235  
 Penney's Department Store 19 Lincolnway 462-1173

**MOTELS AND HOTELS**

Lembke Motor Inn 15 Lafayette 462-1141  
 Manor Motel U.S. Hwy 30 462-7401  
 Palmers Hotel for Children R. R. #2, Smoke Road, Box 37 462-2984  
 Wellman's Holiday Inn U.S. Hwy 30 462-6141

**MOTORCYCLES**

B & E Cycle Sales State Road 130 W. 462-7472  
 Buck's Cycle 802 Evans 462-6911

**MOVING AND STORAGE**

Landgrebe Motor Transport, Inc. State Road 130 462-4181

**MUSICAL INSTRUMENTS**

Nelson Piano & Organ Co. 68 Lincolnway 462-5021

**NOTARY PUBLICS**

Chezem, Robert 807 Beech Street 462-4706

**OFFICE SUPPLIES**

Harvey's 152 Lincolnway 462-6155  
 Lowenstine's Department Store 57 Franklin 462-3115  
 Miller's Department Store and Market 1805 Lincolnway 462-3148  
 Valparaiso Office Supply, Inc. 74 Lincolnway 462-5184

**OPTICAL GOODS**

Sievers Drug Company 109 Lincolnway 462-4381

**ORTHOPEDIC SUPPLIES**

Gil Drugs 52 Lincolnway 462-4146  
 Sievers Drug Company 109 Lincolnway 462-4381

**PAINT AND WALLPAPER**

Doelling Paint & Wallpaper, Inc. 753 Spring 462-3043  
 Harvey's 152 Lincolnway 462-6155  
 Miller's Department Store and Market 1805 Lincolnway 462-3148  
 Sears Roebuck & Company 63 S. Lafayette 464-1051  
 Sievers Drug Company 109 Lincolnway 462-4381

**PARTY FAVORS AND SUPPLIES**

Harvey's 152 Lincolnway 462-6155  
 Miller's Department Store and Market 1805 Lincolnway 462-3148  
 Stone Balloon, The 1409 E. Lincolnway 462-9363  
 Valpo Liquor Store 1401 E. Lincolnway 462-8819

**PEST CONTROL**

Flash Pest Control 1305 Calumet 462-2983

**PETS AND PET SUPPLIES**

Debonaire Dalmatians 2306 Clover Lane 462-2704  
 Harvey's 152 Lincolnway 462-6155  
 Sievers Drug Company 109 Lincolnway 462-4381

**PICTURE FRAMES**

Doelling Paint & Wallpaper, Inc. 753 Spring 462-3043  
 Harvey's 152 Lincolnway 462-6155  
 Miller Glass 154 Monroe 462-1753  
 Emergency glass svc. 462-9724

**REALTORS AND REAL ESTATE**

Bertig Realtor 817 Lincolnway 462-5741  
 Fry Real Estate 304 Lincolnway 462-5061  
 Gregory, Gil, Real Estate 819 Lincolnway 462-2692  
 Harley Snyder Co. 407 Lincolnway 464-3531  
 Riggs Real Estate 103 Napoleon 462-3576  
 Shurr Insurance & Ewen Realty 833 E. Lincolnway 462-1146  
 Town & Country Homes 102 Morgan 462-6121  
 Washburn Realtors 451 W. Lincolnway 462-5218  
 Wiggins Realtor 500 E. Lincolnway 462-3195

**RECORDS AND PHONOGRAPHIC SUPPLIES**

Bowman, Jess, & Assoc. 253 Lincolnway 462-7933  
 Harvey's 152 Lincolnway 462-6155  
 Lowenstine's Department Store 57 Franklin 462-3115  
 Miller's Department Store and Market 1805 Lincolnway 462-3148  
 Nelson Piano & Organ Co. 68 Lincolnway 462-5021  
 Record Mart, Inc., The 108 E. Lincolnway 462-7700  
 Sears Roebuck & Company 63 S. Lafayette 464-1051  
 Sievers Drug Company 109 Lincolnway 462-4381

**REMODELING**

Gearhart's Interiors 151 Lincolnway 464-3219  
 Indiana Home Improvement 106 Franklin 462-5676

**RESTAURANTS & COFFEE SHOPS**

Arman's 1414 E. Lincolnway 462-9304  
 Big Wheel 902 Lincolnway 462-4169  
 Cubby, The 1608 Lincolnway 462-4125  
 Fishery, The 714 Calumet 462-1078  
 Hannon's Prostop Drive In State Road 2 462-5336  
 Harvey's 152 Lincolnway 462-6155  
 Lembke Motor Inn 15 Lafayette 462-1141  
 Strongbow Turkey Inn U.S. Hwy 30 East 462-3311  
 Wellman's Holiday Inn U.S. Hwy 30 462-6141

**ROOFING**

Consumers Roofing Co. 4 Weston 462-2808  
 Indiana Home Improvement 106 Franklin 462-5676  
 Sears Roebuck & Company 63 S. Lafayette 464-1051

**RUG CLEANING**

Professional Bldg. Maintenance Company 902 Calumet 462-3177  
 Steamatic of Northern Indiana 706 Cedar Court 464-3568

**SAW SHARPENING AND SUPPLIES**

Morgan Saw Sharpening 102 Bush 462-0167

**SHOES AND FOOTWEAR**

Frames' Paramount Shoes 55 S. Franklin 462-8923  
 Lowenstine's Department Store 57 Franklin 462-3115  
 Miller's Department Store and Market 1805 Lincolnway 462-3148  
 Neeley's Men's Shop 70 Lincolnway 462-8031  
 Penney's Department Store 19 Lincolnway 462-1173

**SIDING**

Indiana Home Improvement 106 Franklin 462-5676  
 Sears Roebuck & Company 63 S. Lafayette 464-1051

**SKIING**

Pines, The 119 Lincolnway 462-2671

**SNOWMOBILES**

Buck's Cycle 802 Evans 462-6911

**STATE FARM INSURANCE**

Drake, Dennis, Ins. 552 W. Lincolnway 462-0527

**TAPE RECORDERS AND SUPPLIES**

Bowman, Jess, & Assoc. 253 Lincolnway 462-7933  
 Casbon Electric 123 Lincolnway 462-4194  
 Miller's Department Store and Market 1805 Lincolnway 462-3148  
 Valparaiso Camera Shop 53 Franklin 462-3445

**TELEVISIONS AND RADIOS AND REPAIRS**

Casbon Electric 123 Lincolnway 462-4194  
 Miller's Department Store and Market 1805 Lincolnway 462-3148  
 Sears Roebuck & Company 63 S. Lafayette 464-1051  
 Werner TV Service 560 Bond 462-2763  
 Western Auto 122 E. Lincolnway 462-1430

**TIRES, BATTERIES AND ACCESSORIES**

Brown Tire Company State Road 49 S 462-3109  
 Jack's Standard Service 1501 Calumet 462-9242  
 Porter County Co-op Roosevelt Road 462-2143  
 Sears Roebuck & Company 63 S. Lafayette 464-1051  
 Western Auto 122 E. Lincolnway 462-1430

**TRANSMISSION SERVICE**

AAMCO Automatic Transmissions 902 Evans 462-1118  
 Barile Ford Sales, Inc. 1603 E. Lincolnway 462-2102

**TRAVEL**

Edgerton's Travel Service 122 E. Lincolnway 462-3672

**VETERINARY SUPPLIES**

Sievers Drug Company 109 Lincolnway 462-4381  
 University Drugs 1608 Lincolnway 462-4125

**WIGS**

Harvey's 152 Lincolnway 462-6155  
 LaFemme Coiffeurs 114 Lincolnway 462-2744  
 Lowenstine's Department Store 57 Franklin 462-3115  
 Miller's Department Store and Market 1805 Lincolnway 462-3148  
 Two Cousins Salon of Beauty 69 Lincolnway 464-2733

**WOMEN'S CLOTHING**

Frames' Paramount Shoes 55 S. Franklin 462-8923  
 Harvey's 152 Lincolnway 462-6155  
 Lowenstine's Department Store 57 Franklin 462-3115  
 Miller's Department Store and Market 1805 Lincolnway 462-3148  
 Penney's Department Store 19 Lincolnway 462-1173  
 Youngfashions 66 Lincolnway 462-8641

*Town & Country*

**HOMES**

**HOME OWNERSHIP**

**Ranging In Price From  
\$17,100 to \$30,500**

*"We Build Homes You Can Grow Into —  
— Not Out Of"*

**462-6121**

**102 MORGAN BLVD.**

**VALPARAISO, IND.**

**"SEEING IS BELIEVING"**

FOR ALL YOUR REAL ESTATE

and

INSURANCE NEEDS



HARLEY  
**SNYDER**  
COMPANY

REALTORS

464-3531 407 Lincolnway, Valparaiso, Ind. 464-3531

## University Drugs

1608 E. Lincolnway

Ph. 462-4125  
462-4126

*Plenty of Easy Front Door Parking*

**Open 7 Days 9 a.m. to 10 p.m.**

LOVELY GIFTS  
LARGE JEWELRY DEPT.  
MONEY ORDER SERVICES  
GREETING CARDS

**Postage Stamps & Handy Mail Box**

**Complete Cosmetic Department**

## The Cubby

*All delicious home-cooked food*

CARRY—OUT SERVICE

Hot dogs	Tacos	Corn beef
Roast beef	Polish sausage	Chile
Chicken	Shrimp dinners	Tostadas
Spaghetti	Perch dinners	Maxi-burger
	Italian beef	
	All beef hamburgers	

**11:00 a.m. to 11:00 p.m.**

**Sunday 11 a.m. to 8 p.m.**

**1608 B E. Lincolnway, Valpo**  
462-0212